

CARLO

CACP04

Carlo Deck Mounted Marble Lavatory Sink 36" x 22 3/4" x 6"
with 36" x 8" x 3/4" Backsplash and Rounded Rectangular
Pedestal 15" x 9" x 27"



SHOWN IN CARLO DECK MOUNTED MARBLE LAVATORY SINK 36" X 22 3/4" X 6" WITH 36" X 8" X 3/4" BACKSPLASH AND
ROUNDED RECTANGULAR PEDESTAL 15" X 9" X 27" | CACP04

TECHNICAL DETAILS

Depth To Overflow: 2.67"
Drain Hole Depth: 1 7/8"
Drain Hole Diameter: 1 3/4"
Drain Style: Center Drain
Fittings Hole Diameter: 1 3/8"
Overflow Opening: Yes

INSPIRATION

Carlo creates a nuanced transitional statement through material and movement. Its recessed deck appears to roll into the basin, creating a ribbon of stone that highlights the material's substantial thickness and weight. Radius corners and a waterfall backsplash complete the sculptural effect.

CODES & STANDARDS

PRODUCT FEATURES

Designed by and exclusive to Waterworks

Sourced and made in Italy

Carved from a solid block of stone. Packaged item weight: 480 lbs

Comes pre-cut for deck-mounted faucet and handles

Features an integrated overflow

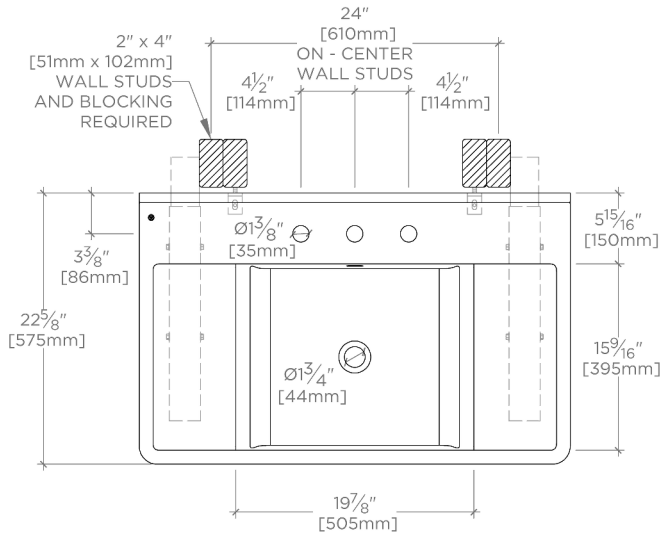
CERTIFICATIONS

PRODUCT (NOTES)

CARLO

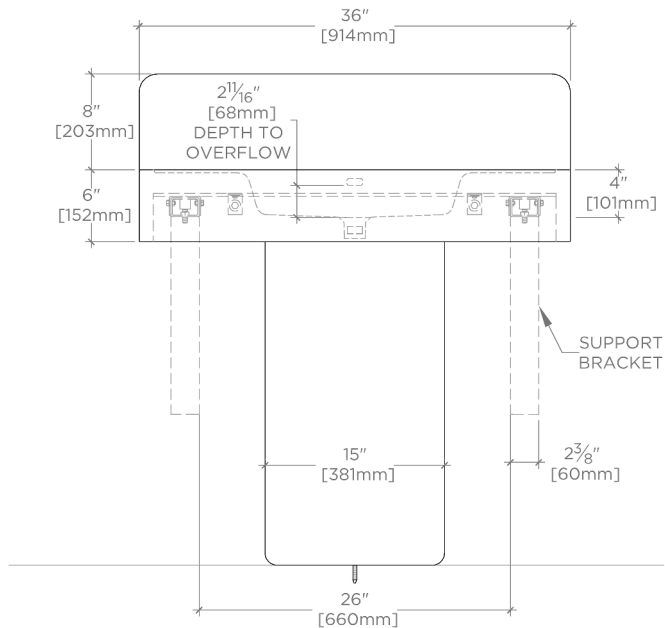
CACP04

Carlo Deck Mounted Marble Lavatory Sink 36" x 22 3/4" x 6"
with 36" x 8" x 3/4" Backsplash and Rounded Rectangular
Pedestal 15" x 9" x 27"



TOP VIEW

SCALE: 3/4"=1'-0"



FRONT VIEW

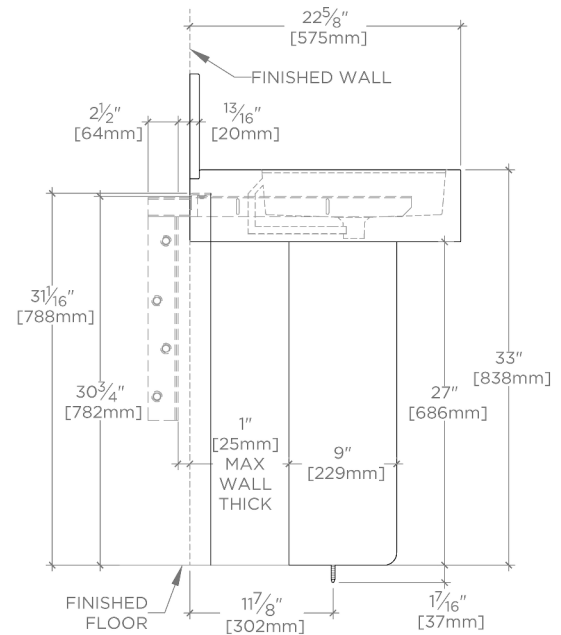
SCALE: 3/4"=1'-0"

REQUIRED MOUNTING HARDWARE (SOLD
SEPARATELY)

STYLE: 106803

DESCRIPTION: UNIVERSAL PAIR (L/R) 22"
STAINLESS STEEL ADJUSTABLE
CONCEALED SUPPORT BRACKETS, WALL
SUPPORT BRACKETS AND HARDWARE FOR
WALL MOUNTED STONE SINK.

NOTE: THE SINK WILL BE SUPPORTED BY
THE BRACKETS AND NOT THE PEDESTAL.
ENSURE THE SINK IS NOT RESTING ON THE
PEDESTAL TO AVOID DAMAGE.



SIDE VIEW

SCALE: 3/4"=1'-0"