



ESTB. 1978

WATERWORKS

Parramore



Parramore mosaics offer options which echo the classical designs of a timeless art form. A fading field of pale shades adds depth, texture and subtle sophistication to the bath. A monogram border framing a grid of field tile instantly adds an air of refinement to a shower wall or floor.



ESTB. 1978

WATERWORKS

Parramore

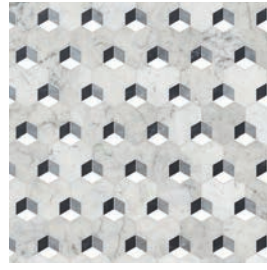
DECORATIVE MOSAIC



ABRASH
PMMOAR



ALASTAIR
PMMOAL



ANDROMEDA
PMMOAM



ANNE
PMMOAA



ATHENA
PMMOAT



BABY BLOCKS
PMMOBB



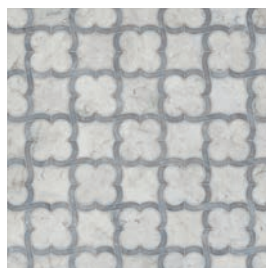
BABY BLOCKS GRANDE
PMMOBG



BENI
PMMOBE



BIRCH
PMMOBI



BLOSSOM
PMMOBO



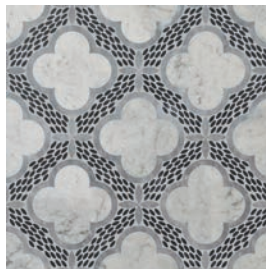
CABOCHON
PMMOCB



CHARLEMAGNE
PMMOCG



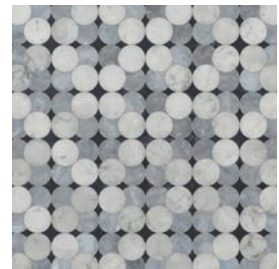
CLARA
PMMOCL



CLIO
PMMOCE



COLORFORMS
PMMOCF



CONSTANCE
PMMOCO

* NOT TO SCALE



ESTB. 1978

WATERWORKS

Parramore

DECORATIVE MOSAIC



DELPHI
PMMODP



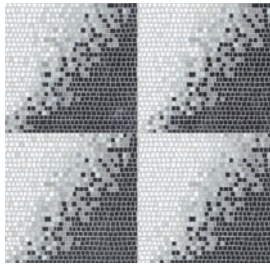
DEMETER
PMMODT



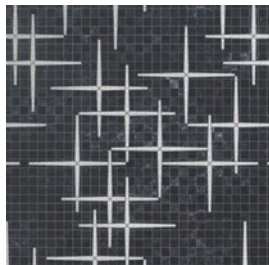
DIMITRI
PMMODM



DRIFT
PMMODR



ECLIPSE
PMMOEC



EERO
PMMOEE



ELSBETH
PMMOEL



EUROPA
PMMOER



FEMI
PMMOFM



FLORA
PMMOFA



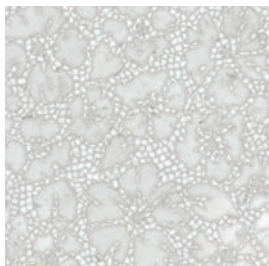
FORTUNA
PMMOFO



GALAHAD
PMMOGA



GEOWAVE
PMMOGE



GENTIAN
PMMOGN



HOLDEN
PMMOHO



IKAT
PMMOIK

* NOT TO SCALE



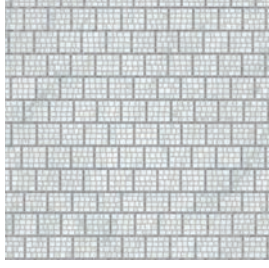
ESTB. 1978

WATERWORKS

Parramore



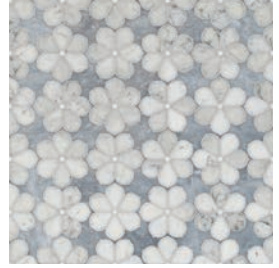
KEY INLAY
PMMOKI



LANDRY
PMMOLA



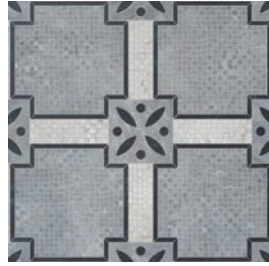
LARA
PMMOLR



LOTUS LATTICE
PMMOLL



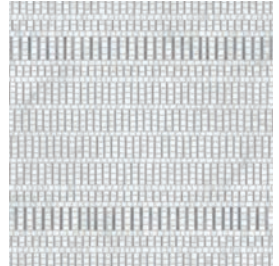
LYRA
PMMOLY



LYSANDER
PMMOLS



MARGUERITE
PMMOMA



MORRIS
PMMOMR



OGEE VINE
PMMOOG



ORIGAMI
PMMOOR



OVAL OVERLAY
PMMOOV



PALLADIN
PMMOPA



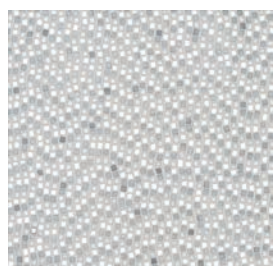
PINWALE
PMMOPW



QUILT BLOCK
PMMOQB



RHOMBIC ALL OVER
PMMORI



RIVER RUN
PMMORV

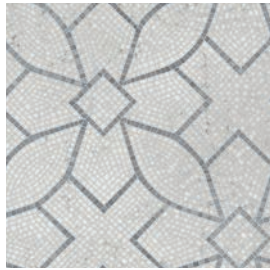
* NOT TO SCALE



ESTB. 1978

WATERWORKS

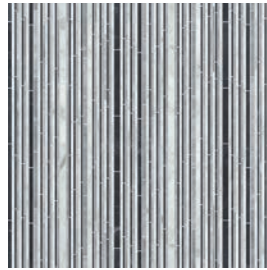
Parramore



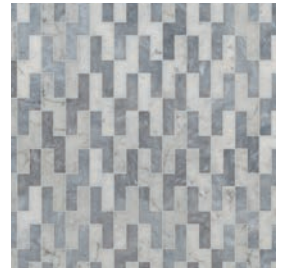
ROLLAND
PMMORO



SCALLOP
PMMOSL



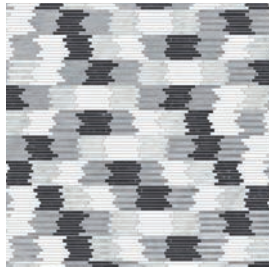
SIMPLY STICKS
PMMOSK



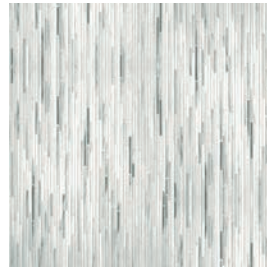
STACK
PMMOSS



SOLID W/ TESSERAE BEATRICE
PMMOB1



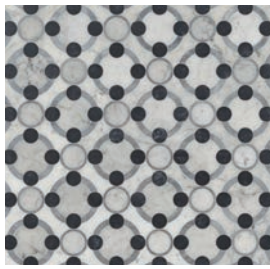
TANNER
PMMOTA



.5cm TATAMI
PMMOT5



.5cm TATAMI BLOCKS DIAGONAL
PMMOT2



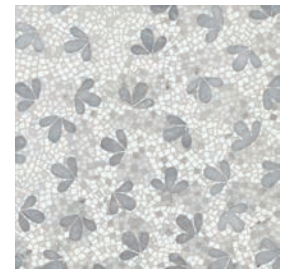
TEMPLE
PMMOTM



TESSERAE BEATRICE
PMMOB2



THEDA
PMMOTH



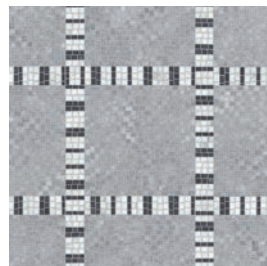
TRI-PETAL
PMMOTP



TWINE
PMMOTI



XANDER
PMMOXA



ZANZIBAR
PMMOZA

* NOT TO SCALE

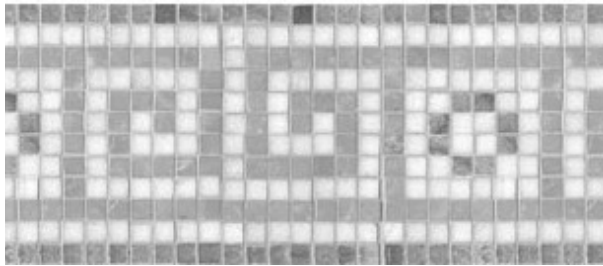


ESTB. 1978

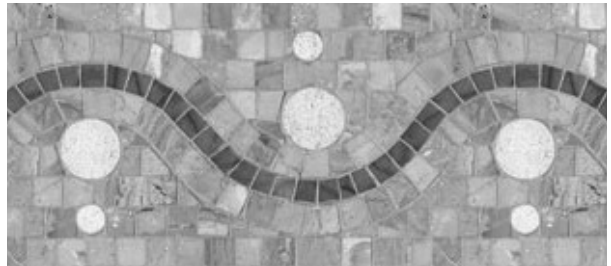
WATERWORKS

Parramore

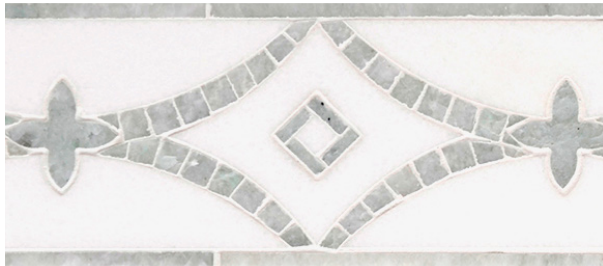
BORDER



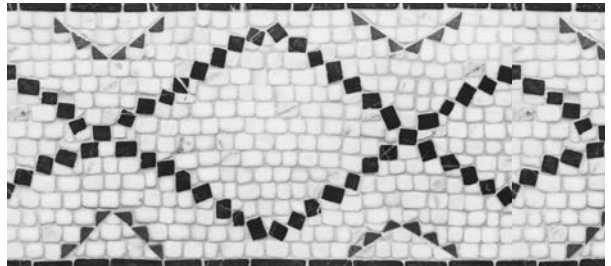
AMAZE KEY
PMBOAM



BABETTE'S BEADS
PMBOBB



BEATRICE
PMBOB2



BENI
PMBOBE



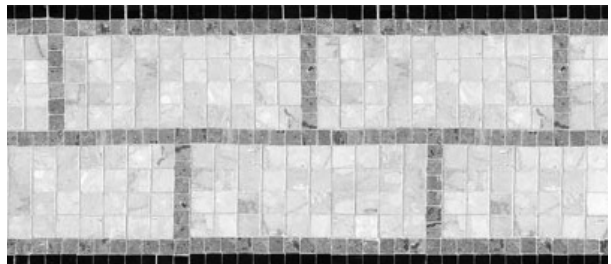
BASKETWEAVE
PMBOBW



COLORFORMS
PMBOCF



CHARLEMAGNE
PMBOCH



COPLEY
PMBOCP

* NOT TO SCALE

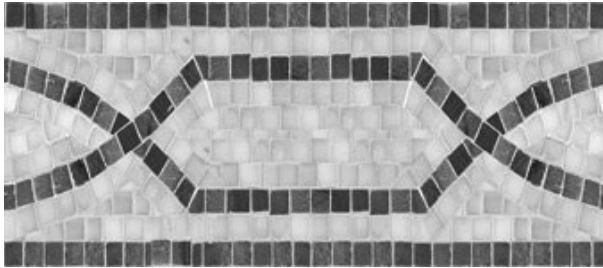


ESTB. 1978

WATERWORKS

Parramore

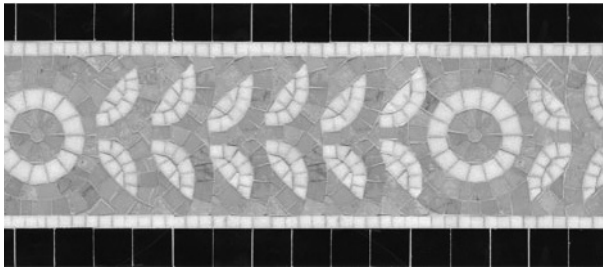
BORDER



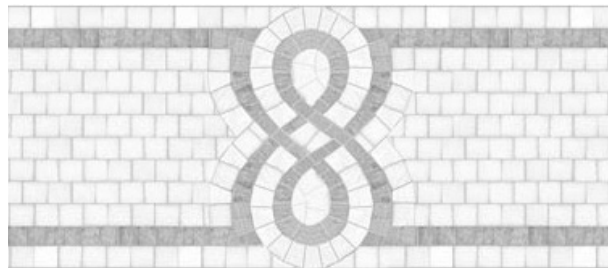
CHINOISERIE
PMBOCS



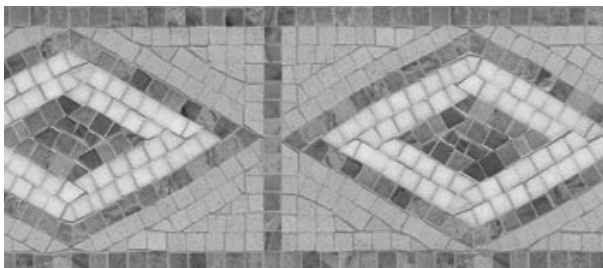
FADING FIELD
PMBOFF



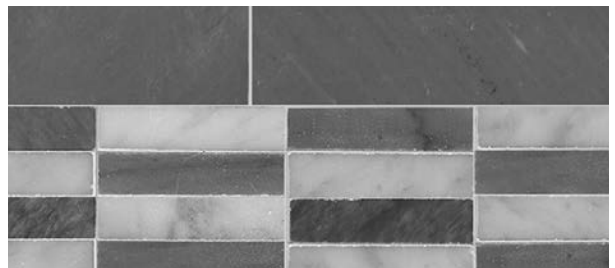
FURLONG
PMBOFU



ISABEAU
PMBOIS



JUPITER
PMBOJP



LATTICE
PMBOLA



LARA
PMBOLR



LILA
PMBOLI

* NOT TO SCALE

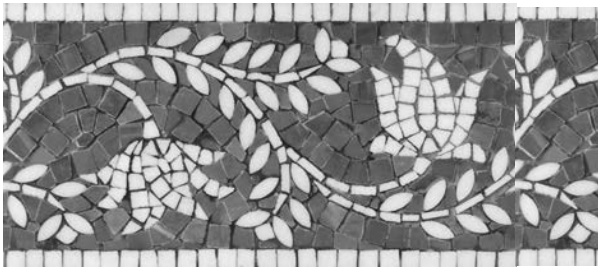


ESTB. 1978

WATERWORKS

Parramore

BORDER



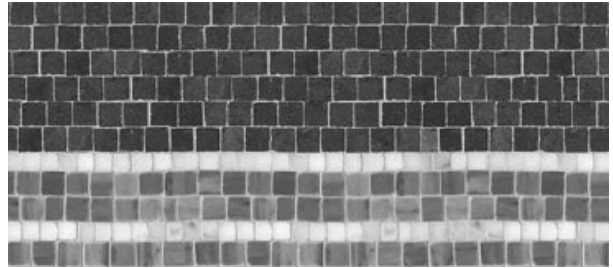
MARGUERITE GRANDE
PMBOMR



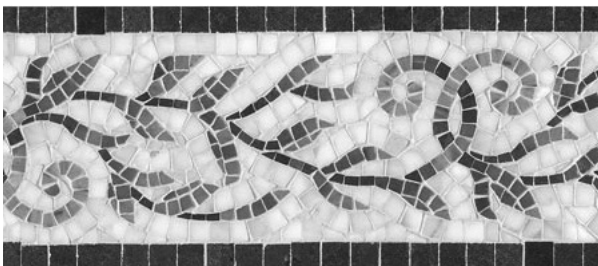
MARGUERITE PETITE
PMBOMA



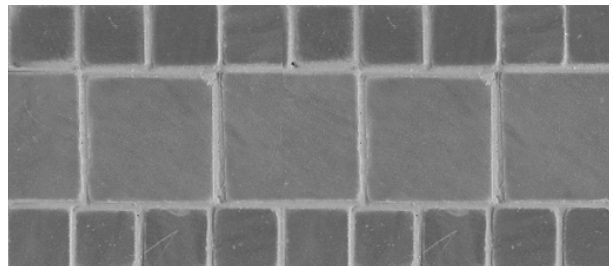
MEADOWSUITE
PMBOMS



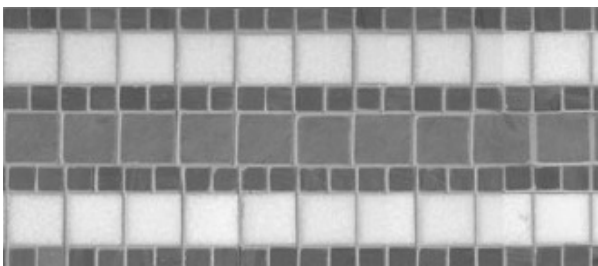
MONOGRAM
PMBOMG



ORGANIC
PMBOOR



MODIFIED PALM BEACH
PMBOMB



PALM BEACH
PMBOPB



PARIS WAVE
PMBOPW

* NOT TO SCALE

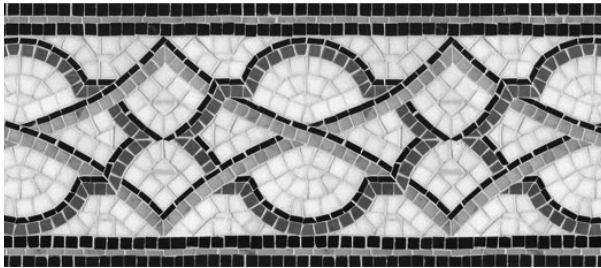


ESTB. 1978

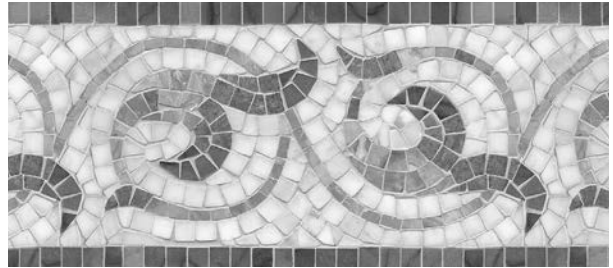
WATERWORKS

Parramore

BORDER



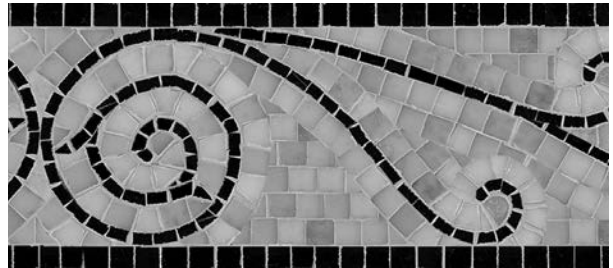
PEGASUS
PMBOPG



SARITA
PMBOSR



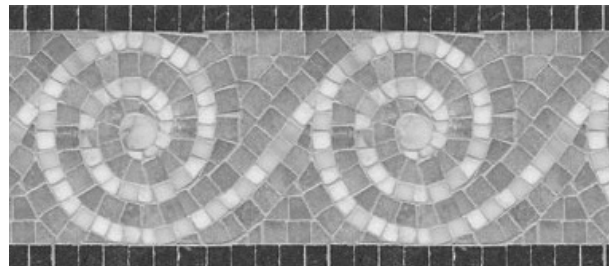
SIMPLY STICKS
PMBOSS



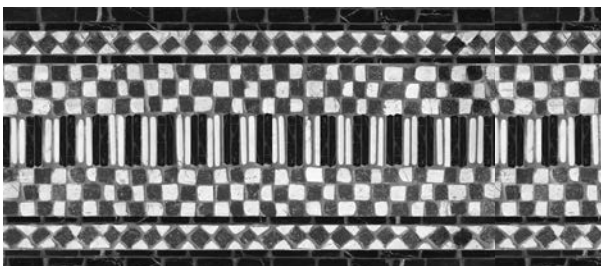
STRING/PARADISO
PMBOSP



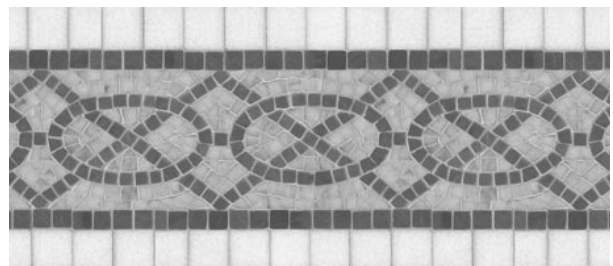
SWAG
PMBOSG



SWIRL
PMBOSW



WEFT
PMBOWE



WYBNE
PMBOWY

* NOT TO SCALE



ESTB. 1978

WATERWORKS

Parramore STONE GROUPS

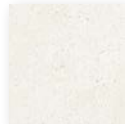
GROUP 1



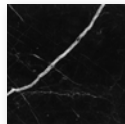
Angora Honed* V4



Carrara V3



Ivory Cream V2



Nero Marquina V3



Saint Laurent V4



Alba Chiara† V4



Allure V3



Arrowroot V3



Bardiglio Medium V3



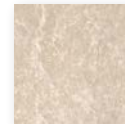
Bardiglio Light V3



Basalto Honed** V2



Bianco Antico Honed** V2



Botticino V2



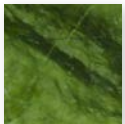
Calacatta Radiance† V3



Cashmere Honed** V5



Cavern Honed** V4



Chartreuse V4



Cloud Nine V4



Desert Sky V3



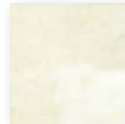
Driftwood V2



Gascogne Blue Honed** V2



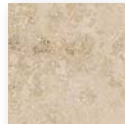
Greystroke V4



Heavenly Cream V2



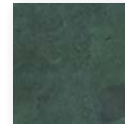
Horizon Honed** V5



Jura Beige Honed** V2



Jura Grey Honed** V2



Jura Green V2 Honed**



Lavender Mist V5



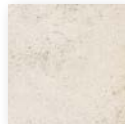
Lettuce Ming V2



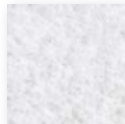
Ming Green V3



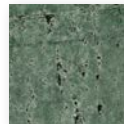
Montevideo VI Honed**



Saint Richard Honed** V1



Snow White† V1



Spring Green V3



Stratus V4



Thassos V1



Verde Alpi*** V3

GROUP 2

**Honed Finish Only

***Not suitable for wet applications

† Stone cannot be used in Handclipped Patterns



ESTB. 1978

WATERWORKS

Parramore STONE GROUPS

GROUP 3



Afyon White V3



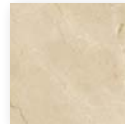
Breccia Oniciata V3



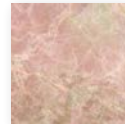
Calacatta Gold V4



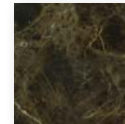
Calacatta Tia V5



Crema Marfil V2



Desert Pink V2



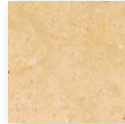
Emperador V4 Dark



Emperador V3 Light



Giallo Reale V3



Jerusalem Gold Honed** V2



Kay's Green V4



Kehena V2



Lagos Gold Honed** V2



Orpheus Black Honed** + V1



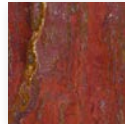
Palomar Honed** V3



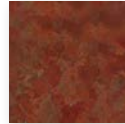
Paperwhite*V2



Red Lake V3



Red Travertine V4



Rojo Alicante V3



Statuarietto V4



Thassos Select V1



Travertine V2 Noce



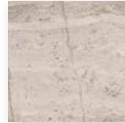
Travertine V3 White



Verde Luna V3



White Dolomite V3



Whitewood V2

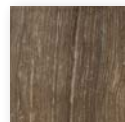
GROUP 4



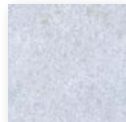
Aegean Brown V3



Argent Blue V3



Baynard V1



Celeste V3



Chinese Purple V4



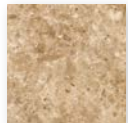
Cielo V4



Crema Valencia V4



Imperial Danby V3



Lavigne Honed** V2



Plumeria V4

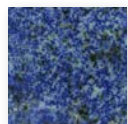


Rosa Portogallo V4

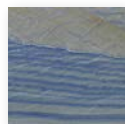


Statuario V4

PREMIUM



Blue Bahia V2



Blue Macauba Regular V4



Blue Macauba Select V4



Honey Onyx* V5



White Onyx V5

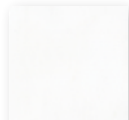


ESTB. 1978

WATERWORKS

Parramore

PREMIUM - SPECIALTY
GLASS



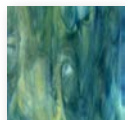
Absolute White V1



Agate V4



Alabaster V4



Alexandrite V4



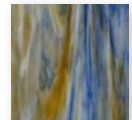
Amazonite V4



Amber V4



Aquamarine V4



Blue Onyx V4



Blue Spinel V4



Cat's Eye V4



Calcedony V4



Champagne V4



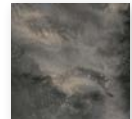
Chrysoberyl V4



Chrysocolla V4



Dawn Mirror V3



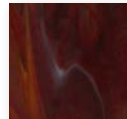
Dusk Mirror V3



Emerald V4



Feldspar V4



Garnet V4



Iolite V4



Jade V4



Jasper V4



Labradorite V4



Lapis Lazuli V4



Lavastone V4



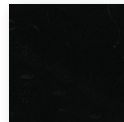
Marcasite V4



Mica V4



Moonstone V4



Obsidian V4



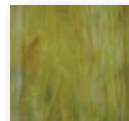
Opal V1



Peacock Topaz V4



Pearl V4



Peridot V4



Pewter V4



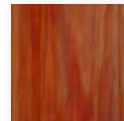
Quartz V4



Rose Quartz V4



Ruby V4



Sardonyx V4



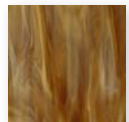
Schist V4



Serpentine V4



Tanzanite V4



Tigers Eye V4



Tortoise Shell V4



Turquoise V4



Zircon V4

METAL



Aluminum V4



Brass V4



Gold V4



Platinum V4



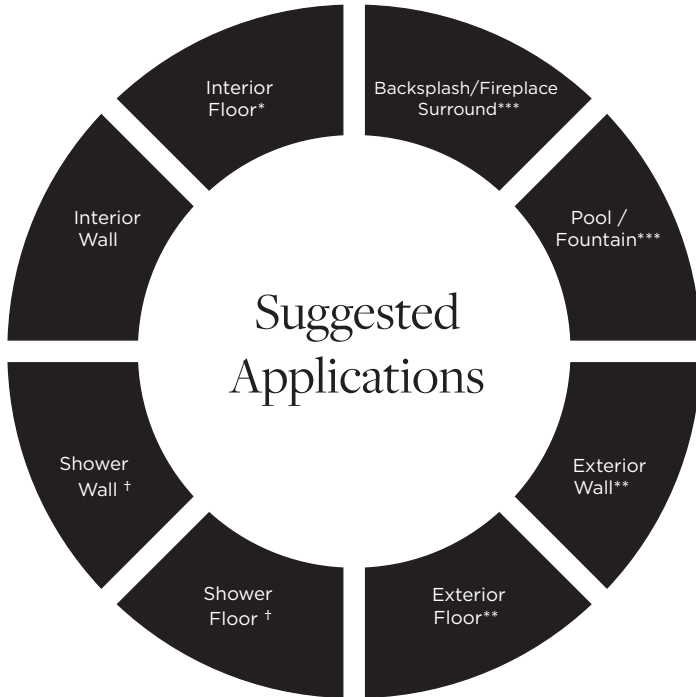
Shell V4



ESTB. 1978

WATERWORKS

Parramore



● Recommended Use ○ Not Recommended Use

Application Notes

* Traffic level varies based on materials. Stone is suitable for high traffic. Metal can ONLY be used in small format and will scratch and patina over time.

** Suitable for tropical/subtropical climates ONLY (if properly installed, sealed, and maintained). Metal CANNOT be used for exterior or pools/fountains.

† Suitable for use in wet environment if properly installed, sealed, and maintained. Various stones NOT suitable for wet environments. Please inquire. Metal NOT suitable for submerged application. Mirror glass CANNOT be used in wet application.

*** Tessarae no larger than 2"

Installation / Maintenance

- WATERWORKS ASSUMES NO RESPONSIBILITY FOR INSTALLATION
- Installation constitutes acceptance.
- Mosaic should be installed by a licensed and experienced tile setter.
- Refer to TCNA (Tile Council of North America) or ANSI standards for installation guidelines.
- All mosaics must be inspected PRIOR to installation.
- Dry lay mosaics prior to installation to allow for blending of color variation.
- Waterworks recommends a grouted test panel prior to installation to understand final appearance of grouted materials
- Stone must be sealed before grout installation to allow grout to release and prevent staining.
- Stone and grout should be sealed after installation and maintained regularly.

Variation Level

V1	V2	V3	V4	V5

1. MINIMAL, IF ANY COLOR VARIATION
2. SLIGHT COLOR VARIATION CAN BE EXPECTED
3. A MEDIUM RANGE OF COLOR VARIATION IS TYPICAL; DARKER AND LIGHTER TONES ARE EVIDENT
4. CONSIDERABLE COLOR VARIATION IS TYPICAL; FROM DARKS TO LIGHTS AND SOME TONE CHANGES
5. EXTREME COLOR VARIATION CAN BE EXPECTED - THE RANGE IS OFTEN DIFFERING BUT COMPLEMENTARY

PLEASE REFER TO COLLECTION TEARSHEET FOR VARIATION LEVEL BY COLOR.

SAMPLING IS RECOMMENDED TO UNDERSTAND VARIATION OF MATERIAL

Product Variation

Color and surface variation is an inherent characteristic of natural materials and should be expected. Thickness and grout width will also vary and should be expected. Refer to our color variation ranking for further details. Please inquire for additional information.

Custom Opportunities Available

Minimums and extended lead-times may apply.

Please contact your local Waterworks showroom or our direct sales team at 800.899.6757.

Thickness

$\frac{3}{8}$ "*

*Nominal: +/- 1/6"

Suggested Grout Lines

Varies- Please follow mosaic sheet