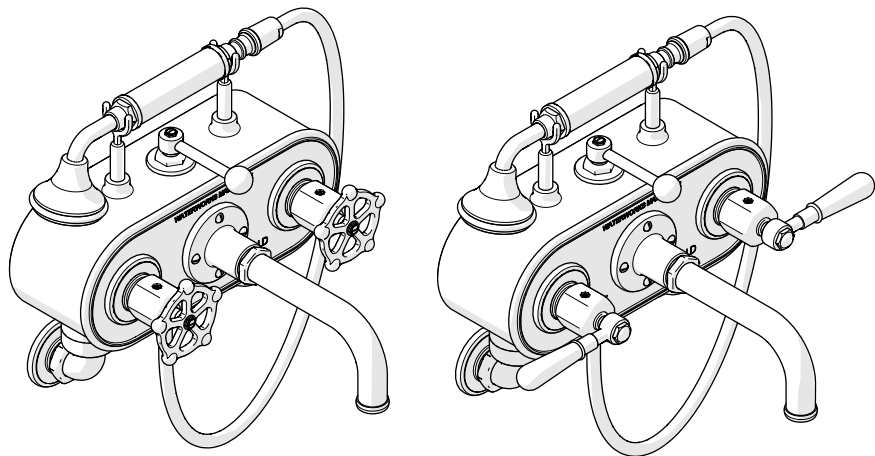


INSTALLATION GUIDELINES

WALL MOUNTED EXPOSED TUB FILLER

REGULATOR WALL MOUNTED EXPOSED TUB FILLER WITH HANDSHOWER AND HANDLES



| STYLES | | | |
|--------|----------------|--------|----------------|
| RGXT40 | RGXT41 [SHOWN] | RGXT50 | RGXT51 [SHOWN] |

IMPORTANT:

- To ensure this product is installed properly, you must read and follow these guidelines.
- The owner/user of this product must keep this information for future reference.
- This product must be installed by a professional licensed contractor and must be on-site prior to rough-in. This allows the installer to visualize the installation and verify the 8" [203mm] on-center inlet supply spread. The inlet supply spread on this product is **NOT** adjustable.
- Check the TUB measurements to assure the SPOUT projects far enough into the TUB.
- 2" x 6" wood blocking for mounting the VALVE BODY to wall is required.
- Run 3/4" supply lines for MAXIMUM flow and install ACCESSIBLE hot and cold service stop valves to facilitate servicing.

- Be sure your installation conforms to all federal, state, and local codes.
 - Anti-scald protection is the responsibility of the installer and according to applicable codes.
 - A water temperature limiting device is the responsibility of the installer and must be in accordance with ASSE1070.
 - In the State of Massachusetts, all installations must comply with the rules and regulations set forth within 248 CMR.
- Inspect this product to ensure it is the correct model and you have all the parts required for proper installation.
- Product is sold partially assembled but shown fully disassembled for illustrative and service purposes only.
- Use only a strap wrench or protected/smooth-jaw wrench on any finished surface.
- The use of certain plumber's putty may stain stone or tile surfaces.
- If further assistance is required, please contact Product Support at 1-800-927-2120 Monday through Friday, 8am - 6pm EST.
- Refer to the separate Service Parts Documents for available replacement parts.

TECHNICAL DETAILS:

| DETAIL | SPECIFICATION |
|----------------------------|--|
| DIAMETER OF HEAD | Ø2-3/4" [70mm] |
| SPOUT REACH | 11-9/16" [294mm] |
| HANDLE TURN ANGLE | QUARTER TURN |
| HANDSHOWER HOSE LENGTH | 60" [1.52m] |
| INLET CONNECTION | 3/4" COMPRESSION CONNECTION |
| INLET SUPPLY SPREAD | 8" [203mm] (NOT ADJUSTABLE) |
| INTEGRATED DIVERTER | YES |
| WATER PRESSURE RANGE | 20psi [1.5 bar] MIN 85psi [6.0 bar] MAX |
| WATER PRESSURE RECOMMENDED | 45psi [3.0 bar] |

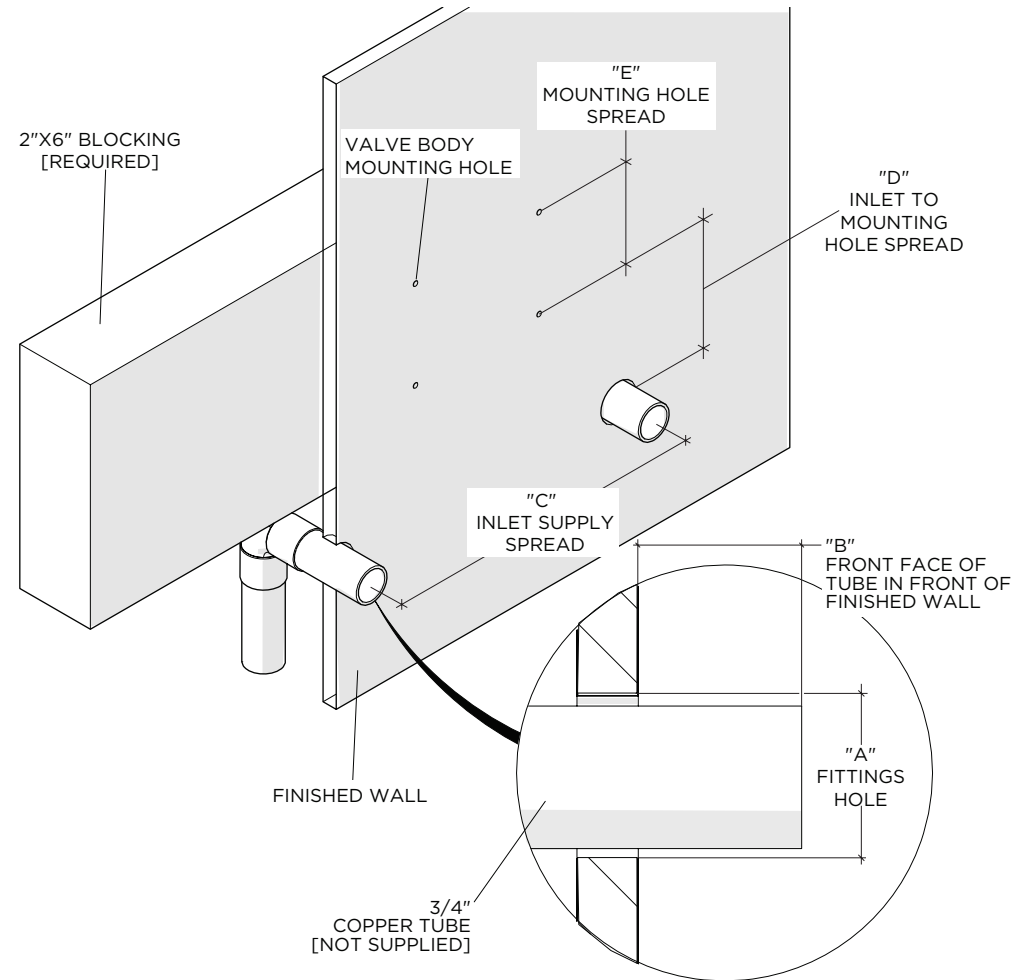
INSTALLATION GUIDELINES

WALL MOUNTED EXPOSED TUB FILLER

ROUGH-IN:

- 2" x 6" wood blocking for mounting the VALVE BODY to wall is required.
- **CAUTION:** The inlet supply spread of this product is **NOT ADJUSTABLE!** If the rough-in is **NOT** accurate it will make the installation difficult or impossible.
- Run well supported 3/4" hot and cold copper supply lines for **MAXIMUM** water flow.
- Ensure the supply lines are:
 - Securely anchored/strapped,
 - Level,
 - Perpendicular to finished wall,
 - Parallel to each other,
 - At the proper spread of 8" [203mm] and,
 - At the appropriate and equal depths.
- Cap off the supply lines and check for leaks.
- **CAUTION:** Make sure when supply lines are cut, the cuts are straight and the edges are free of any burrs.
- **IMPORTANT:** The supply lines **MUST** project a **MINIMUM** of 1" [25mm] and **MAXIMUM** of 1-1/4" [32mm] from the surface of the finished wall.

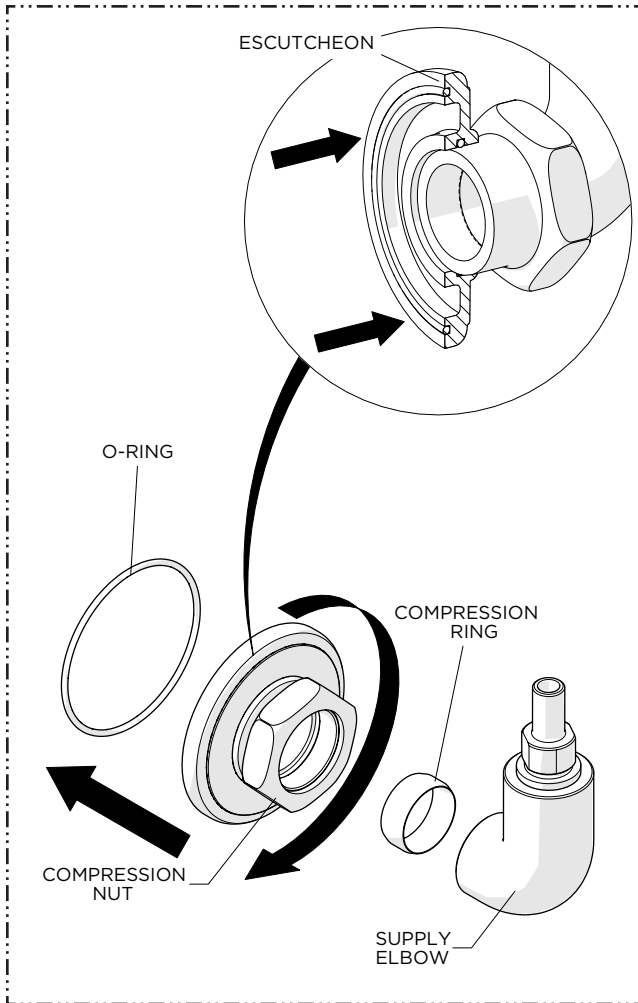
| DIMENSION | VALUE |
|-----------|---|
| A | 1-1/8" [29mm] |
| B | 1" [25mm] MINIMUM 1-1/4"[32mm] MAXIMUM |
| C | 8" [203mm] (NOT ADJUSTABLE) |
| D | 3-1/4" [83mm] |
| E | 2-1/2" [64mm] |



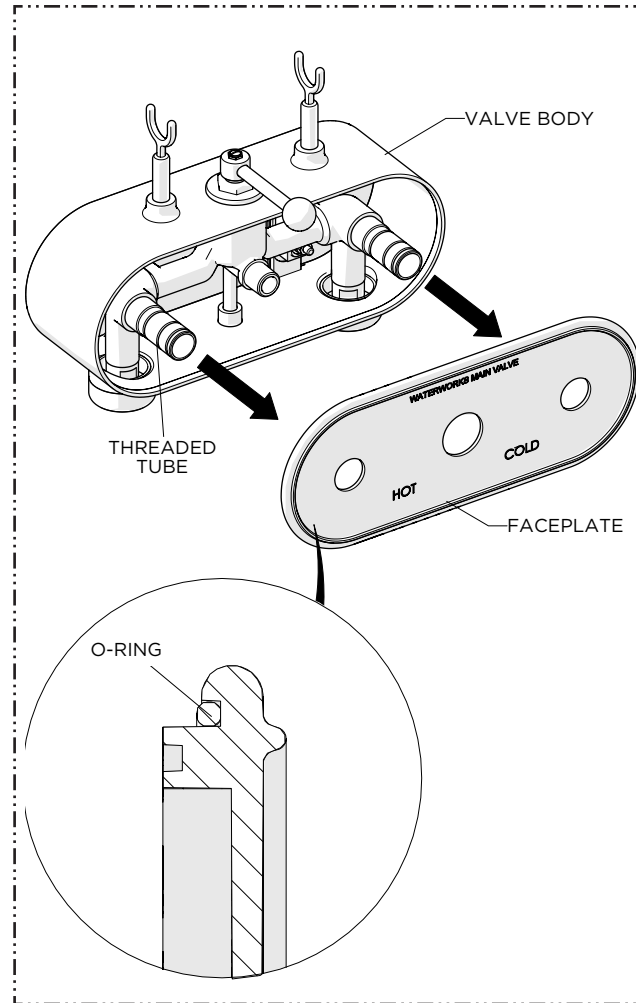
INSTALLATION GUIDELINES

WALL MOUNTED EXPOSED TUB FILLER

WATERWORKS

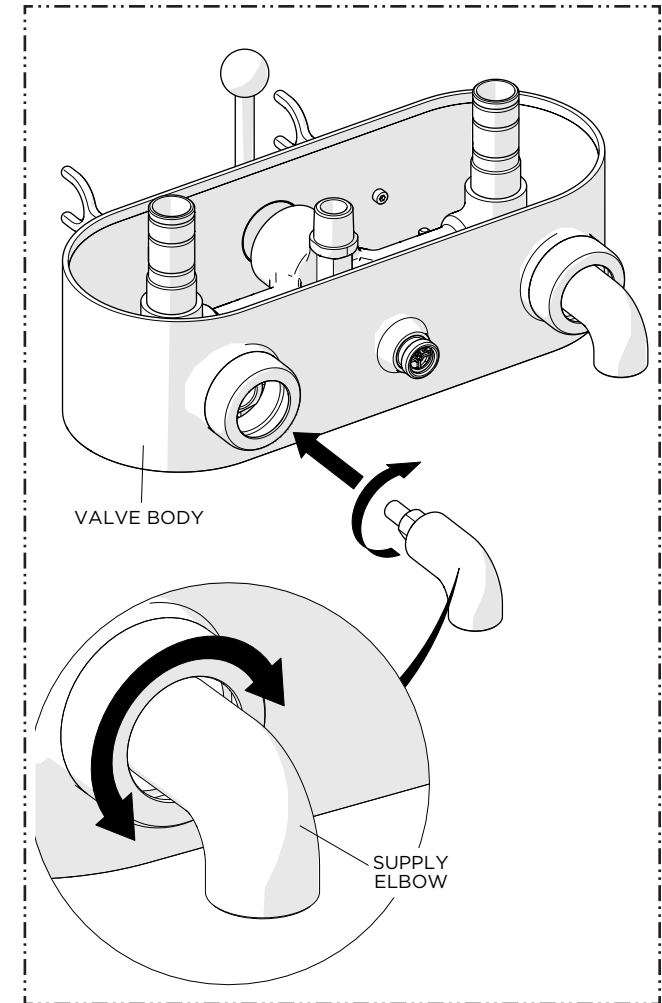


1. Slide the ESCUTCHEONS up the COMPRESSION NUTS then unthread and remove the NUTS and COMPRESSION RINGS from the SUPPLY ELBOWS.



2. Remove the FACEPLATE from the VALVE BODY to access the mounting holes.

NOTE: O-RINGS on the THREADED TUBES used to hold the FACEPLATE can be removed and discarded.



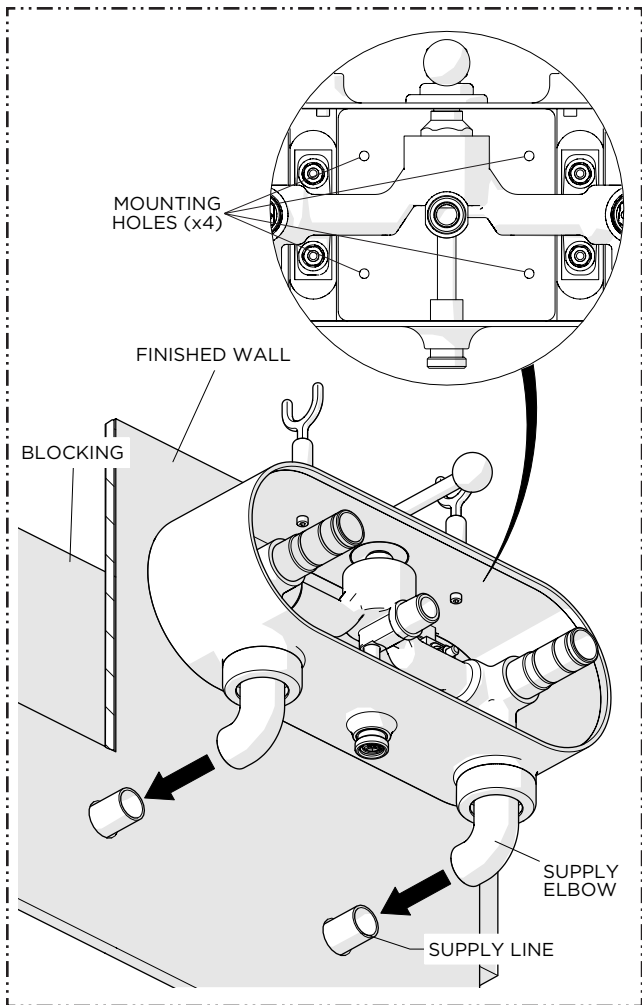
3. Thread the SUPPLY ELBOWS into the VALVE BODY until snug. Ensure the ELBOWS are aligned properly.

If necessary, adjust the alignment by unthreading the ELBOWS from the VALVE BODY.

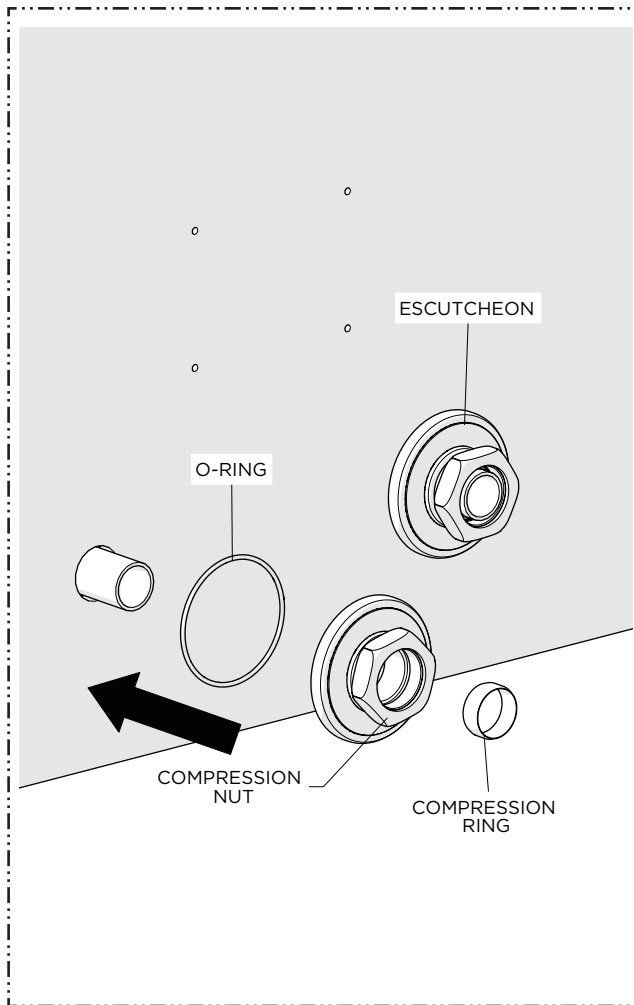
CAUTION: Do **NOT** unthread the ELBOWS more than 2 rotations or one ELBOW more than the other.

INSTALLATION GUIDELINES

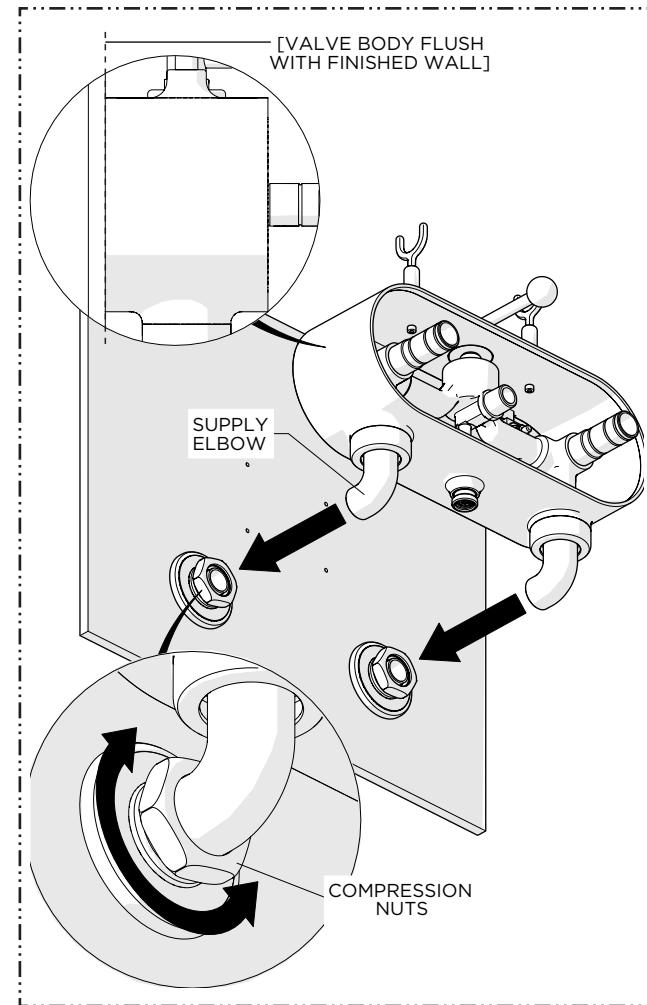
WALL MOUNTED EXPOSED TUB FILLER



4. Dry-fit the ELBOWS onto the supply lines making sure the VALVE BODY sits flush against the finished wall then mark the location of the MOUNTING HOLES (x4).
Remove the VALVE BODY and pre-drill holes (pilot holes) to accommodate the MOUNTING SCREWS provided.



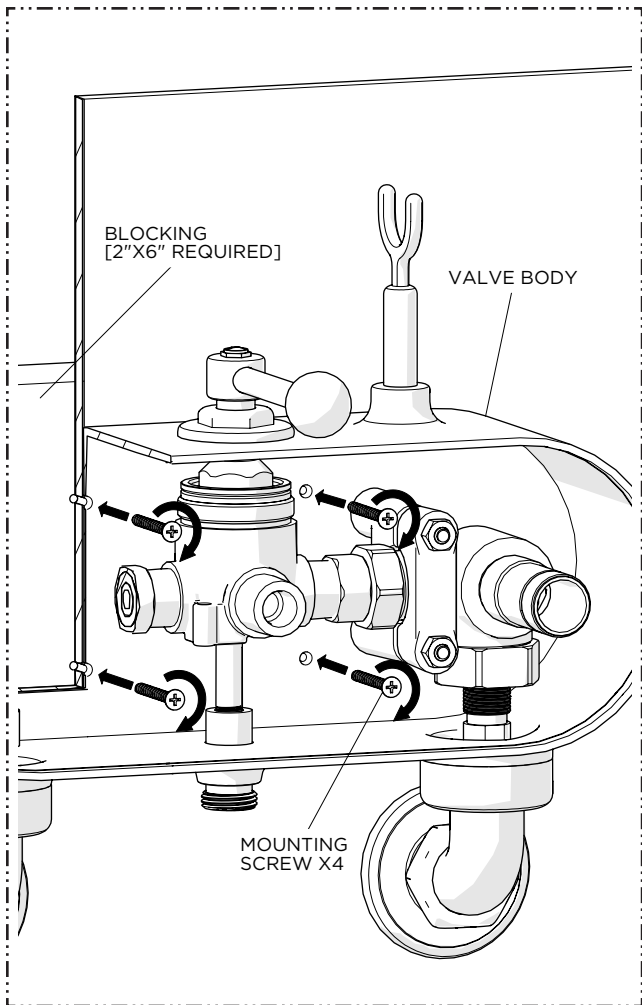
5. Slide the O-RINGS, COMPRESSION NUTS with the ESCUTCHEONS, and COMPRESSION RINGS onto the supplies.



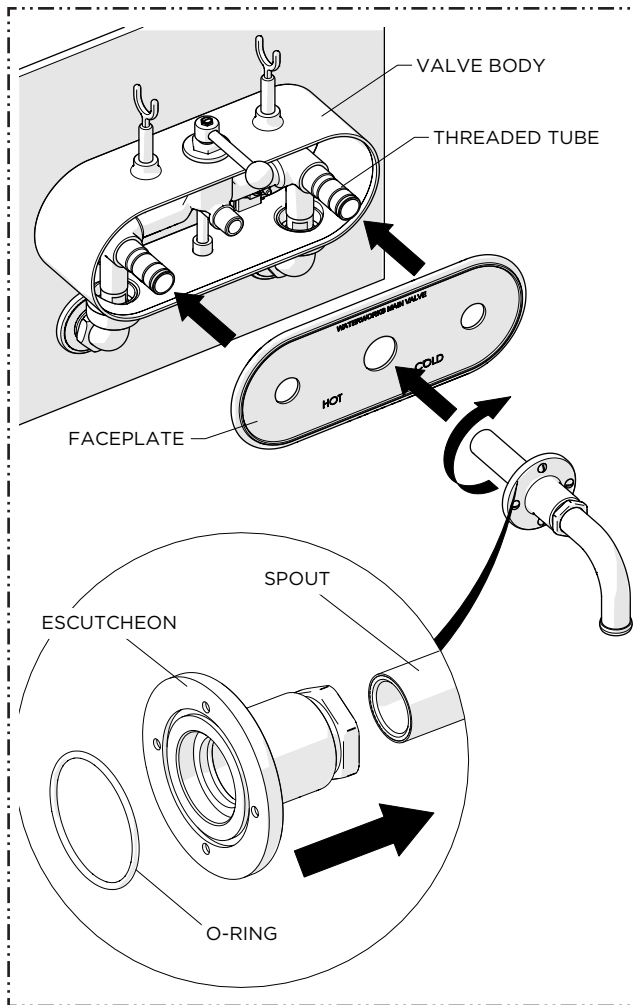
6. Slide the ELBOWS over the supplies then thread and securely tighten the COMPRESSION NUTS onto the ELBOWS making sure the VALVE BODY sits flush with the finished wall.

INSTALLATION GUIDELINES

WALL MOUNTED EXPOSED TUB FILLER

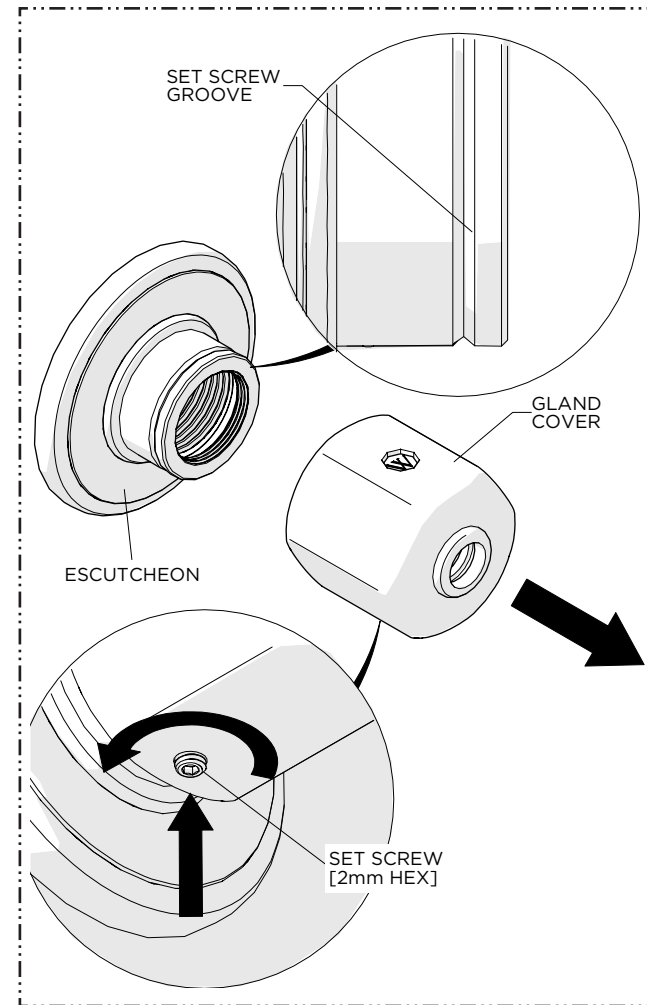


7. Secure the VALVE BODY to the wall using the MOUNTING SCREWS provided.



8. Slide the FACEPLATE back over the THREADED TUBES making sure it is fully seated.

Slide the ESCUTCHEON onto the SPOUT making sure to include the O-RING provided, then thread and securely tighten the SPOUT into the VALVE BODY.

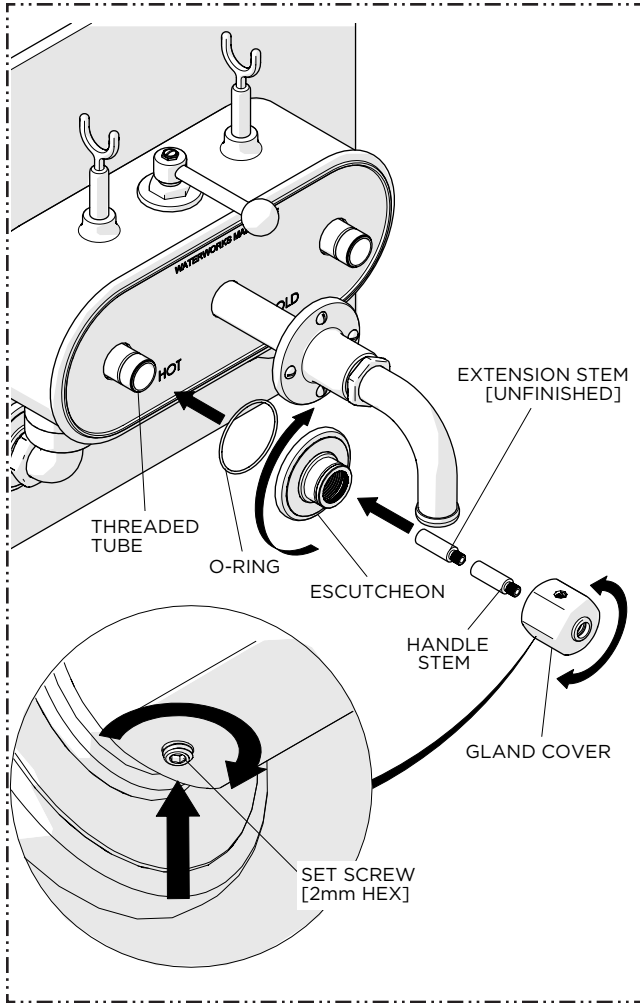


9. Loosen, but do **NOT** remove the SET SCREW using a 2mm HEX KEY, then remove the GLAND COVER.

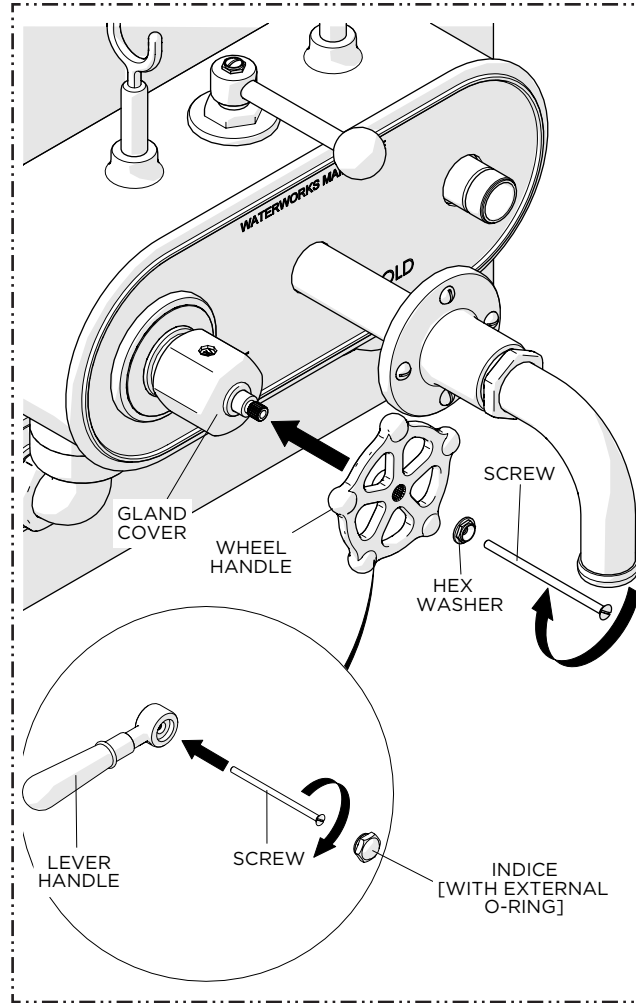
IMPORTANT: The GLAND COVER may be rotated to ensure it is in the desired orientation. Do **NOT** use the GLAND COVER as leverage to install the ESCUTCHEON.

INSTALLATION GUIDELINES

WALL MOUNTED EXPOSED TUB FILLER

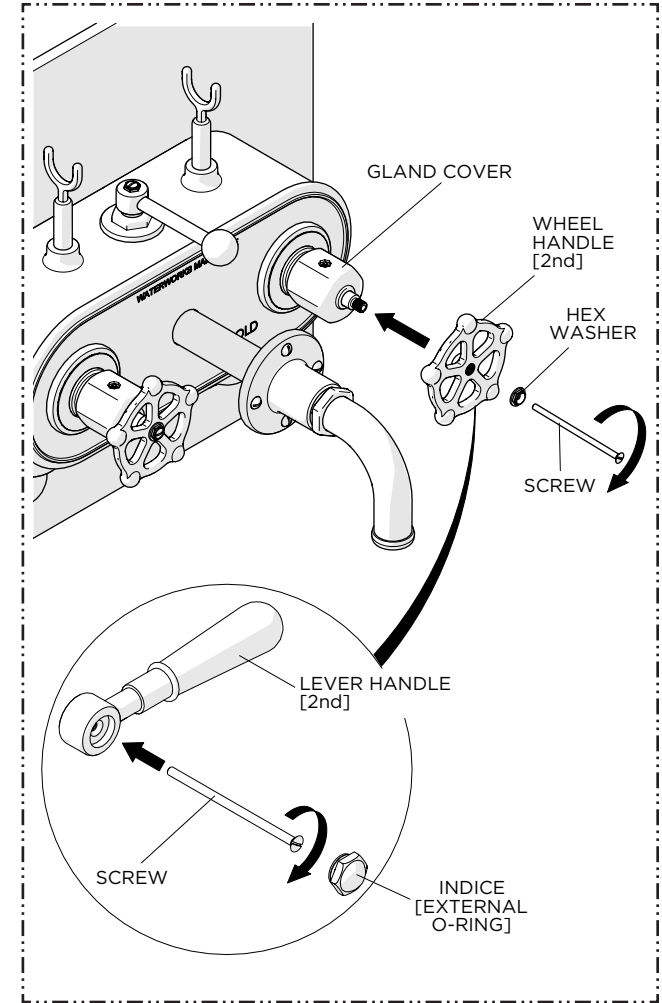


10. Thread and securely tighten the ESCUTCHEON onto the THREADED TUBE using the O-RING provided. Place the HANDLE STEMS into the CARTRIDGE then push the GLAND COVER onto the ESCUTCHEON until it is **FULLY** seated. Rotate it to the desired orientation and securely tighten the SET SCREW.



11. Place the HANDLE onto the STEM in the desired orientation then thread and secure with the SCREW provided.

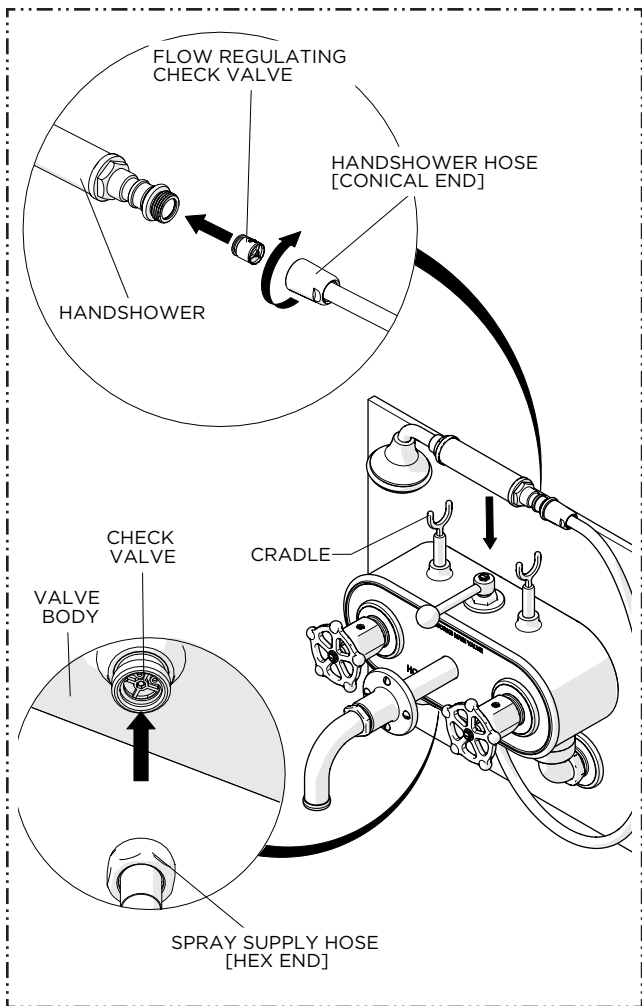
NOTE: WHEEL HANDLES have a finished WASHER and LEVER HANDLES have an INDICE to conceal the SCREW.



12. Repeat STEPS 9 - 11 to install the second [2nd] WHEEL or LEVER HANDLE.

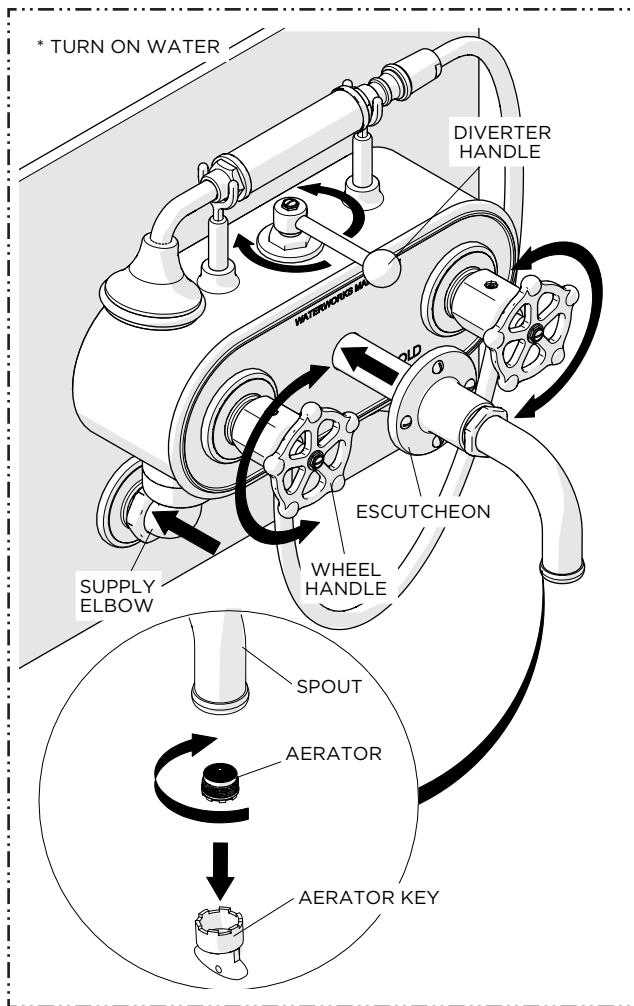
INSTALLATION GUIDELINES

WALL MOUNTED EXPOSED TUB FILLER



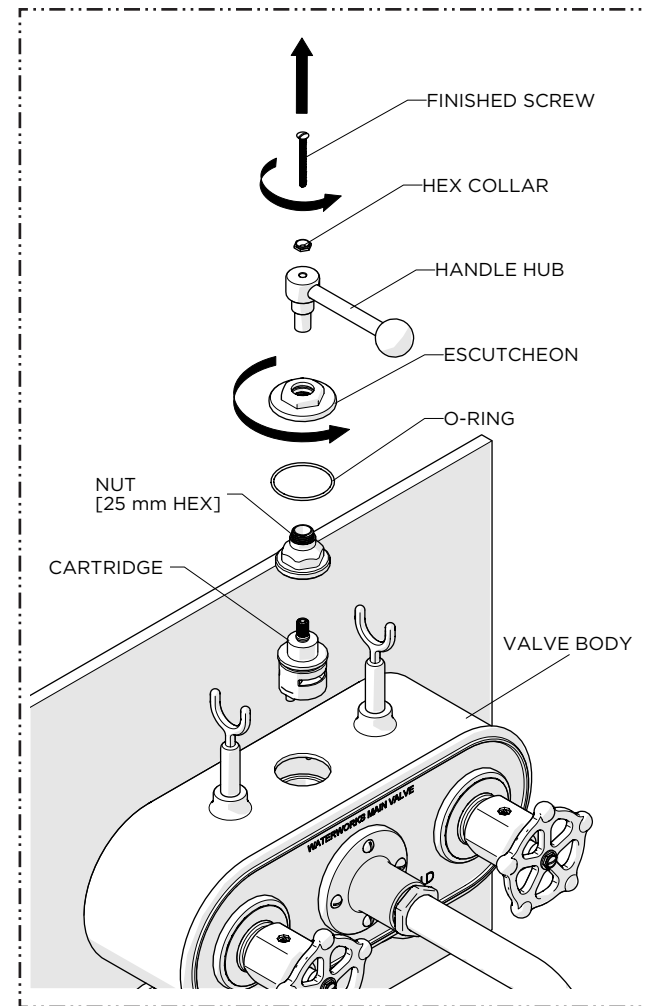
13. Thread and securely tighten the CONICAL END of the HOSE to the HANDSHOWER and HEX END of the HOSE onto the VALVE BODY, then place the HANDSHOWER cover the CRADLE on the VALVE BODY.

NOTE: Make sure a FLOW REGULATING CHECK VALVE is located inside the inlet of the HANDSHOWER.



14. Remove the AERATOR from the SPOUT using the AERATOR KEY provided, then turn on the water and operate the HANDLES and DIVERTER HANDLE to flush out any debris in the supply line to ensure they function properly.

Inspect all connections for leaks, then slide the ESCUTCHEONS down the SPOUT and SUPPLY ELBOWS. Turn off the water and re-install the AERATOR.



SERVICING THE CARTRIDGE:

1. Unread and remove the FINISHED SCREW, HEX COLLAR, HANDLE HUB, ESCUTCHEON NUT [25mm HEX] from the VALVE BODY, then Remove the CARTRIDGE.