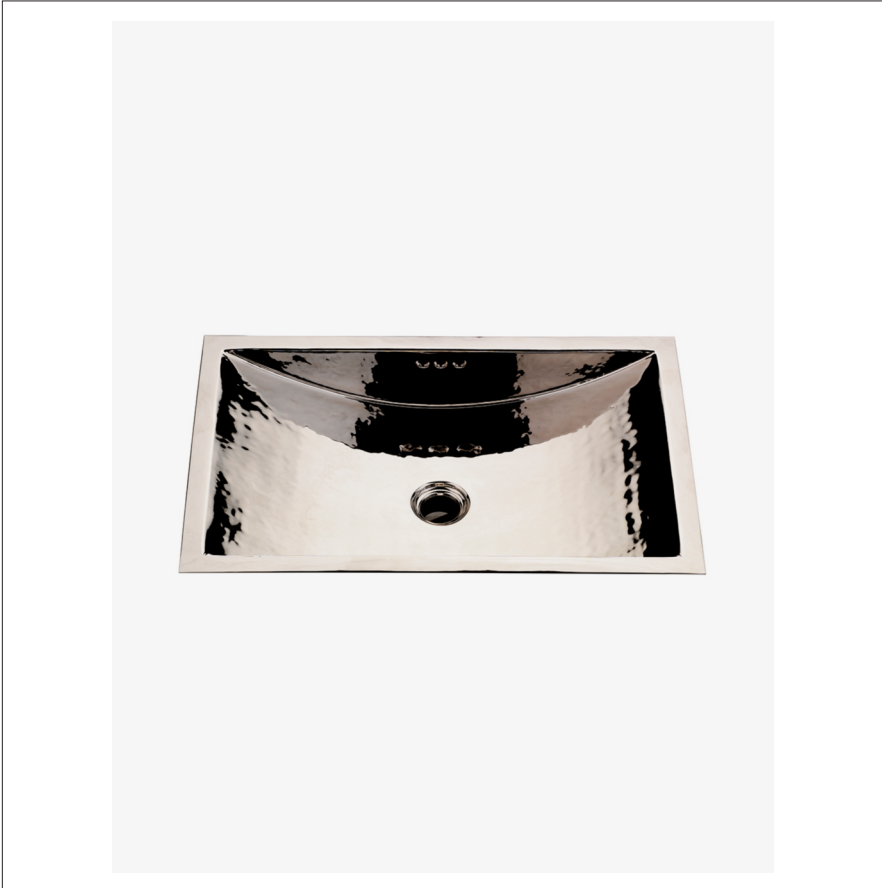


NORMANDY

NOLV57

Normandy Drop In or Undermount Rectangular Hammered Copper Lavatory Sink 15 3/8" x 11 7/16" x 5 1/8"



SHOWN IN NORMANDY DROP IN OR UNDERMOUNT RECTANGULAR HAMMERED COPPER LAVATORY SINK 22 13/16" X 14

TECHNICAL DETAILS

ADA Compliance: When installed per ADA guidelines
Bowl Shape: Rectangular
Depth / Width: 11 7/16"
Height: 5 1/8"
Installation Type: Drop In or Undermount
Length: 15 3/8"
Number of Holes: Two Hole
Outer Rim Shape: Rectangular
Primary Material: Hammered Copper
Suggested Application: Bath

INSPIRATION

Like the antique French copper cookware that inspired them, our Normandy sinks lend a special warmth and richness to any environment. Each pure red copper design is hammered and polished by hand according to the old French tradition.

PRODUCT FEATURES

Handcrafted in France from sheets of copper and formed in individual molds.
The Normandy sinks are finished with a burnishing hammer and polished by hand.

CODES & STANDARDS

Code # NOLV57:



PRODUCT (NOTES)

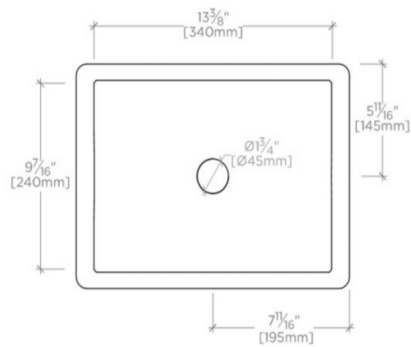
Dimensions of sinks are nominal and are subject to slight variations.

WATERWORKS

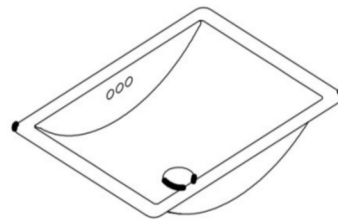
NORMANDY

NOLV57

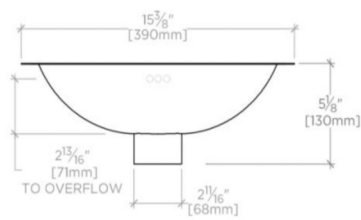
Normandy Drop In or Undermount Rectangular Hammered Copper Lavatory Sink 15 3/8" x 11 7/16" x 5 1/8"



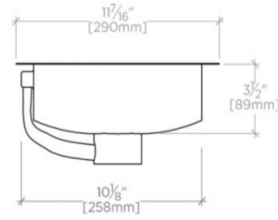
TOP VIEW SCALE: 1/2"=1'-0"



ISO VIEW SCALE: 1/2"=1'-0"



FRONT VIEW SCALE: 1/2"=1'-0"



SIDE VIEW SCALE: 1/2"=1'-0"