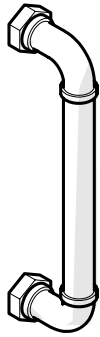


# INSTALLATION GUIDELINES

## HARDWARE

### HENRY 8" SHOWER BACK TO BACK PULL



STYLE
RGHW88

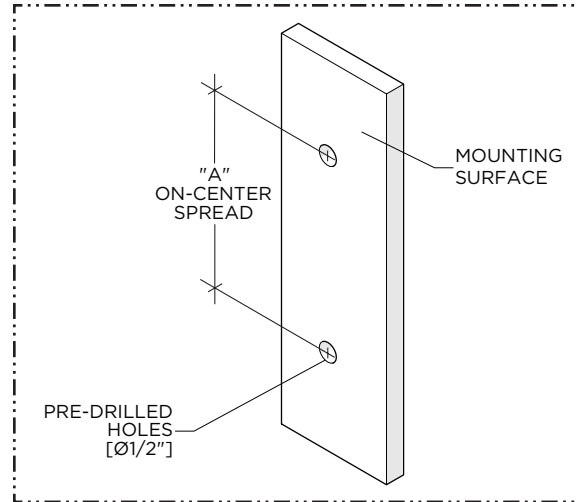
#### IMPORTANT:

- To ensure this product is installed properly, you must read and follow these guidelines.
- The owner/user of this product must keep this information for future reference.
- Be sure your installation conforms to all federal, state, and local codes.
- This product must be installed a professional licensed contractor.
- Inspect this product to ensure you have all the parts required for proper installation.
- To avoid damaging the product, do **NOT** use power tools during installation.
- If further assistance is required, please contact Product Support at 1-800-927-2120 Monday through Friday, 8am - 6pm EST.

#### TECHNICAL DETAILS:

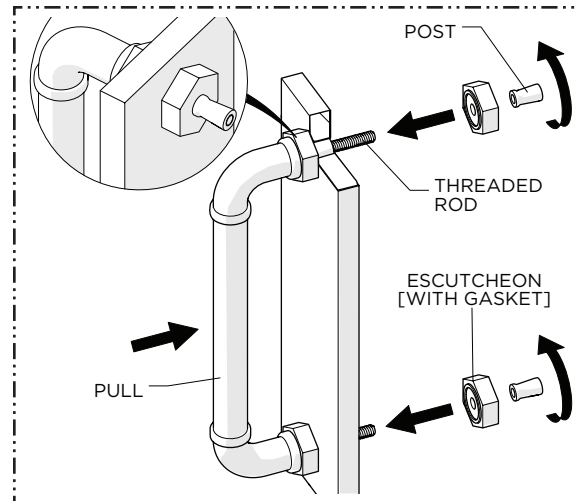
DIM	VALUE
A	8" [203mm]

**NOTE:** The PLASTIC SLEEVE can be cut to accommodate the glass thickness of 3/8" [9mm], 1/2" [12mm] or 3/4" [19mm].



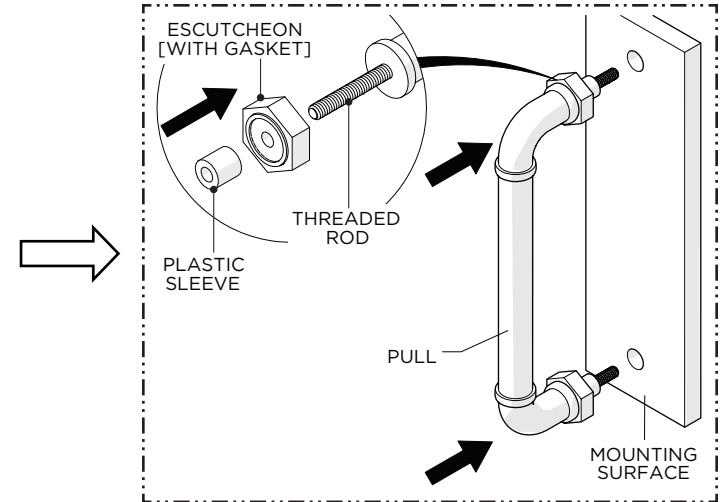
1. Drill two 1/2" diameter holes on the MOUNTING SURFACE at the required on-center spread (DIM A).

**NOTE:** Ensure the holes are level and verify the on-center spread (DIM-A).

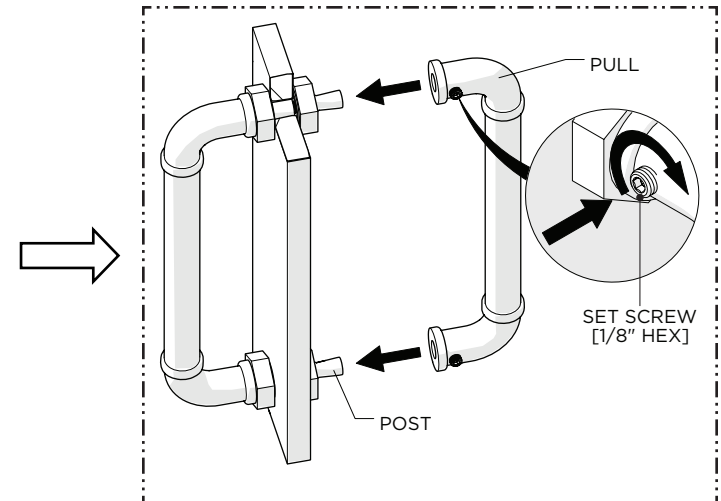


3. Slide the ESCUTCHEONS onto the THREADED RODS then thread and securely tighten the RETAINING POSTS.

**NOTE:** The POSTS should securely hold the ESCUTCHEONS against the MOUNTING SURFACE.



2. Pre-assemble the ESCUTCHEONS and PLASTIC SLEEVES onto the THREADED RODS on the PULL then insert the PLASTIC SLEEVES into the pre-drilled holes.



4. Slide the 2nd PULL onto the RETAINING POSTS until it contacts the ESCUTCHEONS then thread and securely tighten the SET SCREWS.

**NOTE:** The 2nd PULL can be installed with the SET SCREWS facing in either direction as desired.