

## Henry

HNVC40

Henry Volume Control Valve Trim with Metal Cross Handle



SHOWN IN HENRY VOLUME CONTROL VALVE TRIM WITH METAL CROSS HANDLE | HNVC40

### TECHNICAL DETAILS

ADA Compliance: Yes  
 Depth/Width: 75 mm  
 Escutcheon Primary Material: Brass  
 Fittings Hole Diameter: 35 mm  
 Height: 60 mm  
 Integrated Diverter: N  
 Integrated Spray: N  
 Length: 60 mm  
 Number Of Handles: One  
 Pivot: N  
 Primary Material: Brass  
 Spout Swivel: N  
 Spray Included In Unit: N  
 Suggested Application: Bath

### INSPIRATION

Celebrating the connection of industry and art, Henry transitions effortlessly between modern, traditional, and classic settings. These iconic fittings blend 19th-century industrial and artistic references for a look that's forever of the moment—familiar yet wholly original.

### CODES & STANDARDS

ASME A112.18.1/CSA B125.1, State of MA

### PRODUCT FEATURES

The manufacturing process encompasses casting, turning, forging, hand-fitting and hand polishing.

Brass material is used for components

### CERTIFICATIONS

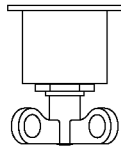


### PRODUCT (NOTES)

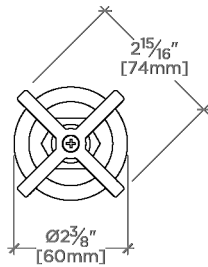
## Henry

HNVC40

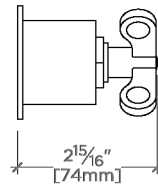
Henry Volume Control Valve Trim with Metal Cross Handle



TOP VIEW SCALE: 3"=1'-0"



FRONT VIEW SCALE: 3"=1'-0"



SIDE VIEW SCALE: 3"=1'-0"