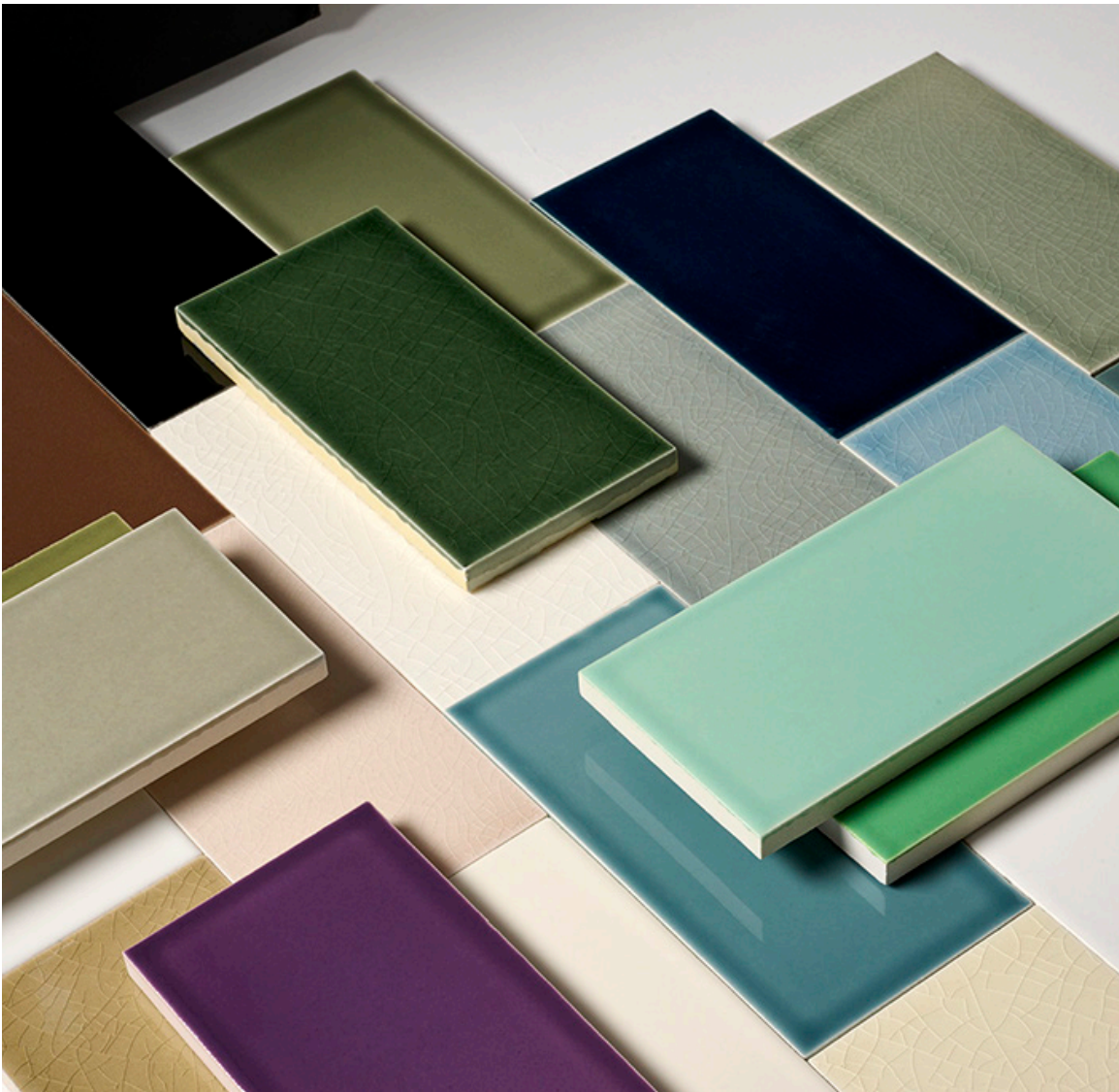




ESTB. 1978

WATERWORKS

Echo



A Waterworks favorite, this beloved dust-pressed tile collection complements any design aesthetic. While the tiles' perfectly uniform shapes allow for vanishing grout lines, variations in the hand-applied glazes give each installation exquisite depth. Choose from an array of colors and textures, with classic cushioned shoulders or straight, sharp edges for a more modern look.



ESTB. 1978

WATERWORKS

Echo

DUST PRESSED FIELD TILE
CUSHIONED EDGE



3" X 6"
EOFO36



4 1/4" X 4 1/4"
EOFO44



6" X 6"
EOFO66



4 1/2" HEXAGON
EOFHX4

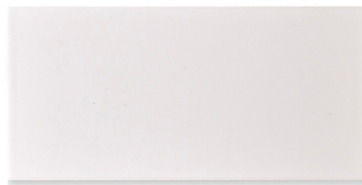
HANDMADE FIELD TILE
STRAIGHT EDGE



3" X 6"
EHF036



4 1/4" X 4 1/4"
EHF044



3 3/4" X 7 1/8"
EHF048



6" X 6"
EHF066

* Coordinating bullnose available



ESTB. 1978

WATERWORKS

Echo

UNIVERSAL TRIM LINERS/RAILS



STANDARD LINER
1/2" X 6"
EOLN02



DOME LINER
1/2" X 6"
EOMO06



SHASTA RAIL
1 5/8" X 6"
EORL02



STANDARD LINER
1" X 6"
EOLN01

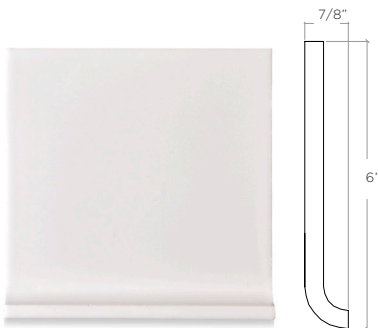


CASCADE RAIL
1 1/2" X 6"
EORL01

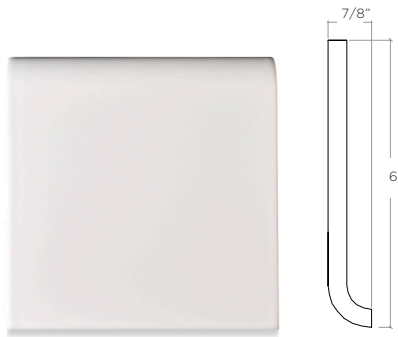


QUARTER ROUND
1" X 6"
EOQR05

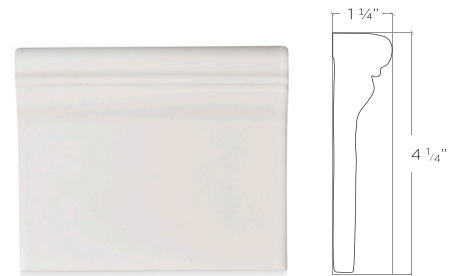
UNIVERSAL TRIM BASES



COVE BASE
6" X 6"
EOLN01



MUD BASE
6" X 6"
EOMB01



CASCADE BASE
5" X 6"
EOSB01



ESTB. 1978

WATERWORKS

Echo

PALETTE



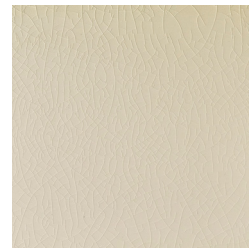
Magnolia V1



Lark V2



Bamboo V2



Eggshell V2



Seashell V2



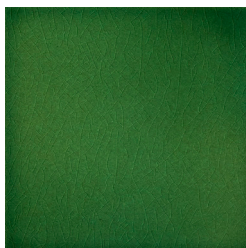
Amber V4



Cobblestone V4



Canyon V4



Evergreen V3



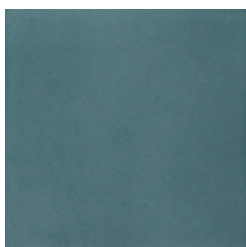
Moleskin V4



Chambray V4



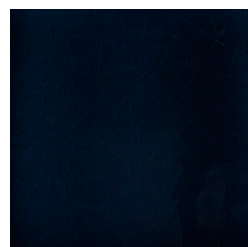
Fig V4



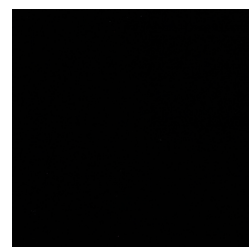
Slate V4



Mulberry V3



Submarine V3



Anchor V1

* See variation chart on page 6
** Note: Select colors available in select sizes.

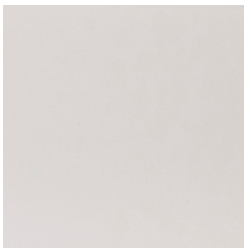


ESTB. 1978

WATERWORKS

Echo

PALETTE



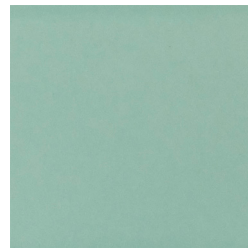
Milkweed

V1



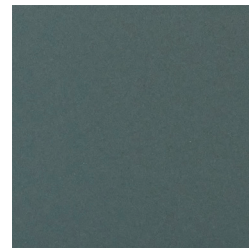
Dolphin

V3



Laurel

V3



Bluet

V3



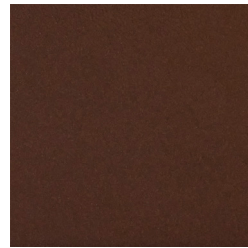
Green Grass

V3



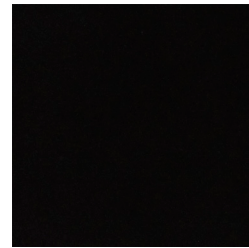
Fiddlehead

V3



Russet

V2



Noir

V1

* See variation chart on page 6

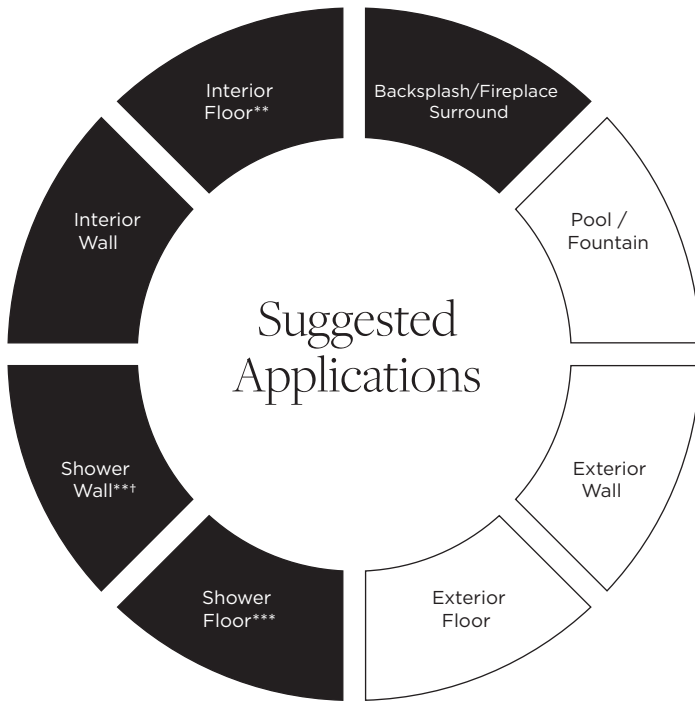
** Note: Select colors available in select sizes.



ESTB. 1978

WATERWORKS

Echo



Recommended Use



Not Recommended Use

Application Notes

* All finishes suitable for use in wet environments if properly installed, sealed, and maintained. All finishes suitable for use in steam showers if properly installed, sealed and maintained.

**Suitable for light traffic floors ONLY in glossy and matte finish if properly installed, sealed and maintained (small format - 3x3 or smaller and mosaics)

† Suitable for tropical/subtropical climates ONLY if properly installed, sealed and maintained.

Installation / Maintenance

- WATERWORKS ASSUMES NO RESPONSIBILITY FOR INSTALLATION
- Installation constitutes acceptance.
- Tile should be installed by a licensed and experienced tile setter.
- Refer to TCNA (Tile Council of North America) or ANSI standards for installation guidelines.
- All tile must be inspected PRIOR to installation.
- Dry lay tile prior to installation to allow for blending of color variation.
- Tile should be sealed PRIOR to grouting. Dark grout can stain crackle tile.
- Waterworks recommends a grouted test panel prior to installation to understand final appearance of grouted materials
- Re-seal tile and grout after installation and maintain regularly.

Variation Level

V1	V2	V3	V4	V5

1. MINIMAL, IF ANY COLOR VARIATION
2. SLIGHT COLOR VARIATION CAN BE EXPECTED
3. A MEDIUM RANGE OF COLOR VARIATION IS TYPICAL; DARKER AND LIGHTER TONES ARE EVIDENT
4. CONSIDERABLE COLOR VARIATION IS TYPICAL; FROM DARKS TO LIGHTS AND SOME TONE CHANGES
5. EXTREME COLOR VARIATION CAN BE EXPECTED - THE RANGE IS OFTEN DIFFERING BUT COMPLEMENTARY

PLEASE REFER TO COLLECTION TEARSHEET FOR VARIATION LEVEL BY COLOR.

SAMPLING IS RECOMMENDED TO UNDERSTAND VARIATION OF MATERIAL

Product Variation

Color, size and surface variation is an inherent characteristic of our handmade tile and should be expected. Refer to our color variation ranking for further details. Please inquire for additional information.

Custom Opportunities Available

Minimums and extended lead-times may apply.

Please contact your local Waterworks showroom or our direct sales team at 800.899.6757.

Thickness

$\frac{5}{16}'''^{**} - \frac{3}{8}'''^{*}$

*Nominal: $\pm \frac{1}{16}''$
**Cushioned Edge

Suggested Grout Lines

$\frac{1}{16}'' - \frac{1}{8}''$