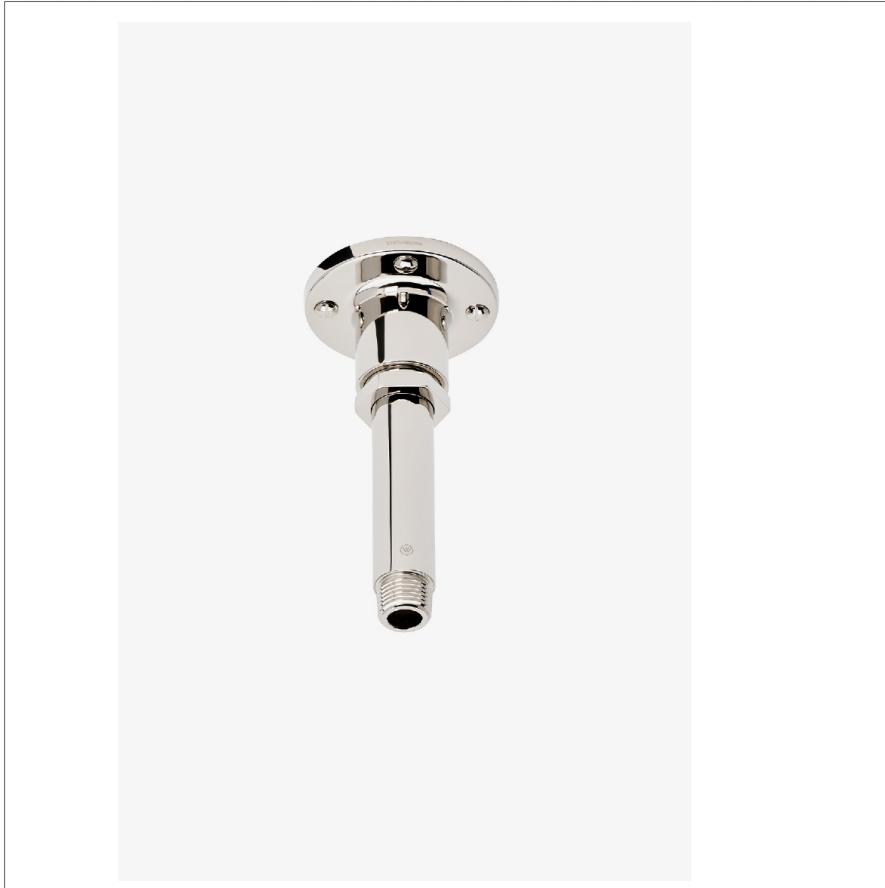


Regulator

RGCH06

Regulator 6" Ceiling Mounted Shower Arm with Flange



SHOWN IN REGULATOR 6" CEILING MOUNTED SHOWER ARM WITH FLANGE | RGCH06

TECHNICAL DETAILS

Fittings Hole Diameter: 32 mm
Inlet Connection Size: 1/2"
Inlet Connection Type: Male NPT
Outlet Connection Size: 1/2"
Outlet Connection Type: Male NPT
Water Pressure Recommended: 3.0 bar

INSPIRATION

With striking scale and unique design, Regulator commands attention through its tribute to early 20th-century boiler room controls, when pride was lavished on hard-built parts. Each handcrafted fitting brings dramatic beauty through powerful proportions and honest details.

CODES & STANDARDS

PRODUCT FEATURES

Compatible with an assortment of Waterworks showerheads, sold separately

Brass Construction

Includes 6" ceiling mounted shower arm

Stocked in Chrome, Nickel and Brass

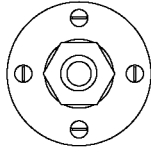
CERTIFICATIONS

PRODUCT (NOTES)

Regulator

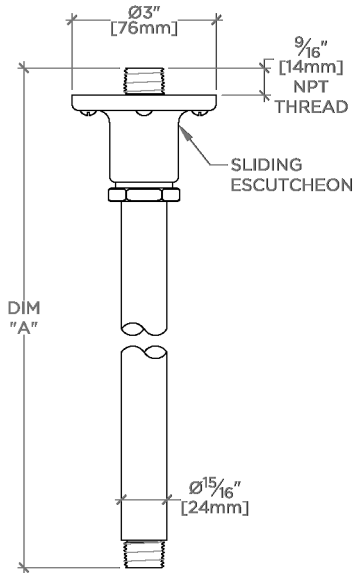
RGCH06

Regulator 6" Ceiling Mounted Shower Arm with Flange

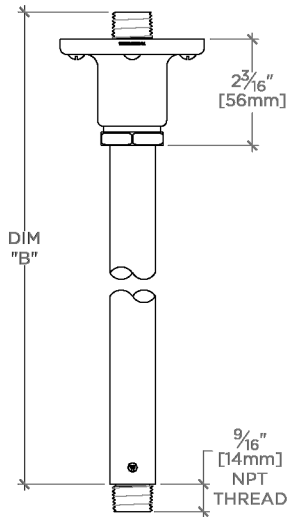


CEILING VIEW SCALE: 3"=1'-0"

STYLE NO.	DIM "A"	DIM "B"
RGCH06	7 ¹ / ₈ " [181mm]	6 ⁹ / ₁₆ " [167mm]
RGCH12	13 ¹ / ₈ " [334mm]	12 ⁹ / ₁₆ " [319mm]
RGCH18	19 ¹ / ₈ " [486mm]	18 ⁹ / ₁₆ " [471mm]
RGCH24	25 ¹ / ₈ " [639mm]	24 ⁹ / ₁₆ " [624mm]



FRONT VIEW SCALE: 3"=1'-0"



SIDE VIEW SCALE: 3"=1'-0"