

## FORMWORK

Formwork Wall Mounted Tub Spout

FM01TS



SHOWN IN FORMWORK WALL MOUNTED TUB SPOUT| FMTSo1

### TECHNICAL DETAILS

Adjustable Shelves: N  
Adjustable versus Fixed Spray: Fixed Spray  
Escutcheon Primary Material: Brass  
Fittings Hole Diameter: 32 mm  
Depth / Width: 230 mm  
Height: 152 mm  
Inlet Connection Size: 1/2"  
Inlet Connection Type: Male G/BSPP  
Installation Type: Wall Mounted  
Integrated Diverter: N  
Integrated Spray: N  
Length: 60 mm  
Number of Holes: One Hole  
Pivot: N  
Primary Material: Brass  
Spout Reach: 7 15/16"  
Spout Swivel: N  
Spray Included in Unit: N  
Suggested Application: Bath  
Water Pressure Maximum: 6.0 bar  
Water Pressure Minimum: 1.5 bar  
Water Pressure Recommended: 3.0 bar

### INSPIRATION

Sculptural forms that defy the ordinary. Unexpected geometry and the transition of the planes create a subtle but warm expression.

### PRODUCT FEATURES

Works seamlessly with Waterworks' Thermostatic or Diverter shower systems.  
Unrestricted flow of approximately 10-12 gallons per minute (gpm)

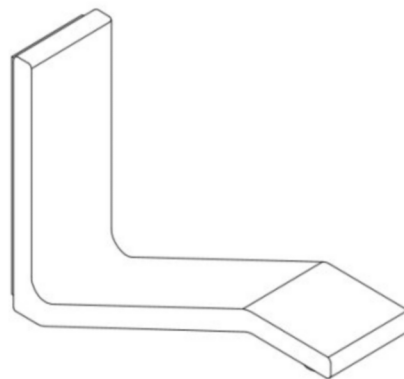
## FORMWORK

Formwork Wall Mounted Tub Spout

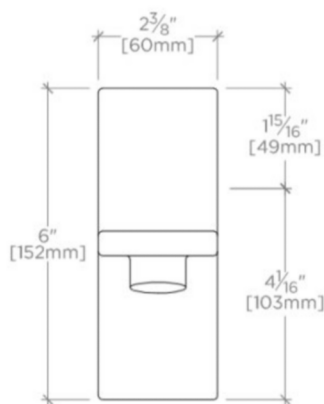
FM01TS



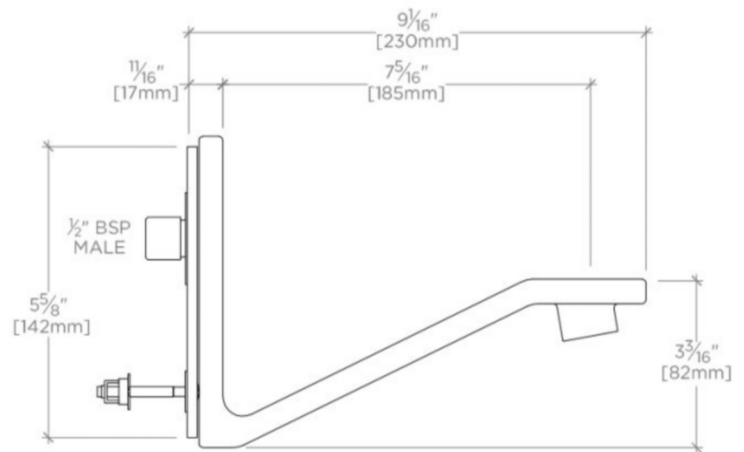
TOP VIEW SCALE: 3"=1'-0"



ISO VIEW SCALE: 3"=1'-0"



FRONT VIEW SCALE: 3"=1'-0"



SIDE VIEW SCALE: 3"=1'-0"