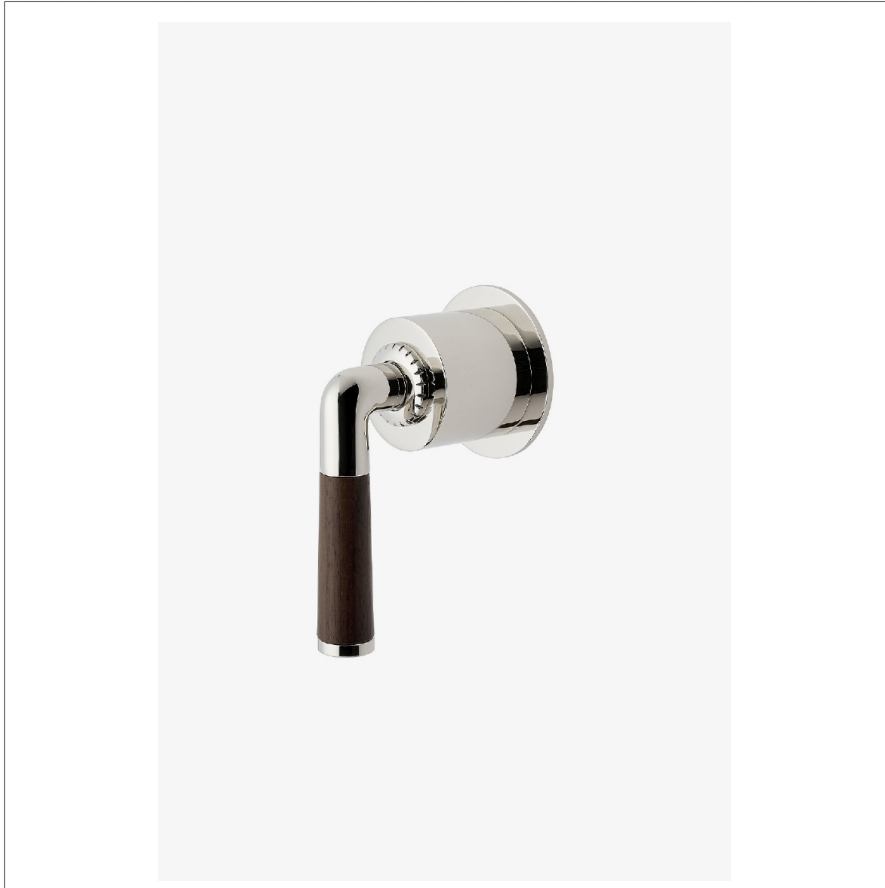


HENRY CHRONOS

CNVC14

Henry Chronos Volume Control with Walnut Lever Handle



SHOWN IN HENRY CHRONOS VOLUME CONTROL WITH WALNUT LEVER HANDLE | CNVC14

TECHNICAL DETAILS

ADA Compliance: Yes
Fittings Hole Diameter: 1 3/8"
Handle Turn Angle: Quarter Turn
Number Of Holes: One Hole
Primary Material: Brass

INSPIRATION

Inspired by dive watches, Henry Chronos radiates design prowess and technical precision. Chronos retains the design integrity of our original, iconic Henry collection, while imbuing it with modern details and exquisite materials.

CODES & STANDARDS

ASME A112.18.1/CSA B125.1, State of MA

PRODUCT FEATURES

Features Walnut Lever Handle

Used to Control Water Flow to a Single Waterway Outlet

Stocked in Brass, Chrome and Nickel

Requires Rough Valve, Sold Separately: GUV18/GUV19 or GUV16 /GUV17

CERTIFICATIONS

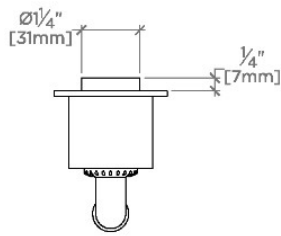


PRODUCT (NOTES)

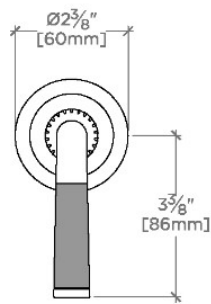
HENRY CHRONOS

CNVC14

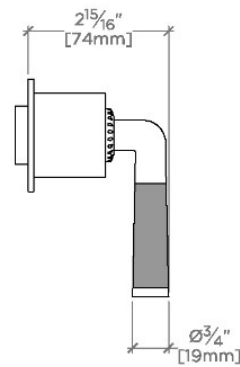
Henry Chronos Volume Control with Walnut Lever Handle



TOP VIEW SCALE: 3"=1'-0"



FRONT VIEW SCALE: 3"=1'-0"



SIDE VIEW SCALE: 3"=1'-0"