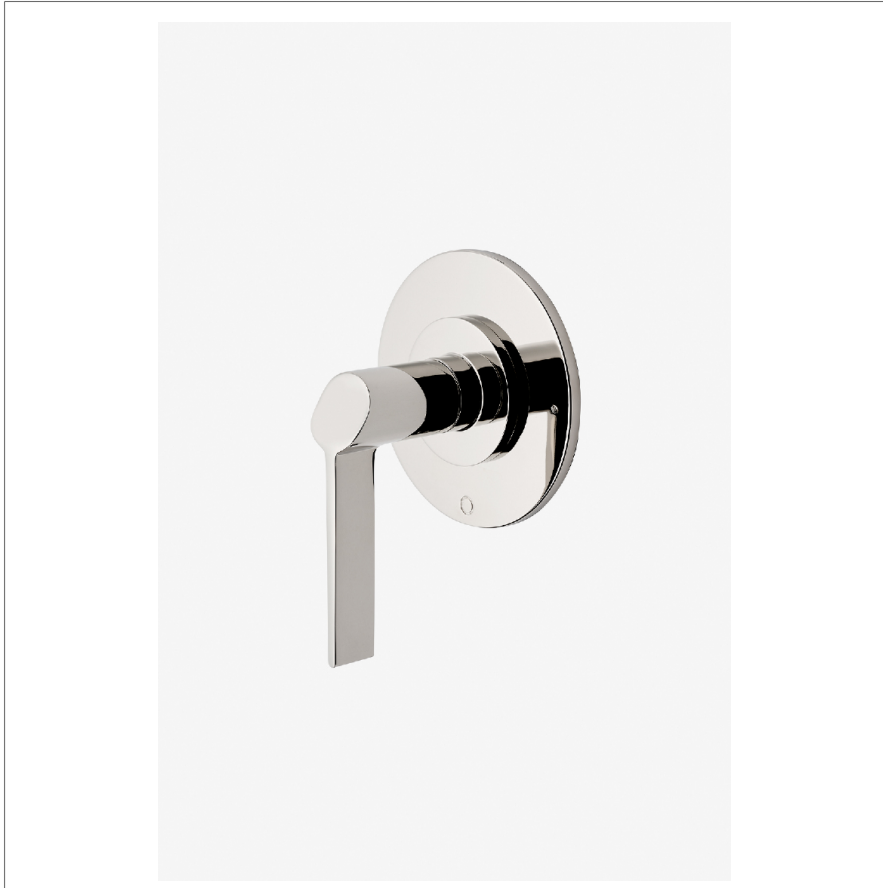


FINOT

NO2T60

Finot Two Way Thermostatic Diverter Trim with Modern Dots and Slope Lever Handle



SHOWN IN FINOT TWO WAY THERMOSTATIC DIVERTER TRIM WITH MODERN DOTS AND SLOPE LEVER HANDLE | NO2T60

TECHNICAL DETAILS

ADA Compliance: Yes
Fittings Hole Diameter: 2"
Handle Turn Angle: Quarter Turn
Integrated Diverter: N
Number Of Holes: One Hole
Primary Material: Brass

INSPIRATION

Finot seamlessly blends meticulous details with contemporary sensibility. A true integration of design and engineering expertise, this collection is comprised of parts that are decisively cast and forged to achieve painstaking precision and refinement.

CODES & STANDARDS

NO2T60X, ASME A112.18.1/CSA B125.1

PRODUCT FEATURES

Slope Lever Handle

For Use With a Thermostatic Shower System and Two Waterway Outlets

Features Modern Dots Representing Outlet Position

Stocked in Chrome, Nickel, Brass and Dark Nickel

Requires Rough Valve, Sold Separately: GUDV2T

CERTIFICATIONS

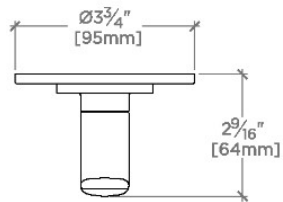


PRODUCT (NOTES)

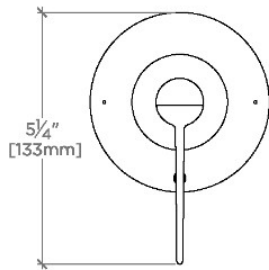
FINOT

NO2T60

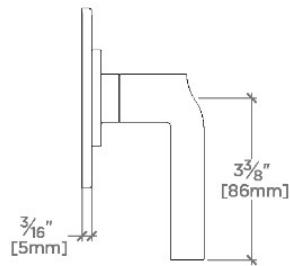
Finot Two Way Thermostatic Diverter Trim with Modern Dots
and Slope Lever Handle



TOP VIEW SCALE: 3"=1'-0"



FRONT VIEW SCALE: 3"=1'-0"



SIDE VIEW SCALE: 3"=1'-0"