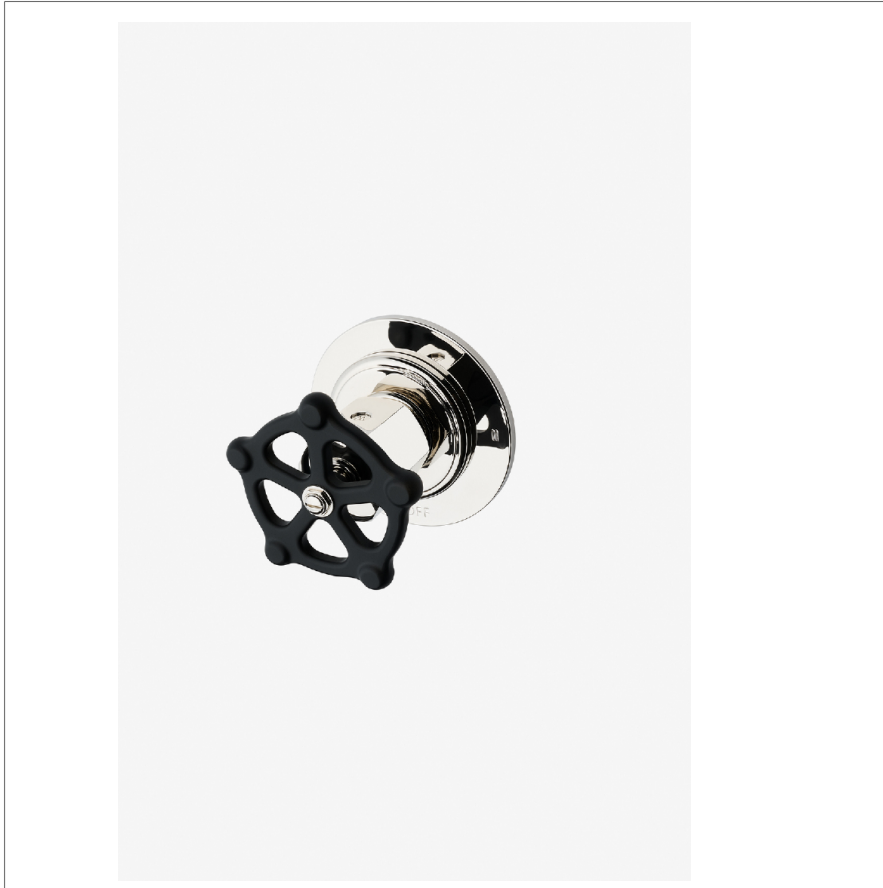


Regulator

RG2T01

Regulator Two Way Diverter Valve Trim for Thermostatic with Roman Numerals and Two-Tone Wheel Handle



SHOWN IN REGULATOR TWO WAY DIVERTER VALVE TRIM FOR THERMOSTATIC WITH ROMAN NUMERALS AND TWO-TONE WHEEL HANDLE | RG2T01

TECHNICAL DETAILS

ADA Compliance: No
 Depth/Width: 81 mm
 Escutcheon Primary Material: Brass
 Fittings Hole Diameter: 64 mm
 Handle Turn Angle: Quarter Turn Each Way
 Height: 95 mm
 Length: 95 mm
 Primary Material: Brass
 Suggested Application: Bath
 Water Pressure Maximum: 6.0 bar
 Water Pressure Minimum: 1.5 bar
 Water Pressure Recommended: 3.0 bar

INSPIRATION

A play on industrial controls from the early 1900s, when pride was lavished on parts. Translated to handcrafted, fittings project rugged beauty through powerful, detailed shapes.

CODES & STANDARDS

ASME A112.18.1/CSA B125.1, State of MA

PRODUCT FEATURES

Two-Tone Wheel Handle

For Use With a Thermostatic Shower System and Two Waterway Outlets

Features Roman Numerals Representing Outlet Position

Stocked in Nickel/Matte Black and Brass/Matte Black

Requires valve rough sold separately

CERTIFICATIONS

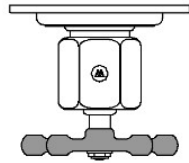


PRODUCT (NOTES)

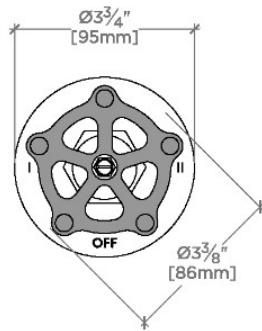
Regulator

RG2T01

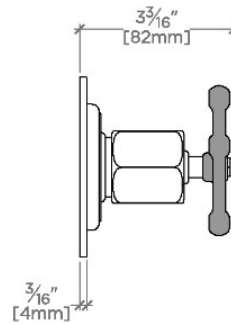
Regulator Two Way Diverter Valve Trim for Thermostatic with Roman Numerals and Two-Tone Wheel Handle



TOP VIEW SCALE: 3"=1'-0"



FRONT VIEW SCALE: 3"=1'-0"



SIDE VIEW SCALE: 3"=1'-0"