

FLYTE

FLTH32

Flyte Integrated Thermostatic and Diverter Trim with Lever Handle



SHOWN IN FLYTE INTEGRATED THERMOSTATIC AND DIVERTER TRIM WITH LEVER HANDLE | FLTH32

TECHNICAL DETAILS

ADA Compliance: Yes
Integrated Diverter: Y
Number Of Holes: One Hole
Primary Material: Brass

INSPIRATION

Pure Modernism. Like minimalist works of art, the elegant proportions of these light, fluid elements bring sculptural reference to a room.

CODES & STANDARDS

ASME A112.18.1/CSA B125.1, State of MA

PRODUCT FEATURES

Features Lever Handle

Smooth handle operation with haptic "clicks" at each diverter position for tactile feedback

A solid brass trim plate features engraved H and C markings

Stocked in Chrome, Nickel, Brass and Matte Black

Requires rough valve, sold separately: GUTH62 or GUTH63 (USA) or GU62TH or GU63TH (UK/International)

CERTIFICATIONS

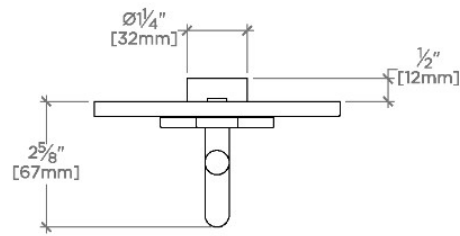


PRODUCT (NOTES)

FLYTE

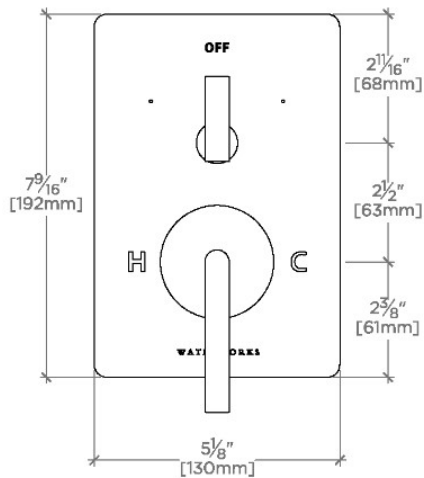
FLTH32

Flyte Integrated Thermostatic and Diverter Trim with Lever Handle



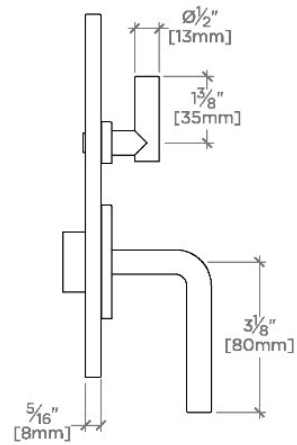
TOP VIEW

SCALE: 3"=1'-0"



FRONT VIEW

SCALE: 3"=1'-0"



SIDE VIEW

SCALE: 3"=1'-0"