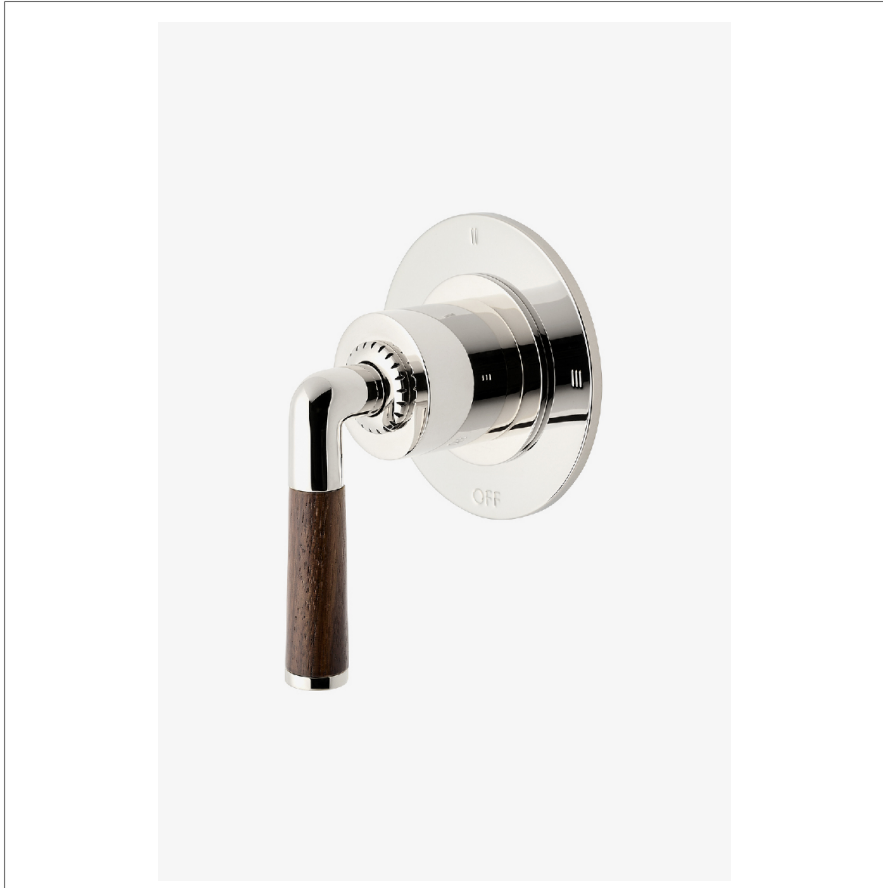


## HENRY CHRONOS

CN3T14

Henry Chronos Three Way Diverter Valve Trim for  
Thermostatic with Roman Numerals and Walnut Lever  
Handle



SHOWN IN HENRY CHRONOS THREE WAY DIVERTER VALVE TRIM FOR THERMOSTATIC WITH ROMAN NUMERALS AND WALNUT  
LEVER HANDLE | CN3T14

### INSPIRATION

Inspired by dive watches, Henry Chronos radiates design prowess and technical precision. Chronos retains the design integrity of our original, iconic Henry collection, while imbuing it with modern details and exquisite materials.

### PRODUCT FEATURES

- Features Walnut Lever Handle
- For Use With a Thermostatic Shower System and Three Waterway Outlets
- Features Roman Numerals Representing Outlet Position
- Stocked in Brass, Chrome and Nickel
- Requires valve rough sold separately

### TECHNICAL DETAILS

ADA Compliance: Yes  
Fittings Hole Diameter: 2"  
Handle Turn Angle: Full Turn  
Number Of Holes: One Hole  
Primary Material: Brass

### CODES & STANDARDS

ASME A112.18.1/CSA B125.1, State of MA

### CERTIFICATIONS

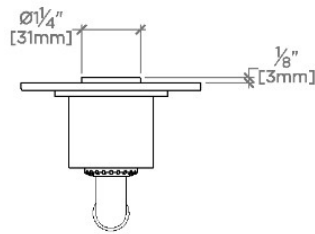


### PRODUCT (NOTES)

## HENRY CHRONOS

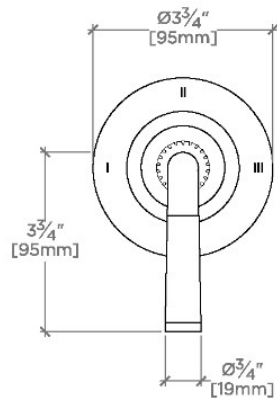
CN3T14

Henry Chronos Three Way Diverter Valve Trim for  
Thermostatic with Roman Numerals and Walnut Lever  
Handle



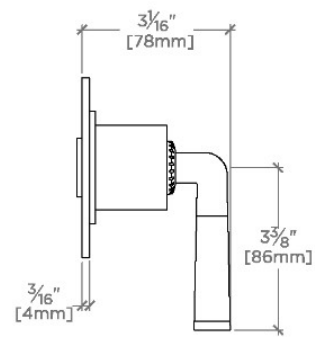
TOP VIEW

SCALE: 3"=1'-0"



FRONT VIEW

SCALE: 3"=1'-0"



SIDE VIEW

SCALE: 3"=1'-0"