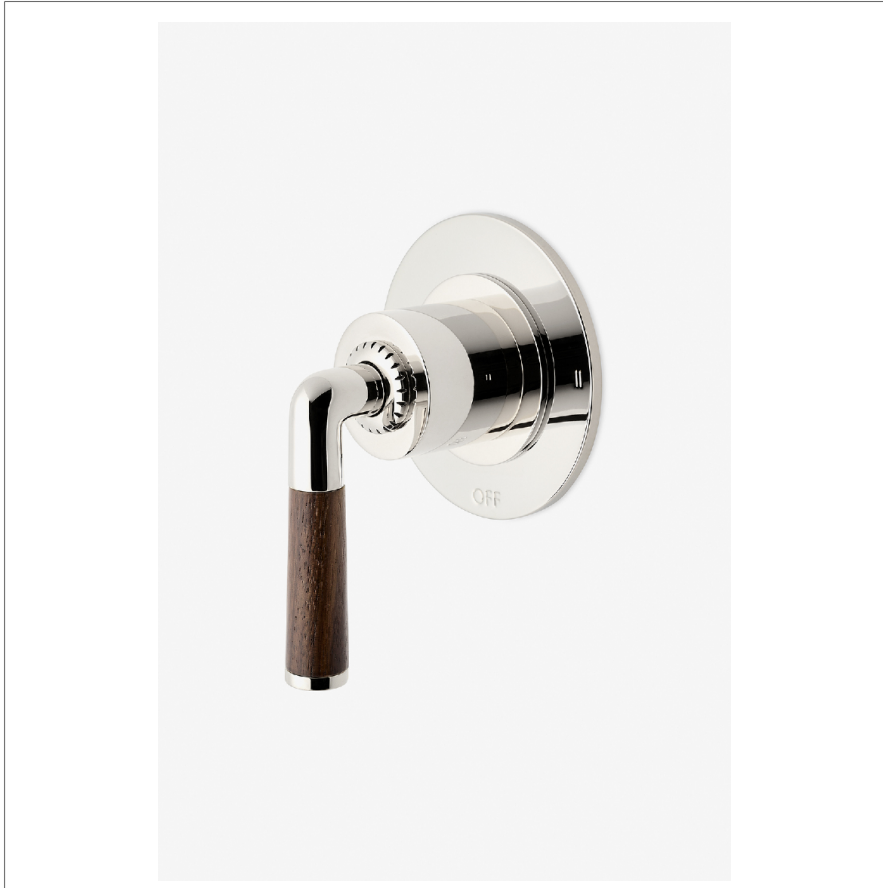


HENRY CHRONOS

CN2T14

Henry Chronos Two Way Diverter Valve Trim for
Thermostatic with Roman Numerals and Walnut Lever
Handle



SHOWN IN HENRY CHRONOS TWO WAY DIVERTER VALVE TRIM FOR THERMOSTATIC WITH ROMAN NUMERALS AND WALNUT
LEVER HANDLE | CN2T14

INSPIRATION

Inspired by dive watches, Henry Chronos radiates design prowess and technical precision. Chronos retains the design integrity of our original, iconic Henry collection, while imbuing it with modern details and exquisite materials.

TECHNICAL DETAILS

ADA Compliance: Yes
Fittings Hole Diameter: 2"
Handle Turn Angle: Quarter Turn Each Way
Number Of Holes: One Hole
Primary Material: Brass

CODES & STANDARDS

ASME A112.18.1/CSA B125.1, State of MA

PRODUCT FEATURES

Features Walnut Lever Handle

For Use With a Thermostatic Shower System and Two Waterway Outlets

Features Roman Numerals Representing Outlet Position

Stocked in Brass, Chrome and Nickel

Requires valve rough sold separately

CERTIFICATIONS

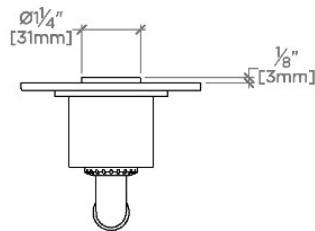


PRODUCT (NOTES)

HENRY CHRONOS

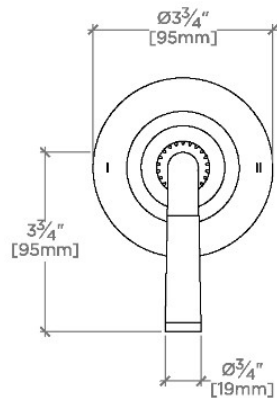
CN2T14

Henry Chronos Two Way Diverter Valve Trim for
Thermostatic with Roman Numerals and Walnut
Handle



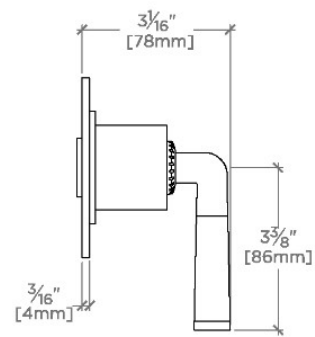
TOP VIEW

SCALE: 3"=1'-0"



FRONT VIEW

SCALE: 3"=1'-0"



SIDE VIEW

SCALE: 3"=1'-0"