

FLYTE

FLTH31

Flyte Integrated Thermostatic and Volume Control Trim with Lever Handle



SHOWN IN FLYTE INTEGRATED THERMOSTATIC AND VOLUME CONTROL TRIM WITH LEVER HANDLE | FLTH31

TECHNICAL DETAILS

ADA Compliance: Yes
Number Of Holes: One Hole
Primary Material: Brass

INSPIRATION

Pure Modernism. Like minimalist works of art, the elegant proportions of these light, fluid elements bring sculptural reference to a room.

CODES & STANDARDS

ASME A112.18.1/CSA B125.1, State of MA

PRODUCT FEATURES

Features Lever Handle

Smooth handle operation controls water volume

A solid brass trim plate features engraved H and C markings

Stocked in Chrome, Nickel, Brass and Matte Black

Requires rough valve, sold separately: GUTH61 (USA) or GU61TH (UK/International)

CERTIFICATIONS

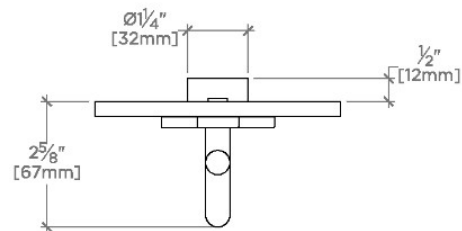


PRODUCT (NOTES)

FLYTE

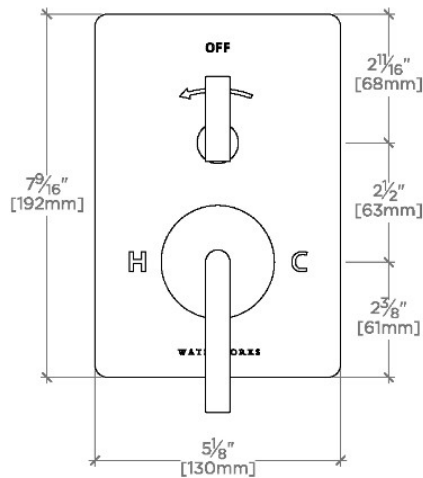
FLTH31

Flyte Integrated Thermostatic and Volume Control Trim with Lever Handle



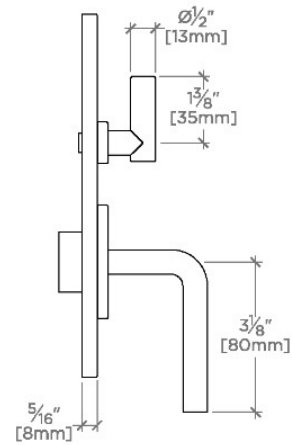
TOP VIEW

SCALE: 3"=1'-0"



FRONT VIEW

SCALE: 3"=1'-0"



SIDE VIEW

SCALE: 3"=1'-0"