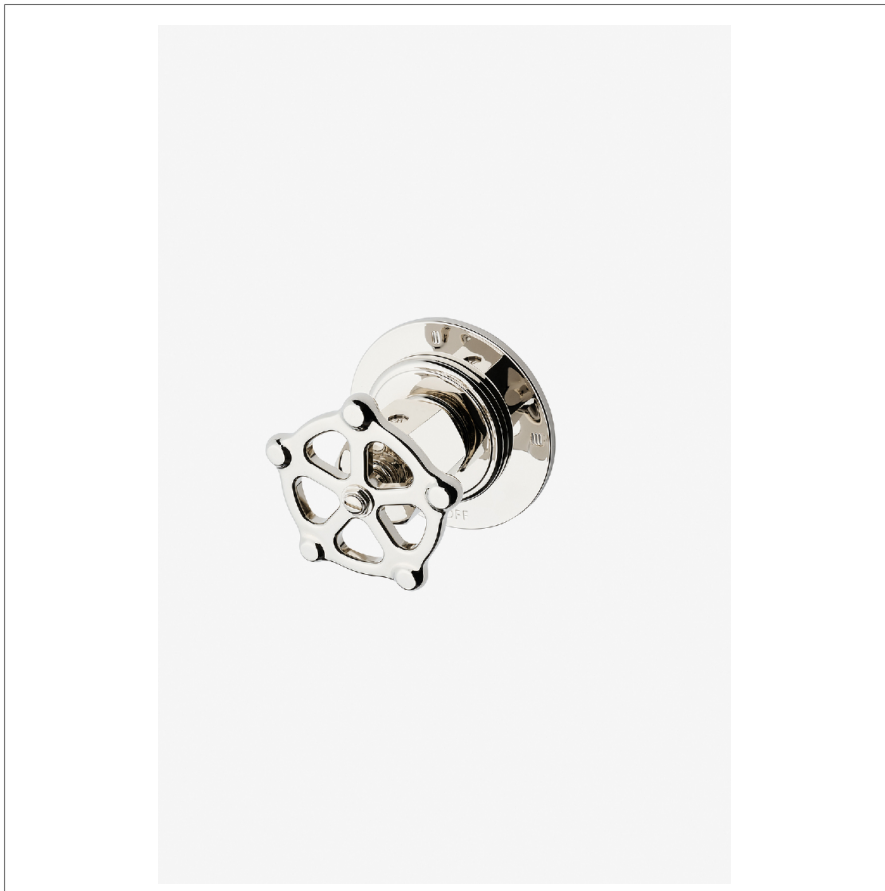


REGULATOR

RG3T02

Regulator Three Way Diverter Valve Trim for Thermostatic
with Roman Numerals and Wheel Handle



SHOWN IN REGULATOR THREE WAY DIVERTER VALVE TRIM FOR THERMOSTATIC WITH ROMAN NUMERALS AND WHEEL HANDLE
| RG3T02

TECHNICAL DETAILS

ADA Compliance: No
Depth/Width: 3 3/16"
Escutcheon Primary Material: Brass
Fittings Hole Diameter: 2 1/2"
Height: 3 3/4"
Length: 3 3/4"
Primary Material: Brass
Suggested Application: Bath
Water Pressure Maximum: 85.0 psi
Water Pressure Minimum: 20.0 psi
Water Pressure Recommended: 45.0 psi

INSPIRATION

A play on industrial controls from the early 1900s, when pride was lavished on parts. Translated to handcrafted, fittings project rugged beauty through powerful, detailed shapes.

CODES & STANDARDS

ASME A112.18.1/CSA B125.1, State of MA

PRODUCT FEATURES

Wheel Handle

For Use With a Thermostatic Shower System and Three Waterway Outlets

Features Roman Numerals Representing Outlet Position

Stocked in Nickel and Brass

Requires valve rough sold separately

CERTIFICATIONS

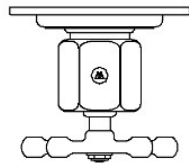


PRODUCT (NOTES)

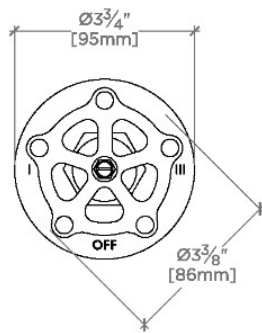
REGULATOR

RG3T02

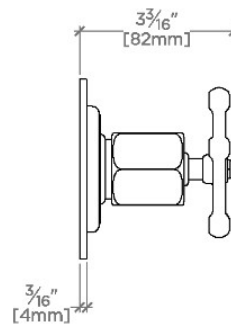
Regulator Three Way Diverter Valve Trim for Thermostatic
with Roman Numerals and Wheel Handle



TOP VIEW SCALE: 3"=1'-0"



FRONT VIEW SCALE: 3"=1'-0"



SIDE VIEW SCALE: 3"=1'-0"