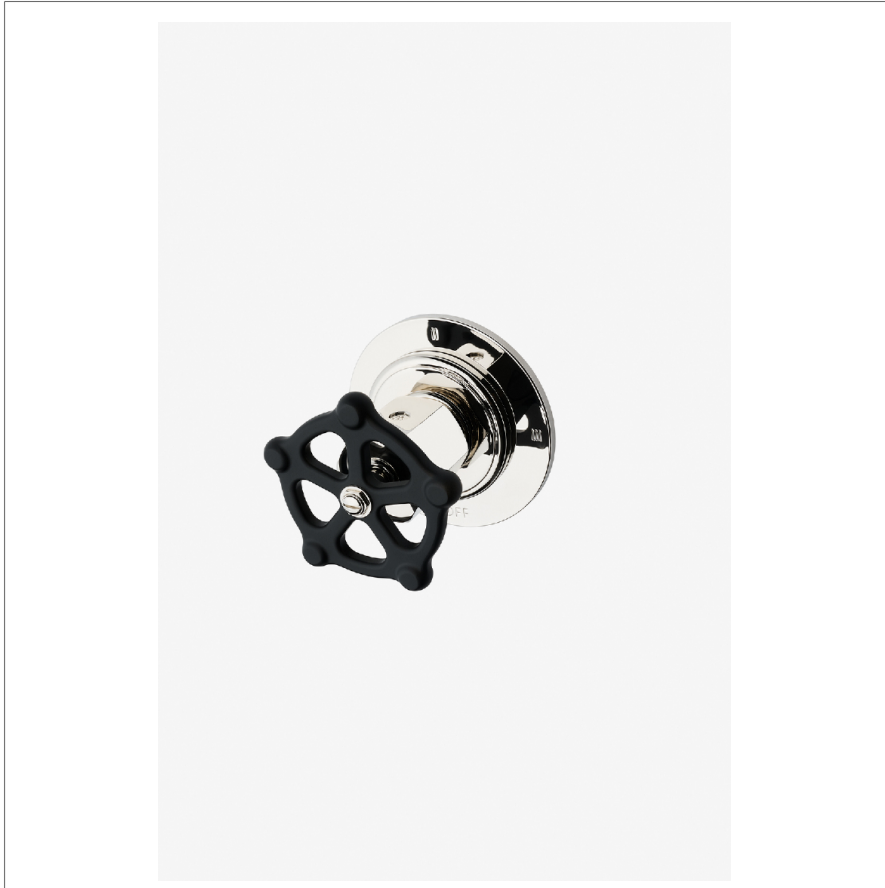


REGULATOR

RG3T01

Regulator Three Way Diverter Valve Trim for Thermostatic
with Roman Numerals and Two-Tone Wheel Handle



SHOWN IN REGULATOR THREE WAY DIVERTER VALVE TRIM FOR THERMOSTATIC WITH ROMAN NUMERALS AND TWO-TONE
WHEEL HANDLE | RG3T01

INSPIRATION

A play on industrial controls from the early 1900s, when pride was lavished on parts. Translated to handcrafted, fittings project rugged beauty through powerful, detailed shapes.

TECHNICAL DETAILS

ADA Compliance: No
Depth/Width: 3 3/16"
Escutcheon Primary Material: Brass
Fittings Hole Diameter: 2 1/2"
Height: 3 3/4"
Length: 3 3/4"
Primary Material: Brass
Suggested Application: Bath
Water Pressure Maximum: 85.0 psi
Water Pressure Minimum: 20.0 psi
Water Pressure Recommended: 45.0 psi

CODES & STANDARDS

ASME A112.18.1/CSA B125.1, State of MA

PRODUCT FEATURES

Two-Tone Wheel Handle

For Use With a Thermostatic Shower System and Three Waterway Outlets

Features Roman Numerals Representing Outlet Position

Stocked in Nickel/Matte Black and Brass/Matte Black

Requires valve rough sold separately

CERTIFICATIONS

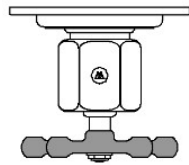


PRODUCT (NOTES)

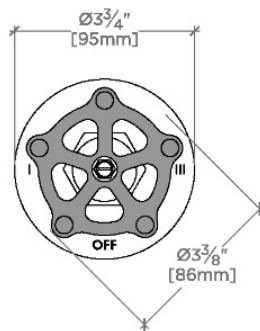
REGULATOR

RG3T01

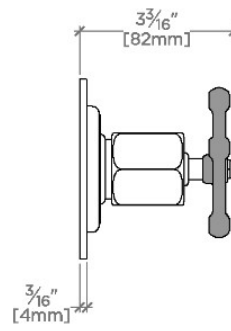
Regulator Three Way Diverter Valve Trim for Thermostatic
with Roman Numerals and Two-Tone Wheel Handle



TOP VIEW SCALE: 3"=1'-0"



FRONT VIEW SCALE: 3"=1'-0"



SIDE VIEW SCALE: 3"=1'-0"