

## Flyte

FLTH21

Flyte Integrated Thermostatic and Volume Control Trim with Cross Handle



SHOWN IN FLYTE INTEGRATED THERMOSTATIC AND VOLUME CONTROL TRIM WITH CROSS HANDLE | FLTH21

### TECHNICAL DETAILS

ADA Compliance: Yes  
Number Of Holes: One Hole  
Primary Material: Brass

### INSPIRATION

Pure Modernism. Like minimalist works of art, the elegant proportions of these light, fluid elements bring sculptural reference to a room.

### CODES & STANDARDS

ASME A112.18.1/CSA B125.1, State of MA

### PRODUCT FEATURES

Features Cross Handle

Smooth handle operation controls water volume

A solid brass trim plate features engraved H and C markings

Stocked in Chrome, Nickel, Brass and Matte Black

Requires rough valve, sold separately: GUTH61 (USA) or GU61TH (UK/International)

### CERTIFICATIONS

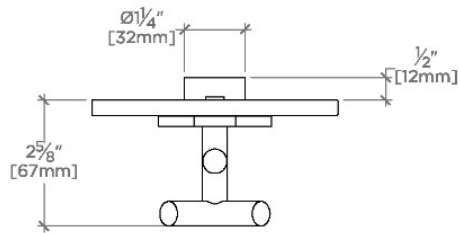


### PRODUCT (NOTES)

## Flyte

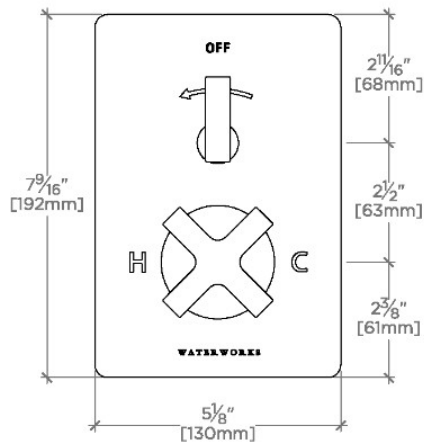
FLTH21

Flyte Integrated Thermostatic and Volume Control Trim with Cross Handle



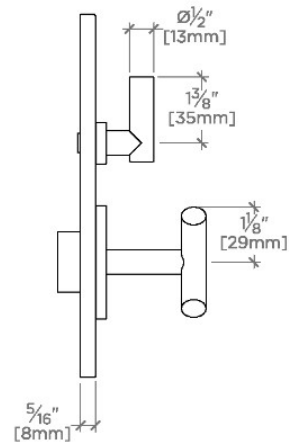
TOP VIEW

SCALE: 3"=1'-0"



FRONT VIEW

SCALE: 3"=1'-0"



SIDE VIEW

SCALE: 3"=1'-0"