

## Normandy

NOLV24

Normandy Drop In or Undermount Oval Hammered Copper Lavatory Sink 13 3/16" x 10 7/16" x 5 11/16"



SHOWN IN NORMANDY DROP IN OR UNDERMOUNT OVAL HAMMERED COPPER LAVATORY SINK 13 3/16" X 10 7/16" X 5 11/16" | NOLV24

### INSPIRATION

Like the antique French copper cookware that inspired them, our Normandy sinks lend a special warmth and richness to any environment. Each pure red copper design is hammered and polished by hand according to the old French tradition.

### PRODUCT FEATURES

- Handcrafted in France from sheets of copper and formed in individual molds.
- The Normandy sinks are finished with a burnishing hammer and polished by hand.
- Suitable for master baths and powder rooms.

### TECHNICAL DETAILS

- ADA Compliance: When installed per ADA guidelines
- Bowl Shape: Oval
- Depth To Overflow: 64 mm
- Depth/Width: 265 mm
- Drain Hole Depth: 36 mm
- Drain Hole Diameter: 45 mm
- Drain Style: Center Drain
- Height: 144 mm
- Installation Type: Drop In or Undermount
- Length: 335 mm
- Number Of Holes: Two Hole
- Outer Rim Shape: Oval
- Overflow Opening: Yes
- Primary Material: Hammered Copper
- Suggested Application: Bath

### CODES & STANDARDS

### CERTIFICATIONS

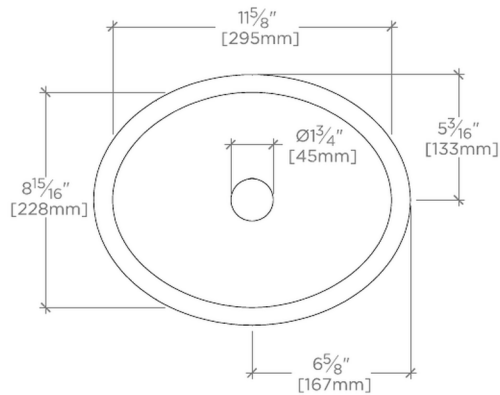
Dimensions of sinks are nominal and are subject to slight variations.

### PRODUCT (NOTES)

## Normandy

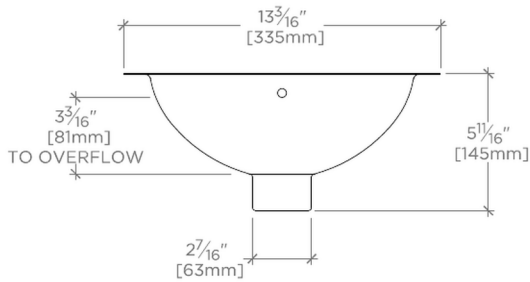
NOLV24

Normandy Drop In or Undermount Oval Hammered Copper  
Lavatory Sink 13 3/16" x 10 7/16" x 5 11/16"



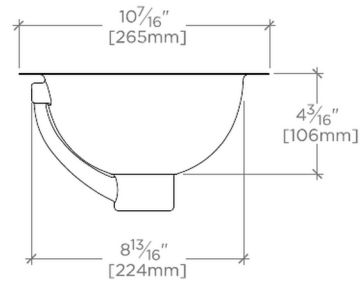
TOP VIEW

SCALE: 1 1/2"=1'-0"



FRONT VIEW

SCALE: 1 1/2"=1'-0"



SIDE VIEW

SCALE: 1 1/2"=1'-0"