

## HENRY

HNVN10

Henry Double Metal / Mirror Vanity 76" x 20 11/16" x 32 1/4"



### TECHNICAL DETAILS

ADA Compliance: No  
Adjustable Levelers / Feet: N  
Depth / Width: 20 11/16"  
Height: 32 1/4"  
Installation Type: Freestanding  
Leg Material: Metal  
Length: 76"  
Number of Legs: Four  
Primary Material: Metal / Mirror  
Rough-in Supply Height Recommended: 21"  
Rough-in Waste Height Recommended: 19"  
Sink Visibility: N  
Suggested Application: Bath  
Top Attachment Method: Top rests on top of vanity

### INSPIRATION

Influenced by the connection of industry and art Henry easily transitions between modern, traditional, utilitarian and classic settings.

### PRODUCT FEATURES

Simple lines, elegant proportions and function have been incorporated into the design of our Henry vanity. The layering of metal and beveled mirror is at once refined and unmistakably complimentary to the other materials in the space.

The Henry vanity is an effortlessly sophisticated solution for practical storage that is modern and tailored and very stylish with a hint of glamour.



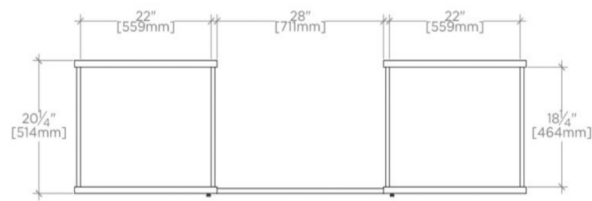
### PRODUCT (NOTES)

Slab countertop and sink sold separately from washstand?custom options available

## HENRY

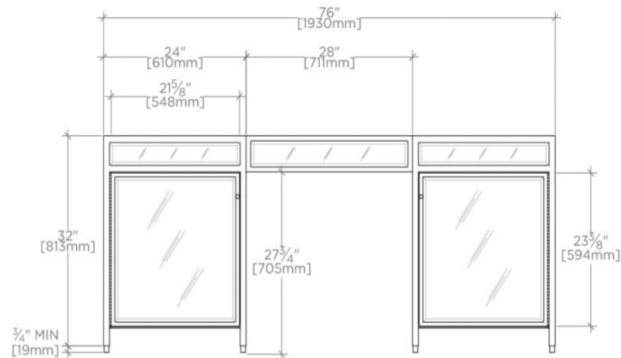
HNVN10

Henry Double Metal / Mirror Vanity 76" x 20 11/16" x 32 1/4"



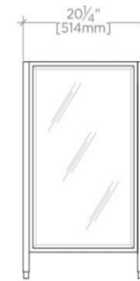
TOP VIEW

SCALE: 1/2"=1'-0"



FRONT VIEW

SCALE: 1/2"=1'-0"



SIDE VIEW

SCALE: 1/2"=1'-0"