



ESTB. 1978

WATERWORKS

Parramore



Parramore mosaics offer options which echo the classical designs of a timeless art form. A fading field of pale shades adds depth, texture and subtle sophistication to the bath. A monogram border framing a grid of field tile instantly adds an air of refinement to a shower wall or floor.



ESTB. 1978

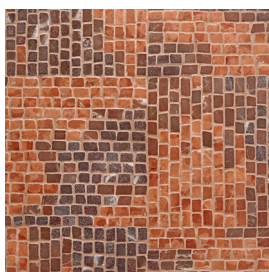
WATERWORKS

Parramore

DECORATIVE MOSAIC



Abrash



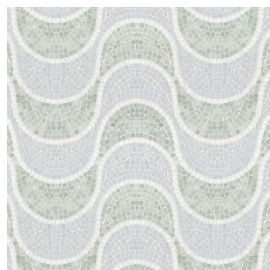
Abrash
Block



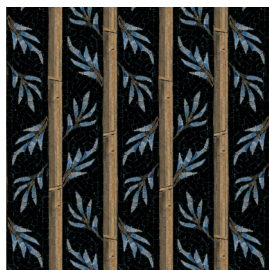
Adona



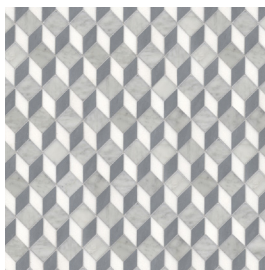
Aquarius



Aquarius with Stripe



Bamboo



Baby Blocks



Beni



Solid with Tesserae
Beatrice



Tesserae
Beatrice



Brocade



Colorforms



Charlemagne



Chopsticks



Clara



Copley
Solid

* NOT TO SCALE

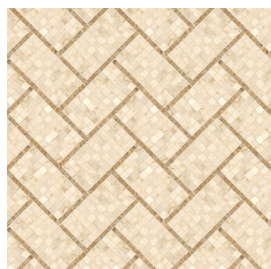


ESTB. 1978

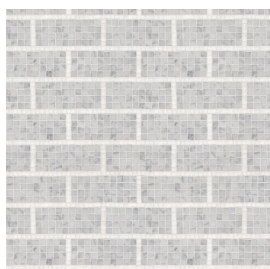
WATERWORKS

Parramore

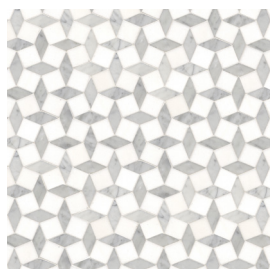
DECORATIVE MOSAIC



Copley
Herringbone



Copley
Tesserae



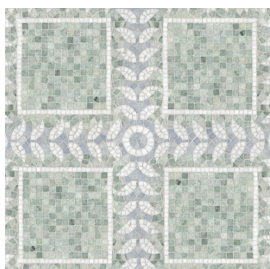
Desdemona



Drift



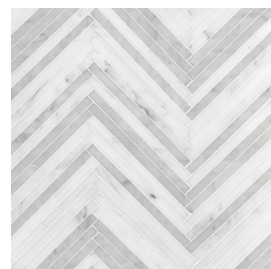
Femi



Furlong



Harris Island



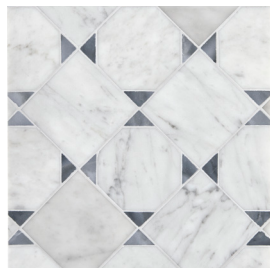
Ikat



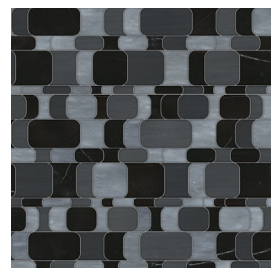
Ingot Weave



Key



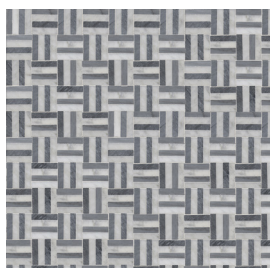
Key Inlay



Lara



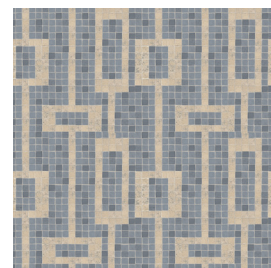
Lila



Lattice



Marguerite



Mondrian

* NOT TO SCALE

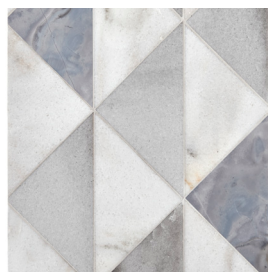


ESTB. 1978

WATERWORKS

Parramore

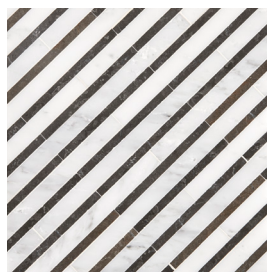
DECORATIVE MOSAIC



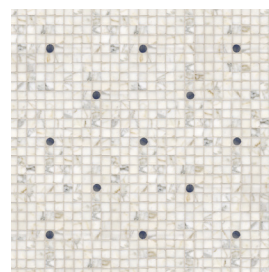
Origami



Oval Overlay



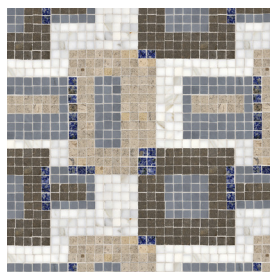
Pinwale



Polka Dot



Quilt Block



Razmatazz



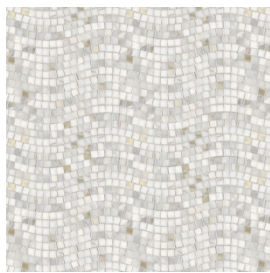
Rhombic All Over



Rhombic Blocks



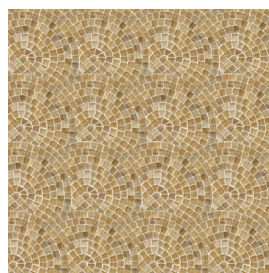
Ringlet



River Run



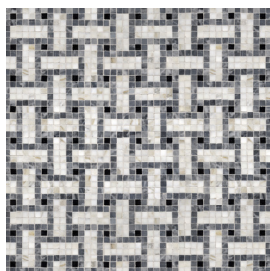
Sine Wave



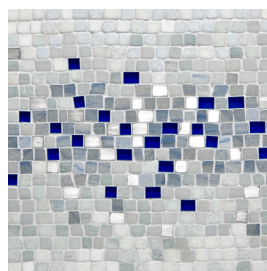
Scallop



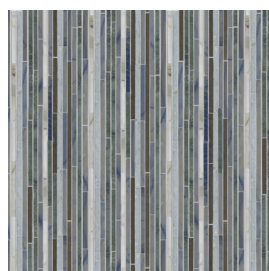
Simply Sticks



Stradavarius



Stratus



1cm Stalks

* NOT TO SCALE

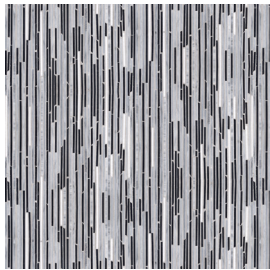


ESTB. 1978

WATERWORKS

Parramore

DECORATIVE MOSAIC



.5cm Tatami



.5cm Tatami Blocks
Straight



.5cm Tatami Blocks
Diagonal



Theda



Tri-Petal



ESTB. 1978

WATERWORKS

Parramore

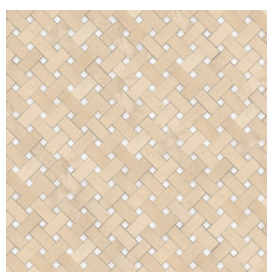
STANDARD MOSAIC



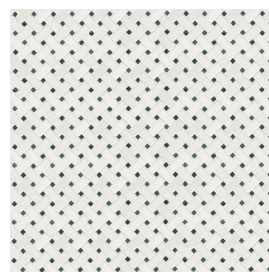
Arc D'midi



3cm x 5cm
Basketweave*



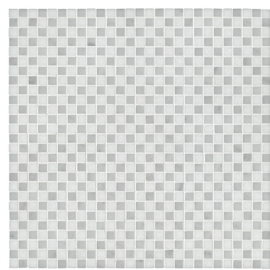
3cm x 6cm
Basketweave



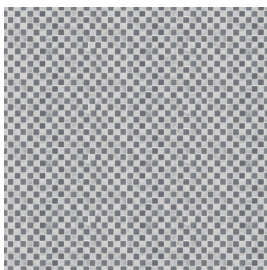
2cm x 4cm Basketweave
(Wickerweave)



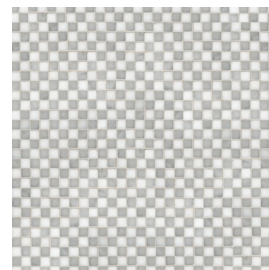
4.5cm x 9.5cm
Basketweave*



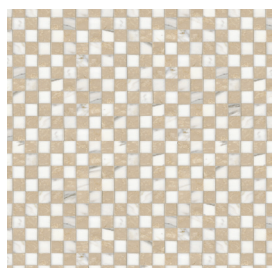
1cm Checked



1.5cm Checked



2cm Checked



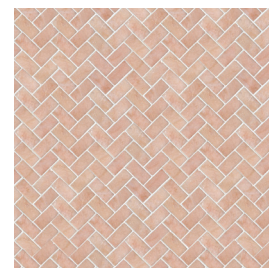
3cm Checked



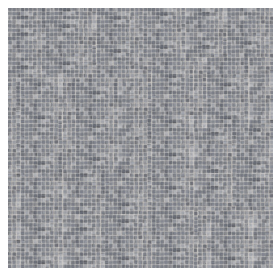
2cm Hand Clipped



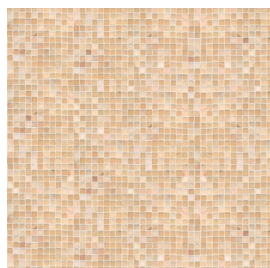
2cm x 4cm
Herringbone



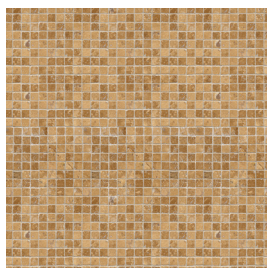
3cm x 6cm
Herringbone



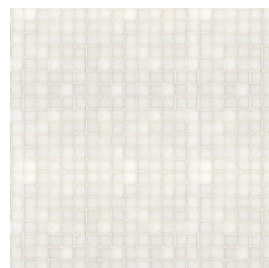
1cm Stacked



1.5cm Stacked



2cm Stacked



3cm Stacked

* NOT TO SCALE



ESTB. 1978

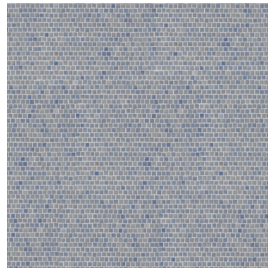
WATERWORKS

Parramore

STANDARD MOSAIC



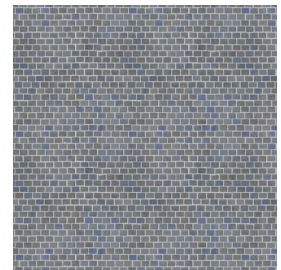
4cm Stacked



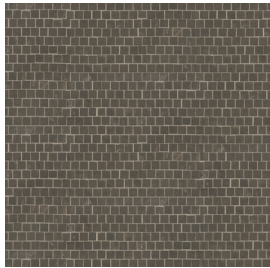
1cm Staggered



1.5 cm Staggered



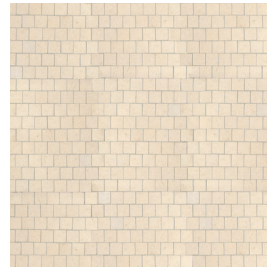
1.5cm x 2cm
Staggered



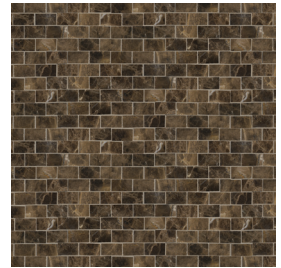
2cm Staggered



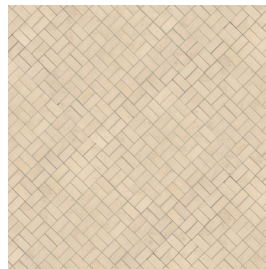
2cm x 4cm
Staggered



3cm Staggered



3cm x 5cm
Staggered



2cm x 4cm Twill

* NOT TO SCALE

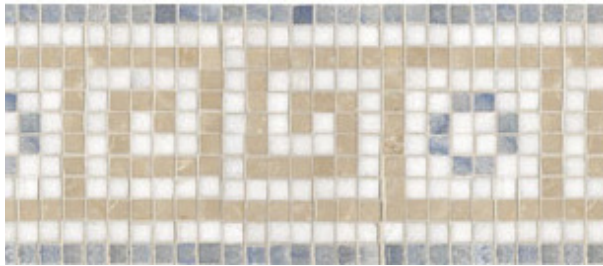


ESTB. 1978

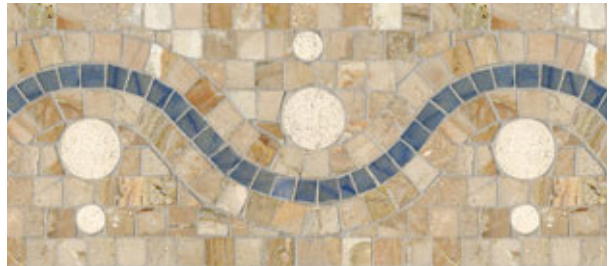
WATERWORKS

Parramore

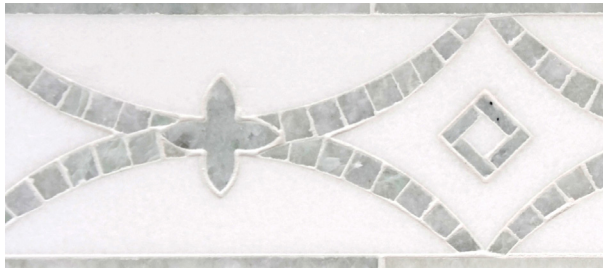
BORDER



Amaze Key



Babette's Beads



Beatrice



Beni



Basketweave



Colorforms



Charlemagne



Copley

* NOT TO SCALE



ESTB. 1978

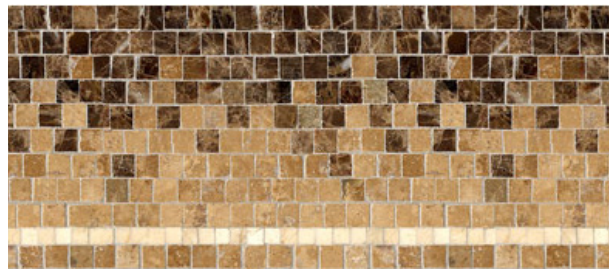
WATERWORKS

Parramore

BORDER



Chinoiserie



Fading Field



Furlong



Isabeau



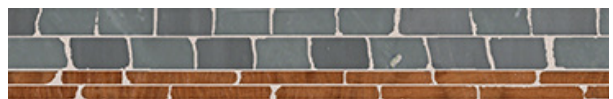
Jupiter



Lattice



Lara



Lila

* NOT TO SCALE



ESTB. 1978

WATERWORKS

Parramore

BORDER



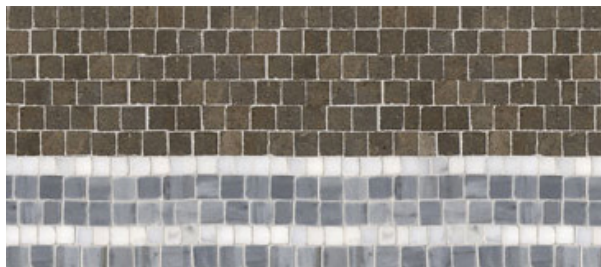
Marguerite Grande



Marguerite Petite



Meadowsuite



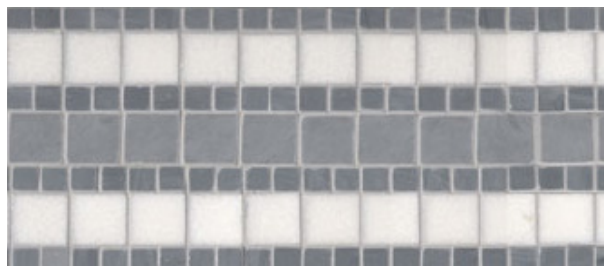
Monogram



Organic



Modified Palm Beach



Palm Beach



Paris Wave

* NOT TO SCALE



ESTB. 1978

WATERWORKS

Parramore

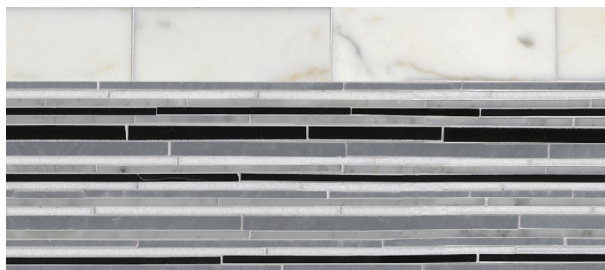
BORDER



Pegasus



Sarita



Simply Sticks



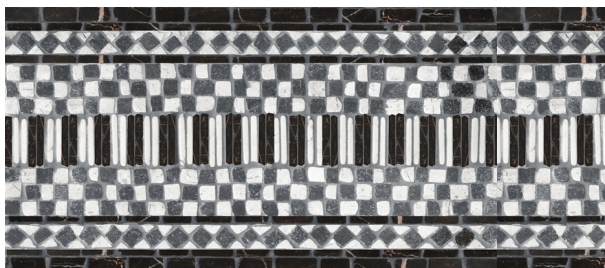
Sting/Paradiso



Swag



Swirl



Weft



Wyben

* NOT TO SCALE

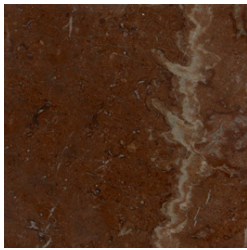


ESTB. 1978

WATERWORKS

Parramore

STONE PALETTE



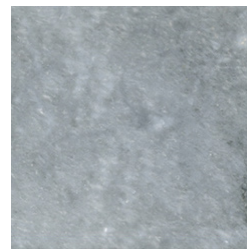
Aegean Brown V3



Afyon White V2



Alba Chiara V3



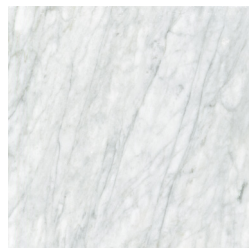
Allure V2



Angora V2



Arrowroot V2



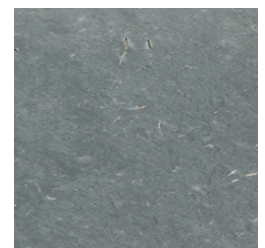
Avenza V3



Bardiglio Dark V3



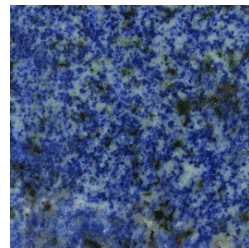
Bardiglio Light V3



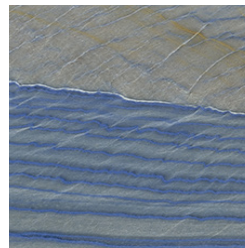
Bardiglio Medium V3



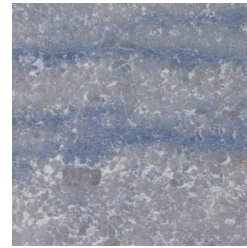
Bianco Antico V3



Blue Bahia V3



Blue Macauba V4



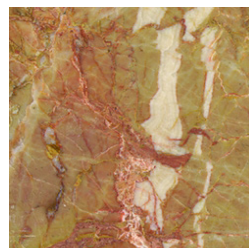
Blue Macauba Select V4



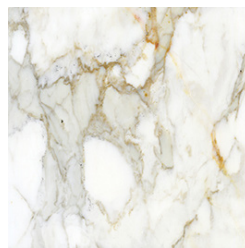
Botticino V2



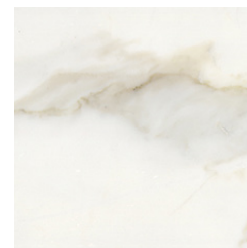
Breccia Oniciata V3



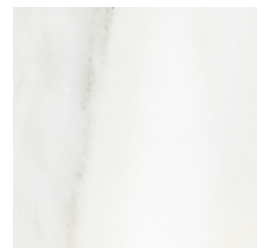
Breccia Pernice V4



Calacatta Baroque V2



Calacatta Gold V4



Calacatta Radiance V2

* See variation chart on page 19



ESTB. 1978

WATERWORKS

Parramore

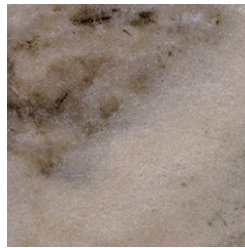
STONE PALETTE



Calacatta Tia V4



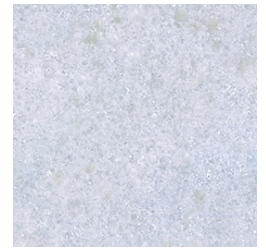
Carrara V3



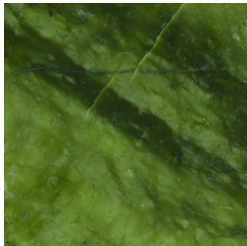
Cashmere V2



Cavern V2



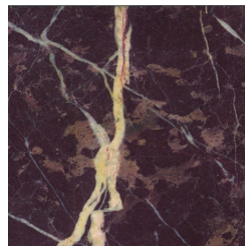
Celeste V3



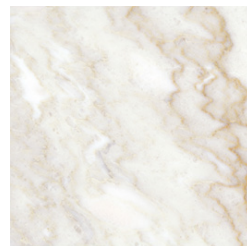
Chartreuse V3



Chinese Black V1



Chinese Purple V2



Cloud Nine V4



Crema Marfil V2



Crema Valencia V3



Desert Pink V3



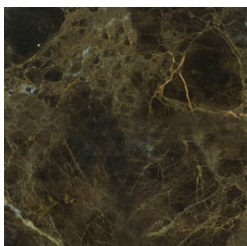
Dijon Gold V1



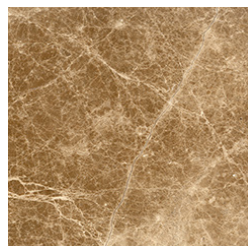
Durango V2



Driftwood V2



Emperador Dark V3



Emperador Light V3



Fontenay Claire V1



Gascogne Blue V2



Giallo Reale V3

* See variation chart on page 19

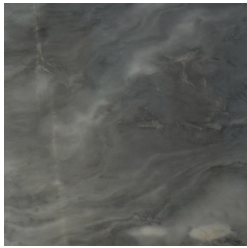


ESTB. 1978

WATERWORKS

Parramore

STONE PALETTE



Graystoke V4



Heavenly Cream V5



Honey Onyx V3



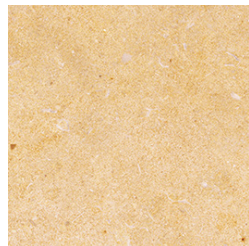
Horizon V2



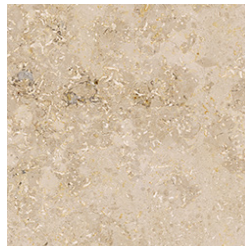
Imperial Danby V3



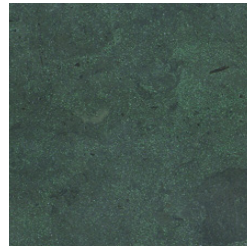
Ivory Cream V1



Jerusalem Gold V2



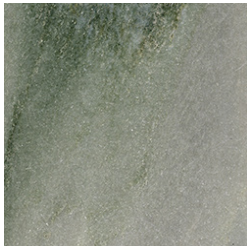
Jura Beige V2



Jura Green V1



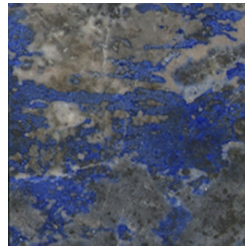
Jura Grey V2



Kay's Green V3



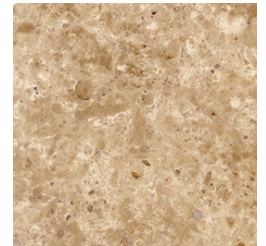
Lagos Gold V2



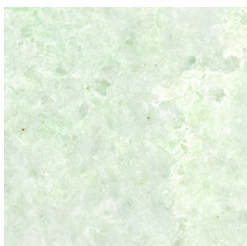
Lapis Azul V3



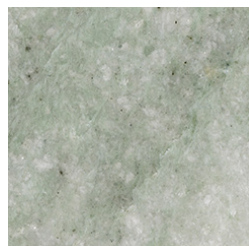
Lavendar Mist V4



Lavigne V4



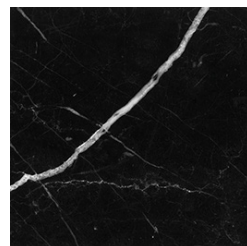
Lettuce Ming V2



Ming Green V3



Montevideo V3



Nero Marquina V3



Pacifica V4

* See variation chart on page 19



ESTB. 1978

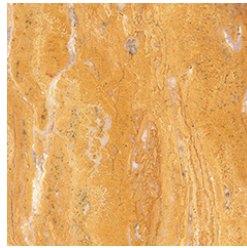
WATERWORKS

Parramore

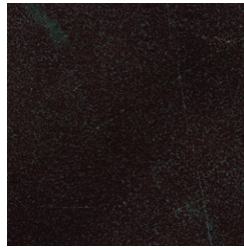
STONE PALETTE



Paperwhite V3



Persian Gold V2



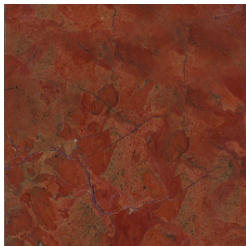
Red Lake V3



Red Travertine V2



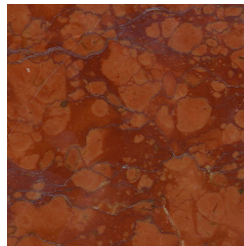
Renaissance Bronze V2



Rojo Alicante V2



Rosa Portugal V4



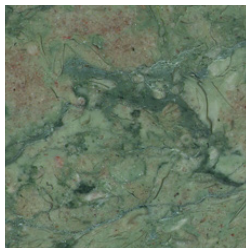
Rosa Verona V2



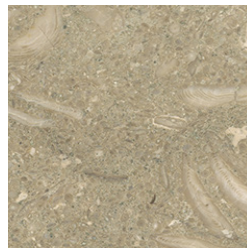
Saint Richard V1



Saint Vincent V1



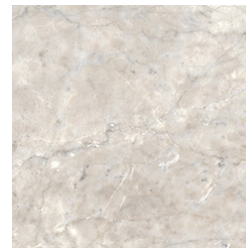
Salmon Moss V2



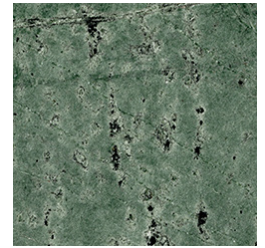
Seagrass V3



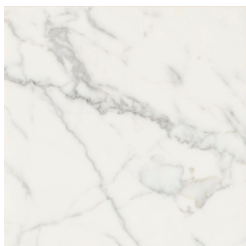
Snow White V2



Socorro Grey V2



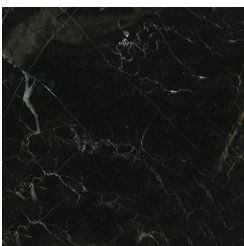
Spring Green V2



Statuary V4



Statuarietto V4



Saint Laurent V2



Sylvia Gold V2



Thassos V1

* See variation chart on page 19



ESTB. 1978

WATERWORKS

Parramore

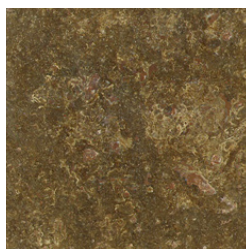
STONE PALETTE



Thassos Select V1



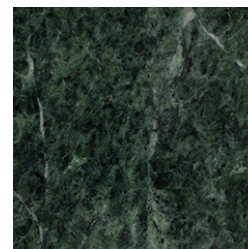
Topaz Onyx V2



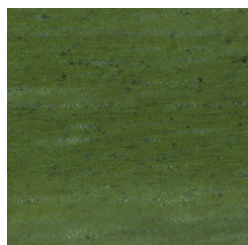
Travertine Noce V2



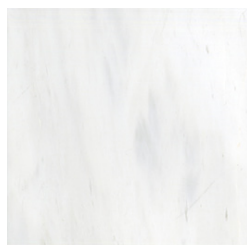
Travertine White V2



Verde Alpi V2



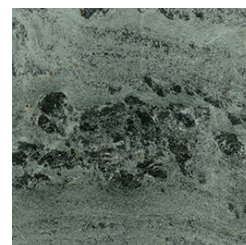
Verde Luna V3



White Dolomite V2



Whitewood V2



Wujan Jade V2

* See variation chart on page 19



ESTB. 1978

WATERWORKS

Parramore

GLASS/METAL PALETTE



Absolute White



Alabaster



Alexandrite



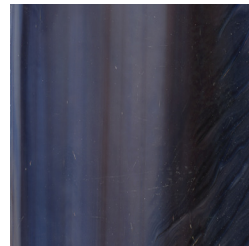
Aluminum



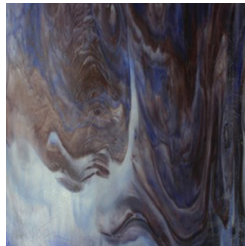
Amazonite



Amber



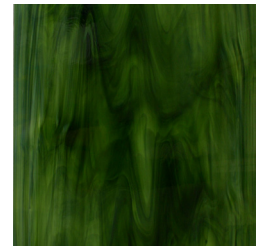
Amethyst



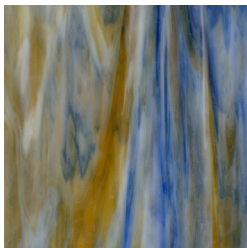
Ametrine



Aquamarine



Aventurine



Blue Onyx



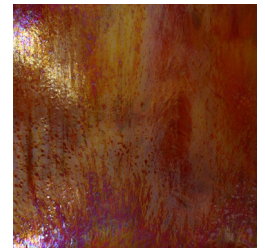
Blue Spinel



Brass



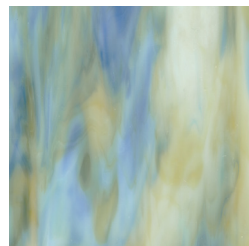
Carnelian



Carnelian (Back)



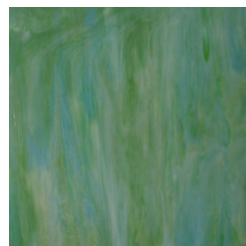
Cat's Eye



Chalcedony



Champagne



Chrysoberl



Chrysococalla

* See variation chart on page 19

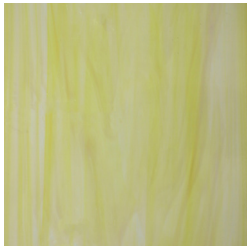


ESTB. 1978

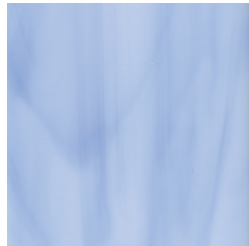
WATERWORKS

Parramore

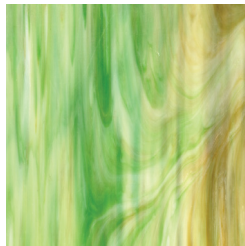
GLASS/METAL PALETTE



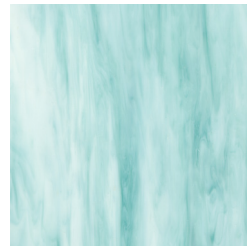
Citrine



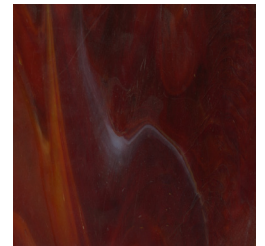
Covelite



Emerald



Feldspar



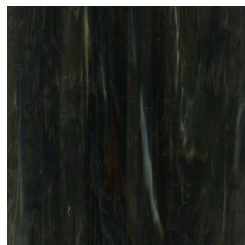
Garnet



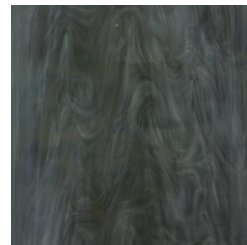
Iolite



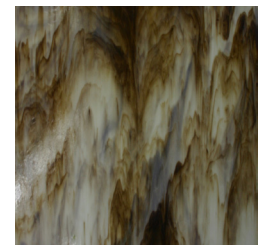
Jade



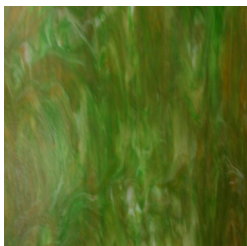
Jasper



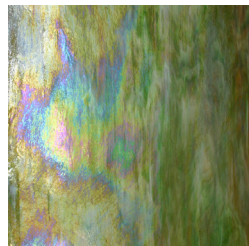
Labradorite



Lavastone



Malachite



Malachite (Back)



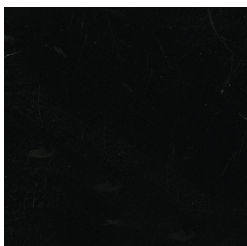
Marcasite



Mica



Moonstone



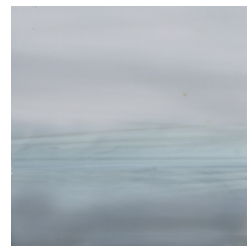
Obsidian



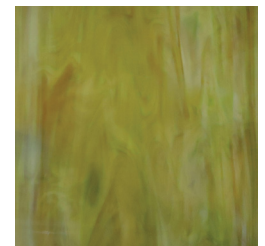
Opal



Peacock Topaz



Pearl



Peridot

* See variation chart on page 19



ESTB. 1978

WATERWORKS

Parramore

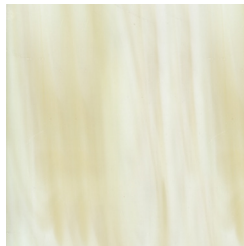
GLASS/METAL PALETTE



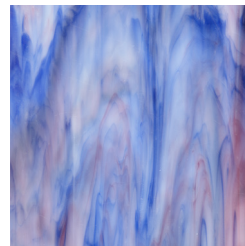
Pewter



Purple Spinel



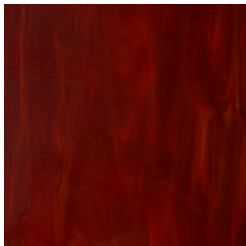
Quartz



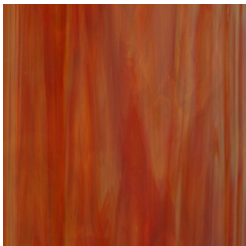
Rhodolite



Rose Quartz



Ruby



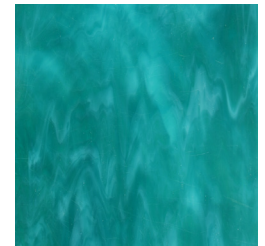
Sardonyx



Schist



Serpentine



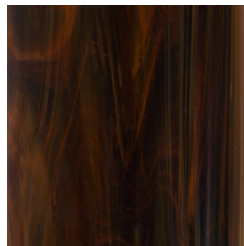
Tanzanite



Thassos White



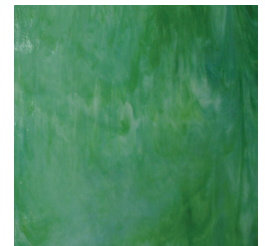
Tigers Eye



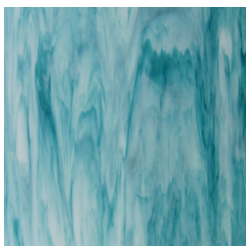
Tortoise Shell



Tourmaline



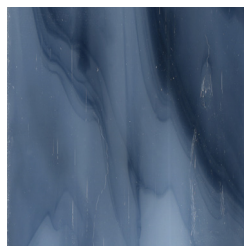
Tsavorite



Turquoise



Verdite



Zircon

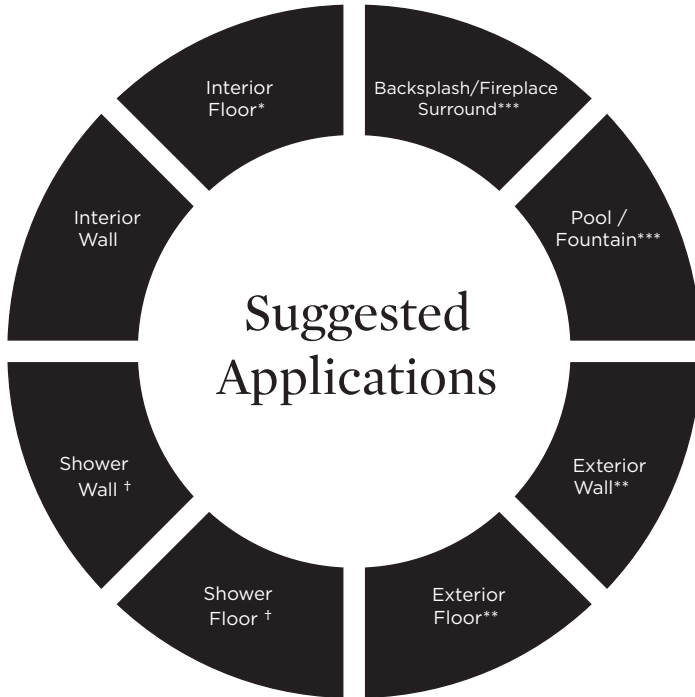
* See variation chart on page 19



ESTB. 1978

WATERWORKS

Parramore



Recommended Use



Not Recommended Use

Application Notes

* Traffic level varies based on materials. Stone is suitable for high traffic. Metal can ONLY be used in small format and will scratch and patina over time.

** Suitable for tropical/subtropical climates ONLY (if properly installed, sealed, and maintained). Metal CANNOT be used for exterior or pools/fountains.

† Suitable for use in wet environment if properly installed, sealed, and maintained. Various stones NOT suitable for wet environments. Please inquire. Metal NOT suitable for submerged application. Mirror glass CANNOT be used in wet application.

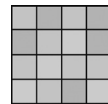
*** Tesserae no larger than 2"

Installation / Maintenance

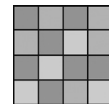
- WATERWORKS ASSUMES NO RESPONSIBILITY FOR INSTALLATION
- Installation constitutes acceptance.
- Mosaic should be installed by a licensed and experienced tile setter.
- Refer to TCNA (Tile Council of North America) or ANSI standards for installation guidelines.
- All mosaics must be inspected PRIOR to installation.
- Dry lay mosaics prior to installation to allow for blending of color variation.
- Waterworks recommends a grouted test panel prior to installation to understand final appearance of grouted materials
- Stone must be sealed before grout installation to allow grout to release and prevent staining.
- Stone and grout should be sealed after installation and maintained regularly.

Variation Level

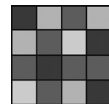
V1



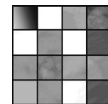
V2



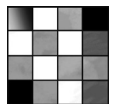
V3



V4



V5



1. MINIMAL, IF ANY COLOR VARIATION

2. SLIGHT COLOR VARIATION CAN BE EXPECTED

3. A MEDIUM RANGE OF COLOR VARIATION IS TYPICAL; DARKER AND LIGHTER TONES ARE EVIDENT

4. CONSIDERABLE COLOR VARIATION IS TYPICAL; FROM DARKS TO LIGHTS AND SOME TONE CHANGES

5. EXTREME COLOR VARIATION CAN BE EXPECTED - THE RANGE IS OFTEN DIFFERING BUT COMPLEMENTARY

Thickness



*Nominal: +/- 1/8"

Suggested Grout Lines

Varies-
Please follow
mosaic sheet