



ESTB. 1978

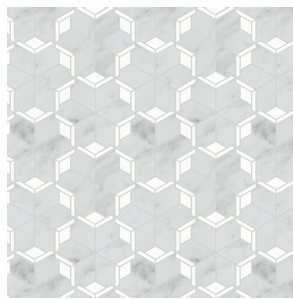
# WATERWORKS

## Studio Express

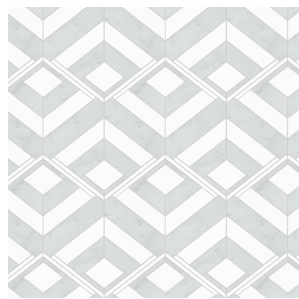
### MOSAIC



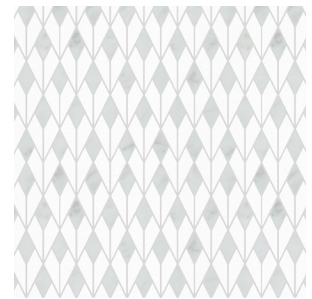
**SXMOAX** V3  
**Axel Mosaic**  
*White / Gray Polished*



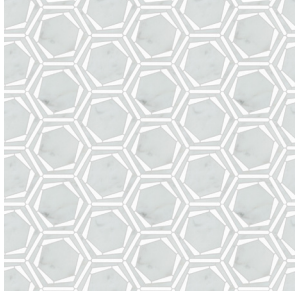
**SXMODI** V3  
**DiSxo Mosaic**  
*White / Gray Polished*



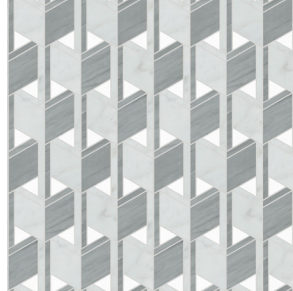
**SXMODO** V3  
**Domino Mosaic**  
*White / Gray Polished*



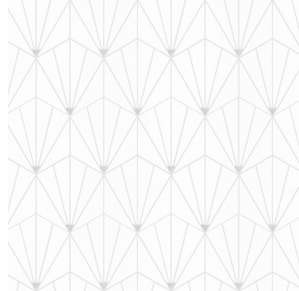
**SXMOHI** V3  
**Highland Mosaic**  
*White / Gray Polished*



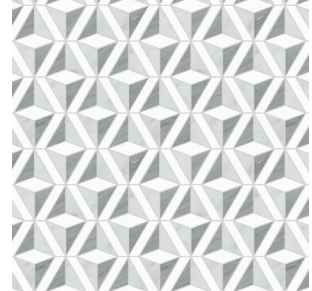
**SXMOIN** V3  
**Intrigue Mosaic**  
*White / Gray Polished*



**SXMOOP** V3  
**Opti Mosaic**  
*White / Gray / Dark Gray Polished*



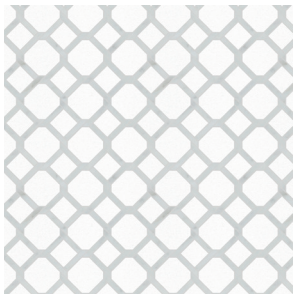
**SXMORO** V3  
**Roxy Mosaic**  
*White / Gray Polished*



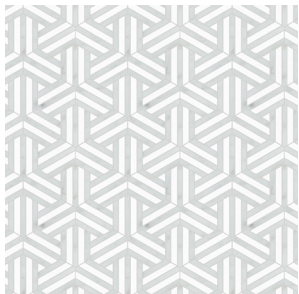
**SXMOTI** V3  
**Tripod Mosaic**  
*White / Gray / Dark Gray Polished*



**SXMOTR** V3  
**Tracery Mosaic**  
*White / Gray Polished*



**SXMOTW** V3  
**Twist 'em Mosaic**  
*White / Gray Polished*



**SXMOWI** V3  
**Wicker Mosaic**  
*White / Gray Polished*



**SXMOZZ** V3  
**Zig Zag Mosaic**  
*White / Gray Polished*

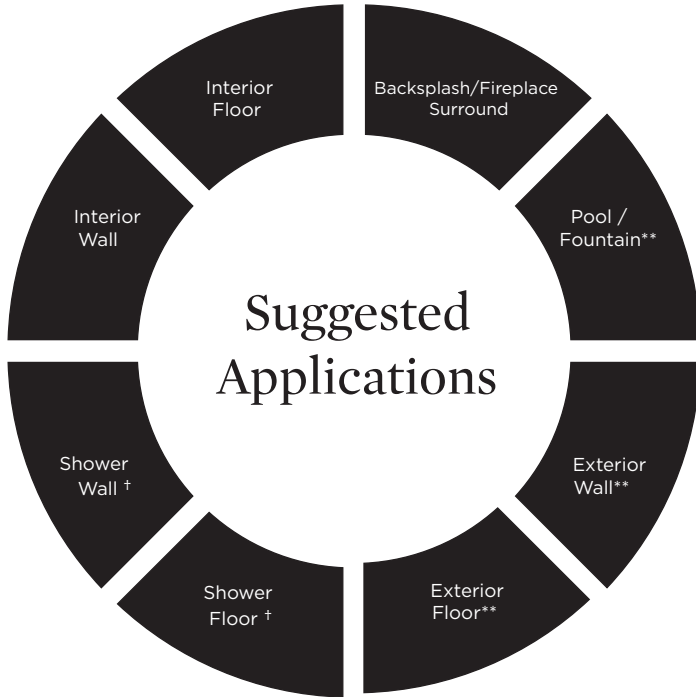
\*Available only in colorway shown. Polished finish only.



ESTB. 1978

# WATERWORKS

## Studio Express



### Variation Level

V1	V2	V3	V4	V5

1. MINIMAL, IF ANY COLOR VARIATION
2. SLIGHT COLOR VARIATION CAN BE EXPECTED
3. A MEDIUM RANGE OF COLOR VARIATION IS TYPICAL; DARKER AND LIGHTER TONES ARE EVIDENT
4. CONSIDERABLE COLOR VARIATION IS TYPICAL; FROM DARKS TO LIGHTS AND SOME TONE CHANGES
5. EXTREME COLOR VARIATION CAN BE EXPECTED - THE RANGE IS OFTEN DIFFERING BUT COMPLEMENTARY

### Application Notes

- \*\* Some stones are suitable for tropical/subtropical climates (if properly installed, sealed, and maintained). Testing may be required. Please inquire.
- † Suitable for use in wet environments, including steam showers, if properly installed, sealed, and maintained. Various stones NOT suitable for wet environments. Please inquire.

### Thickness

$\frac{3}{8}$ "\*

\*Nominal: +/-  $\frac{1}{8}$ "

### Suggested Grout Lines

$\frac{1}{16}$ " -  $\frac{1}{8}$ "

### Installation / Maintenance

- WATERWORKS ASSUMES NO RESPONSIBILITY FOR INSTALLATION
- Installation constitutes acceptance.
- Mosaic should be installed by a licensed and experienced tile setter.
- Refer to TCNA (Tile Council of North America) or ANSI standards for installation guidelines.
- All mosaics must be inspected PRIOR to installation.
- Dry lay mosaics prior to installation to allow for blending of color variation.
- Stone must be sealed before grout installation to allow grout to release and prevent staining.
- Waterworks recommends a grouted test panel prior to installation to understand final appearance of grouted materials
- Stone and grout should be sealed after installation and maintained regularly.