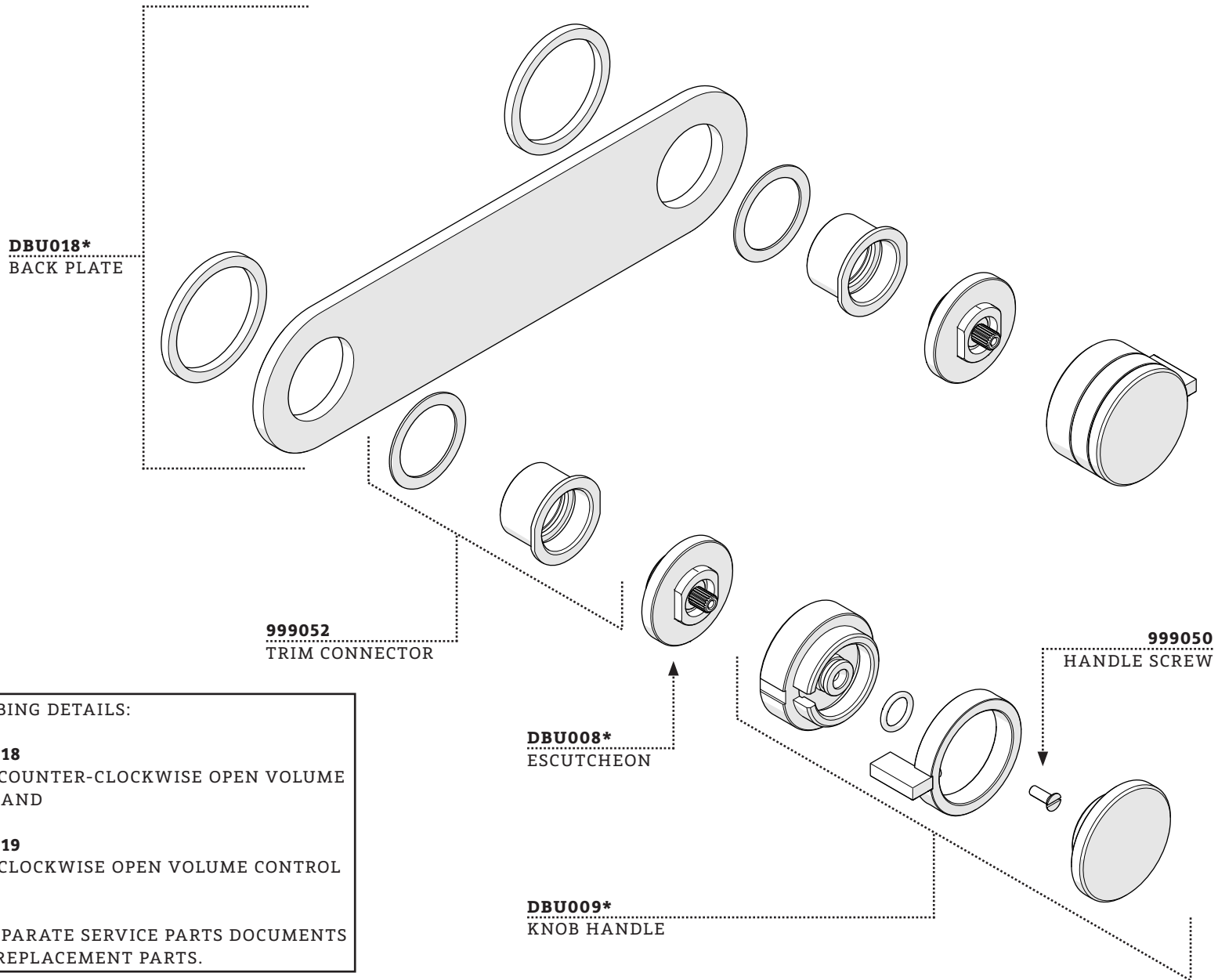


SERVICE PARTS



REQUIRED PLUMBING DETAILS:

STYLE NO. GUV C18
UNIVERSAL 1/2" COUNTER-CLOCKWISE OPEN VOLUME CONTROL VALVE AND

STYLE NO. GUV C19
UNIVERSAL 1/2" CLOCKWISE OPEN VOLUME CONTROL VALVE

REFER TO THE SEPARATE SERVICE PARTS DOCUMENTS FOR AVAILABLE REPLACEMENT PARTS.