

OLIVER

Oliver 4" Walnut Pull

OVHW04



SHOWN IN OLIVER 6" WALNUT PULL| OVHW06

TECHNICAL DETAILS

Height: 3/4"
Length: 4 15/16"

INSPIRATION

The beauty of hardware details on vintage trunks-metal corners, strips of wood, nail heads, leather trim-inspired the decorative elements of Oliver's drawer handle.

PRODUCT FEATURES

American Walnut paired with Brass

Walnut is protected with primer and wood lacquer

Includes per fixing: 8-32 Truss Head Machine Screw-Combo-Slotted



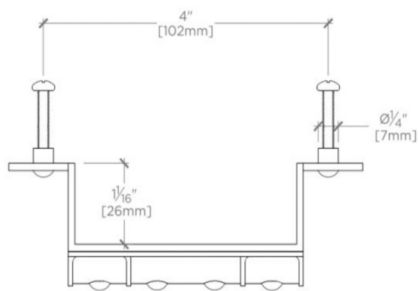
WATERWORKS

OLIVER

Oliver 4" Walnut Pull

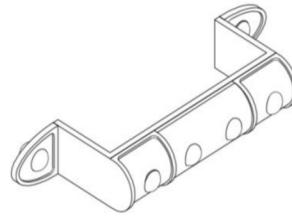
OVHW04

MOUNTING HARDWARE INCLUDED		
STYLE #	DESCRIPTION	QTY
998945	Service Parts 8-32 1" Truss Head Machine Screw, Combo, Slotted	2
998946	Service Parts 8-32 1/2" Truss Head Machine Screw, Combo, Slotted	2



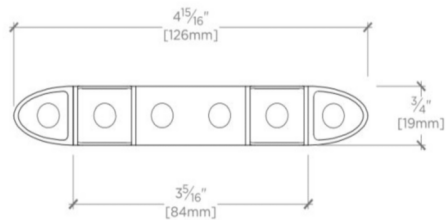
TOP VIEW

SCALE: 6"=1'-0"



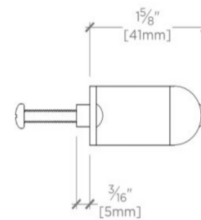
ISO VIEW

SCALE: 6"=1'-0"



FRONT VIEW

SCALE: 6"=1'-0"



SIDE VIEW

SCALE: 6"=1'-0"