

OPUS

OPVN02

Opus Double Wood Vanity 52 1/2" x 21" x 34 3/4" with Corian Top and Saxby Sinks



TECHNICAL DETAILS

Fitting Hole Configuration / Number: 2 pairs of 3 fittings holes drilled, centered behind each sink
Hardware Primary Material: Brass
Hardware Shape: Pull
Hinge Primary Material: Brass
Depth / Width: 533 mm
Height: 883 mm
Installation Type: Freestanding
Leg Material: Wood
Length: 1334 mm
Number of Holes: Six Hole
Number of Legs: Zero
Outer Rim Shape: Rectangular
Primary Material: Wood / Corian
Rough-in Supply Height Recommended: 584 mm
Rough-in Waste Height Recommended: 533 mm
Sink Visibility: N
Storage Type: Cabinet
Suggested Application: Bath

INSPIRATION

Opus incorporates a range of sophisticated aesthetic notes, with graceful curves that create a jewel-like refinement.

CODES & STANDARDS

Code # OPWS02:

PRODUCT FEATURES

The Opus Double Vanity is both practical and modern.

Includes two SALV24 sinks with 3-hole cutouts in a Glacier White Corian top.

Deep exposed shelf for storage.

Offered finished in White or Oak with Satin Nickel/Black drawer pulls.

Corian top can be custom ordered with single-hole cutout or with no holes for use with wall-mounted Fittings.

PRODUCT (NOTES)

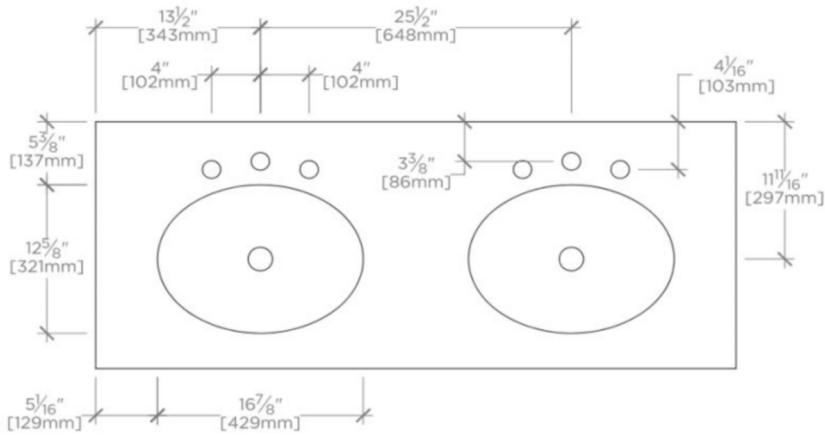
The Opus vanity includes lavatory and Corian[®] top

WATERWORKS

OPUS

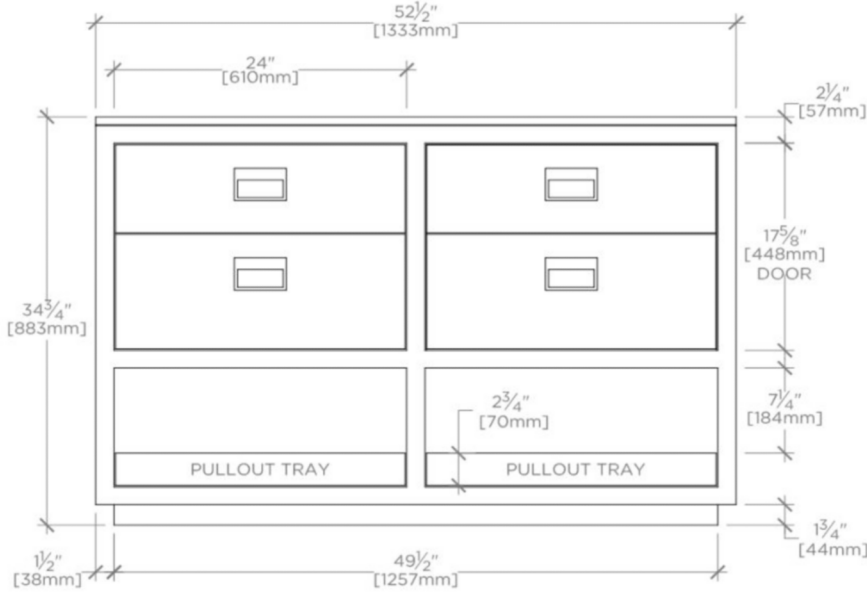
OPVN02

Opus Double Wood Vanity 52 1/2" x 21" x 34 3/4" with Corian Top and Saxby Sinks



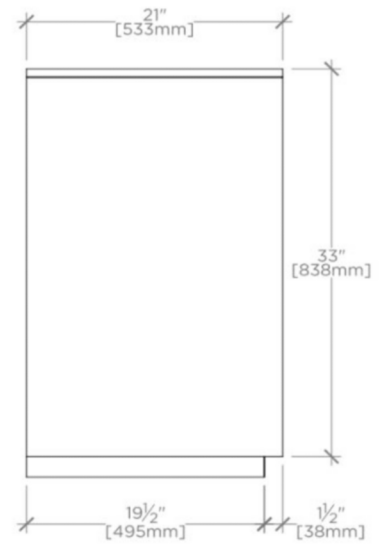
TOP VIEW

SCALE: 3/4"=1'-0"



FRONT VIEW

SCALE: 3/4"=1'-0"



SIDE VIEW

SCALE: 3/4"=1'-0"