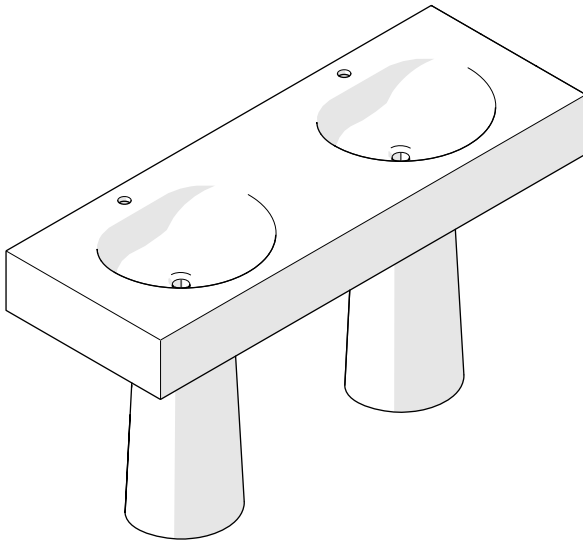
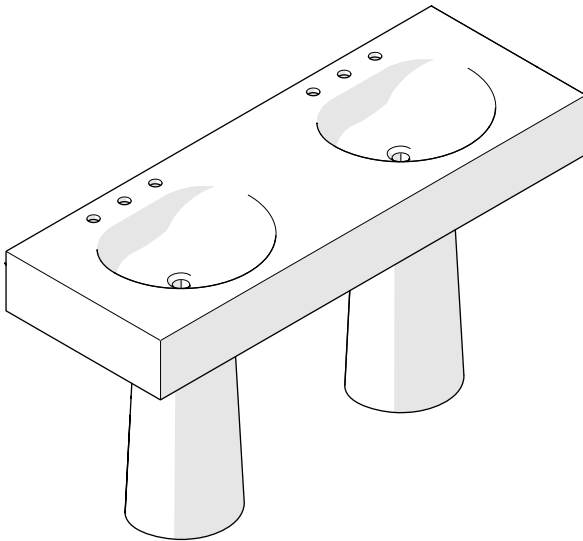


## Installation Guidelines

**STYLE No.** FMPL21 (For One Hole Faucets)



**STYLE No.** FMPL23 (For Three Hole Faucets)



**SPECIFICATIONS:**

Assembly / Configuration: Three Piece

Drain Hole Depth: 2" [51mm]

Drain Hole Diameter: 1 3/4" [44mm]

Fittings Hole Depth: 5/8" [16mm]

Fittings Hole Diameter: 1 3/8" [35mm]

Depth / Width: 22 1/2" [572mm]

Height: 34" [864mm]

Length: 62" [1575mm]

Overflow Opening: Yes

Rough-in Supply Height Recommended: 21" [533mm]

Rough-in Waste Height Recommended: 19" [483mm]

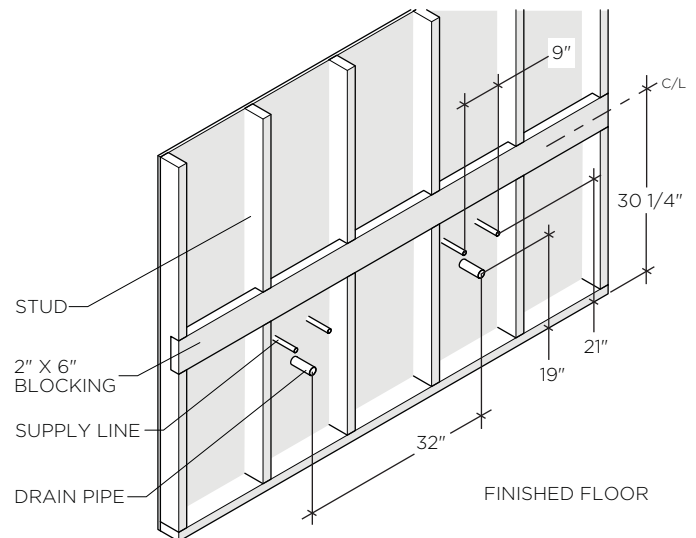
**IMPORTANT:**

- To ensure this product is installed properly, you must read and follow these guidelines.

- The owner/user of this product must keep this information for future reference.
- This product must be installed by a professional licensed contractor. Be sure your installation conforms to all federal, state, and local codes.
- This product must be on-site prior to rough-in. This allows the installer to visualize the installation and verify dimensions.
- Adequate blocking behind the finished wall to secure the sink is required.
- Inspect the product to ensure you have all the parts required for proper installation.
- The use of certain plumber's putty may stain stone or tile surfaces.

**ROUGH-IN:**

- See Figure - 01 for Steps 01 - 03.



**FIGURE - 01**

1. Install the water supply lines at the recommended height of 21" from the finished floor.

**NOTE:** The fitting holes for each bowl on the FMPL23 have a 9" spread. Place the supply lines of each bowl 9" apart for an easier installation.

2. Install the drain pipes at the recommended height of 19" from the finished floor.

**NOTE:** The drain holes on the FMPL23 have a 32" spread. Place the drain pipes 32" apart for an easier installation.

3. Install a piece of 2" x 6" wood to serve as blocking material to support the sink. It should be a minimum of 81-1/2" in length, depending on the distance between studs. The centerline of the blocking should be 30 1/4" from the finished floor.

These guidelines have been prepared for the professional contractor to aid in the installation of:  
**FORMWORK LITHIC DOUBLE PEDESTAL SINK FOR ONE HOLE FAUCETS (STYLE No. FMPL21) AND THREE HOLE FAUCETS (STYLE No. FMPL23) 62" x 22 1/2" x 34".**

FAUCETS (STYLE NO. FMPL25) 62" x 22 1/2" x 34".  
All dimensions are based on original specification and are subject to change and variation.  
Please consult your Design Associate for current specifications.

WATERWORKS

4. Install the finished wall and supply valves (not supplied).

**IMPORTANT:** Ensure the supply valves do not project more than 6 1/2" from the finished wall when open.

#### INSTALLATION:

5. Place the PEDESTALS on the finished floor so that they are:

- 32" apart on-center,
- Align with the drain pipes,
- The openings are towards the finished wall, and
- The back of each PEDESTAL is 6 1/2" from the finished wall.

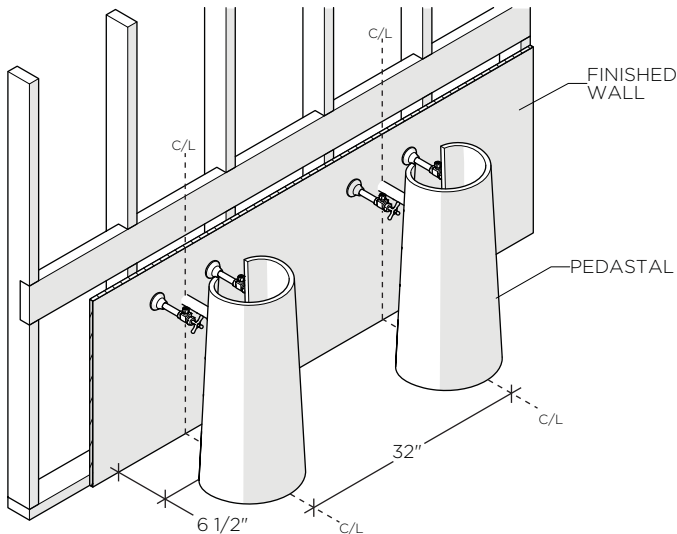


FIGURE - 02

6. Ensure that the supply valves (not supplied) are able to fully open and do not contact the PEDESTALS.
7. Dry fit the SINK onto the PEDESTALS making sure the SINK is level, makes contact with the finished wall, and does not rock or wobble. If needed, adjust the PEDESTALS and/or add shims (not included) between the SINK and PEDESTALS.
8. Mark the location of the mounting holes on the SINK as shown below.

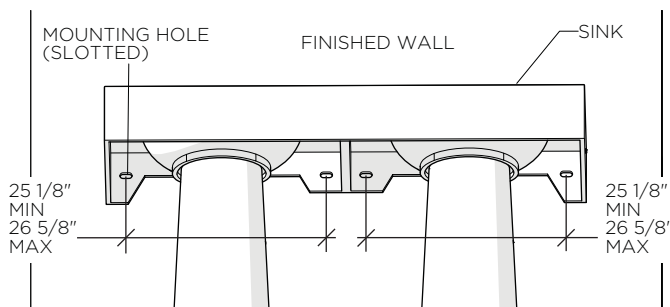


FIGURE - 03

9. Move the SINK and PEDESTALS then install the HANGER BOLTS provided using the marks made in the previous step. The BOLTS should project 2 1/4" from the finished wall as shown below.

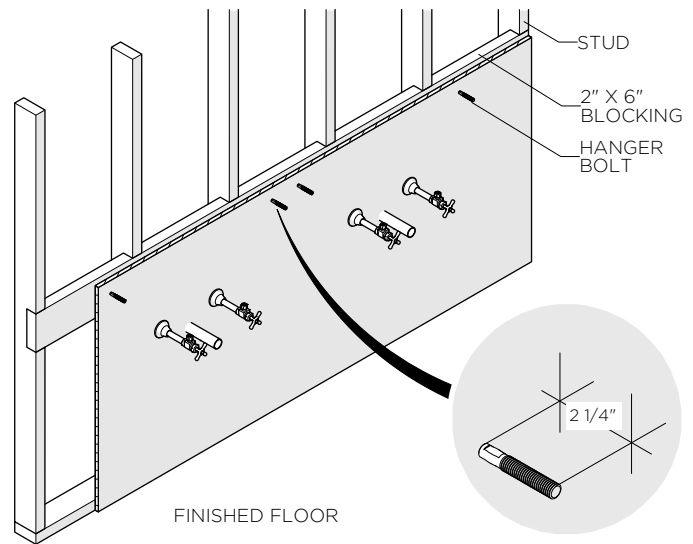


FIGURE - 04

10. Place the PEDESTALS back into position making sure they are:
- 32" apart on-center,
  - Align with the drain pipes,
  - The openings are towards the finished wall, and
  - The back of each PEDESTAL is 6 1/2" from the finished wall.
11. Install the drain and faucet fittings (not supplied) onto the SINK based on the manufacturer's instructions.
- NOTE:** The use of certain plumber's putty may stain stone or tile surfaces.
12. Fit the SINK onto the PEDESTALS making sure the HANGER BOLTS pass through the holes on the back of the SINK.
13. Make sure the SINK is level, makes contact with the finished wall, and does not rock or wobble. If needed, adjust the PEDESTALS and/or add shims (not included).
14. Secure the SINK to the finished wall using the PLASTIC WASHERS and NUTS provided as shown in Figure - 05. Do NOT over-tighten the nuts.

These guidelines have been prepared for the professional contractor to aid in the installation of:  
 FORMWORK LITHIC DOUBLE PEDESTAL SINK FOR ONE HOLE FAUCETS (STYLE No. FMPL21) AND THREE HOLE  
 FAUCETS (STYLE No. FMPL23) 62" x 22 1/2" x 34".  
 All dimensions are based on original specification and are subject to change and variation.  
 Please consult your Design Associate for current specifications.

W A T E R W O R K S

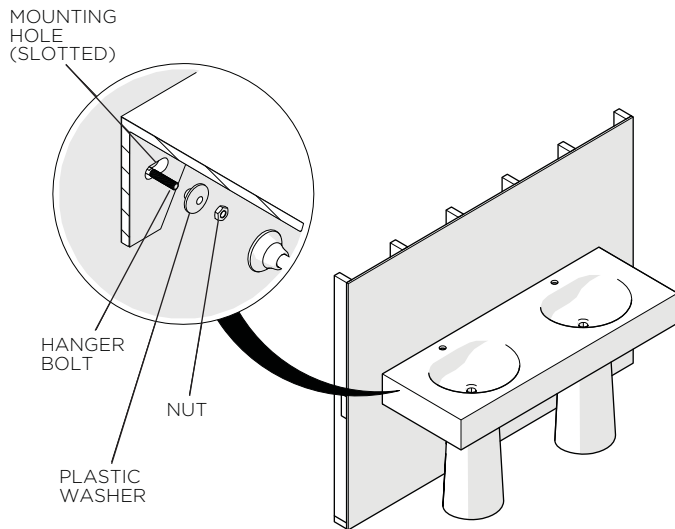


FIGURE - 05

**FINISH THE INSTALLATION:**

15. Make final faucet and drain connections.

**NOTE:** The use of certain plumber's putty may stain stone or tile surfaces.

16. Turn on the water and operate the drain and faucet fittings (not supplied) to ensure proper operation.
  17. Check all connections for leaks.
  18. If desired, a bead of caulk or a clear silicone may be applied where the SINK contacts the finished wall.
- If further assistance is required, please contact Product Support at 1-800-927-2120 Monday through Friday, 8am - 7pm EST.

These guidelines have been prepared for the professional contractor to aid in the installation of:  
 FORMWORK LITHIC DOUBLE PEDESTAL SINK FOR ONE HOLE FAUCETS (STYLE No. FMPL21) AND THREE HOLE  
 FAUCETS (STYLE No. FMPL23) 62" x 22 1/2" x 34".  
 All dimensions are based on original specification and are subject to change and variation.  
 Please consult your Design Associate for current specifications.

W A T E R W O R K S