



ESTB. 1978

W A T E R W O R K S

Penny Tile



Penny Tile is a line with unique hydrophilic coating which provides wall and floor tiles with revolutionary properties. Selective range of unique color palette is available in both strong and soft color blends as well as white, black and cream.

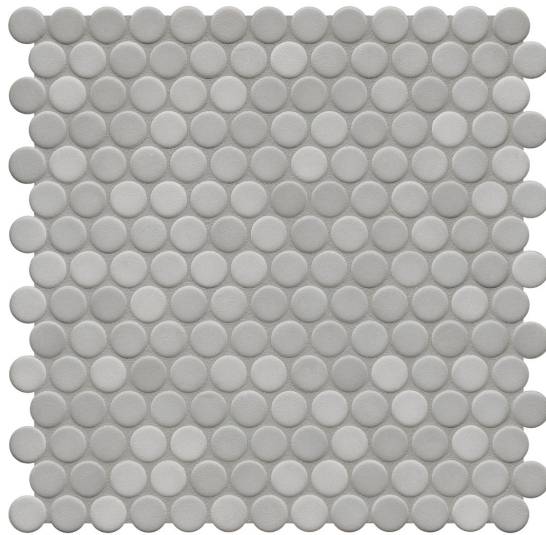


ESTB. 1978

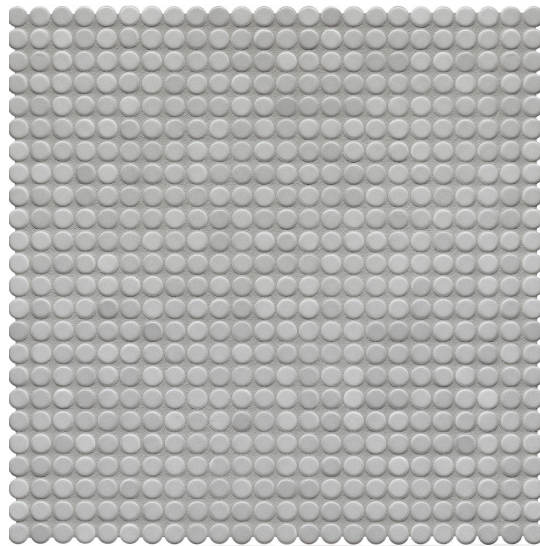
WATERWORKS

Penny Tile

MOSAIC



1" Penny Mosaic



1/2" Penny Mosaic



ESTB. 1978

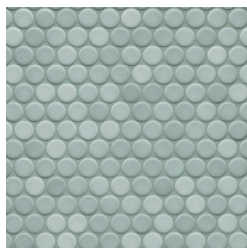
WATERWORKS

Penny Tile

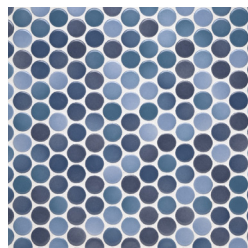
PALETTE



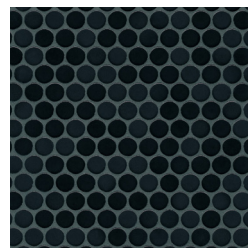
Alum (Glossy)*^o V3



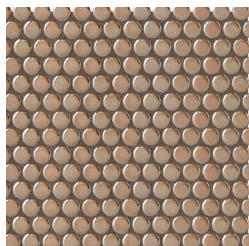
Armour (Glossy)* V2



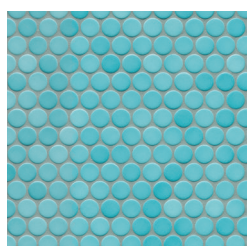
Atlantis (Glossy)*^o V3



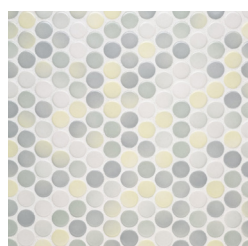
Black (Glossy)* V1



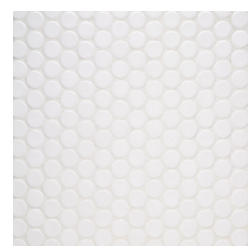
Bronca (Glossy) V2



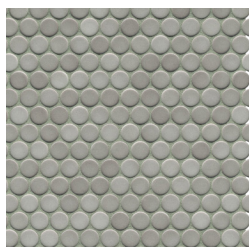
Gulf (Glossy)* V2



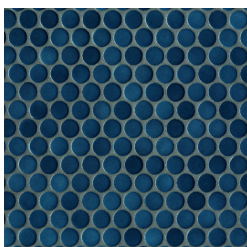
Haze (Glossy)*^o V3



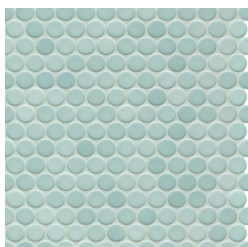
Iceberg (Glossy)* V1



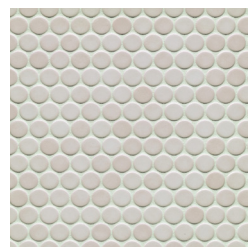
Latte (Glossy) V2



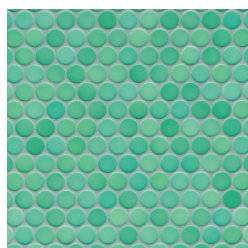
Nautilus (Glossy) V2



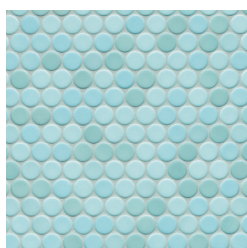
Pewter (Glossy) V2



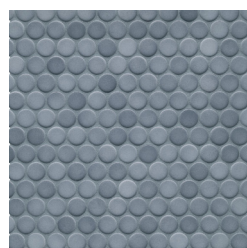
Sand (Glossy)* V2



Seafoam (Glossy) V2



Skye (Glossy)* V2



Smoke (Glossy) V2

* Available in matte
° Not available in 1/2"

See variation chart on page 5



ESTB. 1978

WATERWORKS

Penny Tile

Color Name	Availability			Floor Use Rating		
	.5 Diameter Glossy	1" Diameter Glossy	1" Diameter Matte **	.5 Diameter Glossy *	1" Diameter Glossy *	1" Diameter Matte * **
Alum		X	X		3	4
Armour	X	X	X	3	3	4
Atlantis		X	X		2	3
Black	X	X	X	2	2	2
Bronca	X	X		1	1	
Gulf	X	X	X	2	2	3
Haze		X	X		3	4
Iceberg	X	X	X	3	3	4
Latte	X	X		3	3	
Nautilus	X	X		2	2	
Pewter	X	X		3	3	
Sand	X	X	X	3	3	4
Seafoam	X	X		3	3	
Skye	X	X	X	3	3	4
Smoke	X	X		2	2	

*Floor Use Rating

1. Not Acceptable For Floor Use
2. Acceptable For Light Traffic Areas Such As Bathrooms
3. Acceptable For Medium Traffic Areas Such As Kitchens
4. Acceptable For High Traffic Areas Such As Hallways

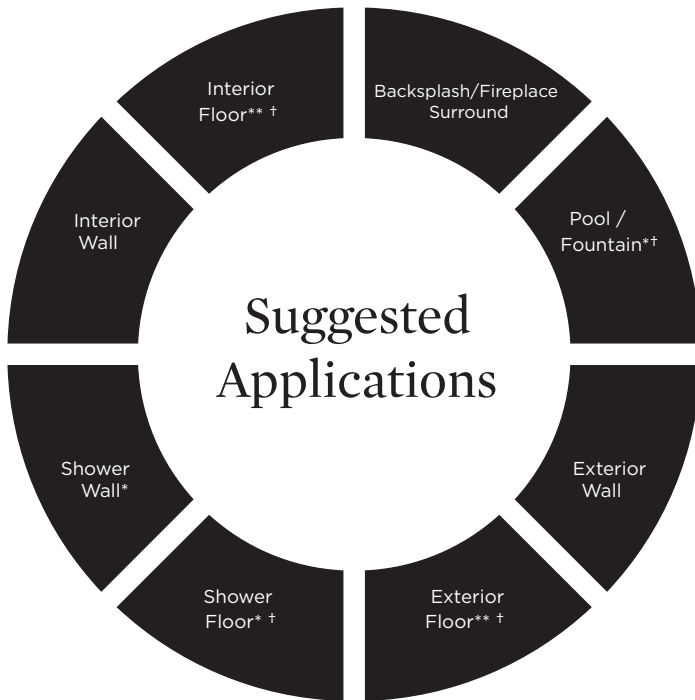
** Matte finish contains a non-slip finish (please refer to application and uses for floor use ratings)



ESTB. 1978

WATERWORKS

Penny Tile



Recommended Use



Not Recommended Use

Application Notes

* Suitable for use in wet environments, including steam showers, if properly installed, sealed, and maintained

** Floor application varies by size/color/ finish (see floor use rating chart). For commercial applications, please inquire.

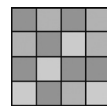
† Suitable for all colors EXCEPT Bronca

Variation Level

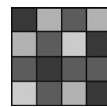
V1



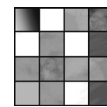
V2



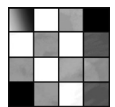
V3



V4



V5



1. MINIMAL, IF ANY COLOR VARIATION

2. SLIGHT COLOR VARIATION CAN BE EXPECTED

3. A MEDIUM RANGE OF COLOR VARIATION IS TYPICAL; DARKER AND LIGHTER TONES ARE EVIDENT

4. CONSIDERABLE COLOR VARIATION IS TYPICAL; FROM DARKS TO LIGHTS AND SOME TONE CHANGES

5. EXTREME COLOR VARIATION CAN BE EXPECTED - THE RANGE IS OFTEN DIFFERING BUT COMPLEMENTARY

Thickness



*Nominal: +/- 1/8"

Suggested Grout Lines

per mosaic sheet

Installation / Maintenance

- WATERWORKS ASSUMES NO RESPONSIBILITY FOR INSTALLATION
- Installation constitutes acceptance.
- Tile should be installed by a licensed and experienced tile setter.
- Refer to TCNA (Tile Council of North America) or ANSI standards for installation guidelines.
- All tile must be inspected PRIOR to installation.
- Dry lay tile prior to installation to allow for blending of color variation.
- Seal grout after installation and maintain regularly.