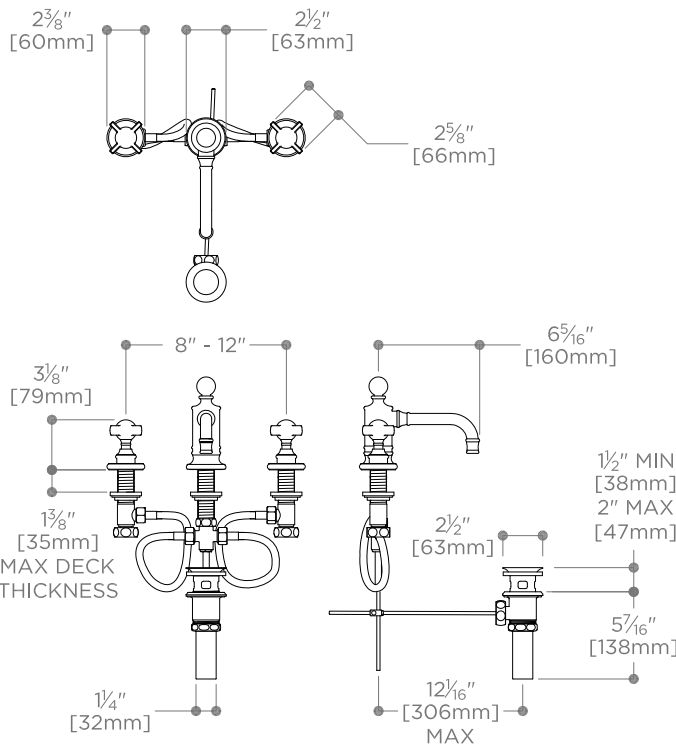


OMLS01**IMPORTANT:**

- To ensure this product is installed properly, you must read and follow these guidelines.
- The owner/user of this product must keep this information for future reference.
- Be sure your installation conforms to federal, state, and local codes.
- This product must be installed by a professional licensed contractor.
- Refer to the specification and assembly drawings attached. This product is sold partially assembled but shown fully disassembled for illustrative and service purposes only.
- Inspect this product to assure you have all parts required for proper installation.
- Use only a strap wrench or protected/smooth-jaw wrench on any finished surface.
- If possible, install this product assembly on the sink or mounting surface before setting.
- Do NOT use putty during this installation.

SIDE VALVE INSTALLATION:

1. Remove the handle assembly (1-6), the escutcheon (7), and the upper rubber washer (8) from the side valve. Do not remove the lower rubber washer (9) and locking nut (10).
2. Insert the side valve (12) into the hole in the mounting surface so at least 1/2" of the threads are exposed.
3. Place the upper rubber washer (8) onto the side valve and then thread the base escutcheon (7) onto the side valve.
4. Thread the handle assembly (1-6) onto the side valve until it stops. Hand tight is adequate; if this assembly is too tight, the handle will bind.
5. Unthread the base escutcheon until it contacts the gland cover (3) which will assure proper side valve height.
6. Tighten the locking nut up against the underside of the mounting surface to secure the side valve.
7. Repeat these steps to install the second side valve.
8. Connect the side valves (12) to the water supply valves (not supplied).

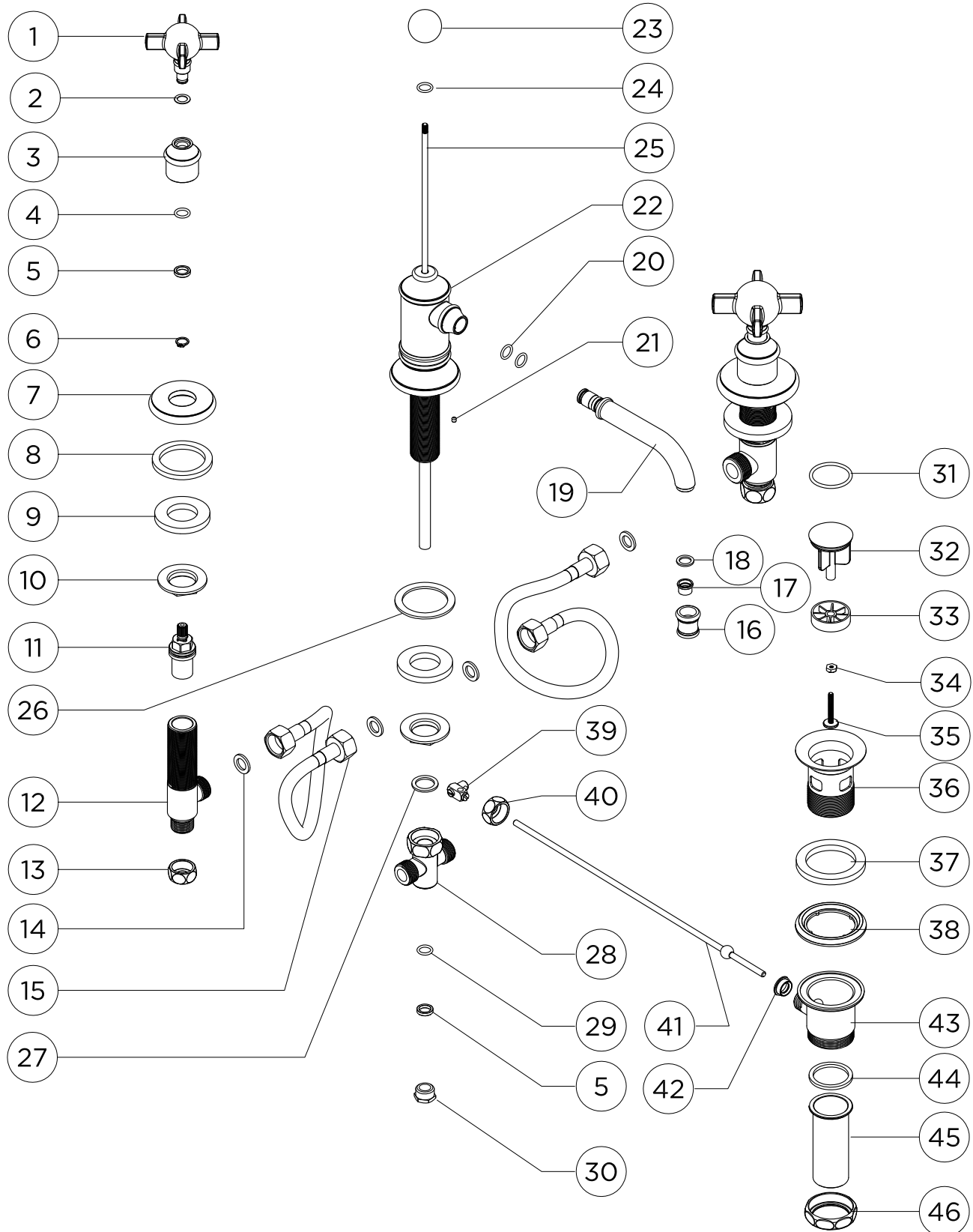
SPOUT INSTALLATION:

9. Pull off the lift rod assembly (23-25).
10. Loosen the packing nut (30) at the base of the tee, unthread the tee nut and remove the tee assembly (28), fiber washer (27), packing nut, metal washer (5) and o-ring (29) from the spout shank (22).
11. Unthread and remove the spout locking nut (10) and lower rubber washer (9) from the spout.
12. Insert the spout assembly (16-26) through the spout hole of the mounting surface. Making sure the upper rubber washer (26) is between the spout and mounting surface. Reinstall the lower rubber washer and then tighten the spout locking nut to secure the spout to the mounting surface.
13. Reattach the tee assembly using the fiber washer (27) followed by the o-ring, metal washer and packing nut separately. This will avoid damage to the o-ring on the guide tube. Make sure to tighten the packing nut (30) to prevent leaks.

These guidelines have been prepared for the professional contractor to aid in the installation of: **OLYMPIA LOW PROFILE THREE HOLE DECK MOUNTED LAVATORY FAUCET (OMLS01)**. All dimensions are based on original specification and are subject to change and variation. Please consult your Design Associate for current specifications.

WATERWORKS

Olympia Low Profile Three Hole Deck Mounted Lavatory Faucet	Installation Guidelines
<p>14.Connect each of the supply hoses (15) to the adjacent side valve, making sure the hoses are not pinched or kinked, and there is a fiber washer (14) at both connection points.</p> <p><u>DRAIN INSTALLATION:</u></p> <p>15.Remove the upper collar (36) from the pop-up drain assembly and discard the upper white foam washer (37).</p> <p>16.Set the upper collar in the lavatory drain opening using a clear adhesive silicone.</p> <p>17.Reattach the lower drain assembly (43) using the rubber gasket (38) provided and then tighten until fully secured. A clear adhesive silicone may be used to ensure a watertight seal between the gasket and lavatory.</p> <p>18.Remove the knurled nut (40) from the lower drain assembly and then insert the horizontal pivot rod (41) and reattach the knurled nut.</p> <p>19.Insert the vertical lift rod (25) into the spout and then connect the vertical lift rod to the horizontal pivot rod using the linkage (39) provided. Note that these rods may be field cut.</p> <p>20.Attach the drain pipe (45) using the nut (46) and washer (44) provided.</p> <p><u>INSPECT THE INSTALLATION:</u></p> <p>21.Unthread the aerator housing (16) from the spout to remove the aerator (17) then carefully open the hot and cold valves to flush out any debris in the supply lines.</p> <p>22.Inspect all connections for leaks.</p> <p>23.Close the drain and then fill the sink with water to make sure the drain stopper (32) operates and seals properly.</p> <p>24.To adjust the height of the drain stopper, turn the adjustment screw (35) at the base of the stopper and then tighten the locking nut (34) to secure.</p> <p>25.The linkage (39) position will effect drain stopper function, adjust as needed.</p> <p>26.Reinstall the aerator.</p> <p>➤ If further assistance is required, please contact Product Support at 1-800-927-2120 (8am-7pm EST).</p>	
<p>These guidelines have been prepared for the professional contractor to aid in the installation of: <u>OLYMPIA LOW PROFILE THREE HOLE DECK MOUNTED LAVATORY FAUCET (OMLS01)</u> All dimensions are based on original specification and are subject to change and variation. Please consult your Design Associate for current specifications.</p>	<p>WATERWORKS</p>



These guidelines have been prepared for the professional contractor to aid in the installation of: **OLYMPIA LOW PROFILE THREE HOLE DECK MOUNTED LAVATORY FAUCET (OMLS01)**. All dimensions are based on original specification and are subject to change and variation. Please consult your Design Associate for current specifications.

WATERWORKS

PART NUMBER	DESCRIPTION	QTY.
1	CROSS HANDLE, CONTROL VALVE, ASSEMBLY	2
2	WASHER, 9.8MM ID X 14.3MM OD X 0.5MM THICKNESS, PLASTIC	2
3	GLAND COVER, OLYMPIA	2
4	O-RING, 10MM ID X 2MM WIDTH, RUBBER	2
5	WASHER, 10.5MM ID X 14.5MM OD, 3MM THICKNESS, METAL	3
6	C-CLIP, 9.8MM ID X 12.4MM OD, 1.2MM THICKNESS, METAL	2
7	ESCUTCHEON, OLYMPIA	2
8	WASHER, 41MM ID X 53.5MM OD X 4.7MM THICKNESS, RUBBER	2
9	WASHER, 27.3MM ID X 49.5MM OD X 6MM THICKNESS, RUBBER	3
10	NUT, FLANGE, 30MM WRENCH, M20 X 7MM, METAL	3
11	CARTRIDGE, SHUT-OFF VALVE	2
12	VALVE BODY	2
13	NUT, COMPRESSION TUBE FITTING, 12MM ID	2
14	WASHER, 11.8MM ID X 18MM OD X 1.7MM THICKNESS, FIBER	4
15	1/2" SUPPLY HOSE	2
16	HOUSING, AERATOR	1
17	AERATOR, OLYMPIA	1
18	WASHER, 11MM ID X 15.3MM OD X 1.45MM THICKNESS, RUBBER	1
19	SPOUT, OLYMPIA	1
20	O-RING, 10MM ID X 2MM WIDTH, RUBBER	2
21	SET SCREW, 2MM HEX, M4X0.70MM, 4MM LENGTH	1
22	SPOUT, OLYMPIA	1
23	POP-UP KNOB	1
24	O-RING, 5MM ID X 2MM WIDTH, RUBBER	1
25	POP-UP ROD	1
26	WASHER, 40.8MM ID X 53.8MM OD X 2.3MM THICKNESS, RUBBER	1
27	WASHER, 17.5MM ID X 23.5MM OD X 1.75MM THICKNESS, FIBER	1
28	TEE, SPOUT	1
29	O-RING, 9.3MM ID X 2.5MM WIDTH, RUBBER	1
30	PACKING NUT, 17MM HEX	1
31	O-RING, 33MM ID X 3MM WIDTH, RUBBER	1
32	DRAIN STOPPER	1
33	DRAIN STRAINER	1
34	NUT, 9MM WRENCH, M5, METAL	1
35	SCREW, CHEESE HEAD, M4X0.70MM, 31.75MM LENGTH, METAL	1
36	UPPER DRAIN BODY	1
37	WASHER, 45MM ID X 62MM OD X 6MM THICKNESS, FOAM	1
38	GASKET, DRAIN SEAL, RUBBER	1
39	DRAIN ROD LINKAGE	1
40	NUT, COMPRESSION TUBE FITTING, 10.4MM ID	1
41	HORIZONTAL PIVOT ROD	1
42	DRAIN INSERT	1
43	LOWER DRAIN BODY	1
44	WASHER, 31.8MM ID X 39MM OD X 3MM THICKNESS, RUBBER	1
45	DRAIN PIPE	1
46	NUT, TAIL PIPE, METAL	1

These guidelines have been prepared for the professional contractor to aid in the installation of: **OLYMPIA LOW PROFILE THREE HOLE DECK MOUNTED LAVATORY FAUCET (OMLS01)**. All dimensions are based on original specification and are subject to change and variation. Please consult your Design Associate for current specifications.

WATERWORKS