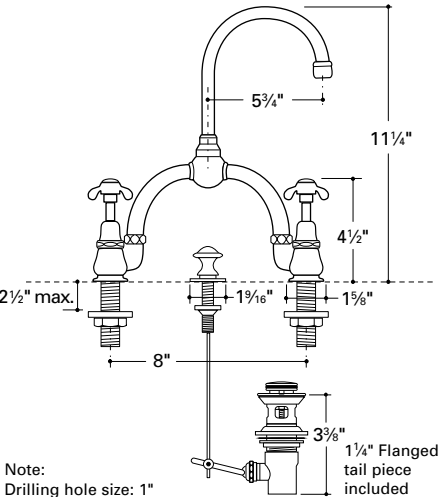


ETLS 82



INSTALLATION GUIDELINES

- Use only a protected, smooth-jawed, or strap wrench on any finished surface.
- DO NOT use putty on deck fittings. Upper and lower washers are provided.
- The arch should be positioned to the rear of the valve bodies (as shown in illustration).
- Be sure that the gaskets (provided) are used on the connections from the valve bodies to the spout.
- Upper waste assembly can be set with putty.
- Basin nuts are provided.
- Check for leaks.
- After installation, unscrew and remove the aerator assembly. Carefully open the hot and cold valves fully to flush out any debris in the supply lines. Once the lines have been flushed, close the valves and reinstall the aerator assembly.
- To service the valve stem: Unscrew the index assembly to expose the screw for the handle. The cover should be hand tight.
- If further assistance is required, please contact Product Support at 1-800-927-2120 (8am–7pm EST).