



ESTB. 1978

WATERWORKS

Parramore



Parramore mosaics offer options which echo the classical designs of a timeless art form. A fading field of pale shades adds depth, texture and subtle sophistication to the bath. A monogram border framing a grid of field tile instantly adds an air of refinement to a shower wall or floor.



ESTB. 1978

WATERWORKS

Parramore

DECORATIVE MOSAIC



Abrash



Abrash
Block



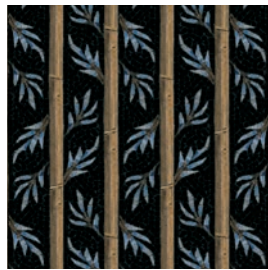
Adona



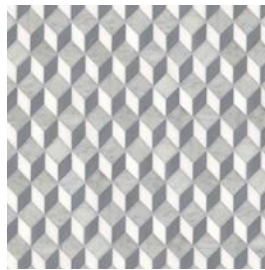
Aquarius



Aquarius with Stripe



Bamboo



Baby Blocks



Beni



Solid with Tesserae
Beatrice



Tesserae
Beatrice



Brocade



Colorforms



Charlemagne



Chopsticks



Clara



Drift

* NOT TO SCALE



ESTB. 1978

WATERWORKS

Parramore

DECORATIVE MOSAIC



Femi



Furlong



Harris Island



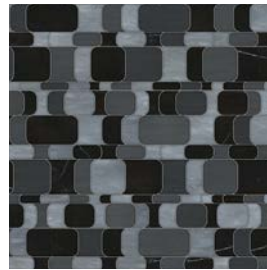
Ikat



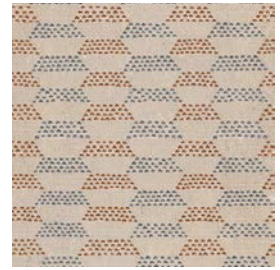
Key



Key Inlay



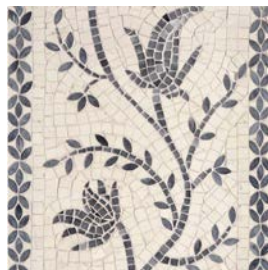
Lara



Lila



Lattice



Marguerite



Mondrian



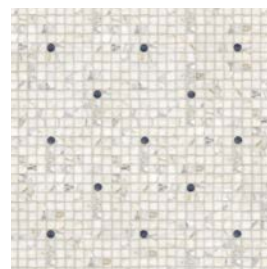
Origami



Oval Overlay



Pinwale



Polka Dot



Quilt Block

* NOT TO SCALE



ESTB. 1978

WATERWORKS

Parramore

DECORATIVE MOSAIC



Razmatazz



Rhombic All Over



Rhombic Blocks



River Run



Sine Wave



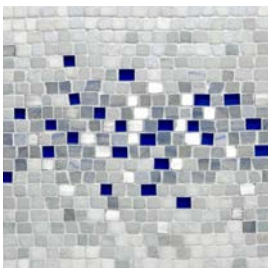
Scallop



Simply Sticks



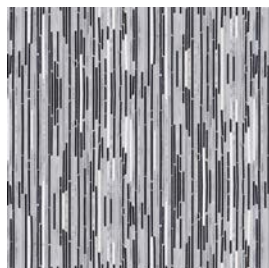
Stradavarius



Stratus



1cm Stalks



.5cm Tatami



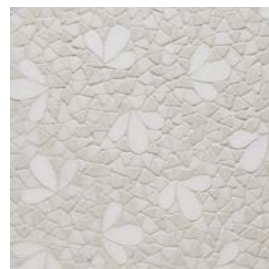
.5cm Tatami Blocks
Straight



.5cm Tatami Blocks
Diagonal



Theda



Tri-Petal

* NOT TO SCALE

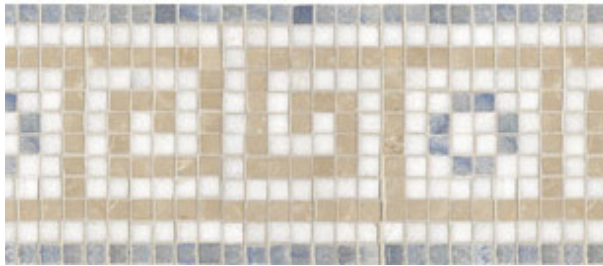


ESTB. 1978

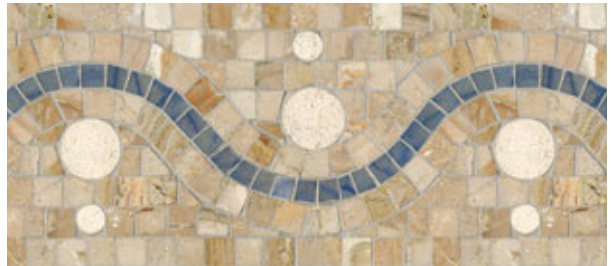
WATERWORKS

Parramore

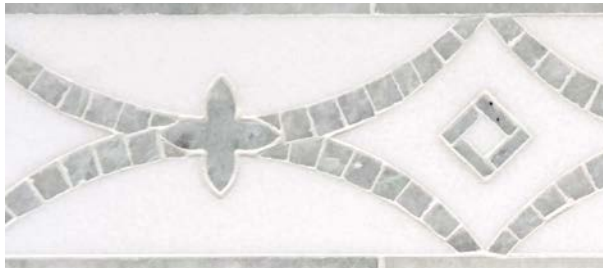
BORDER



Amaze Key



Babette's Beads



Beatrice



Beni



Basketweave



Colorforms



Charlemagne



Copley

* NOT TO SCALE



ESTB. 1978

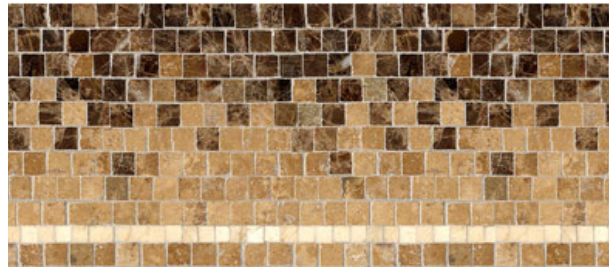
WATERWORKS

Parramore

BORDER



Chinoiserie



Fading Field



Furlong



Isabeau



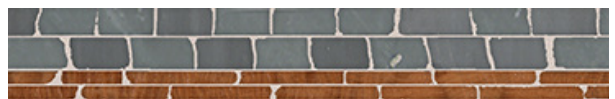
Jupiter



Lattice



Lara



Lila

* NOT TO SCALE



ESTB. 1978

WATERWORKS

Parramore

BORDER



Marguerite Grande



Marguerite Petite



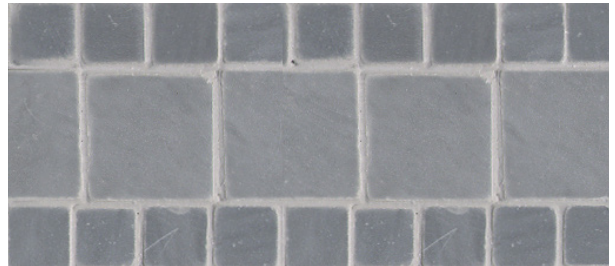
Meadowsuite



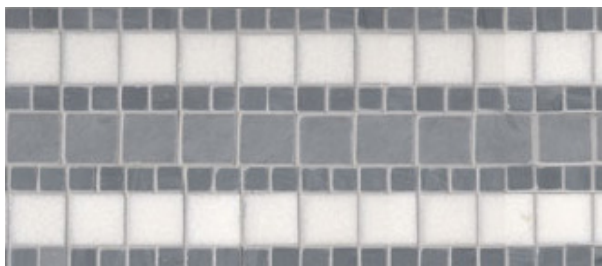
Monogram



Organic



Modified Palm Beach



Palm Beach



Paris Wave

* NOT TO SCALE



ESTB. 1978

WATERWORKS

Parramore

BORDER



Pegasus



Sarita



Simply Sticks



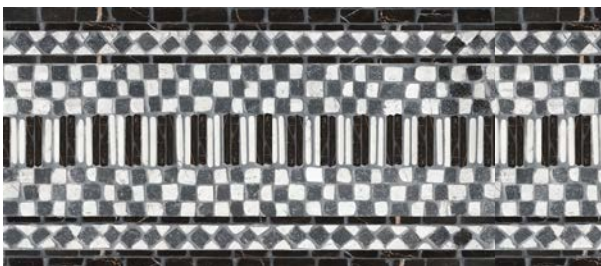
Sting/Paradiso



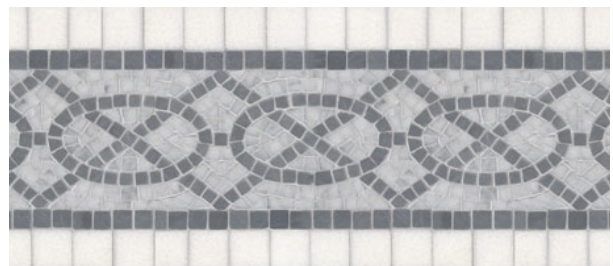
Swag



Swirl



Weft



Wyben

* NOT TO SCALE

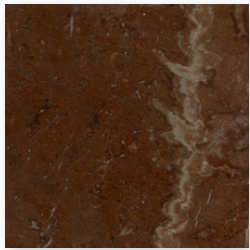


ESTB. 1978

WATERWORKS

Parramore

STONE PALETTE



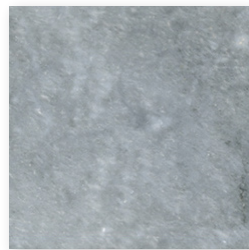
Aegean Brown V3



Afyon White V2



Alba Chiara V3



Allure V2



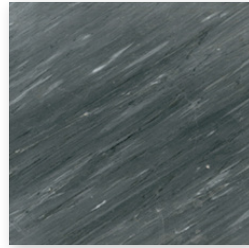
Argent Blue V4



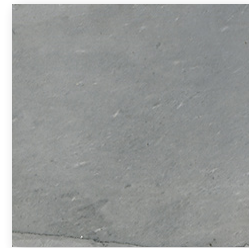
Angora V2



Arrowroot V2



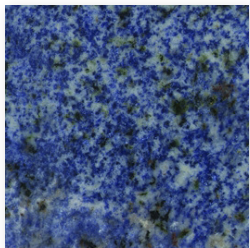
Bardiglio Dark V3



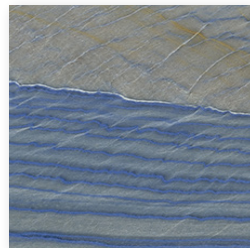
Bardiglio Light V3



Bianco Antico V3



Blue Bahia V3



Blue Macauba V4



Blue Macauba Select V4



Botticino V2



Breccia Oniciata V3



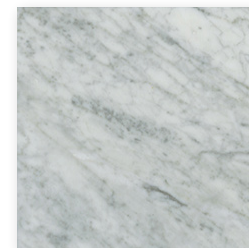
Calacatta Gold V4



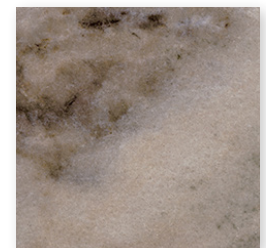
Calacatta Radiance V2



Calacatta Tia V4



Carrara V3



Cashmere V2

* See variation chart on page 19

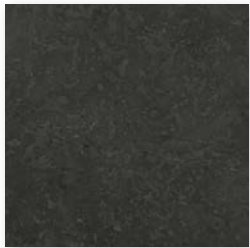


ESTB. 1978

WATERWORKS

Parramore

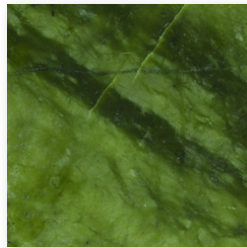
STONE PALETTE



Cavern V2



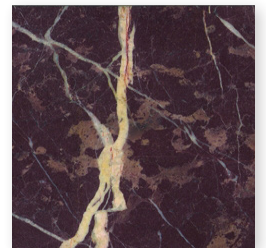
Celeste V3



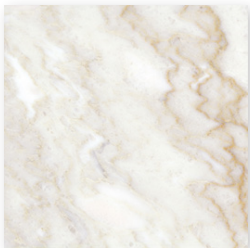
Chartreuse V3



Chinese Black V1



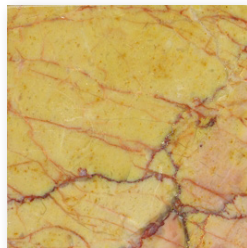
Chinese Purple V2



Cloud Nine V4



Crema Marfil V2



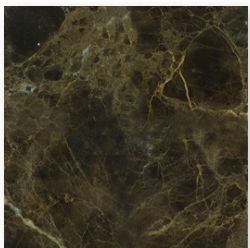
Crema Valencia V3



Desert Pink V3



Driftwood V2



Emperador Dark V3



Emperador Light V3



Gascogne Blue V2



Giallo Reale V3



Graystoke V4



Heavenly Cream V5



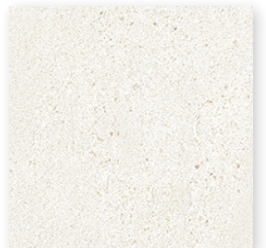
Honey Onyx V3



Horizon V2



Imperial Danby V3



Ivory Cream V1

* See variation chart on page 19

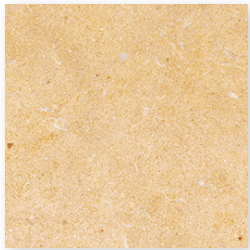


ESTB. 1978

WATERWORKS

Parramore

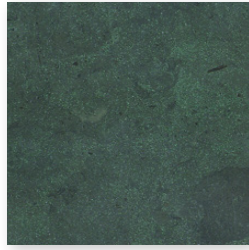
STONE PALETTE



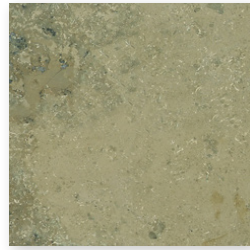
Jerusalem Gold V2



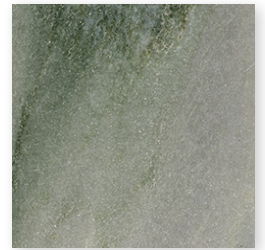
Jura Beige V2



Jura Green V1



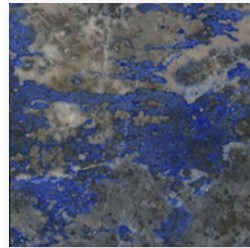
Jura Grey V2



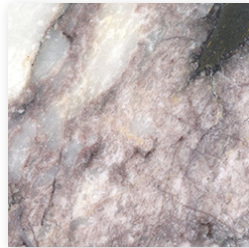
Kay's Green V3



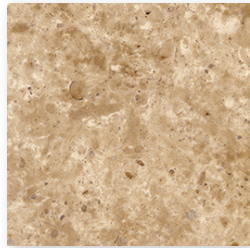
Lagos Gold V2



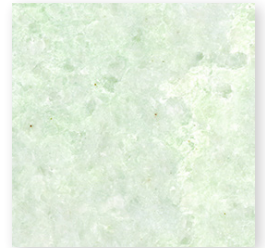
Lapis Azul V3



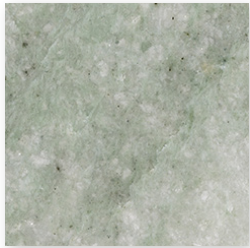
Lavendar Mist V4



Lavigne V4



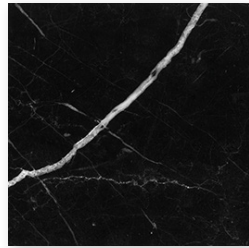
Lettuce Ming V2



Ming Green V3



Montevideo V3



Nero Marquina V3



Pacifica V4



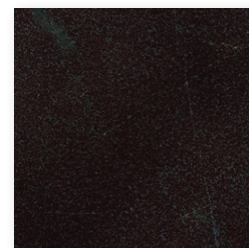
Palomar V3



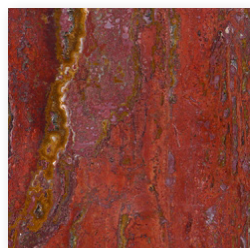
Paperwhite V3



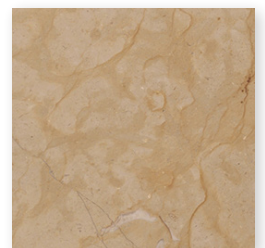
Plumeria V4



Red Lake V3



Red Travertine V2



Renaissance Bronze V2

* See variation chart on page 19

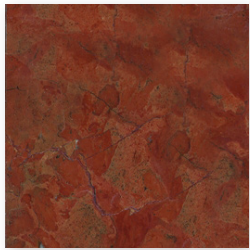


ESTB. 1978

WATERWORKS

Parramore

STONE PALETTE



Rojo Alicante V2



Rosa Portogallo V4



Saint Richard V1



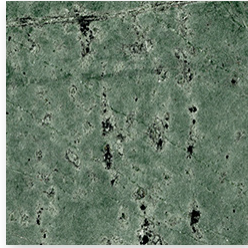
Saint Vincent V1



Snow White V2



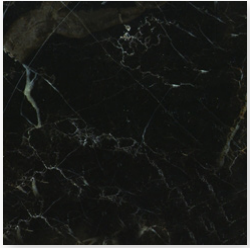
Socorro Grey V2



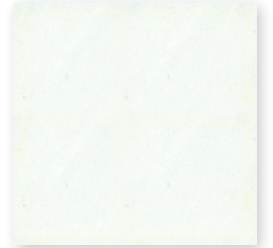
Spring Green V2



Statuarietto V4



Saint Laurent V2



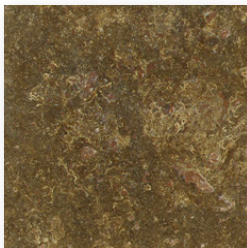
Thassos V1



Thassos Select V1



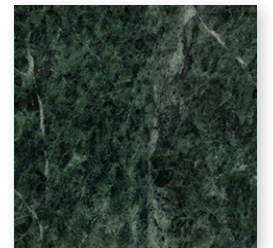
Topaz Onyx V2



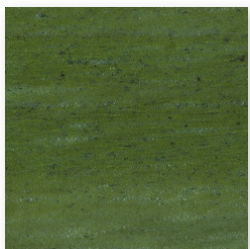
Travertine Noce V2



Travertine White V2



Verde Alpi V2



Verde Luna V3



White Dolomite V2



Whitewood V2

* See variation chart on page 19

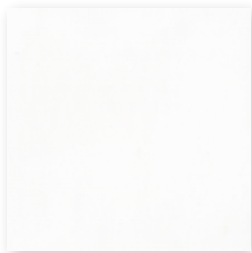


ESTB. 1978

WATERWORKS

Parramore

GLASS/METAL PALETTE



Absolute White



Alabaster



Alexandrite



Aluminum



Amazonite



Amber



Amethyst



Ametrine



Aquamarine



Aventurine



Blue Onyx



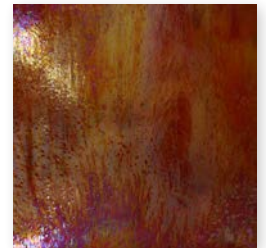
Blue Spinel



Brass



Carnelian



Carnelian (Back)



Cat's Eye



Chalcedony



Champagne



Chrysoberl



Chrysococalla

* See variation chart on page 19



ESTB. 1978

WATERWORKS

Parramore

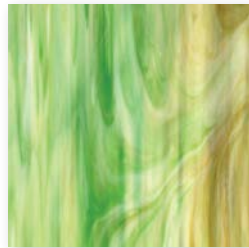
GLASS/METAL PALETTE



Citrine



Covelite



Emerald



Feldspar



Garnet



Iolite



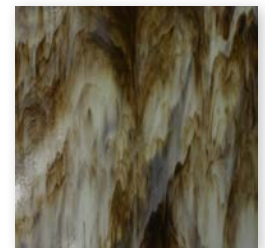
Jade



Jasper



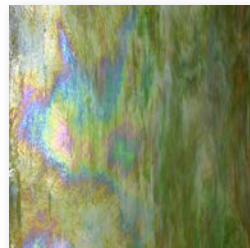
Labradorite



Lavastone



Malachite



Malachite (Back)



Marcasite



Mica



Moonstone



Obsidian



Opal



Peacock Topaz



Pearl



Peridot

* See variation chart on page 19



ESTB. 1978

WATERWORKS

Parramore

GLASS/METAL PALETTE



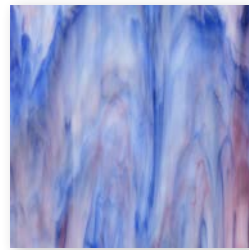
Pewter



Purple Spinel



Quartz



Rhodolite



Rose Quartz



Ruby



Sardonyx



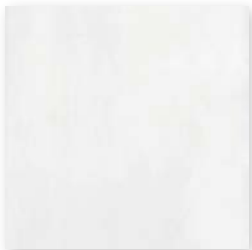
Schist



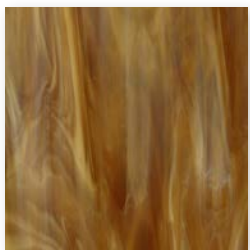
Serpentine



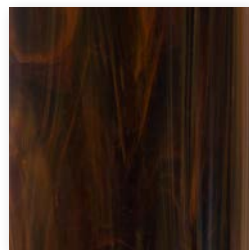
Tanzanite



Thassos White



Tigers Eye



Tortoise Shell



Tourmaline



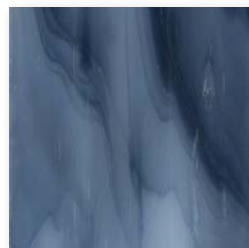
Tsavorite



Turquoise



Verdite



Zircon

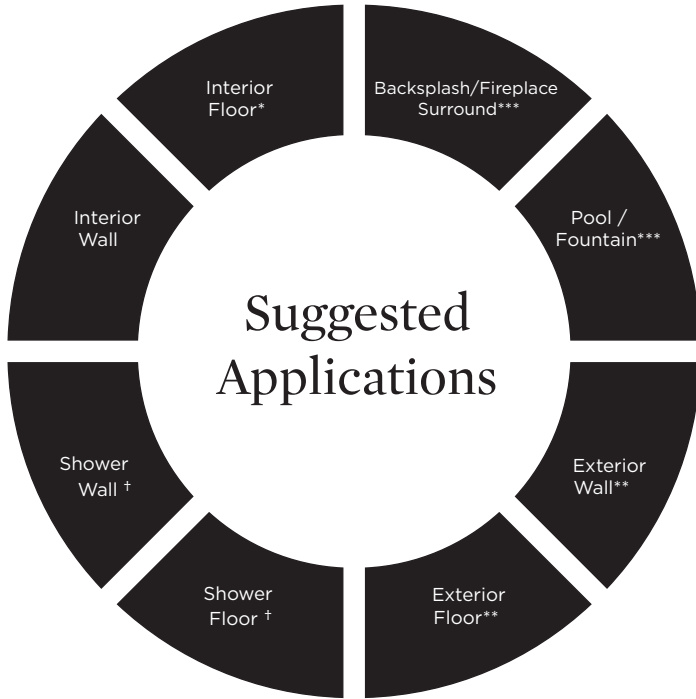
* See variation chart on page 19



ESTB. 1978

WATERWORKS

Parramore



● Recommended Use ○ Not Recommended Use

Application Notes

* Traffic level varies based on materials. Stone is suitable for high traffic. Metal can ONLY be used in small format and will scratch and patina over time.

** Suitable for tropical/subtropical climates ONLY (if properly installed, sealed, and maintained). Metal CANNOT be used for exterior or pools/fountains.

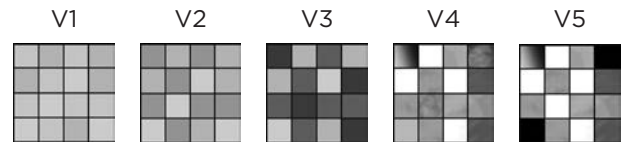
† Suitable for use in wet environment if properly installed, sealed, and maintained. Various stones NOT suitable for wet environments. Please inquire. Metal NOT suitable for submerged application. Mirror glass CANNOT be used in wet application.

*** Tesserae no larger than 2"

Installation / Maintenance

- WATERWORKS ASSUMES NO RESPONSIBILITY FOR INSTALLATION
- Installation constitutes acceptance.
- Mosaic should be installed by a licensed and experienced tile setter.
- Refer to TCNA (Tile Council of North America) or ANSI standards for installation guidelines.
- All mosaics must be inspected PRIOR to installation.
- Dry lay mosaics prior to installation to allow for blending of color variation.
- Waterworks recommends a grouted test panel prior to installation to understand final appearance of grouted materials
- Stone must be sealed before grout installation to allow grout to release and prevent staining.
- Stone and grout should be sealed after installation and maintained regularly.

Variation Level



1. MINIMAL, IF ANY COLOR VARIATION
2. SLIGHT COLOR VARIATION CAN BE EXPECTED
3. A MEDIUM RANGE OF COLOR VARIATION IS TYPICAL; DARKER AND LIGHTER TONES ARE EVIDENT
4. CONSIDERABLE COLOR VARIATION IS TYPICAL; FROM DARKS TO LIGHTS AND SOME TONE CHANGES
5. EXTREME COLOR VARIATION CAN BE EXPECTED - THE RANGE IS OFTEN DIFFERING BUT COMPLEMENTARY

Thickness



*Nominal: +/- 1/8"

Suggested Grout Lines

Varies-
Please follow
mosaic sheet