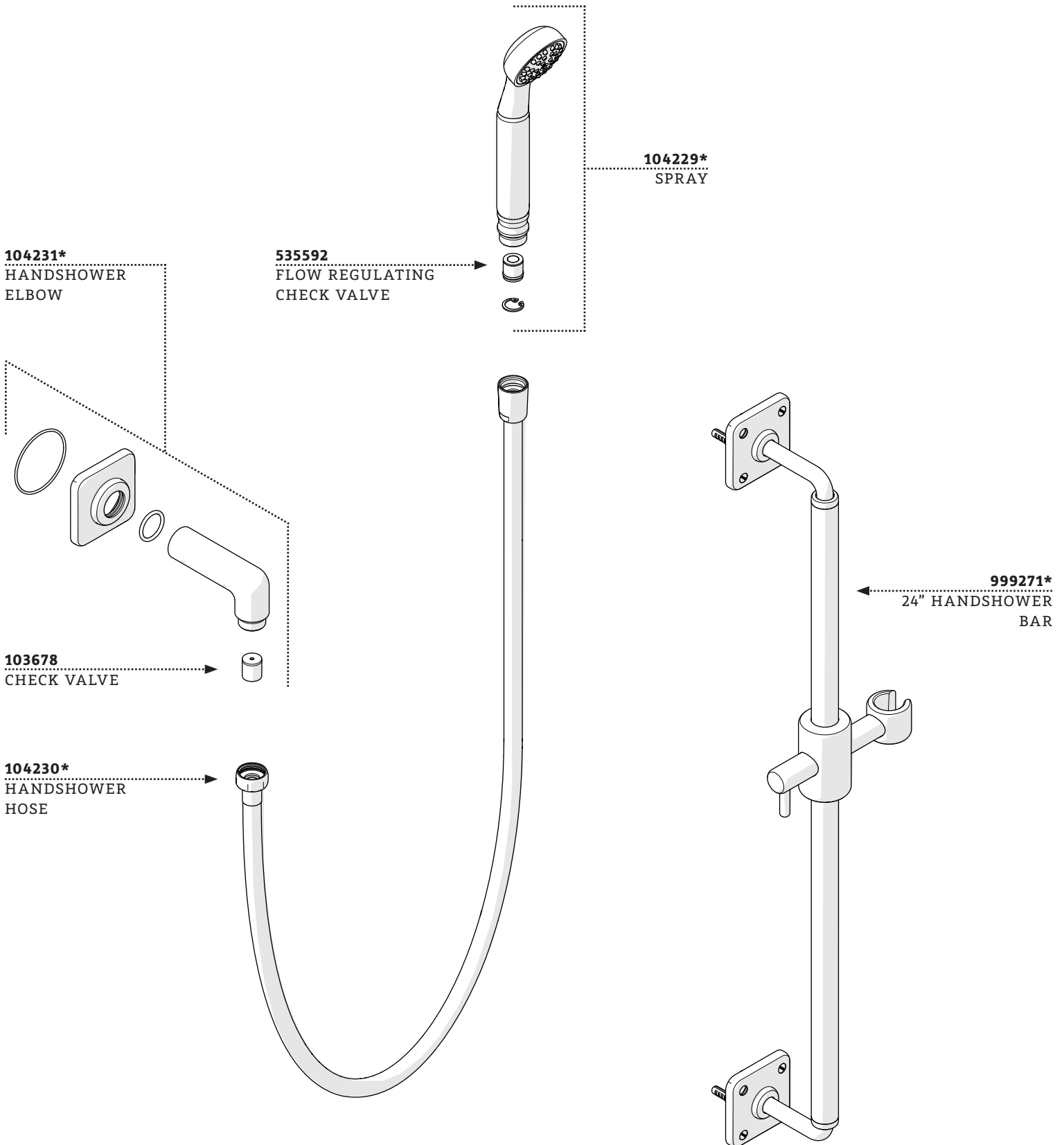
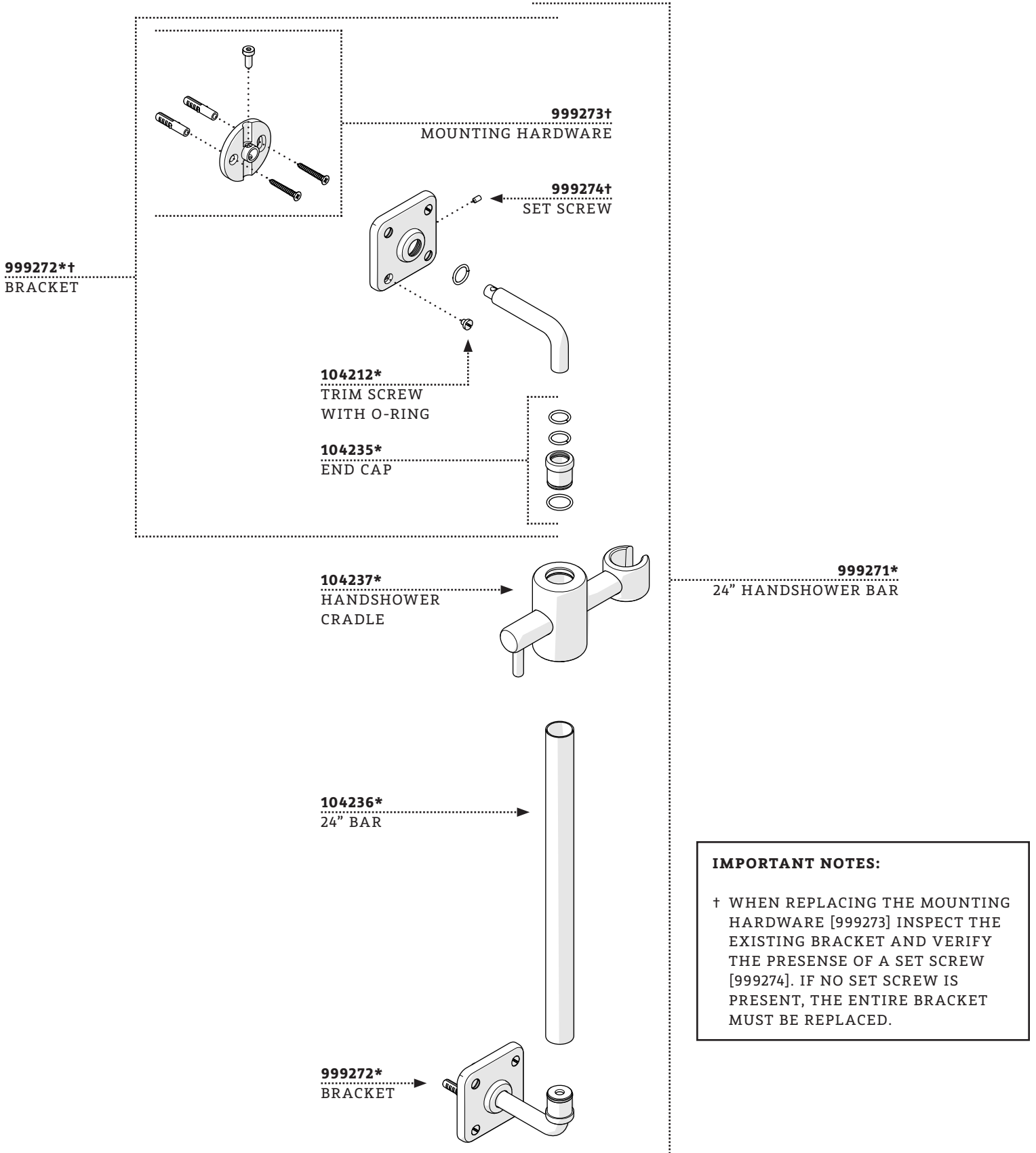


SERVICE PARTS



SERVICE PARTS



IMPORTANT NOTES:

† WHEN REPLACING THE MOUNTING HARDWARE [999273] INSPECT THE EXISTING BRACKET AND VERIFY THE PRESENCE OF A SET SCREW [999274]. IF NO SET SCREW IS PRESENT, THE ENTIRE BRACKET MUST BE REPLACED.