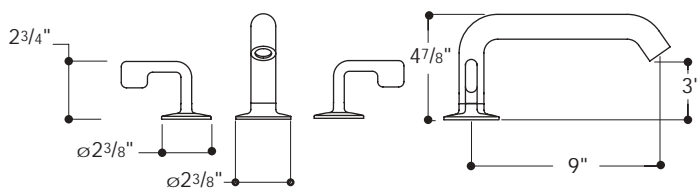
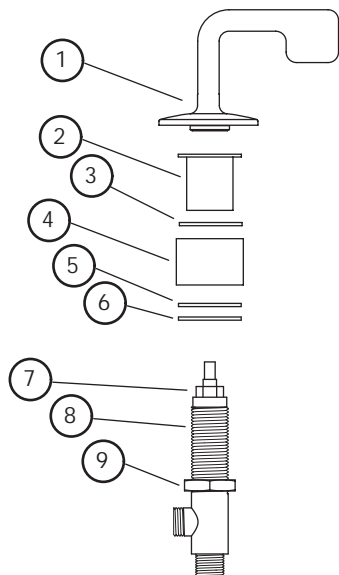


PTTU44-K**Figure 1****IMPORTANT:**

- To ensure this product is installed properly, you must read and follow these guidelines.
- The owner/user of the faucet must keep this information for future reference.
- Be sure your installation conforms to local codes. Anti scald protection is the responsibility of the installer and according to applicable codes.
- This tub filler should be on-site prior to rough in and allows the installer to visualize the installation.
- An access panel must be installed for servicing and installation.
- Check tub deck and tub measurements to assure the spout projects far enough into the tub.

➤ Refer to the specification and assembly drawings attached. Faucet is sold partially assembled but shown fully disassembled for illustrative and service purposes only.

➤ Inspect this product to assure you have all parts required for proper installation.

➤ Use only a strap wrench or protected/smooth-jaw wrench on any finished surface.

➤ Install accessible hot and cold service stop valves to facilitate servicing.

➤ Do NOT use putty during this installation.

ROUGH-IN:

1. Run well supported $\frac{3}{4}$ " hot and cold supply lines for maximum water flow. $1\frac{3}{8}$ " drilling for the mounting holes is recommended.

SIDE VALVE INSTALLATION:

2. Remove the handle trim connector(2), gasket(3) and plastic spacer(4) from the side valve(8). Do not remove the lock nut(9), washer(6), and lower gasket(5).
3. Determine the thickness of the mounting surface. If it is less than $1\frac{1}{2}$ ", slide the plastic spacer(4) onto the side valve. If the surface is greater than $1\frac{1}{2}$ ", do not use the spacer.
4. Insert the side valve(5-9) into the hole in the mounting surface.
5. Thread the handle trim connector(2) completely onto the side valve (about 6 full turns) until it stops. If the connector does not thread down completely, adjust the lock nut.
6. After the connector is on completely, tighten the lock nut against the underside of the mounting surface to secure the side valve.
7. Position the handle assembly(1) over the valve then thread the handle assembly onto the side valve until it stops. Hand tight is adequate; if this assembly is too tight, the handle will bind.
8. Repeat these steps to install the second side valve.

These guidelines have been prepared for the professional contractor to aid in the installation of:
.25 CONCEALED TUB FILLER WITH LEVER HANDLE (PTTU44-K)

1/05

All dimensions are based on original specifications and are subject to change and variation.
 Please consult your Design Associate for current specifications.

W A T E R W O R K S®

.25® Concealed Tub Filler With Lever Handle		Installation Guidelines
<p>TUB FILLER INSTALLATION:</p> <p>9. Unthread and remove the tee, spout mounting nut, metal washer, and rubber gasket from the spout.</p> <p>10. Insert the spout assembly through the spout hole of the mounting surface, reinstall the rubber and metal spout washers then tighten the spout mounting nut to secure the spout to the mounting surface.</p> <p>11. Reinstall the tee onto the spout shank then thread each supply hose into the tee.</p> <p>12. Connect each of the supply hoses to the adjacent side valve making sure the hoses are not pinched/kinked.</p> <p>INSPECT THE INSTALLATION:</p> <p>13. Remove the aerator assembly from the spout using the tool provided. Carefully open the hot and cold valves to flush out any debris in the supply lines.</p> <p>14. Inspect all connections for leaks.</p> <p>15. To service a valve stem (7), loosen then remove the handle assembly (1).</p> <p>➤ If further assistance is required, please contact Product Support at 1-800-927-2120 (8am-7pm EST)</p>		