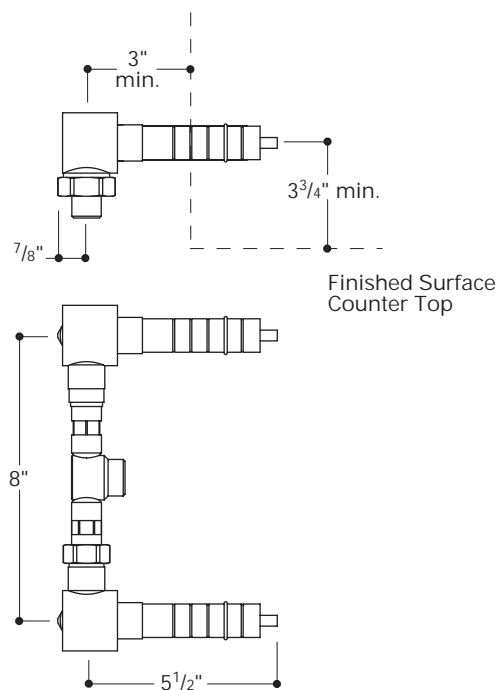


GUSV25R (used with lever handle lavatory faucet)
GUSV27R (used with cross handle lavatory faucet)

Finished Wall Surface



IMPORTANT:

- To ensure this product is installed properly, you must read and follow these guidelines.
- The owner/user of the sink must keep this information for future reference.
- Handles and spout sold separately
- The difference between the GUSV25R and GUSV27R is the cold cartridge function which opens clockwise on the 25R and counter clockwise on the 27R
- This faucet must be on-site prior to rough in and allows the installer to visualize the installation and match the 8" center spread.
- Be sure your installation conforms to local codes.
- Refer to the specification and assembly drawings attached. Faucet is sold partially assembled but shown fully disassembled for illustrative and service purposes only.
- Check countertop and sink measurements to assure the spout projects far enough into the sink.

➤ Inspect this product to assure you have all parts required for proper installation.

➤ Do NOT use putty during this installation.

ROUGH IN:

Rough in Depth: 3" from center of inlets to surface of the finished wall.

Rough in Height: 3 3/4" minimum from center of cartridge stem to surface of counter top to allow for handle clearance in the open position.

1. Run 1/2" hot and cold supply lines. The spread between supplies is 8" on center and is NOT adjustable.
2. Install a well supported 1/2" sweat x 1/2" female IPS adapter onto each supply line.
3. Verify the supplies are secure, level, at the proper spread of 8" and equal depths.
4. Remove the nuts(3) from the faucet body inlets then pull out the inlet adapters(4,5).
5. Slide the nut over the inlet adapter and thread them into the supplies. Use a 10 mm hex wrench to tighten the adapters.
6. Align the faucet onto the supplies making sure that the o-ring(5) does not get pinched then tighten the nuts to secure the faucet.
7. Install a 1/2" IPS nipple to temporarily serve as a spout.
8. Verify the supplies and faucet body are secure then turn on the supplies and check for leaks.

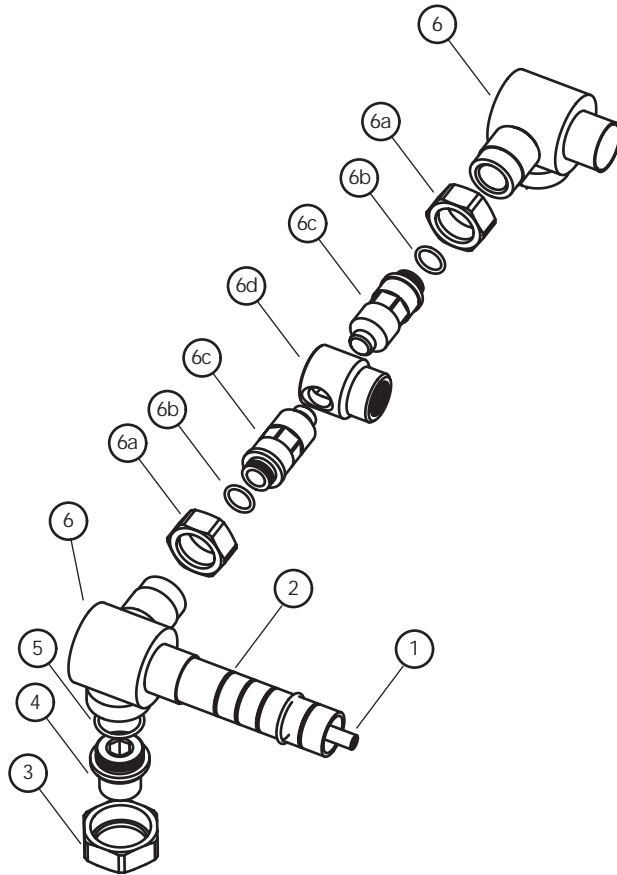
If further assistance is required, please contact Product Support at 1-800-927-2120 (8am-7pm EST)

These guidelines have been prepared for the professional contractor to aid in the installation of:
WALL MOUNTED LAVATORY ROUGH (GUSV25R & GUSV27R)

6/05

All dimensions are based on original specifications and are subject to change and variation. Please consult your Design Associate for current specifications.

W A T E R W O R K S®



① : Cartridge - specify handle style (lever or cross) when ordering hot or cold cartridges