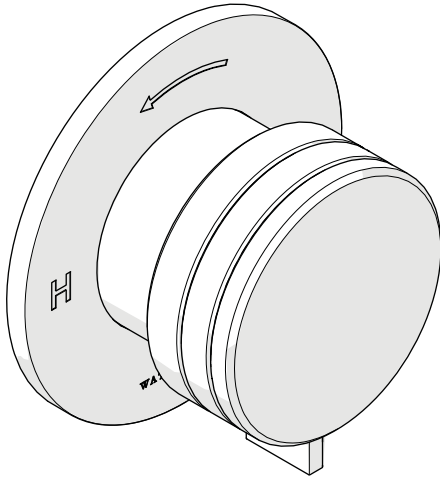


STYLE No. DBPB10



SPECIFICATIONS:

Fitting Hole Diameter: Ø3-1/2" [89mm]
Control Valve Rough-in Depth Minimum: 1-7/8" [48mm]
Control Valve Rough-in Depth Maximum: 2-3/8" [60mm]
Diverter Valve Rough-in Depth Minimum: 2-5/8" [67mm]
Diverter Valve Rough-in Depth Maximum: 3-1/8" [79mm]
Integrated Diverter: No

REQUIRED PLUMBING DETAILS:

Universal Pressure Balance Valve
STYLE No. GUPB81

IMPORTANT:

- To ensure this product is installed properly, you must read and follow these guidelines.
- The owner/user of this product must keep this information for future reference.
- This product is intended to work with the Waterworks Universal Pressure Balance Valve (Style No. **GUPB81**). The VALVE controls on/off and mixes hot and cold water but can also be paired with a Waterworks Universal Two Way (Style No. **GUDV23**) or Three Way (Style No. **GUDV65**) Diverter Valve. All valves sold separately.
- The bottom outlet of the **GUPB81** is intended for use with a diverting tub spout only, when used for a tub and shower combination.
- The risk of scalding exists until the installer has properly calibrated/adjusted the temperature setting during final trim installation.
- This product must be installed by a professional licensed contractor and must be on-site prior to rough-in to allow the installer to visualize the installation.
- Be sure your installation conforms to federal state, and local codes. In the State of Massachusetts, all installations must comply with the rules and regulations set forth within 248 CMR.

- Do not use Pex piping from the valve to the tub spout. It will create too much back pressure and cause the valve to malfunction.
- Refer to the specification and assembly drawings attached. Product is sold partially assembled but shown fully disassembled for illustrative and service purposes only.
- Inspect this product to ensure you have all the parts required for proper installation.
- Use only a strap wrench or protected/smooth-jaw wrench on any finished surface.
- The use of certain plumber's putty may stain stone or tile surfaces.

CARE AND MAINTENANCE:

- If the VALVE has remained unused for an extended period of time (over 3 months) water to the VALVE should have been shut off (via service stops or system control valve) and the VALVE should have been opened to allow the water in the VALVE to evaporate. This is to keep the piston in the CARTRIDGE from sticking, due to stagnant or hard water, once the VALVE is in use again. If the piston does stick, soak the CARTRIDGE in household vinegar. Refer to the Installation Guidelines for the GUPB81 for maintenance instructions, complete parts breakdown and related information.
- **WINTERIZE:** If the valve is going to remain unused during the winter months then water to the valve should be shut off (via service stops or system control valve) and the cartridge should be removed and replaced with the FLUSH PLATE. See the Service & Troubleshooting section for instructions on how to properly remove and re-install the cartridge.

ROUGH-IN:

- Refer to the GUPB81 Installation Guidelines for complete rough-in, flushing, and cartridge installation details.
1. Use the Installation Guidelines provided with the VALVE to properly rough-in and install the VALVE.
 2. Flush the VALVE using the FLUSH PLATE then attach the TILE GUARD and complete the finished wall installation. Both FLUSH PLATE and TILE GUARD are provided with the VALVE.
 3. Remove the TILE GUARD and the FLUSH PLATE and install the CARTRIDGE provided with the VALVE.

IMPORTANT: Carefully follow the CARTRIDGE installation instructions to avoid distortion of the CARTRIDGE STEM.

VALVE OPERATION:

4. Turn on the hot and cold supplies. The VALVE will not operate unless both hot and cold supplies are turned on.

These guidelines have been prepared for the professional contractor to aid in the installation of:
DECIBEL PRESSURE BALANCE TRIM WITH METAL KNOB HANDLE (STYLE No. DBPB10)
All dimensions are based on original specification and are subject to change and variation.
Please consult your Design Associate for current specifications.

WATERWORKS
STUDIO

5. With the VALVE off, place the HANDLE on the CARTRIDGE STEM in the 6 o'clock position then turn the HANDLE counterclockwise through the cold, warm and stopping at the hot position. If additional rotational friction is required to maintain the HANDLE position, tighten the PACKING NUT. See Figure - 01.

NOTE: The HANDLE is for controlling on/off and temperature only, not volume.

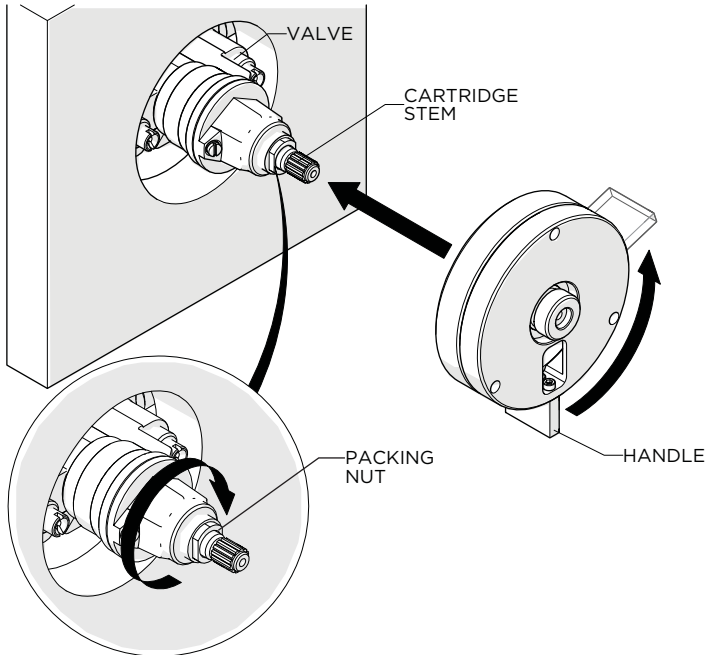


FIGURE - 01

HOT LIMIT SAFETY STOP CALIBRATION:

- **IMPORTANT:** The GUPB81 is equipped with a HOT LIMIT SAFETY STOP SCREW to limit the CARTRIDGE STEM from being turned to excessive hot water discharge temperatures.
- **WARNING:** Failure to adjust the HOT LIMIT SAFETY STOP SCREW properly may result in serious scalding.
- See Figure 02 for Steps 6 - 7.

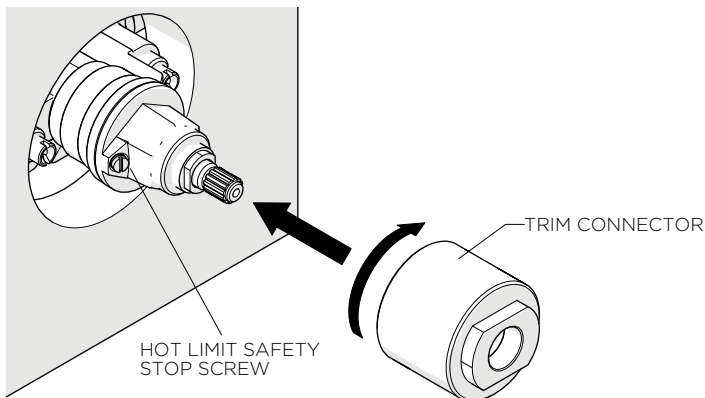


FIGURE 02

6. Open the VALVE to the maximum desired bathing temperature verified with a thermometer then turn the SAFETY STOP SCREW clockwise until it seats.

TRIM INSTALLATION:

7. Thread the TRIM CONNECTOR onto the PACKING NUT until fully seated.
8. Hold the TRIM PLATE against the finished wall then thread the GLAND COVER onto the TRIM CONNECTOR. Securely tighten the GLAND COVER to hold the TRIM PLATE against the finished wall. See Figure - 03.

NOTE: A GASKET for the TRIM PLATE is provided. If desired, a bead of caulk or a clear silicone may be applied where the TRIM PLATE contacts the finished wall.

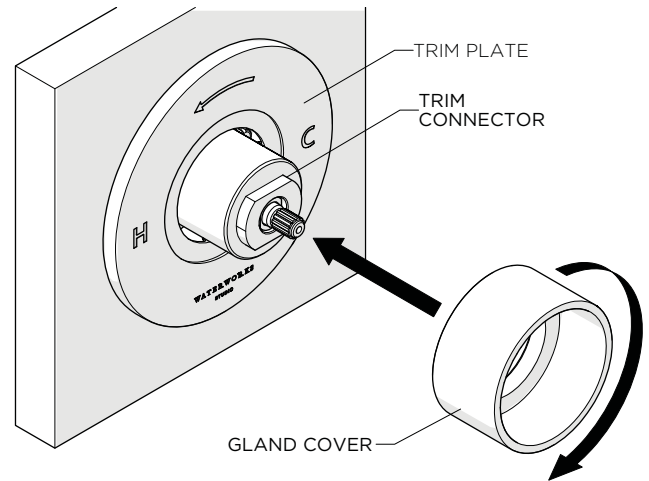


FIGURE - 03

- See Figure 04 for Steps 9 - 11.

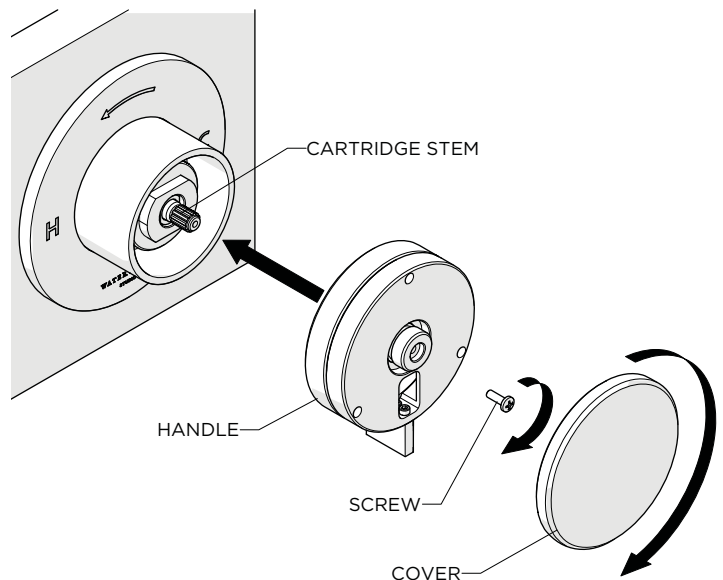


FIGURE - 04

These guidelines have been prepared for the professional contractor to aid in the installation of:
DECIBEL PRESSURE BALANCE TRIM WITH METAL KNOB HANDLE (STYLE No. DBPB10)
 All dimensions are based on original specification and are subject to change and variation.
 Please consult your Design Associate for current specifications.

WATERWORKS
 STUDIO

9. With the VALVE turned off, place the HANDLE on the CARTRIDGE STEM in the 6 o'clock position.
 10. Insert the SCREW into the HANDLE then thread the SCREW into the CARTRIDGE STEM and securely tighten.
 11. Thread the COVER onto the HANDLE and securely tighten.
 12. Turn on the water and verify all the VALVES are functioning properly.
- If further assistance is required, please contact Product Support at 1-800-927-2120 Monday through Friday, 8am - 6pm EST.
 - Refer to the separate Service Parts Documents for available replacement parts.

These guidelines have been prepared for the professional contractor to aid in the installation of:
DECIBEL PRESSURE BALANCE TRIM WITH METAL KNOB HANDLE (STYLE No. DBPB10)
All dimensions are based on original specification and are subject to change and variation.
Please consult your Design Associate for current specifications.

WATERWORKS
STUDIO