

# WATERWORKS

## R.W. ATLAS

R.W. Atlas Exposed Thermostatic System with 8" Shower Rose, Arm, Handshower and Metal Lever Handles

RW51XS



### TECHNICAL DETAILS

ADA Compliance: Yes  
Adjustable versus Fixed Spray: Fixed Spray  
Diameter of Head: 217 mm  
Diameter of Legs / Tubes: 29 mm  
Fittings Hole Diameter: 25 mm  
Flow Restriction Options: 2.0, 1.75, 1.5, 0.92  
Handshower / Spray Hose Length: 1.5 m  
Inlet Connection Size: 3/4"  
Inlet Connection Type: Copper Compression  
Inlet Supply Spread Maximum: 298 mm  
Inlet Supply Spread Minimum: 292 mm  
Installation Type: Wall Mounted  
Integrated Diverter: N  
Pivot: N  
Primary Material: Brass  
Restricted Maximum Flow Rate: 9.5 liters/min  
Spray Included in Unit: N  
Valve Material: Bi-metal Strip  
Water Pressure Maximum: 5.5 bar  
Water Pressure Minimum: 1.5 bar  
Water Pressure Recommended: 3.0 bar

### INSPIRATION

Powerful shapes, genuine materials and unique aesthetic details. The original, impeccable vision of R.W. Atlas pairs American ingenuity with European craftsmanship.

### CODES & STANDARDS

Code # RWXS50: Certified with IAPMO & State of MA.  
Complies with ASME A112.18.1/CSA B125.1, ANSI 117.1 ADA & ASTM E 1621-05.

### PRODUCT FEATURES

Built in Anti-scald protection.  
Standard flow rate is 2.5gpm for handshower only. Also available in high efficiency flow options.  
Contact your sales associate or call 1 (800) 899-6757 for details.

### CERTIFICATIONS

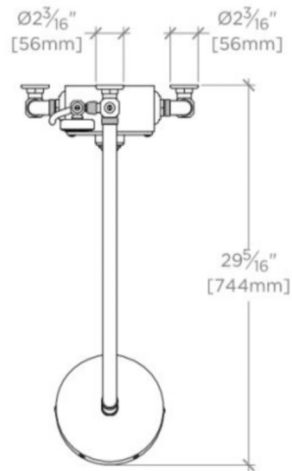


# WATERWORKS

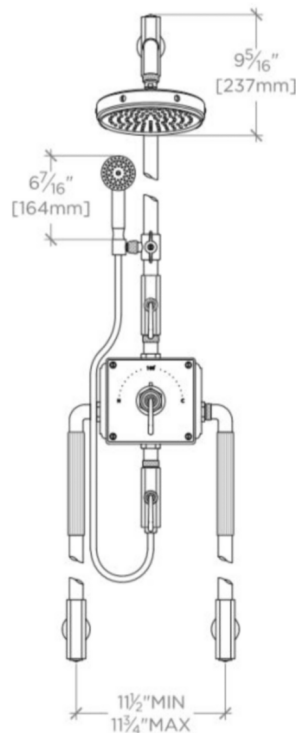
## R.W. ATLAS

RW51XS

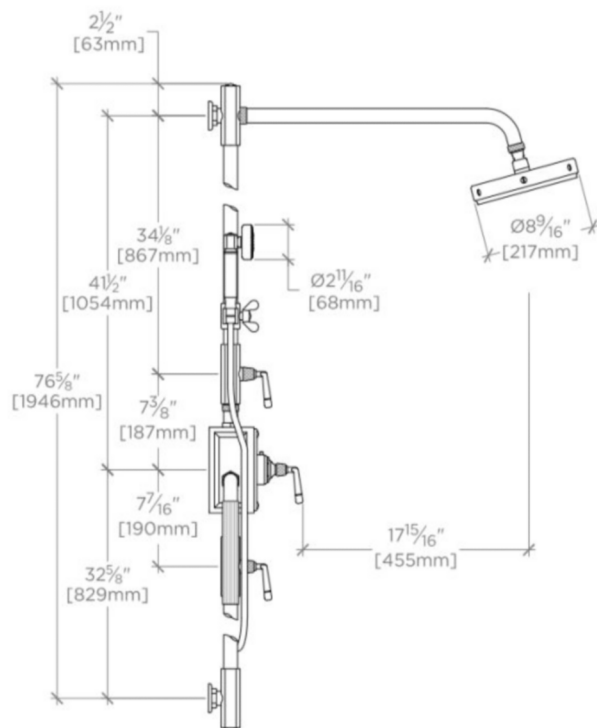
R.W. Atlas Exposed Thermostatic System with 8" Shower Rose,  
Arm, Handshower and Metal Lever Handles



TOP VIEW SCALE:  $\frac{3}{4}"=1'-0"$



FRONT VIEW SCALE:  $\frac{3}{4}"=1'-0"$



SIDE VIEW SCALE:  $\frac{3}{4}"=1'-0"$