



ESTB. 1978

WATERWORKS

Signet



Signet echoes more contemporary options with open fields and repeating patterns. Motifs lean toward light-hearted and casual. With a change of background color or scale, the feel shifts from whimsical informality to restrained chic.



ESTB. 1978

WATERWORKS

Signet

DECORATIVE MOSAIC



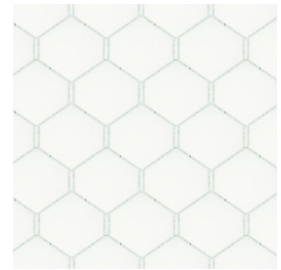
Beehive Grande
Solid



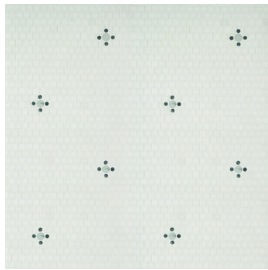
Beehive Grande
Tesserae



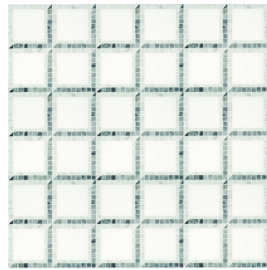
Beehive Petite
Tesserae



Beehive Petite
Solid



Button



Boxton



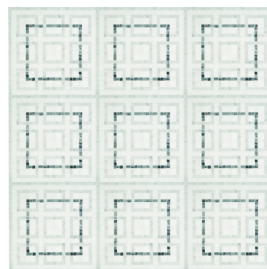
Clematis
Bohemian



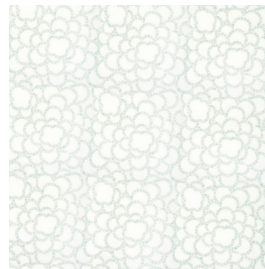
Clematis
Tesserae



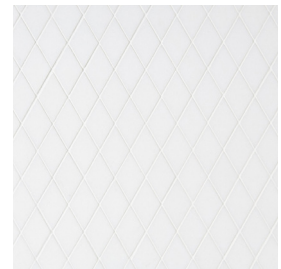
Coffered
Tesserae



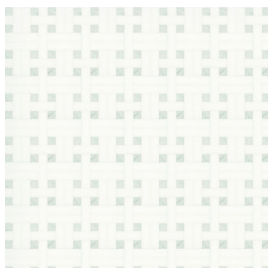
Chinois



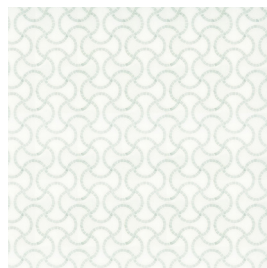
Chrysanthemum



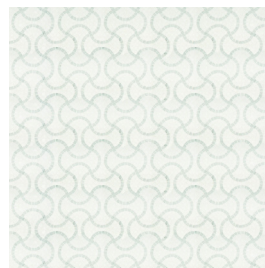
Diamond



Double
Wicket



Escher
Solid



Escher
Tesserae



Epaulette



ESTB. 1978

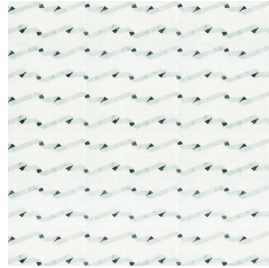
WATERWORKS

Signet

DECORATIVE MOSAIC



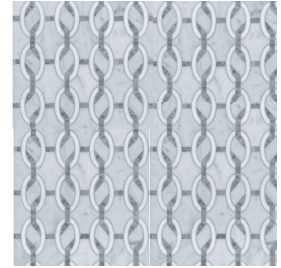
French Grill
Panel



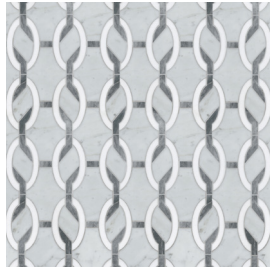
Grosgrain



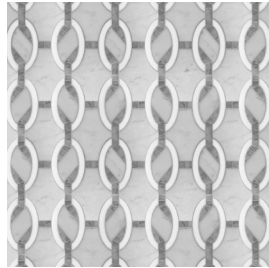
Solid Links
Petite



Solid with Tesserae Links
Petite



Solid with Links
Grande



Solid with Tesserae Links
Grande



Piquet



Parquet
Tesserae



Parquet
Solid



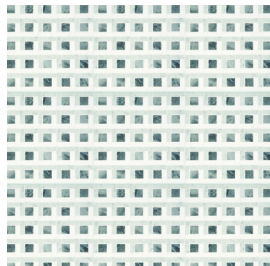
Solid
Papyrus



Bohemian
Papyrus



Ponti



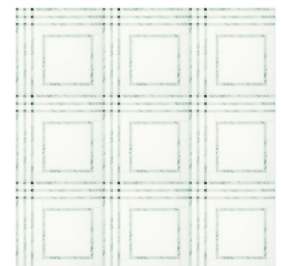
Shadow Box



Tangier "A"



Tangier "B"



Tartan
Solid

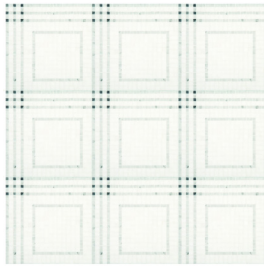


ESTB. 1978

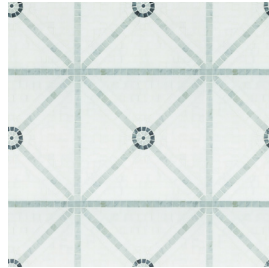
WATERWORKS

Signet

DECORATIVE MOSAIC



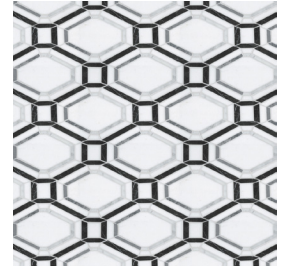
Tartan
Tesserae



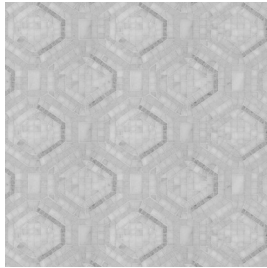
Titus



Tread



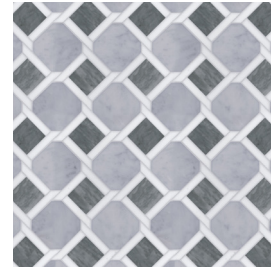
Solid
Utica



Tesserae
Utica



Solid with
Tesserae Utica



Wagner



ESTB. 1978

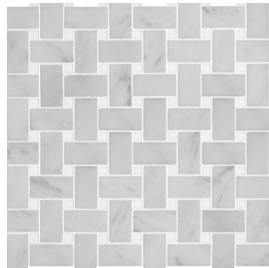
WATERWORKS

Signet

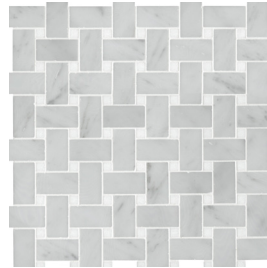
MOSAIC



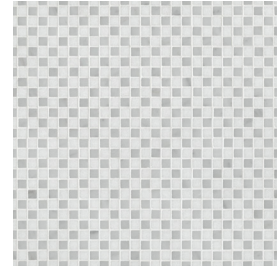
2cm x 4cm
Arc d'Midi



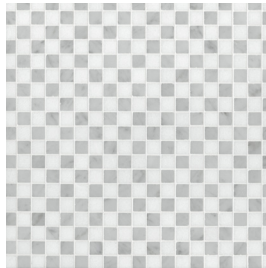
2.5cm x 5cm
Basketweave



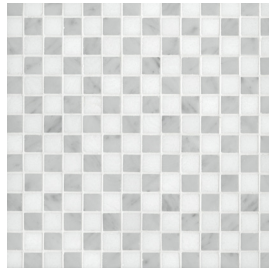
2.5cm x 6cm
Basketweave



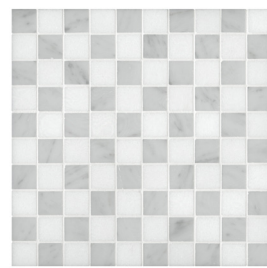
1cm Checked



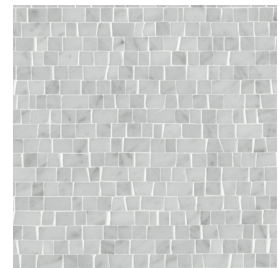
1.5cm Checked



2cm Checked



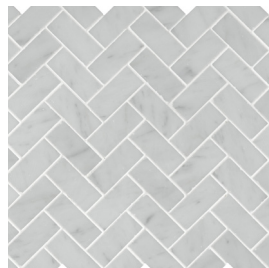
3cm Checked



1.5cm Hand Clipped



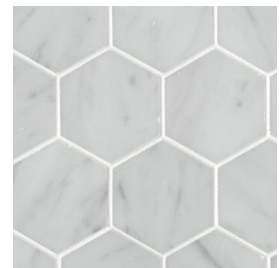
2cm x 4cm
Herringbone



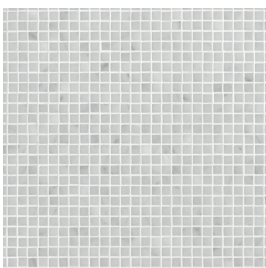
2.5cm x 6cm
Herringbone



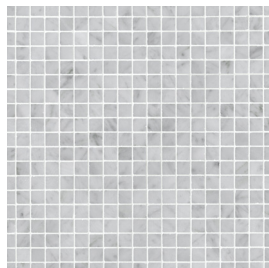
3cm Hexagon



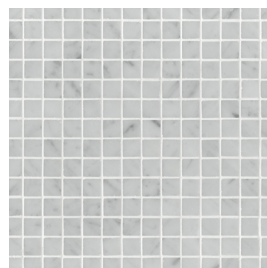
7cm Hexagon



1cm Stacked



1.5cm Stacked



2cm Stacked



2.5cm x 6cm
Stacked



ESTB. 1978

WATERWORKS

Signet

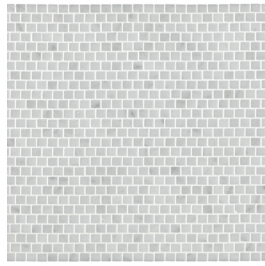
MOSAIC



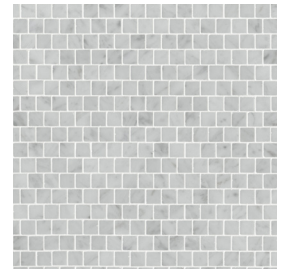
3cm Stacked



2" Stacked



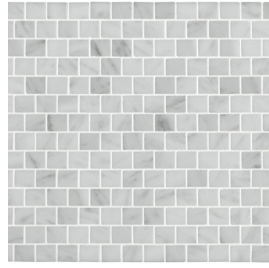
1cm Staggered



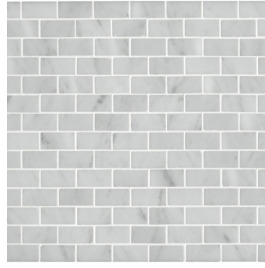
1.5cm Staggered



1.5cm x 3cm
Staggered



2cm Staggered



2 cm x 4cm
Staggered



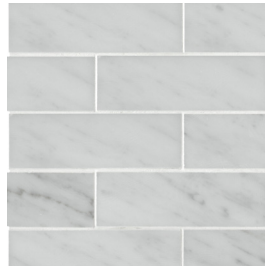
2.5cm x 5cm
Staggered



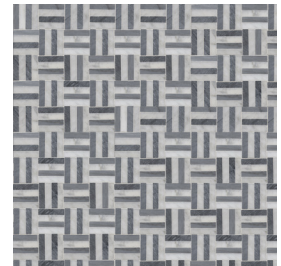
2.5cm x 6cm
Staggered



3cm Staggered



2" x 6" Staggered



2cm x 4cm
Twill



ESTB. 1978

WATERWORKS

Signet

BORDER



Chinois ^{BC, CC}



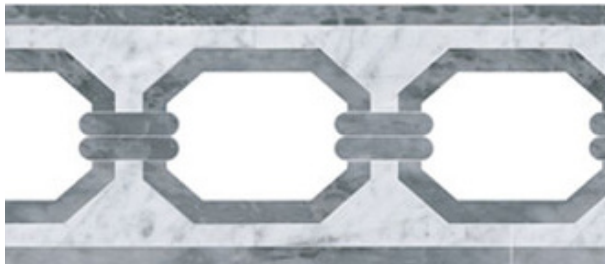
Dazzle ^{BC, CC}



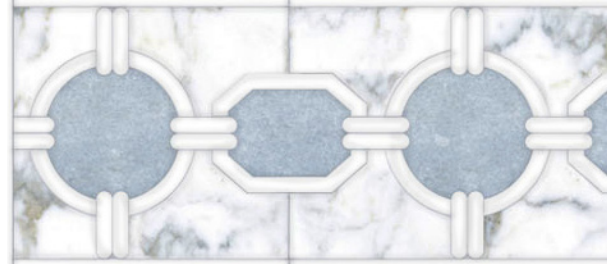
Dentil ^{BC, CC}



Epaulette Petite



Epaulette Medium



Epaulette Grande



French Curve ^{BC, CC}



Keychain ^{BC, CC}

BC: Available in Block Corner CC: Available in Continuous Corner



ESTB. 1978

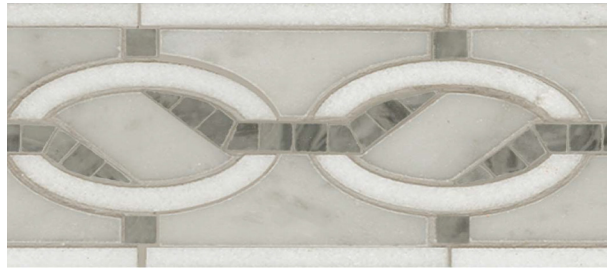
WATERWORKS

Signet

BORDER



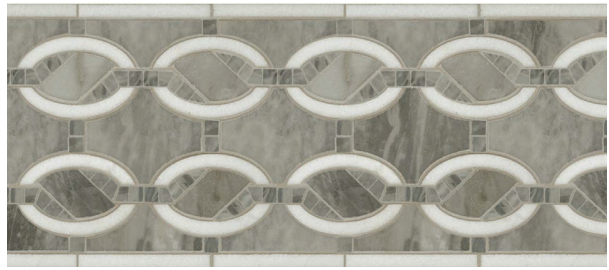
Solid Links
Petite Single



Solid with Tesserae Links
Petite Single



Solid Links
Petite Double



Solid with Tesserae Links
Petite Double



Mariner Petite ^{BC, CC}



Olivia Petite ^{BC, CC}



Olivia Grande ^{BC, CC}



Papyrus

BC: Available in Block Corner CC: Available in Continuous Corner



ESTB. 1978

WATERWORKS

Signet

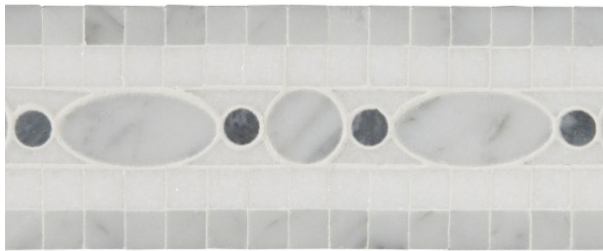
BORDER



Piquet ^{BC, CC}



Ponti



Popit ^{BC, CC}



Solid Rivoli



Tesserae Rivoli



Roman Numeral ^{BC, CC}



Tangier "B" Petite



Tangier "B" Medium

BC: Available in Block Corner CC: Available in Continuous Corner



ESTB. 1978

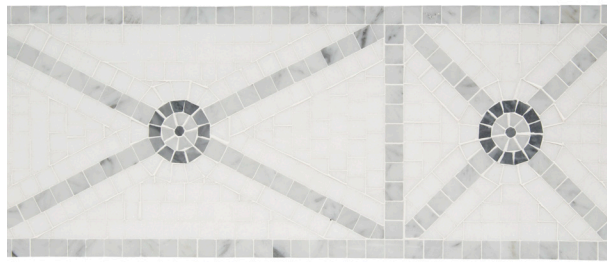
WATERWORKS

Signet

BORDER



Tangier "B" Grande



Tesserae Titus Grande^{BC}



Titus Petite^{BC}



Tyler Grande^{BC, CC}



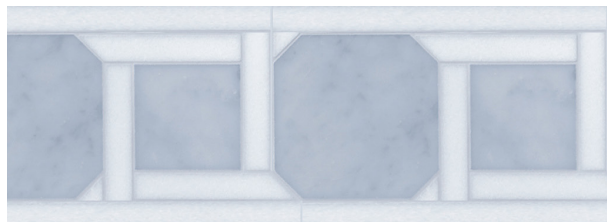
Tyler Petite^{BC, CC}



Wagner A



Wagner B



Wagner C

BC: Available in Block Corner CC: Available in Continuous Corner

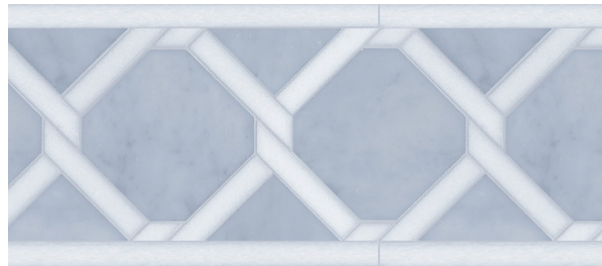


ESTB. 1978

WATERWORKS

Signet

BORDER



Wagner D



ESTB. 1978

WATERWORKS

Signet

PALETTE



Aegean Brown V3



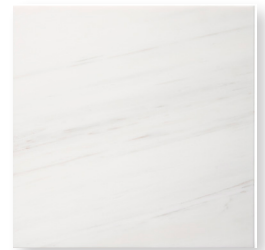
Alba Chara V3



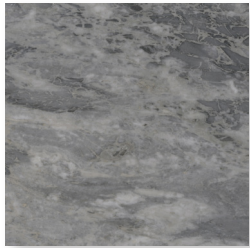
Aranci Di Selva V3



Athens Grey V3



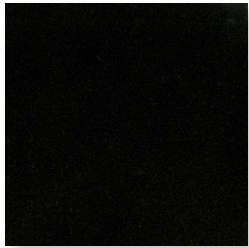
Aurora V2



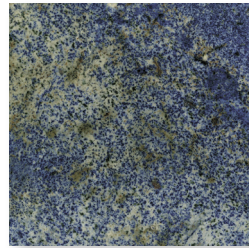
Bardiglio V3



Bianco Antico V3



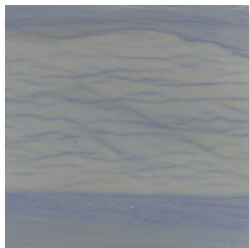
Black Granite V1



Blue Bahia V3



Blue Celeste V3



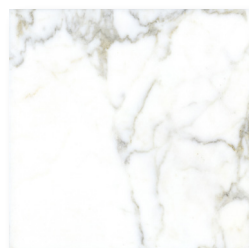
Blue Macauba V4



Botticino V2



Breccia Oniciata V3



Calacatta V4



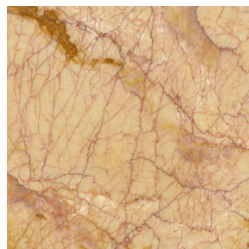
Carrara V3



Cippolino V3



Crema Marfil V2



Crema Valencia V3



Cremonesia V2



Dove Pink V3

* See variation chart on page 16



ESTB. 1978

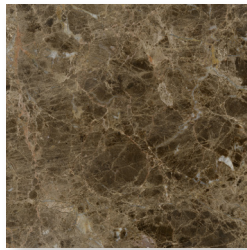
WATERWORKS

Signet

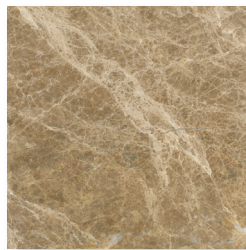
PALETTE



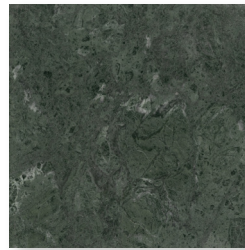
Durango V2



Emperador Dark V3



Emperador Light V3



Empress Green V2



French Vanilla V3



Gascogne Blue V2



Georgia Peach V3



Giallo Reale V3



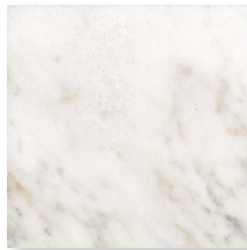
Glacier Ice V4



Graphite V2



Honey Onyx V3



Imperial Danby V3



Ivory Cream V1



Jerusalem Gold V2



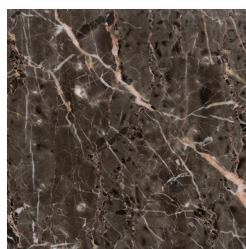
Lagos Azul V2



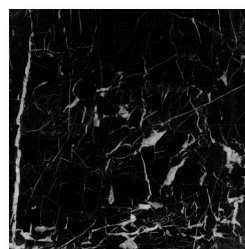
Lagos Gold V2



Ming Green V3



Mystique V4



Nero Marquina V3



Pompeii Gold V2

* See variation chart on page 16

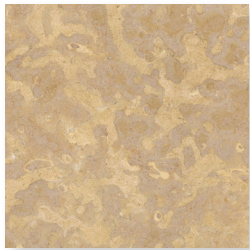


ESTB. 1978

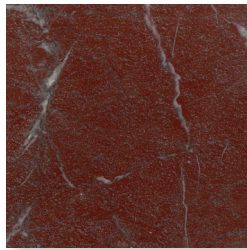
WATERWORKS

Signet

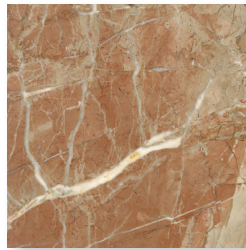
PALETTE



Provenza V3



Red Lake V3



Rojo Alicante V2



Roman Blue V3



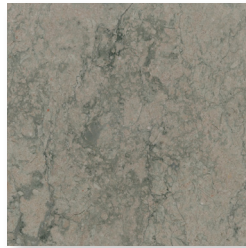
Rosa Portugallo V4



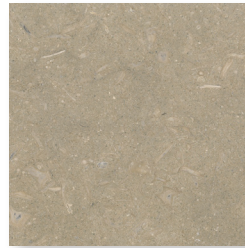
Rosa Verona V2



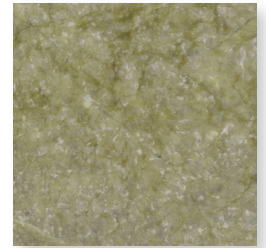
Saint Laurent V2



Salmon Moss V2



Seagrass V3



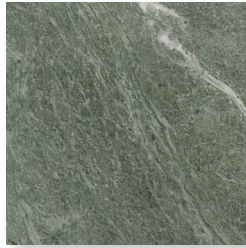
Shamrock V3



Siberian White V3



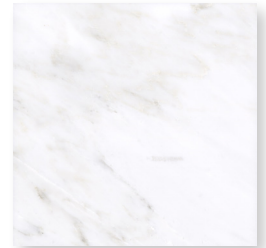
Smoke V3



Spring Green V2



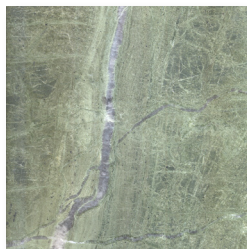
Statuary V4



Statuary Mist V3



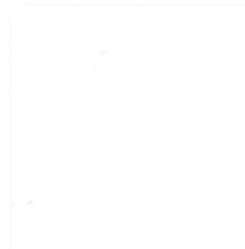
Tea Rose V2



Teos Green V3



Thassos Select V1



Thassos Standard V1



Travertine Navona V2

* See variation chart on page 16



ESTB. 1978

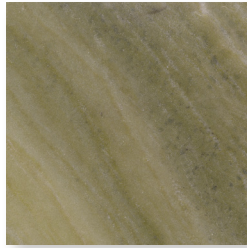
WATERWORKS

Signet

PALETTE



Travertine Noce V2



Verde Luna V3



Whitewood V3



Zephyr V3

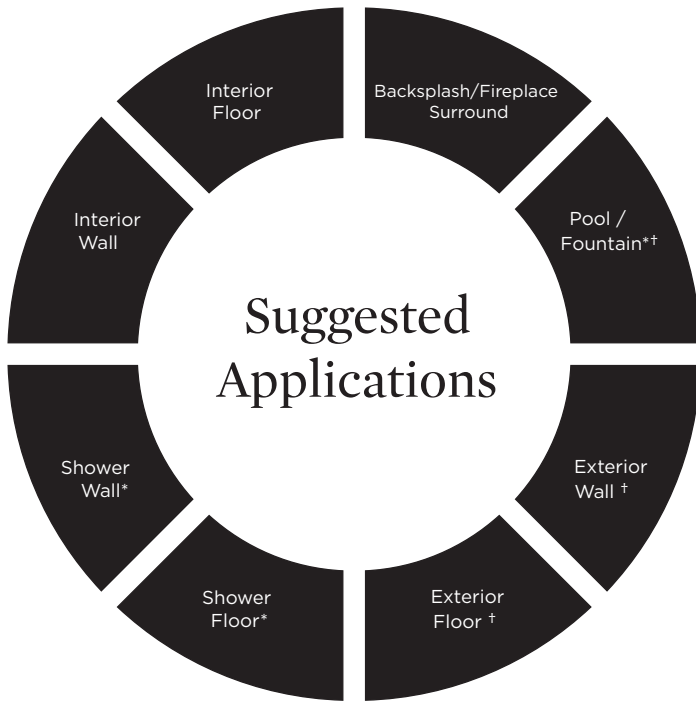
* See variation chart on page 16



ESTB. 1978

WATERWORKS

Signet



● Recommended Use ○ Not Recommended Use

Application Notes

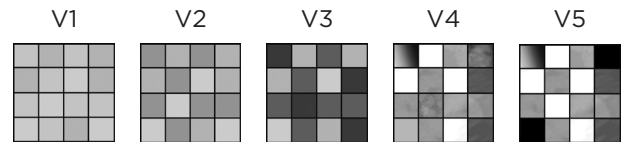
* Various stones are suitable for use in wet environments, including steam showers, if properly installed, sealed, and maintained. Please inquire.

† Some stones are suitable in tropical/subtropical climates. Testing may be required. Please inquire.

Installation / Maintenance

- WATERWORKS ASSUMES NO RESPONSIBILITY FOR INSTALLATION
- Installation constitutes acceptance.
- Mosaic should be installed by a licensed and experienced tile setter.
- Refer to TCNA (Tile Council of North America) or ANSI standards for installation guidelines.
- All mosaics must be inspected PRIOR to installation.
- Dry lay mosaics prior to installation to allow for blending of color variation.
- Stone must be sealed before grout installation to allow grout to release and prevent staining.
- Stone and grout should be sealed after installation and maintained regularly.

Variation Level



1. MINIMAL, IF ANY COLOR VARIATION
2. SLIGHT COLOR VARIATION CAN BE EXPECTED
3. A MEDIUM RANGE OF COLOR VARIATION IS TYPICAL; DARKER AND LIGHTER TONES ARE EVIDENT
4. CONSIDERABLE COLOR VARIATION IS TYPICAL; FROM DARKS TO LIGHTS AND SOME TONE CHANGES
5. EXTREME COLOR VARIATION CAN BE EXPECTED - THE RANGE IS OFTEN DIFFERING BUT COMPLEMENTARY

Thickness



*Nominal: +/- 1/8"

Suggested Grout Lines

Varies-
Please follow
mosaic sheet