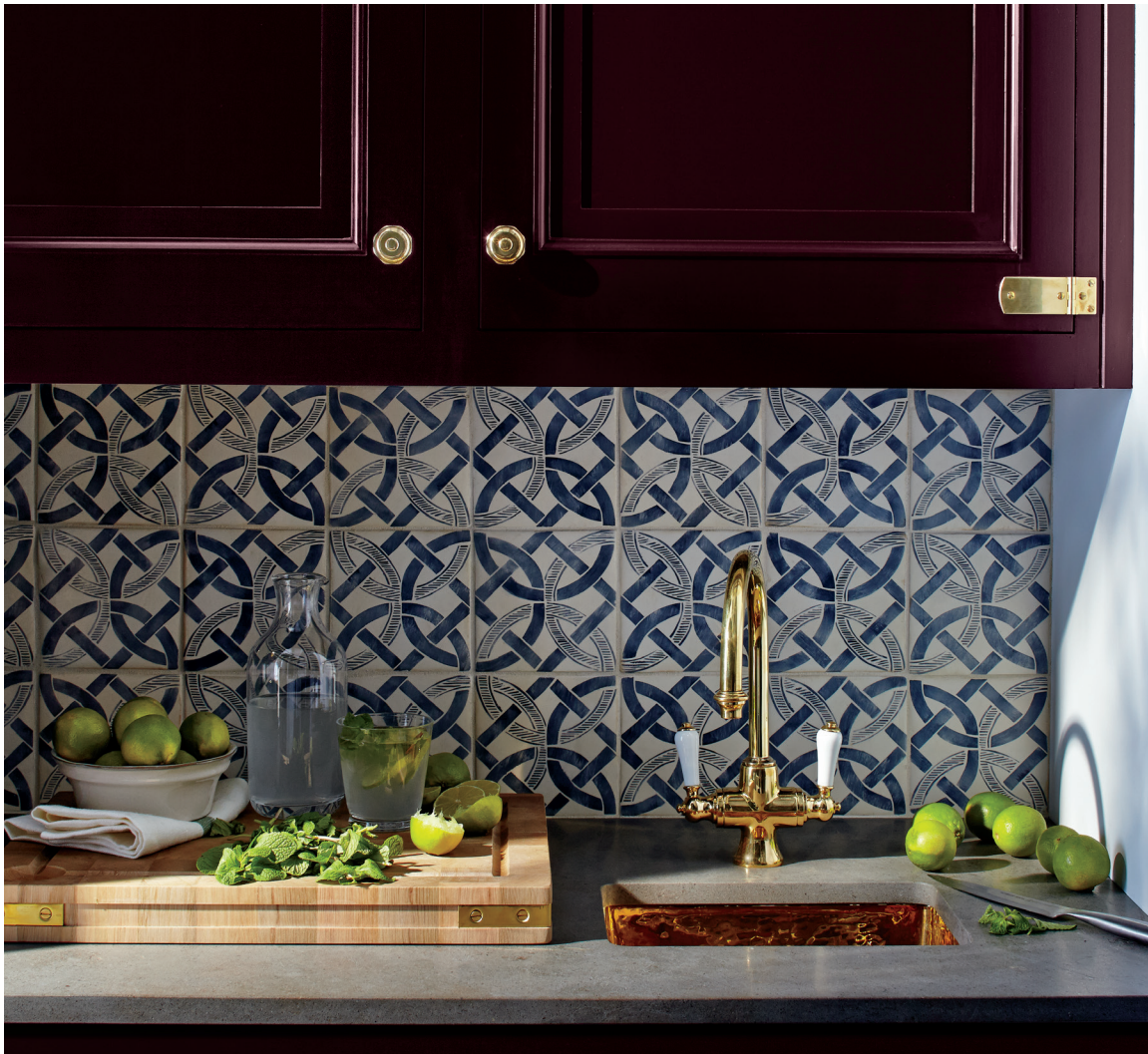




ESTB. 1978

WATERWORKS

Redbank



The artistry of creating terracotta tiles is re-imagined for the modern kitchen with these handmade and hand-painted designs. Completely customizable program with a range of unique patterns—from geometric to organic—and beautiful colors that can be composed in almost endless combinations.



ESTB. 1978

WATERWORKS

Redbank

FIELD TILE



Field Tile 3" x 3"



Field Tile 3" x 6"



Field Tile 6" x 6"



ESTB. 1978

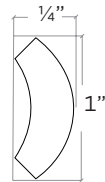
WATERWORKS

Redbank

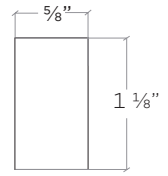
MOLDING



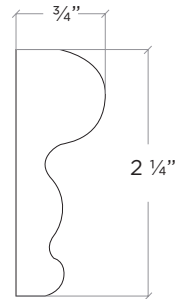
Quarter Round 1" x 6"



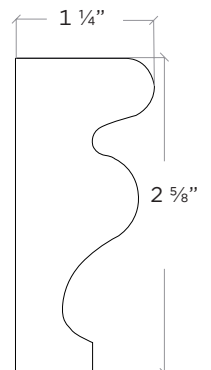
Stick Liner 1 1/8" x 7 3/4"



Chair Rail 2 1/4" x 7 3/4"



Molding Crown 2 5/8" x 8"





ESTB. 1978

WATERWORKS

Redbank

PATTERNS



Bangles



Cintimani



Hawse



Isoceles



Maidenhair



Milkweed



Parquet



Pleat



Quad



ESTB. 1978

WATERWORKS

Redbank

PATTERNS



Rep



Sawtooth



Tealeaf



Tweet



Wink

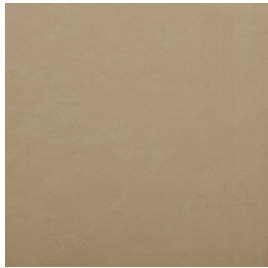


ESTB. 1978

WATERWORKS

Redbank

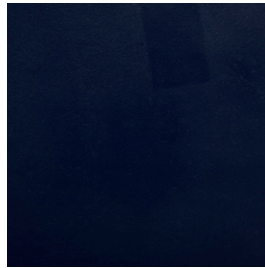
PALETTE



Barley Solid V2



Barley Brushed V4



Bluebird Solid V2



Bluebird Brushed V4



Butterscotch Solid V2



Butterscotch Brushed V4



Celery Solid V2



Celery Brushed V4



Clover Solid V2



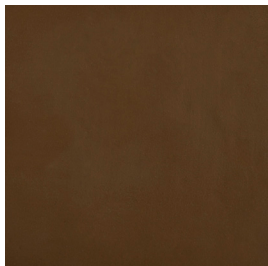
Clover Brushed V4



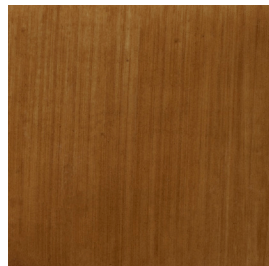
Driftwood Solid V2



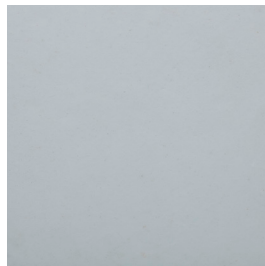
Driftwood Brushed V4



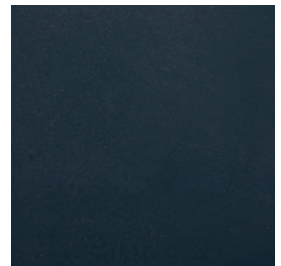
Harvest Solid V2



Harvest Brushed V4



Jasmine Solid V2



Marina Solid V2

**All brushed color palette images are shown over parchment.*

*** See variation chart on page 9*



ESTB. 1978

WATERWORKS

Redbank

PALETTE



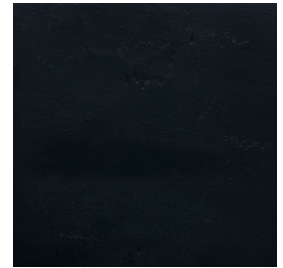
Marina
Brushed V4



Moss
Solid V2



Moss
Brushed V4



Noir
Solid V2



Noir
Brushed V4



Ochre
Solid V2



Ochre
Brushed V4



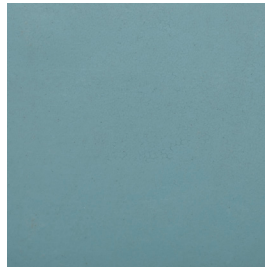
Parchment
Solid V2



Pecan
Solid V2



Pecan
Brushed V4



Robins Egg
Solid V2



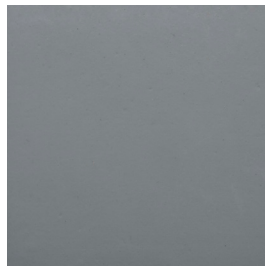
Robins Egg
Brushed V4



Slate
Solid V2



Slate
Brushed V4



Stone
Solid V2



Stone
Brushed V4

**All brushed color palette images are shown over parchment.*

*** See variation chart on page 9*

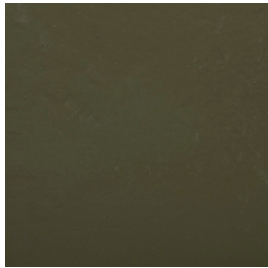


ESTB. 1978

WATERWORKS

Redbank

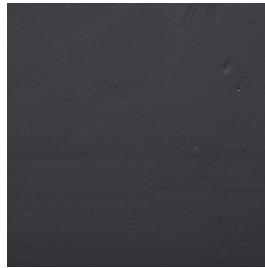
PALETTE



Sulphur
Solid V2



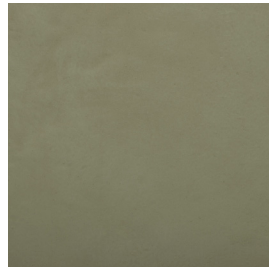
Sulphur
Brushed V4



Thunder
Solid V2



Thunder
Brushed V4



Willow
Solid V2



Willow
Brushed V4

**All brushed color palette images are shown over parchment.*

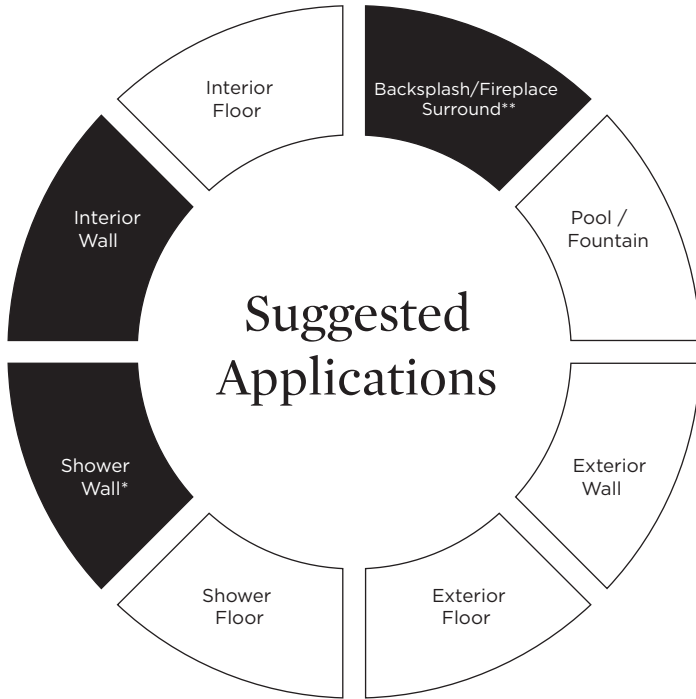
*** See variation chart on page 9*



ESTB. 1978

WATERWORKS

Redbank



● Recommended Use ○ Not Recommended Use

Application Notes

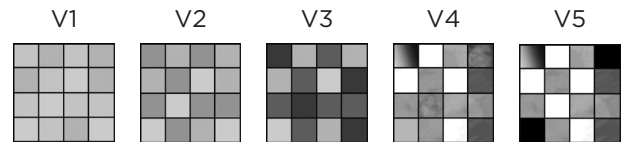
* MUST be 6-8" above shower pan with cautionary usage in niches and benches that could see standing water, in addition to being properly installed, sealed, and maintained.

** Care should be taken to ensure tiles are not exposed to high levels of direct heat or open flame in excess of 450 °F

Installation / Maintenance

- WATERWORKS ASSUMES NO RESPONSIBILITY FOR INSTALLATION
- Installation constitutes acceptance.
- Tile should be installed by a licensed and experienced tile setter.
- Refer to TCNA (Tile Council of North America) or ANSI standards for installation guidelines.
- All tile must be inspected PRIOR to installation.
- Dry lay tile prior to installation to allow for blending of color variation.
- Waterworks recommends a grouted test panel prior to installation to understand final appearance of grouted materials
- Re-seal tile and grout after installation and maintain regularly.

Variation Level



1. MINIMAL, IF ANY COLOR VARIATION
2. SLIGHT COLOR VARIATION CAN BE EXPECTED
3. A MEDIUM RANGE OF COLOR VARIATION IS TYPICAL; DARKER AND LIGHTER TONES ARE EVIDENT
4. CONSIDERABLE COLOR VARIATION IS TYPICAL; FROM DARKS TO LIGHTS AND SOME TONE CHANGES
5. EXTREME COLOR VARIATION CAN BE EXPECTED - THE RANGE IS OFTEN DIFFERING BUT COMPLEMENTARY

Thickness



*Nominal: +/- 1/8"

Suggested Grout Lines

1/8"