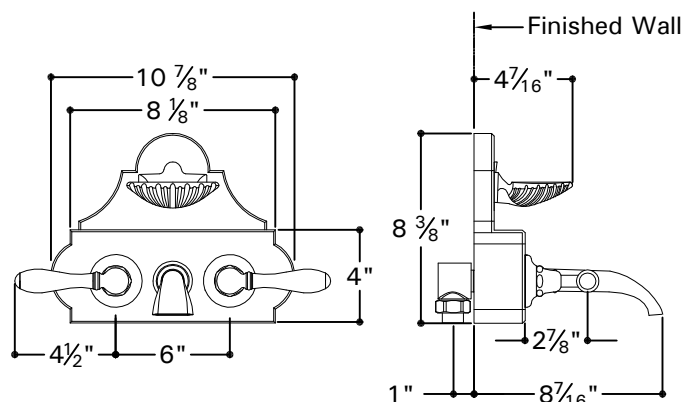


ETTU45 (trim) & GUSV90ET (rough)

IMPORTANT

- To ensure this product is installed properly, you must read and follow these guidelines.
- The owner/user of the tub filler must keep this information for future reference.
- Blocking is mandatory for securing the trim.
- This tub filler must be on-site prior to rough in and allow the installer to visualize the installation and match the 6" center spread.
- Be sure your installation conforms to local codes.
- Refer to the specification and assembly drawings attached. The tub filler is sold partially assembled but shown fully disassembled for illustrative and service purposes only.
- Check tub measurements to assure the spout projects far enough into the tub.
- Inspect this product to assure you have all parts required for proper installation.
- Use only a strap wrench or protected/smooth-jaw wrench on any finished surface.
- Do NOT use putty during this installation.

ROUGH IN:

Rough in Depth: 1" from center of inlets to surface of the finished wall.

IMPORTANT: Wood blocking is mandatory for securing the trim to the wall using the 2 screws (13a) provided. Make sure there is a 2"x4" (minimum) area of blocking 3" above the centerline of the rough.

1. Run 1/2" hot and cold supply lines. The spread between supplies is 6" on center and is NOT adjustable.
2. Install a well supported 1/2" sweat x 1/2" female IPS adapter onto each supply line.
3. Verify the supplies are secure, level, at the proper spread of 6" and equal depths.
4. Remove the nuts (1) from the tub filler body inlets then pull out the inlet adapters (1a, 1b).
5. Slide the nut over the inlet adapter and thread them into the supplies. Use a 10 mm hex wrench to tighten the adapters.
6. Align the tub filler body onto the supplies making sure that the o-ring (1b) does not get pinched then tighten the nuts (1) to secure the tub filler.
7. In preparation of attaching the spout, sweat a piece of 1/2" copper pipe (10) of appropriate length onto a 1/2" male IPS x 1/2" sweat adapter (9- not included) then thread it into the tub filler body.
IMPORTANT: The copper pipe must protrude at least 3" beyond the finished wall.
8. Verify the supplies and tub filler body are secure then turn on the supplies and check for leaks.

These guidelines have been prepared for the professional contractor to aid in the installation of:
ETOILE WALL MOUNTED FLARED SPOUT TUB FILLER (ETTU45 & GUSV90ET)
 All dimensions are based on original specification and are subject to change and variation. Please consult your Design Associate for current specifications.

W A T E R W O R K S

HANDLE INSTALLATION:

9. Unthread the 3 screws (14a) that secure the soap dish (14) to the valve trim and remove the soap dish.
10. Pull the tile shield off the threaded sleeves (3) then slide the trim (13) up tight to the wall. Verify general alignment of the trim in relation to the rough.
11. Hand tighten the flat escutcheon (17,17a) then handle assembly (16-16g) onto the threaded sleeve until both will not thread further.
12. Measure the distance from the face of the flat escutcheon to the face of the bell escutcheon (16d). This measurement will be the length of threaded sleeve that will be cut off in step 14.
13. Remove the handle assembly, escutcheon, and threaded sleeve.
14. Mark then cut the threaded sleeve the amount equal to what was measured in step 12. Do NOT cut the end of the threaded sleeve (3) that has internal threads.
15. Thread the threaded sleeve back onto the valve stem/cartridge (2) and mark the valve stem at a point that is $\frac{1}{2}$ " BEYOND the end of the threaded sleeve.
16. Remove the threaded sleeve and valve stem then cut the valve stem at the mark made in step 15.
17. Reinstall the valve stem/cartridge (2) then the threaded sleeve (3) and make sure the stem tip is $\frac{1}{2}$ " beyond the end of the sleeve. Adjust/cut the stem or sleeve as needed.

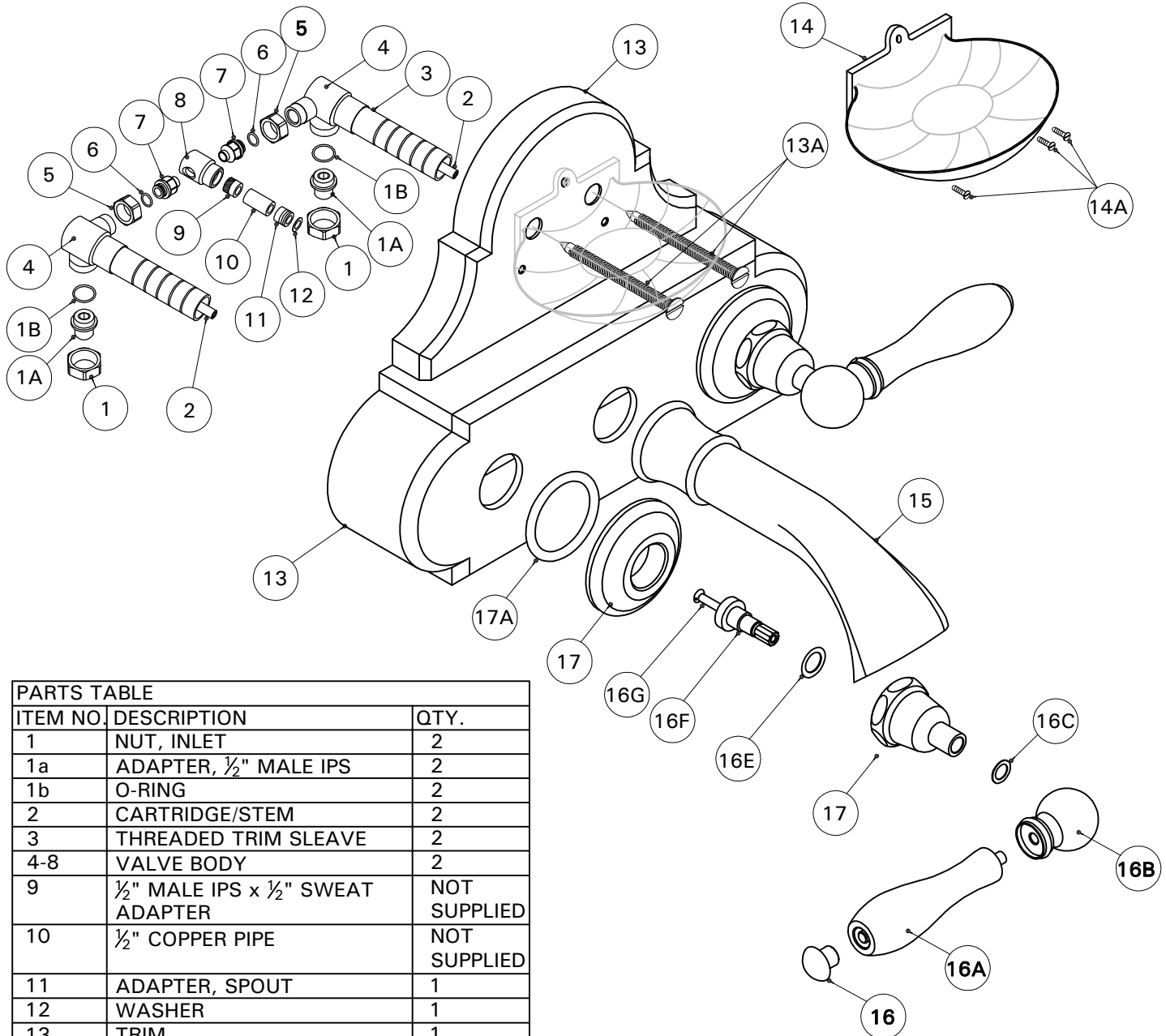
SPOUT INSTALLATION:

18. **IMPORTANT:** Cut the copper pipe exactly 3" beyond the finished wall
19. Unpack the spout and verify the spout adapter (11) is threaded completely into the spout.
20. To verify alignment of the spout and adapter, make a mark at 12:00 that extends from the spout (15) onto the adapter (11).
21. Unthread the spout adapter from the spout then slide the adapter onto the copper pipe so the face of the adapter is flush with the copper pipe. The copper pipe must not protrude past the face of the adapter.
22. After verifying fit, make sure the mark made in step 20 remains at 12:00 then sweat the adapter onto the copper pipe (10-not supplied). If it is not aligned, the spout will not thread on completely and cause a leak or not align properly so the spout tip points down at 6:00.
23. Allow the adapter (11) to cool then wrap it with Teflon tape.

FINAL TRIM INSTALLATION:

24. Secure the trim (13) to the wall using the 2 screws (13a) provided.
25. Reattach the soap dish.
26. Thread the flat escutcheons onto the threaded sleeves to secure the trim to the wall then thread the handles onto the threaded sleeves (3).
27. Make sure the washer (12) is fully inserted into the spout (15) then thread the adapter into the spout.
28. Verify installation and function of the valve.

If further assistance is required, please contact Product Support at 1-800-927-2120 (8am-7pm EST)



PARTS TABLE

ITEM NO.	DESCRIPTION	QTY.
1	NUT, INLET	2
1a	ADAPTER, ½" MALE IPS	2
1b	O-RING	2
2	CARTRIDGE/STEM	2
3	THREADED TRIM SLEEVE	2
4-8	VALVE BODY	2
9	½" MALE IPS x ½" SWEAT ADAPTER	NOT SUPPLIED
10	½" COPPER PIPE	NOT SUPPLIED
11	ADAPTER, SPOUT	1
12	WASHER	1
13	TRIM	1
13A	TRIM SCREWS	1
14	SOAP DISH	1
14A	SCREWS	3
15	SPOUT	1
16	HANDLE END CAP	2
16A	HANDLE, LEVER	2
16B	HANDLE BASE	2
16C	WASHER	2
16D	BELL ESCUTCHEON	2
16E	WASHER	2
16F	ADAPTER, SPLINE	2
16G	SCREW	2
17	FLAT ESCUTCHEON	2
17A	ESCUTCHEON GASKET	2

Notes:

9 - ½" male IPS x ½" sweat adapter, not supplied

10 - ½" copper pipe, not supplied

11 - spout adapter

These guidelines have been prepared for the professional contractor to aid in the installation of:
ETOILE WALL MOUNTED FLARED SPOUT TUB FILLER (ETTU45 & GUSV90ET)
 All dimensions are based on original specification and are subject to change and variation. Please consult your Design Associate for current specifications.

W A T E R W O R K S