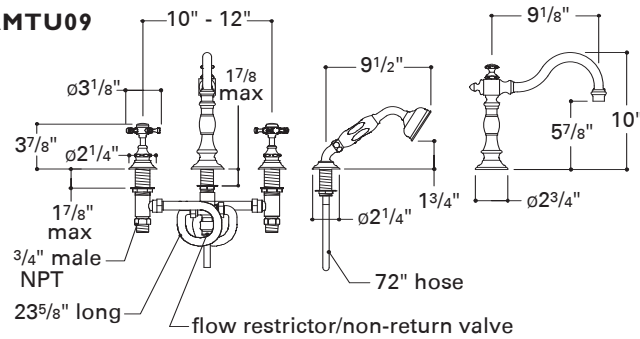
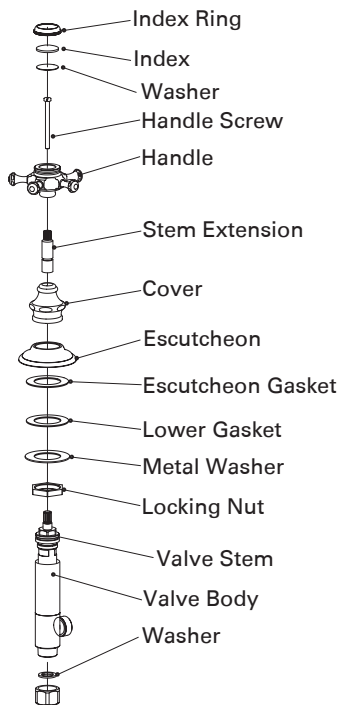
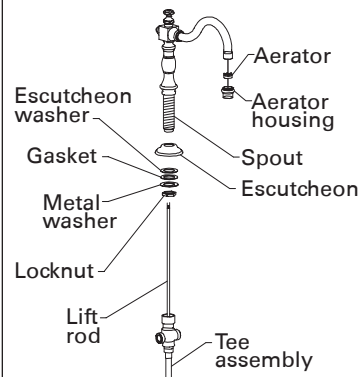
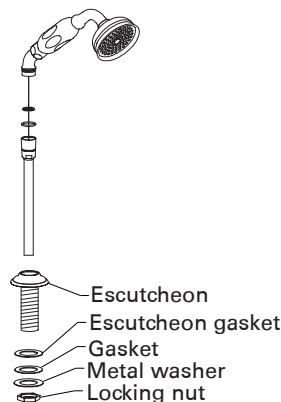


AMTU09**Notes:**

- Drilling hole sizes:
spout and handshower: 1 1/4"
side valves: 1 1/2"
- Must have an access panel for servicing
- Consult your local building codes for anti-scald requirements

Figure 1**Figure 2****Figure 3****NOTES**

- Use only a protected, smooth-jawed, or strap wrench on any finished surface.
- For proper installation, the deck surface should be installed prior to mounting the mixer.
- It is recommended that an access panel be provided for future servicing.
- Check the specifications (left) for drilling hole sizes.
- Run 3/4" supply lines for maximum water flow.
- Accessible shut-off valves, which will facilitate servicing, are recommended for the hot and cold feed lines.
- DO NOT use putty on deck fittings. Upper gaskets are provided.

INSTALLATION

- To remove the trim from the valve body, unscrew the metal index ring and remove the porcelain index and washer exposing the handle screw (fig. 1).
 - Loosen and remove the handle screw and the cross handle. Then remove the stem extension, cover, and escutcheon.
 - Insert the valve body through the mounting hole and screw the escutcheon and cover down until the cover is fully seated. Then, tighten the bottom locking-nut to secure the valve to the deck. Repeat for the other valve assembly.
 - Re-attach the handle trim assemblies.
 - Remove the locking nut, gasket and tee assembly from the spout shank and insert spout through the mounting hole. Please note that the diverter lift knob must be unthreaded before removing the tee assembly. (see fig. 2).
 - Re-attach the locking nut and gasket to spout shank and tighten until spout is fully secured. Then re-attach the tee assembly and diverter lift knob.
 - Install the flexible supply hoses between the valve bodies and the tee assembly.
- MOUNTING THE HANDSHOWER ESCUTCHEON (see fig. 3)**
- Remove the locking nut and gaskets from the handshower escutcheon assembly, and insert through the mounting hole. Then, re-attach and tighten the locking nut until fully secured.
 - Connect the knurled end of the hose to the bottom of the tee assembly using the gasket supplied.
 - Connect the hot and cold water supplies to the side valve bodies.
 - After installation, unscrew and remove the aerator assembly. Carefully open the hot and cold valves fully to flush out any debris in the supply lines. Once the lines have been flushed, close the valves and re-install the aerator assembly.
 - **IMPORTANT:** Check for leaks and ensure the unit is functioning properly before closing the access panel.
 - If further assistance is required, please contact Product Support at: 1-800-927-2120 (8AM-7PM EST).