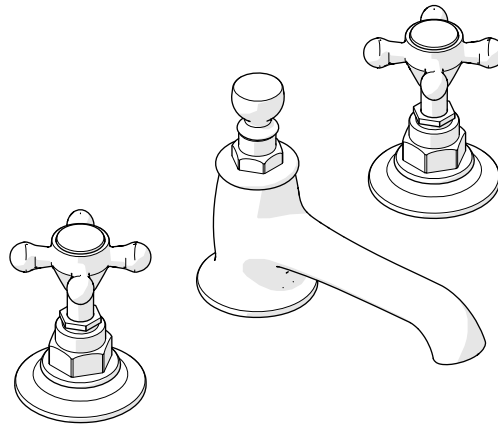


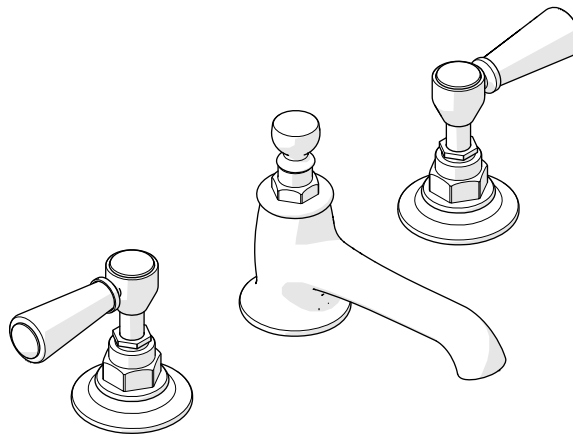
WATERWORKS STUDIO

SERVICE PARTS



STYLE HGLS01

Highgate Low Profile Three Hole Deck Mounted Lavatory Faucet
with Metal Cross Handles



STYLE HGLS10

Highgate Low Profile Three Hole Deck Mounted Lavatory Faucet
with White Porcelain Lever Handles

WELCOME TO

WATERWORKS STUDIO

Over thirty years of experience distilled into signature fittings, surfaces, textiles, and accessories. Waterworks Studio is an edited collection of design solutions curated to be concise, engineered to be complete, and crafted for quality.

Everything you need, nothing more.

**TO ORDER PARTS CALL
1 (800) 927-2120 (EXT 2)**

Order by part number and specify color, finish, or other options if required.

Product Support

Our Product Support team provides troubleshooting and technical problem resolution, including replacement parts and installation recommendations throughout the life of your product.

Product Support is available Monday through Friday 8AM to 6PM EST.

**LIMITED LIFETIME
WARRANTY**

Our warranty covers repair and replacement of Waterworks products if within the applicable coverage period and deemed defective by Waterworks. Waterworks will, at its option, repair or replace such products; this does not include installation costs, labor charges, or other incidental or consequential costs.

To obtain your complete warranty or inquire about warranty service, please visit us at www.waterworks.com or contact our Product Support Team.

MAIN KITS

103588*

CROSS HANDLE KIT WITH HOT INDICE

103583*

LEVER HANDLE KIT
WITH HOT INDICE

103585*

VALVE ESCUTCHEON KIT

846110

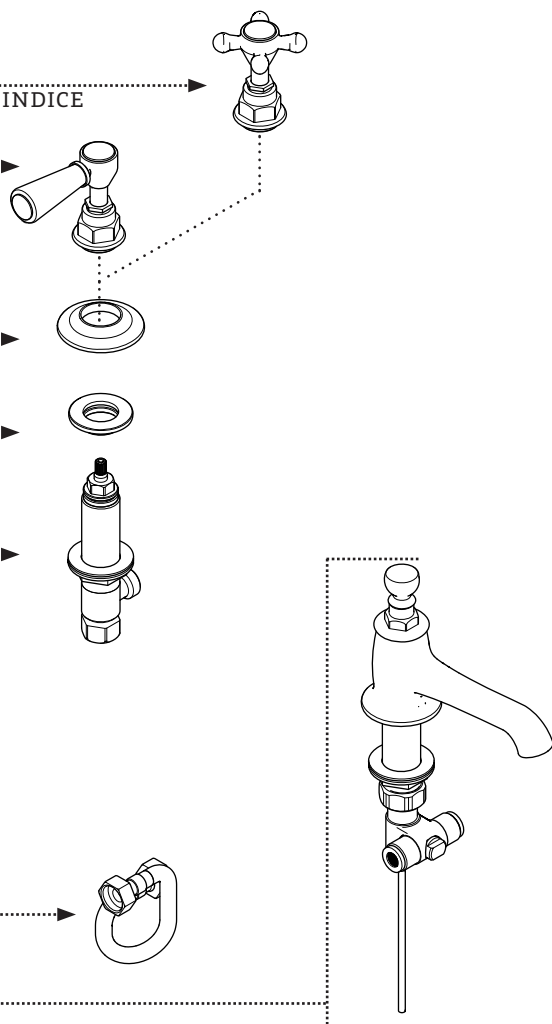
HANDLE TRIM
CONNECTOR KIT

523097

COUNTERCLOCKWISE
ON SIDE BODY KIT

973088++
HOSE KIT

103584*
SPOUT KIT



*FINISH/COLOR MUST BE SPECIFIED WHEN ORDERING
++SUPPLIED AS A PAIR

103587*

CROSS HANDLE KIT WITH COLD INDICE

103582*

LEVER HANDLE KIT
WITH COLD INDICE

103585*

VALVE ESCUTCHEON KIT

846110

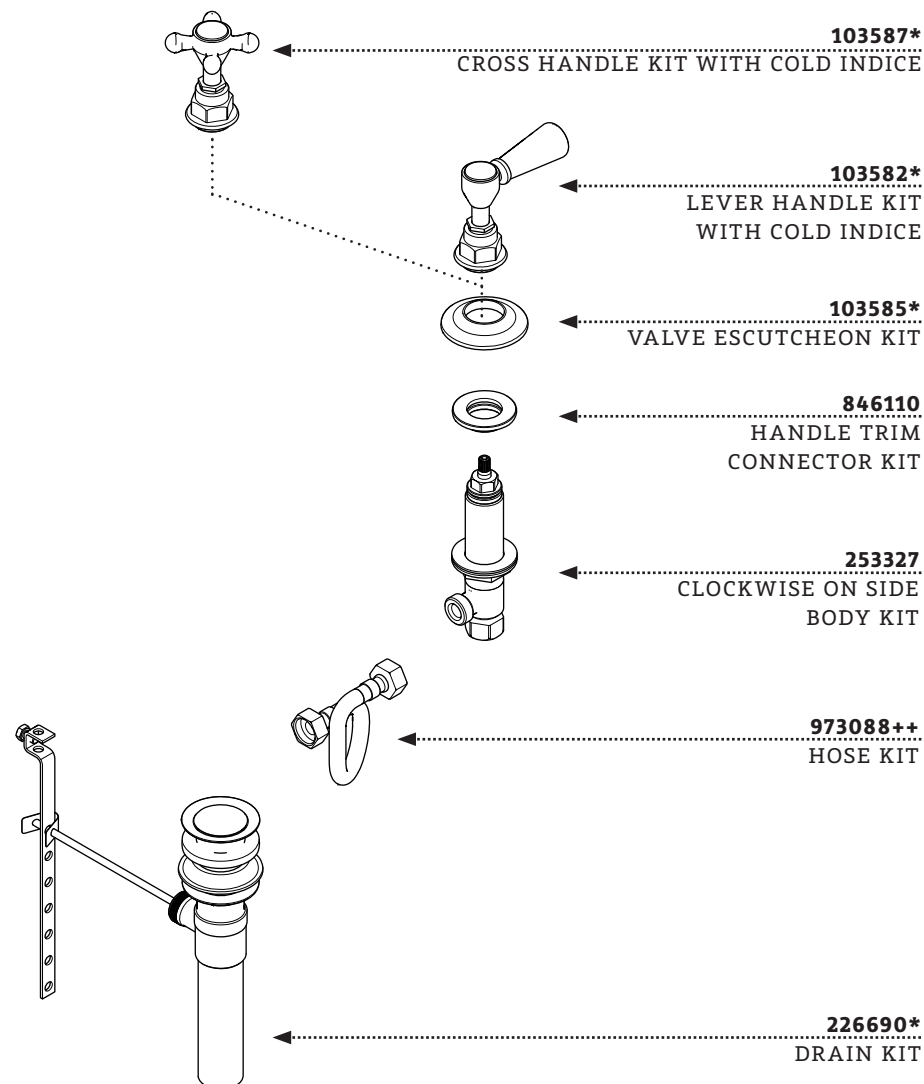
HANDLE TRIM
CONNECTOR KIT

253327

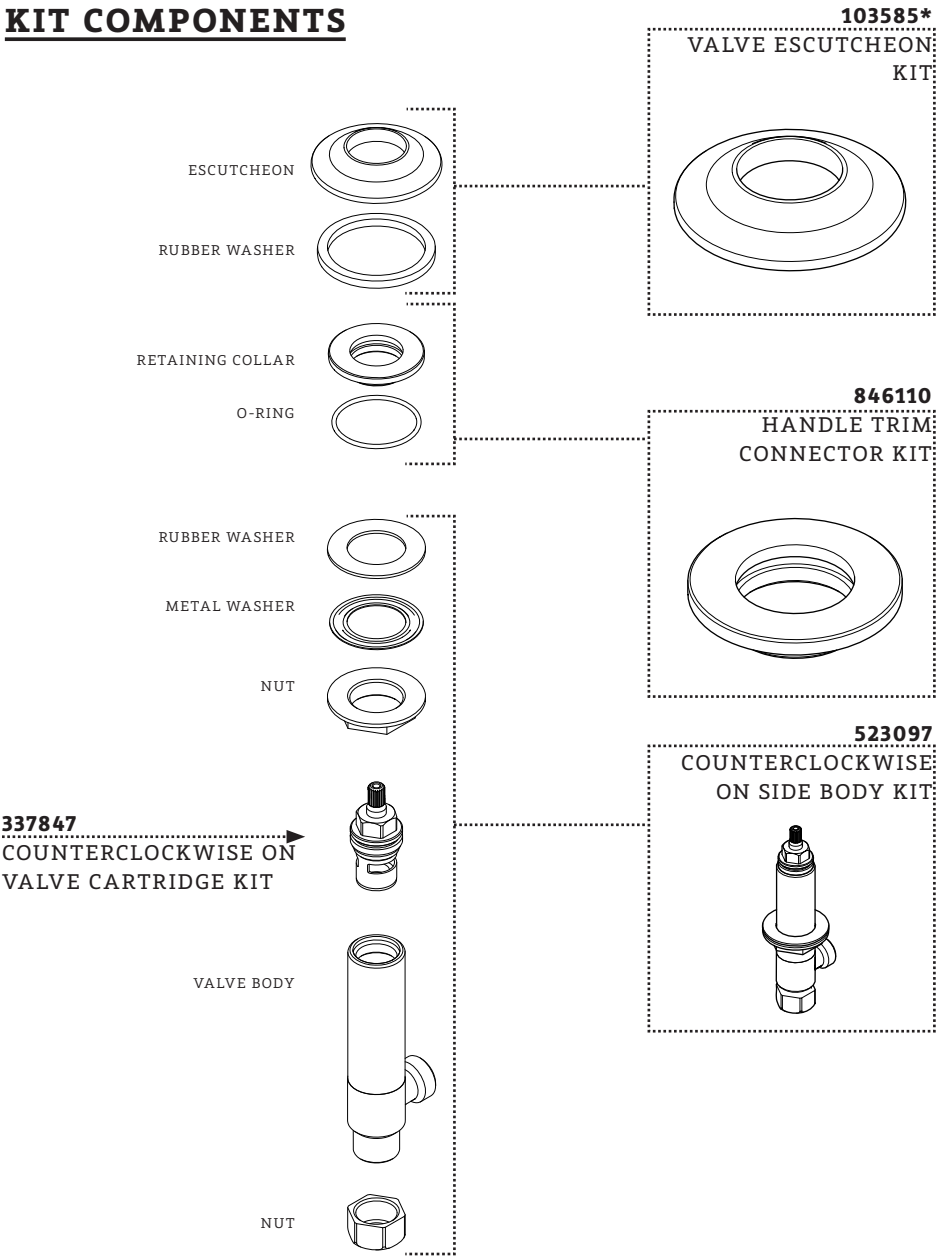
CLOCKWISE ON SIDE
BODY KIT

973088++
HOSE KIT

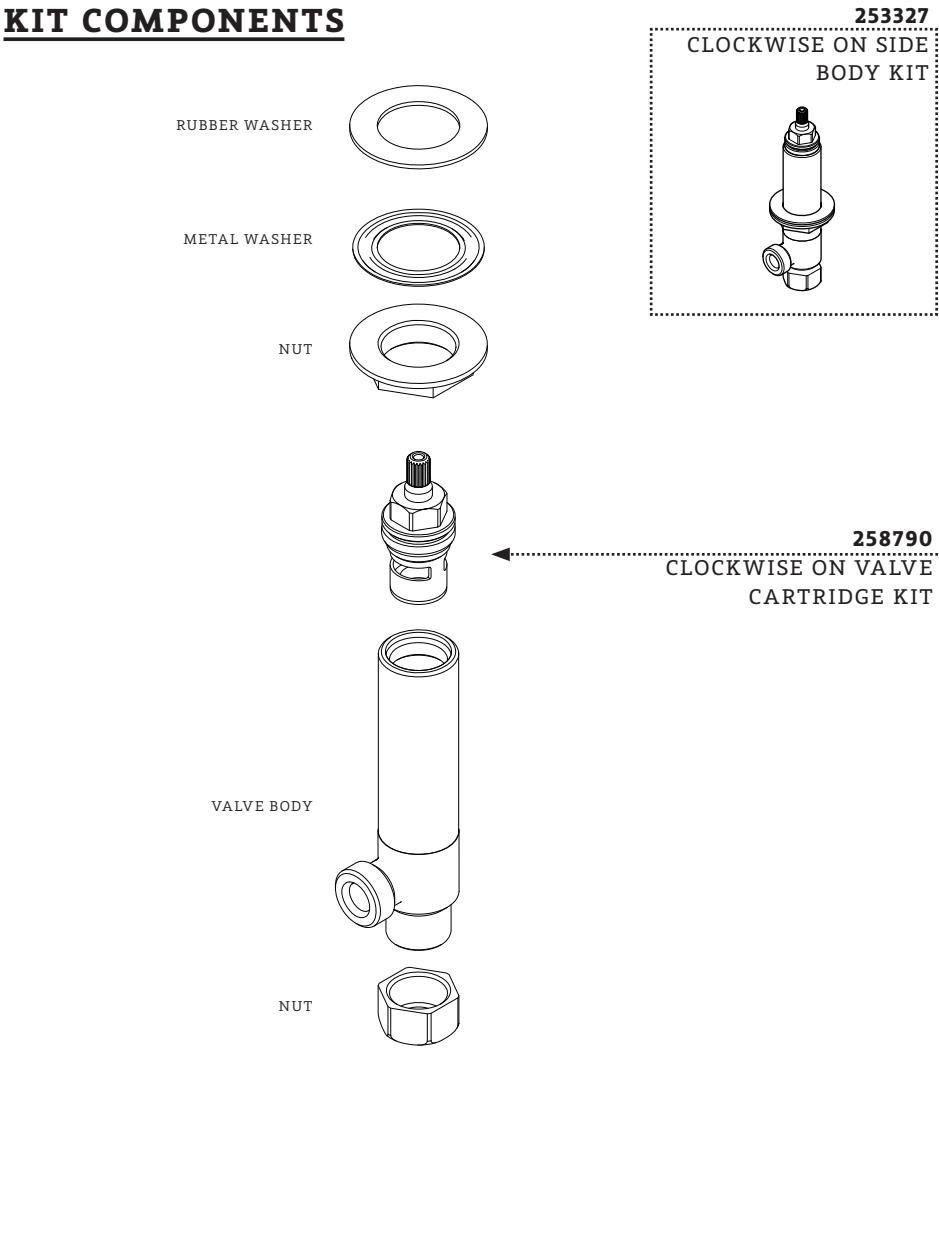
226690*
DRAIN KIT



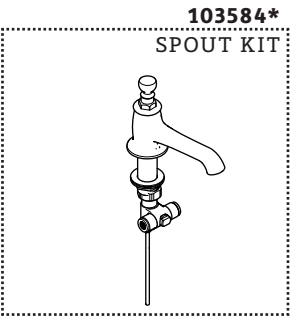
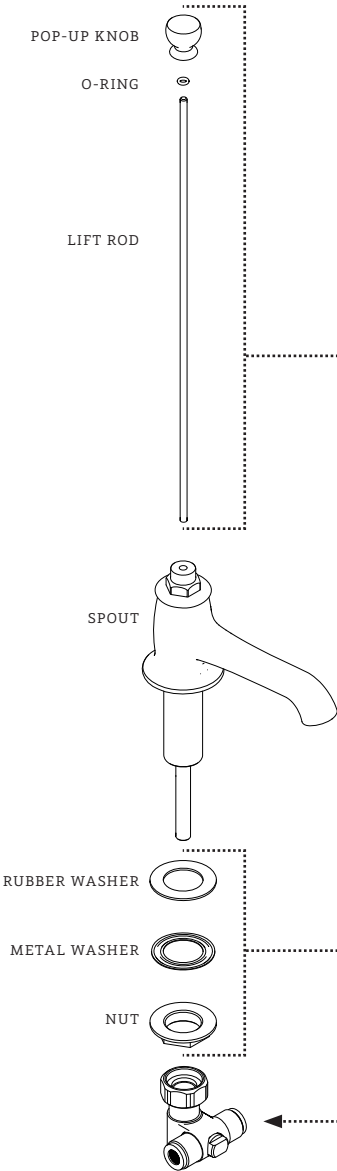
KIT COMPONENTS



KIT COMPONENTS



KIT COMPONENTS



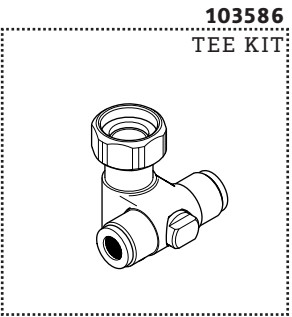
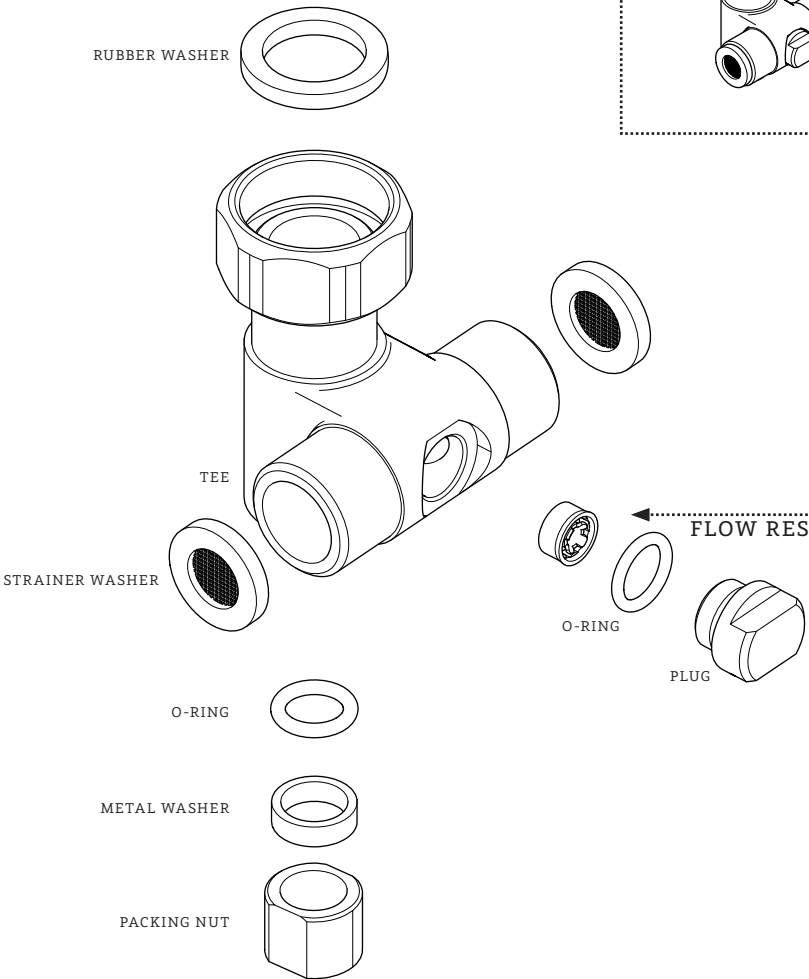
103581*
LIFT ROD KIT

103615
SPOUT FASTENING KIT

103586
TEE KIT

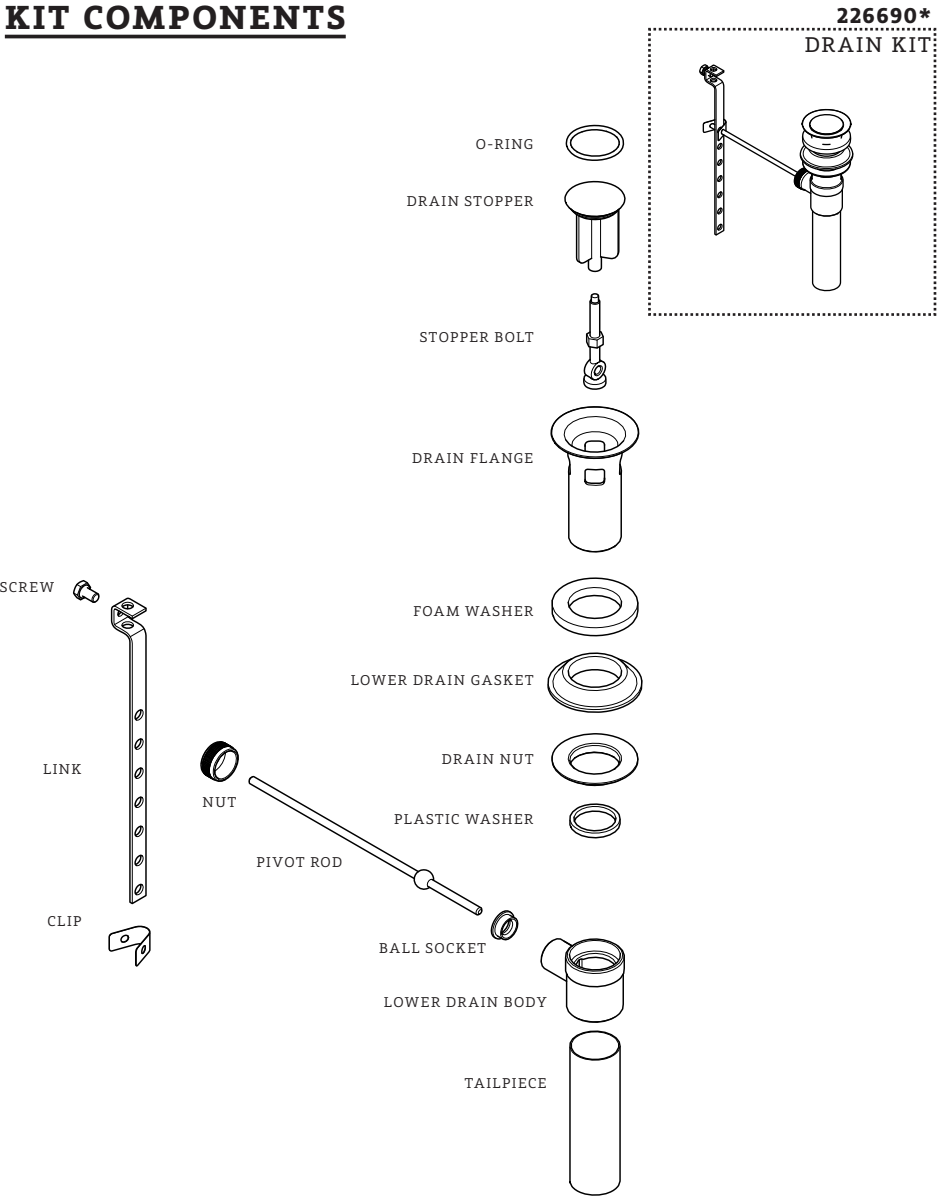
*FINISH/COLOR MUST BE SPECIFIED WHEN ORDERING
++SUPPLIED AS A PAIR

KIT COMPONENTS



103589
FLOW RESTRICTOR
KIT

KIT COMPONENTS



*FINISH/COLOR MUST BE SPECIFIED WHEN ORDERING
++SUPPLIED AS A PAIR

SERVICE PARTS INDEX

STYLE	DESCRIPTION	PG
253327	CLOCKWISE ON SIDE BODY KIT	5
258790	CLOCKWISE ON VALVE CARTRIDGE KIT	5
523097	COUNTERCLOCKWISE ON SIDE BODY KIT	4
337847	COUNTERCLOCKWISE ON VALVE CARTRIDGE KIT	4
103587*	CROSS HANDLE KIT WITH COLD INDICE	3
103588*	CROSS HANDLE KIT WITH HOT INDICE	2
226690*	DRAIN KIT	8
103589	FLOW RESTRICTOR KIT	7
846110	HANDLE TRIM CONNECTOR KIT	4
973088++	HOSE KIT	2
103582*	LEVER HANDLE KIT WITH COLD INDICE	3
103583*	LEVER HANDLE KIT WITH HOT INDICE	2
103581*	LIFT ROD KIT	6
103615	SPOUT FASTENING KIT	6
103584*	SPOUT KIT	6
103586	TEE KIT	7
103585*	VALVE ESCUTCHEON KIT	4



WATERWORKS
STUDIO

PRODUCT SUPPORT
60 BACKUS AVENUE
DANBURY, CT 06810
1 (800) 927-2120 (EXT 2)
WWW.WATERWORKS.COM/STUDIO