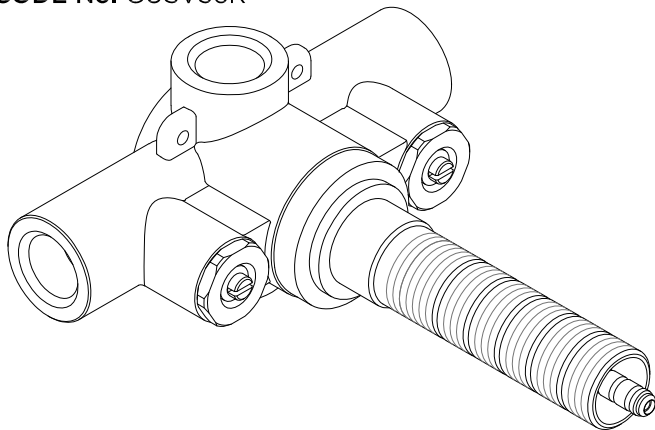


STYLE No. GUTH56
CODE No. GUSV56R



SPECIFICATIONS:

Anti-scald Protection: Yes
Fittings Hole Diameter: 4 1/2"
Hot Limit Safety Stop: Yes
Inlet Connection Size: 1/2"
Inlet Connection Type: Female NPT
Maximum Water Pressure: 80psi
Minimum Water Pressure: 20psi
Outlet Connection Size: 1/2"
Outlet Connection Type: Female NPT
Recommended Water Pressure: 45psi
Unrestricted Maximum Flow at 45psi: 7gpm
Valve Material: Wax Element

IMPORTANT:

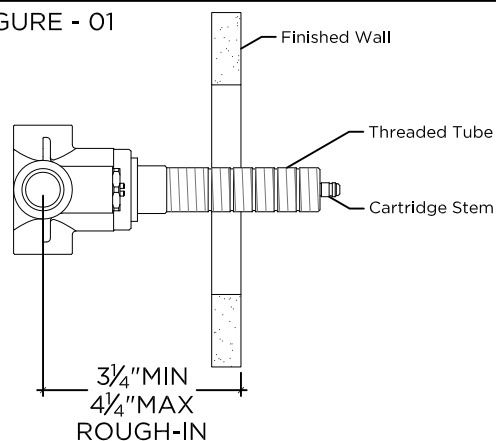
- To ensure this product is installed properly, you must read and follow these guidelines.
- The owner/user of this product must keep this information for future reference.
- This valve includes integrated service stops. Make sure the tile guard is in place.
- This valve features anti-scald protection. The risk of scalding exists until the installer has properly calibrated/adjusted the temperature setting prior to final trim installation.
- This product must be installed by a professional licensed contractor.
- Be sure your installation conforms to all federal, state, and local codes.
- In the State of Massachusetts, all installations must comply with the rules and regulations set forth within 248 CMR.
- Refer to the specification and assembly drawings attached. Product is sold partially assembled but shown fully disassembled for illustrative and service purposes only.

- **DO NOT APPLY DIRECT HEAT TO THE VALVE.** Pre-solder any connections to prevent damage to the cartridge and service stop seals.
- The trim should be on-site prior to rough-in. This allows the installer to visualize the installation.
- **This thermostatic valve only mixes hot and cold water. It does not have volume control or shut-off capabilities. A diverter or wall valve (sold separately) control on/off/volume and must be installed for each fitting that will have water flowing to it. This valve cannot be used with a diverting tub spout.**
- Insure that the hot and cold supply lines are connected to the valve according to the markings on the valve body: **NO INVERSE CARTRIDGE IS AVAILABLE.**
- Inspect this product to ensure you have all parts required for proper installation.
- Check incoming water pressure.

ROUGH-IN:

- Rough in Depth: 3 1/4"-4 1/4" from center of the inlets to surface of the finished wall.

FIGURE - 01



1. Make sure the valve body (1) is positioned according to valve markings so the inlets are situated with hot piped on the left and cold piped on the right.
2. Run 1/2" hot and cold copper supply lines to the proper height of the valve inlets and be sure to secure all piping and fittings.

Note: The valve body has 4 tabs with holes; 2 of these holes are used to hold the tile guard to the valve body and the other 2 can be used to secure the valve body to adequate blocking.

These guidelines have been prepared for the professional contractor to aid in the installation of:
UNIVERSAL 1/2" THERMOSTATIC VALVE (STYLE No. GUTH56).
All dimensions are based on origin specification and are subject to change and variation.
Please consult your Design Associate for current specifications.

WATERWORKS

3. **DO NOT APPLY DIRECT HEAT TO THE VALVE.**
Pre-solder ½" male NPT adapters prior to threading into the valve body.

4. For each fitting that will have water flowing to it, install a wall valve or diverter valve (both sold separately) at the same rough-in depth and according to the flow direction arrow marked on the wall valve or diverter valve body.

5. The bottom port of the valve body is not plugged and can be used to supply water to other fittings. Install a ½" NPT plug (not supplied) if the port will not be used.

6. Install the tile guard (11).

INSPECT THE INSTALLATION:

7. Turn on the water supply and inspect all connections for leaks.

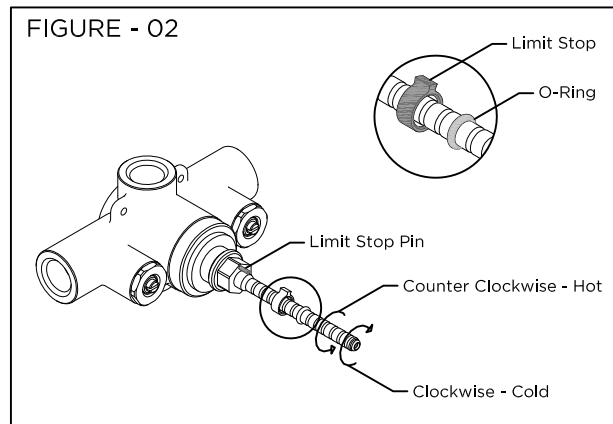
8. Turn off the water supply and turn off the service stops, located on the valve inlets.

9. Install the tile guard.

TEMPERATURE CALIBRATION:

➤ The risk of scalding exists until the installer has properly calibrated/adjusted the temperature setting prior to final trim installation.

10. Remove the tile guard (11) and threaded tube (9). Slide the o-ring (8) and limit stop (7) up the cartridge stem. **DO NOT REMOVE OR DAMAGE THE O-RING.**



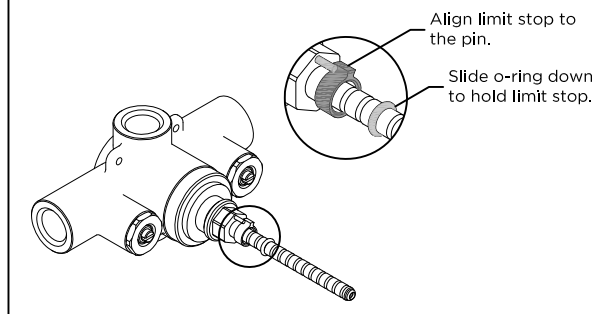
12. Turn on the water supply and a wall valve to run water through the valve.

13. Slowly rotate the cartridge stem clockwise to attain full cold then rotate it counter-clockwise to attain full hot. Verify a full range of temperatures exists.
Note: It is approximately ¾ of a rotation from full cold to full hot.

14. With water running, rotate the cartridge stem to adjust the temperature to the maximum desired bathing temperature, verified with a thermometer.

15. Slide the limit stop (7) back onto the cartridge stem, making sure to properly align it with the pin on the cartridge bonnet. Slide the o-ring (8) back to its originally position to prevent the limit stop from sliding off the stem then turn the water off.

FIGURE - 02



INSPECT THE CALIBRATION:

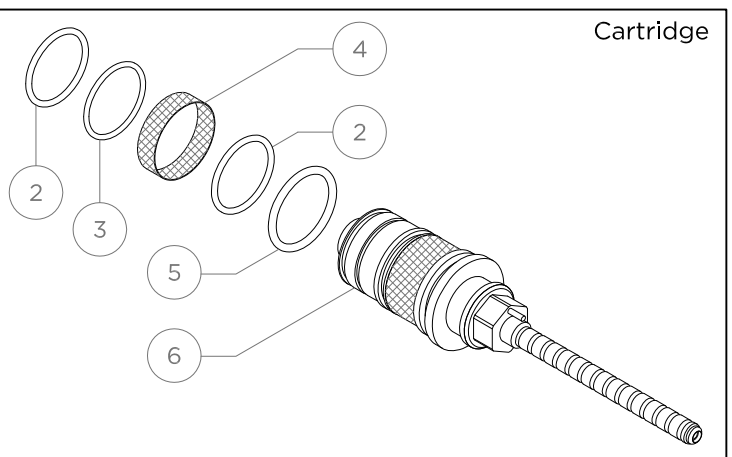
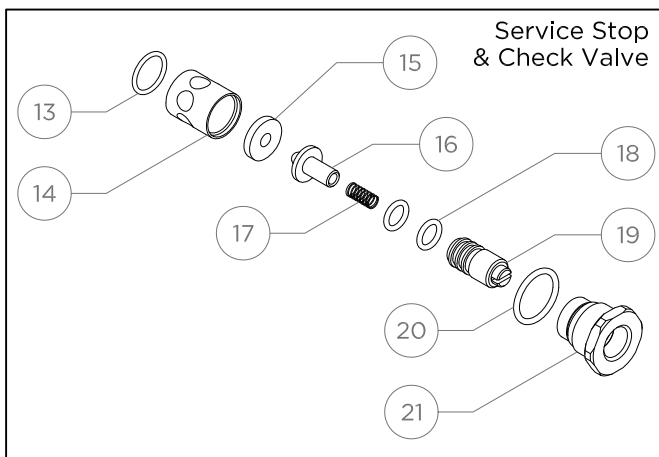
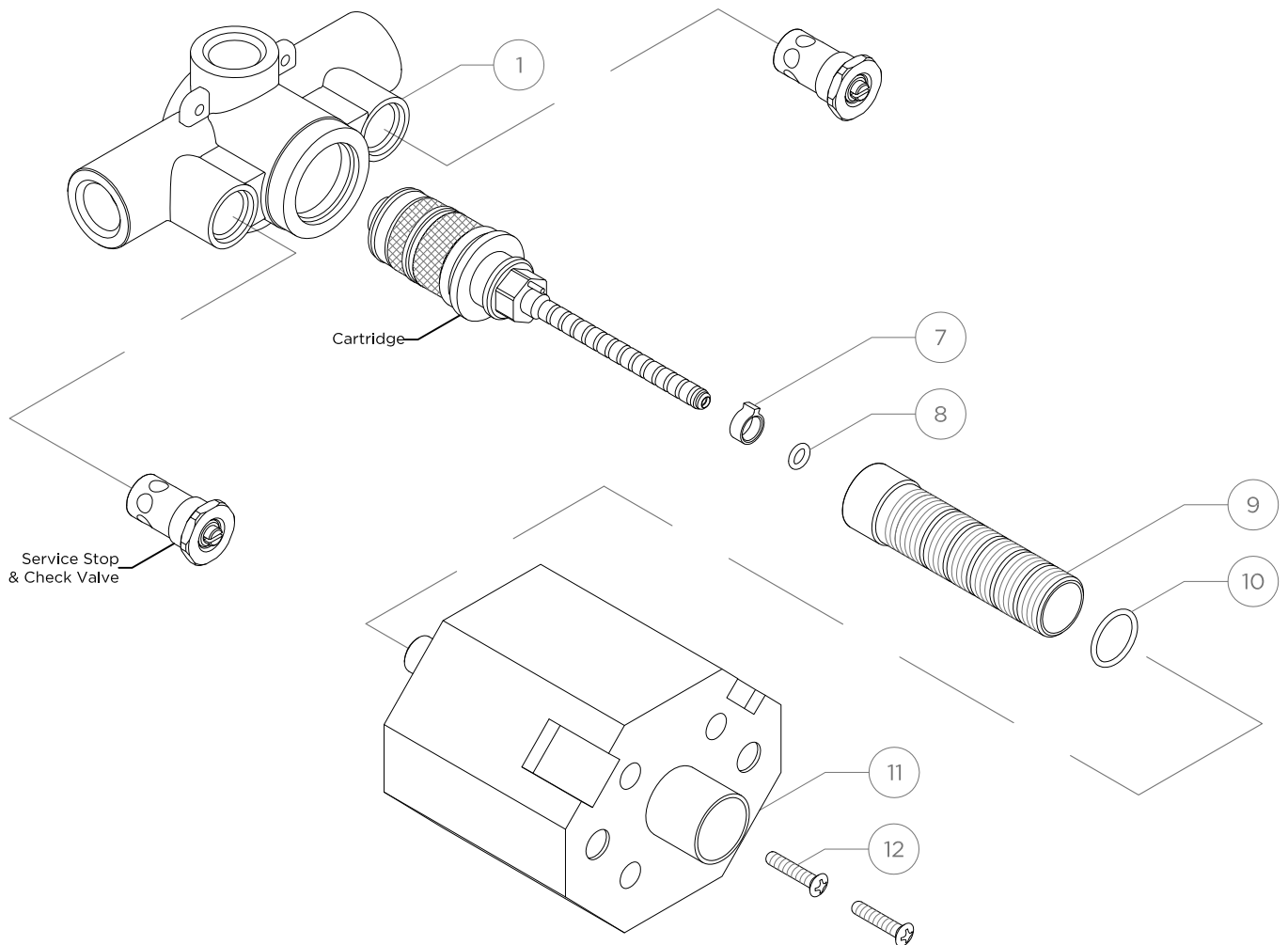
16. Turn the limit stop clockwise then turn the water on and confirm the limit stop is functioning properly by turning it counter-clockwise at which point it should stop.

17. Verify the temperature to be the maximum temperature set in Step 14. If it is not the correct temperature, repeat the calibration procedures.

➤ If further assistance is required, contact Product Support at 1-800-927-2120 (9am-6pm EST).

These guidelines have been prepared for the professional contractor to aid in the installation of:
UNIVERSAL ½" THERMOSTATIC VALVE (STYLE NO. GUTH56).
All dimensions are based on origin specification and are subject to change and variation.
Please consult your Design Associate for current specifications.

WATERWORKS



These guidelines have been prepared for the professional contractor to aid in the installation of:
UNIVERSAL 1/2" THERMOSTATIC VALVE (STYLE NO. GUTH56).
All dimensions are based on origin specification and are subject to change and variation.
Please consult your Design Associate for current specifications.

WATERWORKS

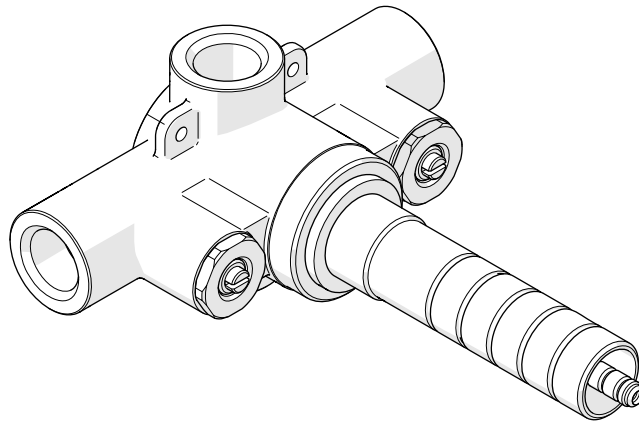
PARTS TABLE		
ITEM NO.	DESCRIPTION	QTY.
1	Valve Body, 1/2" Thermostatic, GUSV56R	1
2	O-Ring, 25mm ID x 2mm Width, Rubber	2
3	O-Ring, 25.1mm ID x 1.8mm Width, Rubber	1
4	Mesh Screen, Metal	1
5	O-Ring, 26.7mm ID x 2.6mm Width, Rubber	1
6	Cartridge, Thermostatic	1
7	Limit Stop, 1/2" Thermostatic Valve	1
8	O-Ring, 6mm ID x 2mm Width, Rubber	1
9	Threaded Tube	1
10	O-Ring, 18.7mm ID x 2.6mm Width, Rubber	1
11	Tile Guard	1
12	Screw	2
13	O-Ring, 14mm ID x 1.5mm Width, Rubber	2
14	Barrel	2
15	Washer, 5mm ID x 15.5mm OD x 2.7mm Thickness, Rubber	2
16	Stem, Service Stop, Plunger	2
17	Spring	2
18	O-Ring, 6.8mm ID x 1.8mm Width, Rubber	4
19	Stem, Service Stop, Slotted	2
20	O-Ring, 8.5mm ID x 2mm Width, Rubber	2
21	Bonnet, Service Stop, 23mm Hex	2

These guidelines have been prepared for the professional contractor to aid in the installation of:
UNIVERSAL 1/2" THERMOSTATIC VALVE (STYLE No. GUTH56).
 All dimensions are based on origin specification and are subject to change and variation.
 Please consult your Design Associate for current specifications.

WATERWORKS

WATERWORKS STUDIO

SERVICE PARTS



GUTH56

Universal 1/2" Thermostatic Valve

WELCOME TO

WATERWORKS STUDIO

Over thirty years of experience distilled into signature fittings, surfaces, textiles, and accessories. Waterworks Studio is an edited collection of design solutions curated to be concise, engineered to be complete, and crafted for quality.

Everything you need, nothing more.

**TO ORDER PARTS CALL
1 (800) 927-2120 (EXT 2)**

Order by part number and specify color, finish, or other options if required.

PRODUCT SUPPORT

Our Product Support team provides troubleshooting and technical problem resolution, including replacement parts and installation recommendations throughout the life of your product.

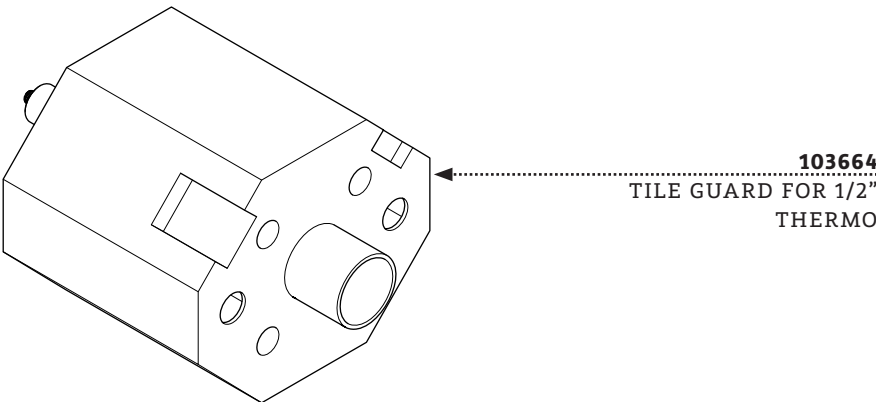
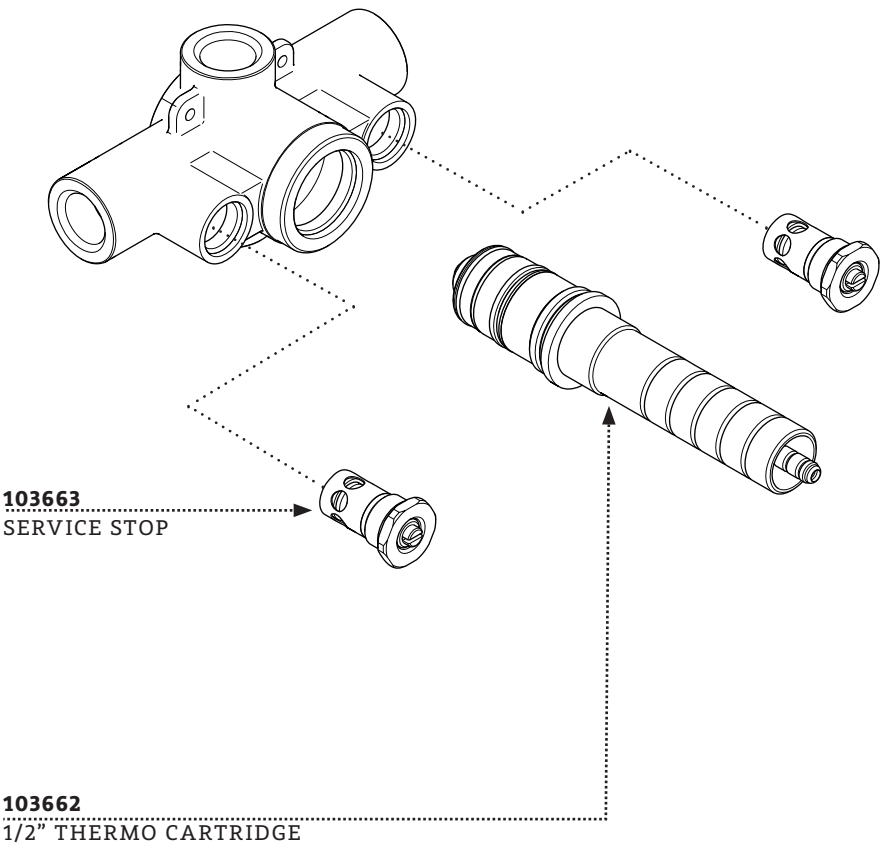
Product Support is available Monday through Friday 8AM to 6PM EST.

**LIMITED LIFETIME
WARRANTY**

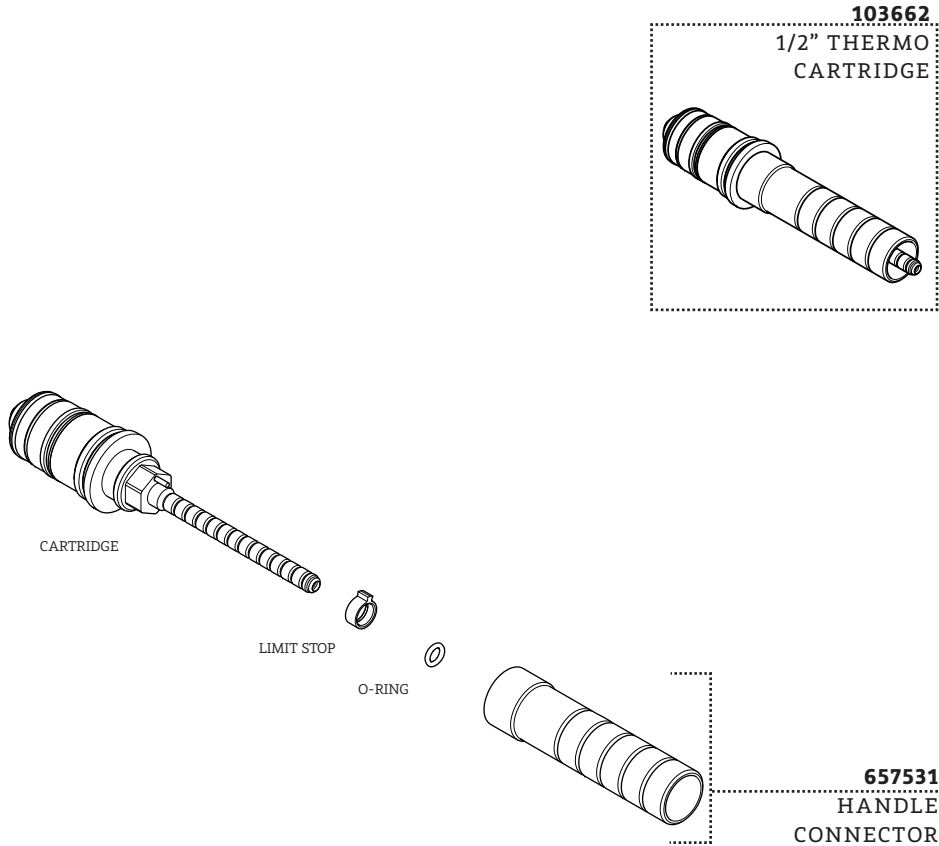
Our warranty covers repair and replacement of Waterworks products if within the applicable coverage period and deemed defective by Waterworks. Waterworks will, at its option, repair or replace such products; this does not include installation costs, labor charges, or other incidental or consequential costs.

To obtain your complete warranty or inquire about warranty service, please visit us at www.waterworks.com or contact our Product Support Team.

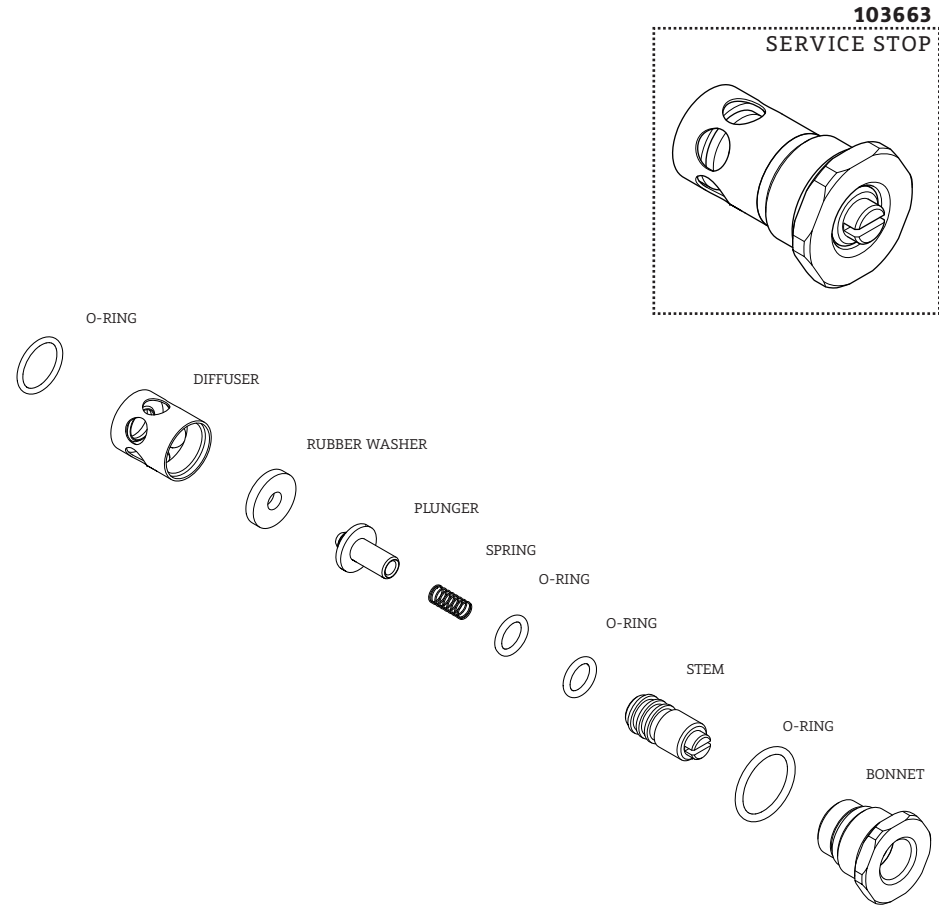
MAIN KITS



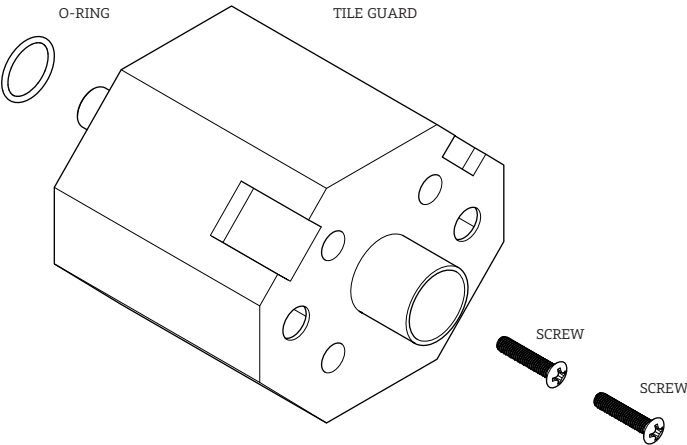
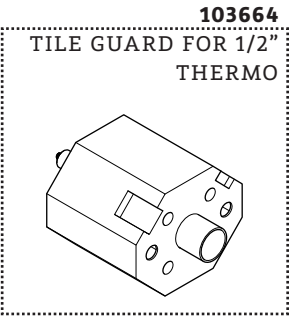
KIT COMPONENTS



KIT COMPONENTS



KIT COMPONENTS



*FINISH/COLOR MUST BE SPECIFIED WHEN ORDERING
++SUPPLIED AS A PAIR

SERVICE PARTS INDEX

<u>STYLE</u>	<u>DESCRIPTION</u>	<u>PG</u>
657531	HANDLE CONNECTOR	4
103662	1/2" THERMO CARTRIDGE	4
103663	SERVICE STOP	5
103664	TILE GUARD FOR 1/2" THERMO	6

NOTES

NOTES



WATERWORKS
STUDIO

PRODUCT SUPPORT

60 BACKUS AVENUE
DANBURY, CT 06810

1 (800) 927-2120 (EXT 2)

WWW.WATERWORKS.COM/STUDIO