

## WATERWORKS

PRODUCT SUPPORT  
800.927.2120  
WATERWORKS.COM

# NAVIGATOR

Wall Mounted Single Arm Sconce with Opal  
Glass Shade in Nickel

**STYLE No.** NALT01

**REFERENCE No.** Reference-Number

**ITEM No.** 18-05007-44959

## SPECIFICATIONS

PAGE 1 OF 3

### DESIGN

Our Navigator  
sconce was inspired  
by cabin steam ship  
travel.

### FEATURES

12  $\frac{3}{8}$ " x 4  $\frac{15}{16}$ " x 4  $\frac{3}{4}$ "

Made of Brass

Wall Mounted

Cylinder Shade



SHOWN IN finish/color

## WATERWORKS

PRODUCT SUPPORT  
800.927.2120  
WATERWORKS.COM

# NAVIGATOR

Wall Mounted Single Arm Sconce with Opal  
Glass Shade in Nickel

**STYLE No.** NALT01

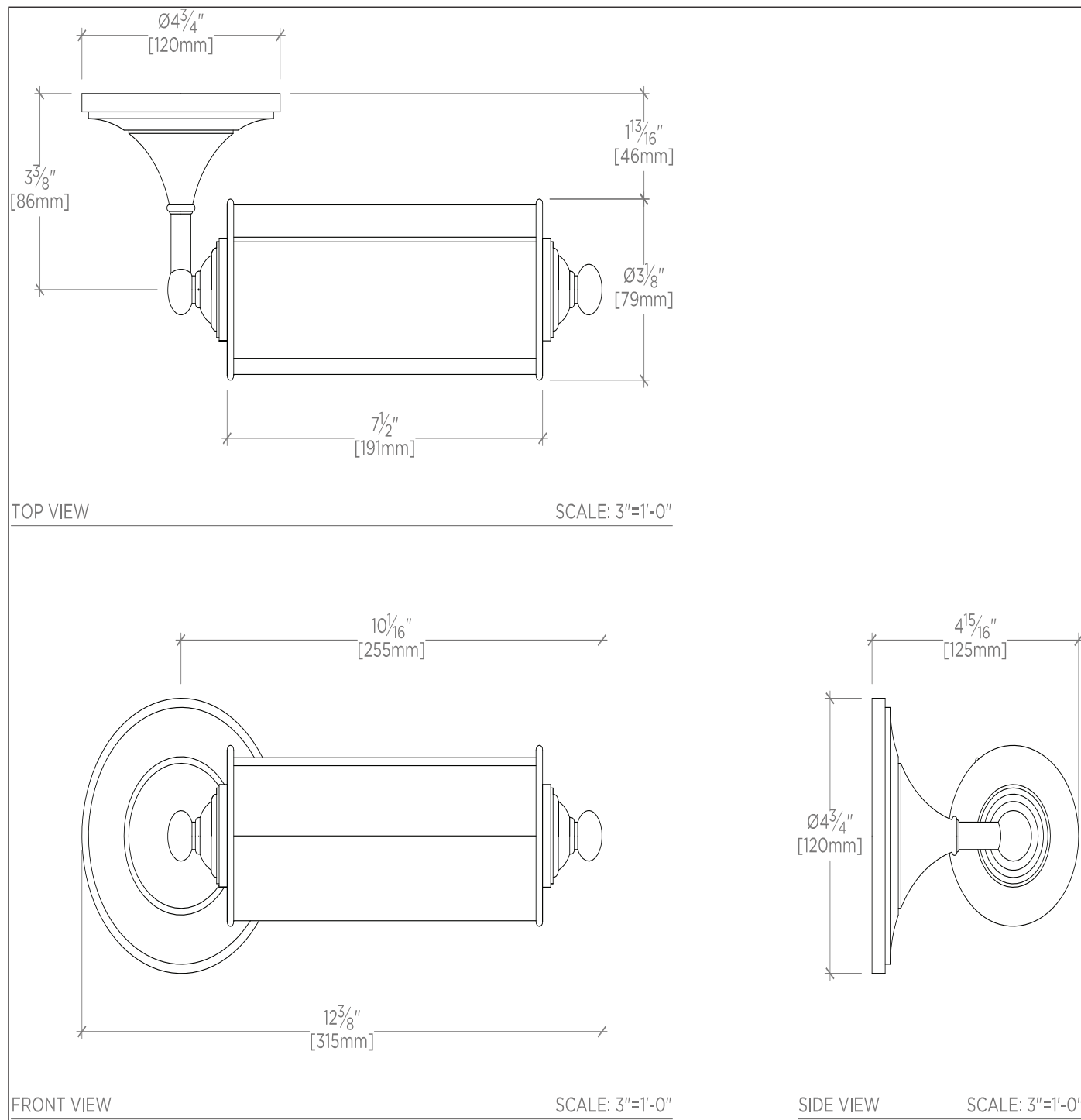
**REFERENCE No.** Reference-Number

**ITEM No.** 18-05007-44959

## SPECIFICATIONS

PAGE 2 OF 3

*All dimensions are based on original specifications and are subject to change and variation. Please consult your Design Associate for current specifications.*



## WATERWORKS

PRODUCT SUPPORT  
800.927.2120  
WATERWORKS.COM

# NAVIGATOR

Wall Mounted Single Arm Sconce with Opal  
Glass Shade in Nickel

**STYLE No.** NALT01

**REFERENCE No.** Reference-Number

**ITEM No.** 18-05007-44959

## SPECIFICATIONS

PAGE 3 OF 3

### SPECIFICATIONS

Primary Material: Brass  
Ambient / Task: Ambient  
Bulb Base Size: Medium E-26  
Bulb Type: 60 watt max incandescent T-10  
(not supplied)  
Electric Requirements:  
Installation Type: Wall Mounted  
Junction Box Orientation: Any  
Junction Box Size (L x W): 3 ½" x 3 ½" Octagonal  
Light Direction:  
Number of Bulbs: One  
Orientation: Any  
Required Electrical Feeds: Black or "Hot" lead wire, white or "Neutral" lead wire and a green or bare copper "Ground" wire.  
Safety Warnings: DO NOT EXCEED MAX WATTAGE  
Shade Finish:  
Shade Fitter Size:  
Shade Material: Glass  
Shade Shape: Cylinder  
Suggested Application:  
Voltage: 120  
Wattage: 60 watts  
Wet / Dry: Damp or Dry

### CARE INSTRUCTIONS

To clean the finish, wipe gently with a soft damp cloth and then with a soft dry towel. A mild soap solution can be used for daily cleaning.

### CODES AND STANDARDS

cUL, UL