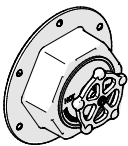


WATERWORKS

INSTALLATION GUIDELINES



STYLE No. RGTH01
Regulator Thermostatic
Control Valve Trim with
Wheel Handle

IMPORTANT:

- To ensure this product is installed properly, you must read and follow these guidelines.
- The owner/user of this product must keep this information for future reference.
- This product must be installed by a professional licensed contractor and must be onsite prior to rough-in, this allows the installer to visualize the installation.
- Be sure your installation conforms to federal state, and local codes. In the State of Massachusetts, all installations must comply with the rules and regulations set forth within 248 CMR.
- This product is intended to work with the Waterworks Universal 3/4" Thermostatic Valve (Style No. GUTH37) which only mixes hot and cold water. It does not have volume or shut-off capabilities. A diverter or wall valve control on/off/volume and must be installed for each fitting that will have water flowing to it. **ALL VALVES AND TRIMS SOLD SEPARATELY.**
- **WARNING:** GUTH37 features anti-scald protection. The risk of scalding exists until the installer has properly calibrated/adjusted the temperature setting during final trim installation.
- Inspect this product to ensure you have all the parts required for proper installation. Product is sold partially assembled but shown fully disassembled for illustrative and service purposed only.
- Use only a strap wrench or protected/smooth-jaw wrench on any finished surface.
- The use of certain plumber's putty may stain stone or tile surfaces.
- If further assistance is required, please contact Product Support at 1-800-927-2120 Monday through Friday, 8am - 6pm EST.
- Refer to the separate Service Parts Documents for available replacement parts.

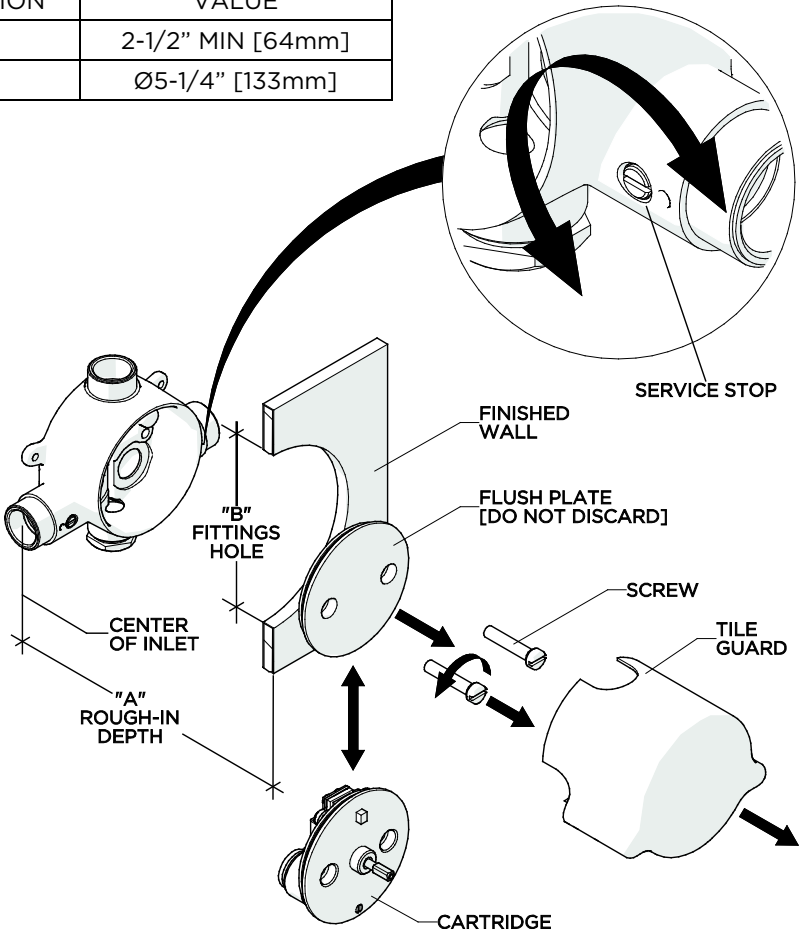
REQUIRED PLUMBING DETAILS:

- Universal 3/4" Thermostatic Valve
STYLE No. GUTH37

ROUGH-IN AND VALVE PREPARATION:

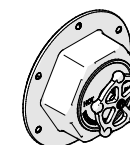
- **CAUTION:** Make sure the supply lines are flushed prior to final trim installation using the FLUSH PLATE provided with the valve. Refer to the Installation Guidelines provided with the valve for further information on how to properly flush the supply lines.

DIMENSION	VALUE
A	2-1/2" MIN [64mm]
B	Ø5-1/4" [133mm]



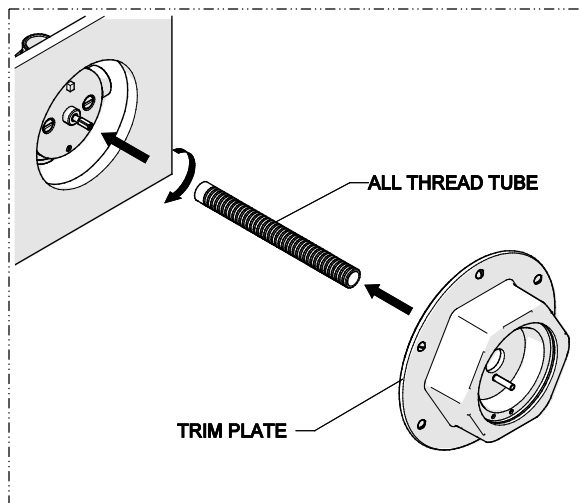
WATERWORKS

INSTALLATION GUIDELINES

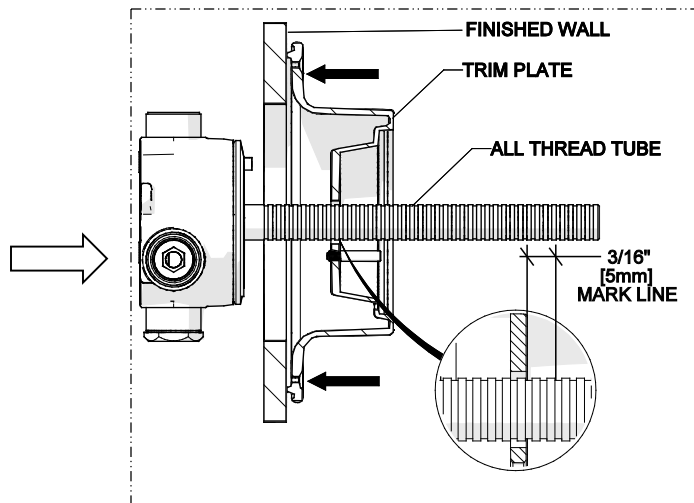


STYLE No. RGTH01

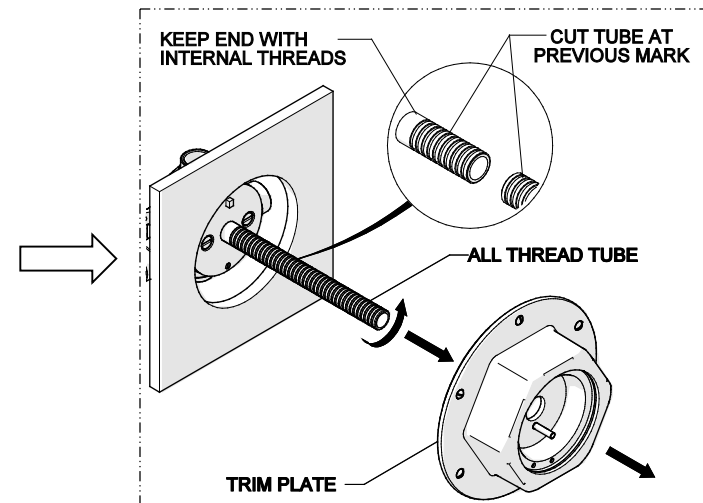
Regulator Thermostatic
Control Valve Trim with
Wheel Handle



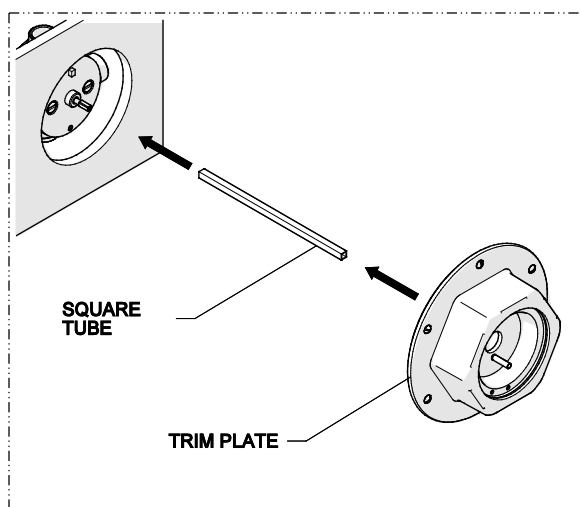
1. Thread the ALL THREAD TUBE onto the CARTRIDGE then slide the TRIM PLATE over the TUBE.



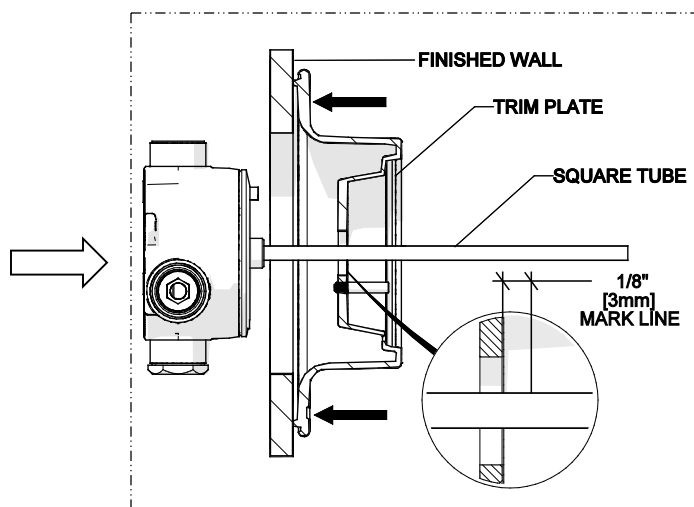
2. Firmly holding the PLATE against the finished wall, mark the TUBE 3/16" [5mm] beyond where it protrudes from the PLATE.



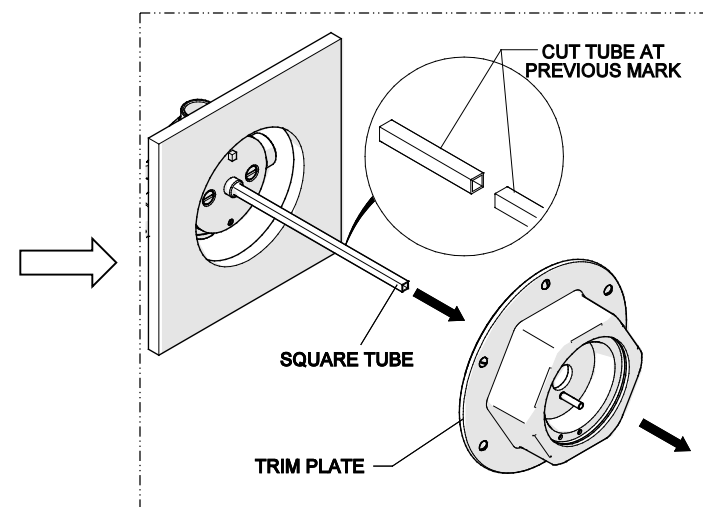
3. Remove the TRIM PLATE and ALL THREAD TUBE then cut the TUBE at the previous mark. Keep the end with the internal threads.



4. Insert the SQUARE TUBE onto the CARTRIDGE making sure it is fully seated then slide the TRIM PLATE over the TUBE.



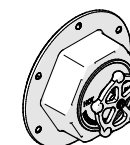
5. Holding the TRIM PLATE against the finished wall mark the SQUARE TUBE 1/8" [3mm] beyond where it protrudes from the PLATE.



6. Remove the TRIM PLATE and SQUARE TUBE then cut the TUBE at previous mark.

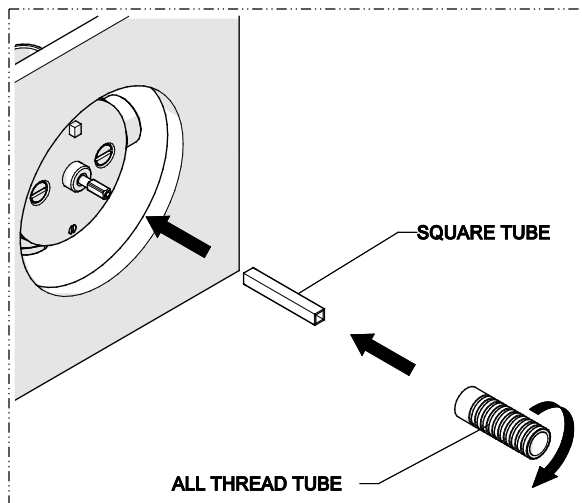
WATERWORKS

INSTALLATION GUIDELINES

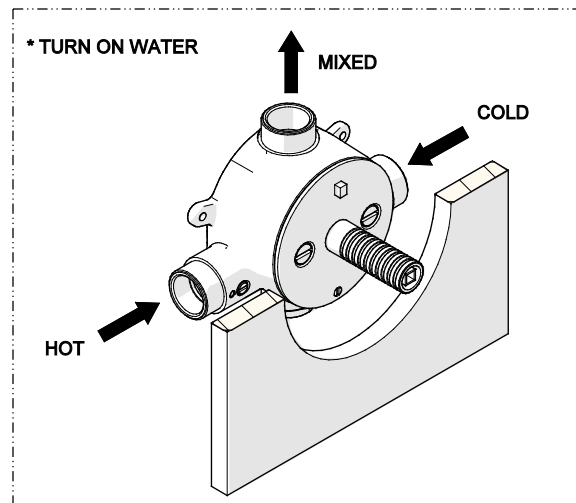


STYLE No. RGTH01

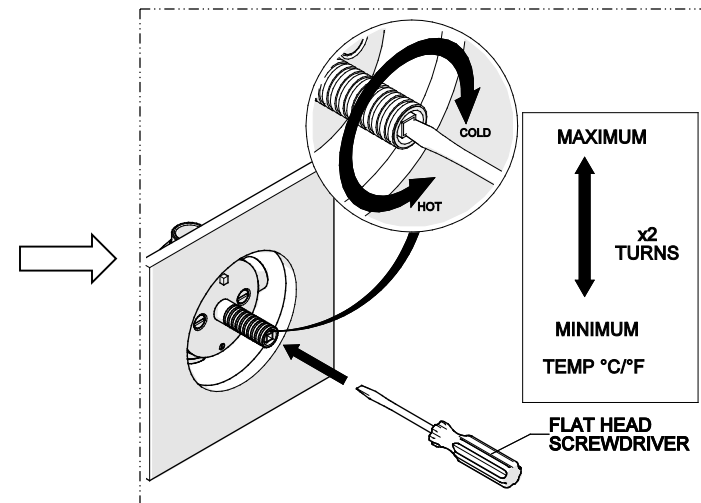
Regulator Thermostatic Control Valve Trim with Wheel Handle



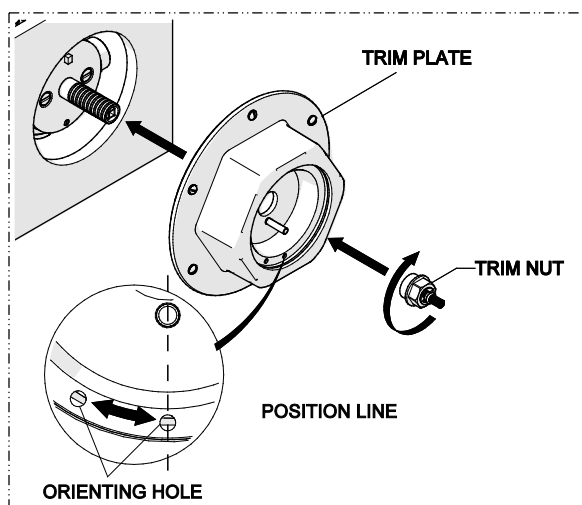
7. Re-insert the THREADED TUBE and SQUARE TUBE back onto the VALVE making sure it is slight recessed.



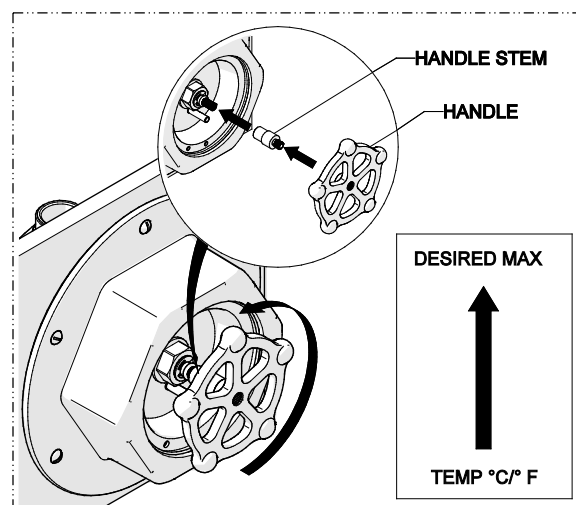
8. Run water through the VALVE and insert a bladed screw driver into the SQUARE TUBE. Slowly rotate the TUBE clockwise to attain full cold then



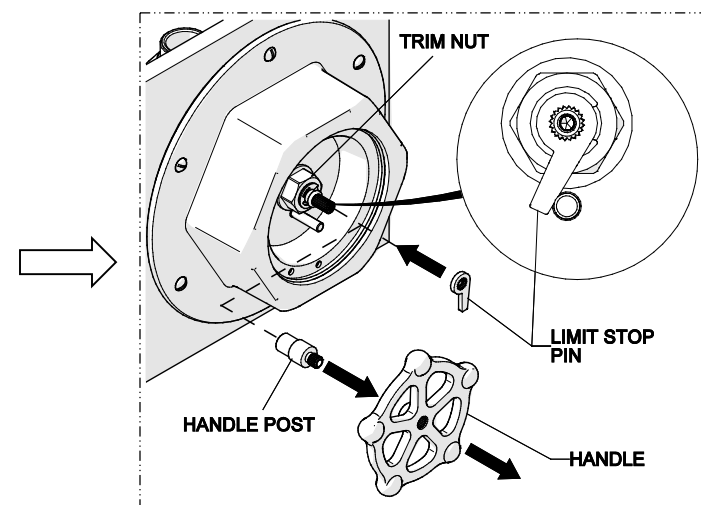
counterclockwise to attain full hot. It's approximately 2 complete rotations. Verify a full range of temperatures exists.



9. Slide the TRIM PLATE over the THREADED TUBE then firmly holding the PLATE against the finished wall in the desired orientation, thread and securely tighten the TRIM NUT onto the TUBE.
NOTE: Make sure an orienting hole on TRIM PLATE is in the 6 o'clock position prior to securing TRIM NUT.



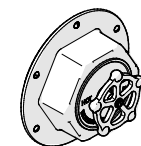
10. Place the HANDLE POST and HANDLE onto the TRIM NUT. With water running, rotate the HANDLE to adjust the temperature to the maximum desired bathing temperature, verified with a thermometer. Turn the water off and make sure not to change this setting.



11. Remove the HANDLE and the HANDLE POST. Place the LIMIT STOP PIN onto the TRIM NUT in the orientation shown making sure that the SQUARE TUBE is still set to the desired max temperature.

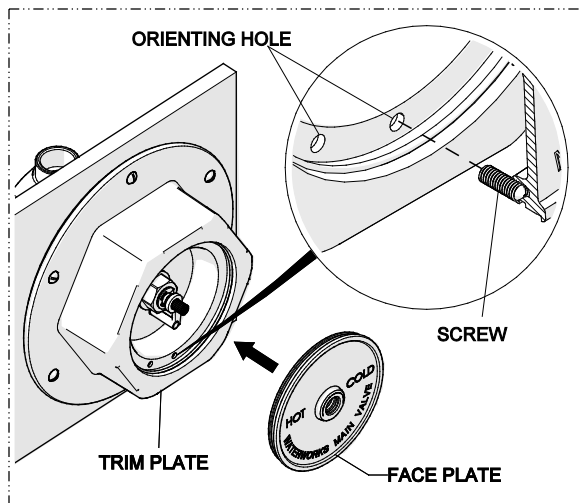
WATERWORKS

INSTALLATION GUIDELINES

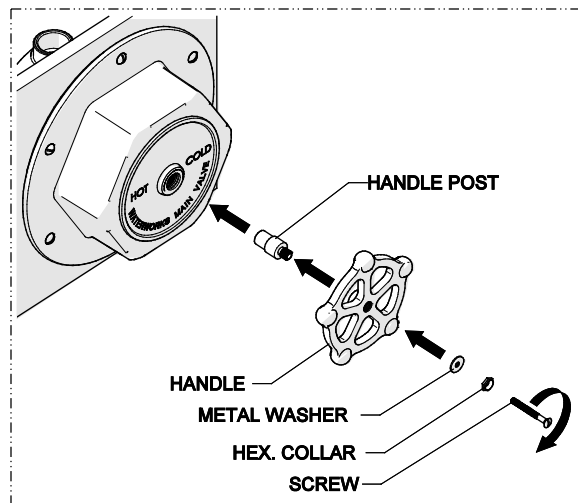
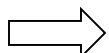


STYLE No. RGTH01

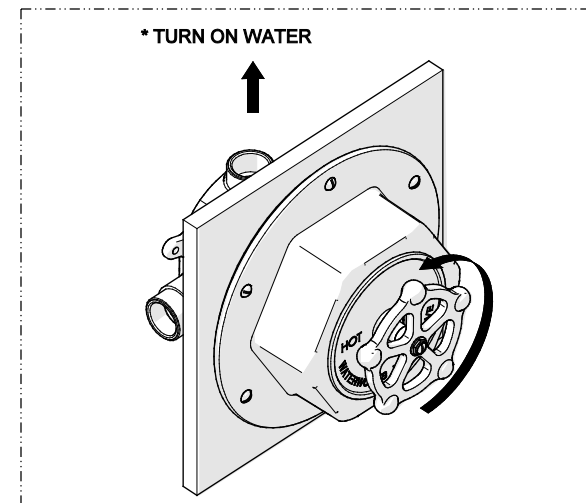
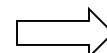
Regulator Thermostatic
Control Valve Trim with
Wheel Handle



12. Insert the FACE PLATE into the TRIM PLATE, making sure that the PLATE is fully seated, and that the SCREW is aligned with the correct orienting hole. Verify that the text on the FACE PLATE is level.



13. Insert the HANDLE STEM through the FACE PLATE, and onto the TRIM NUT, then place the HANDLE on the HANDLE STEM in the desired orientation. Securely tighten the SCREW being sure to include the METAL WASHER and the HEX COLLAR.



14. Turn on the water supply and operate the HANDLE to ensure that it is functioning properly.