

## WATERWORKS

PRODUCT SUPPORT  
800.927.2120  
WATERWORKS.COM

# NORMANDY

Hammered Copper Oval Overmount /  
Undermount Lavatory 15 3/8" x 10 5/8" x 7" in  
Chrome

**STYLE No.** NOLV35

**REFERENCE No.** NOLV35C

**ITEM No.** 11-44273-68597

**SPECIFICATIONS**  
PAGE 1 OF 3

### DESIGN

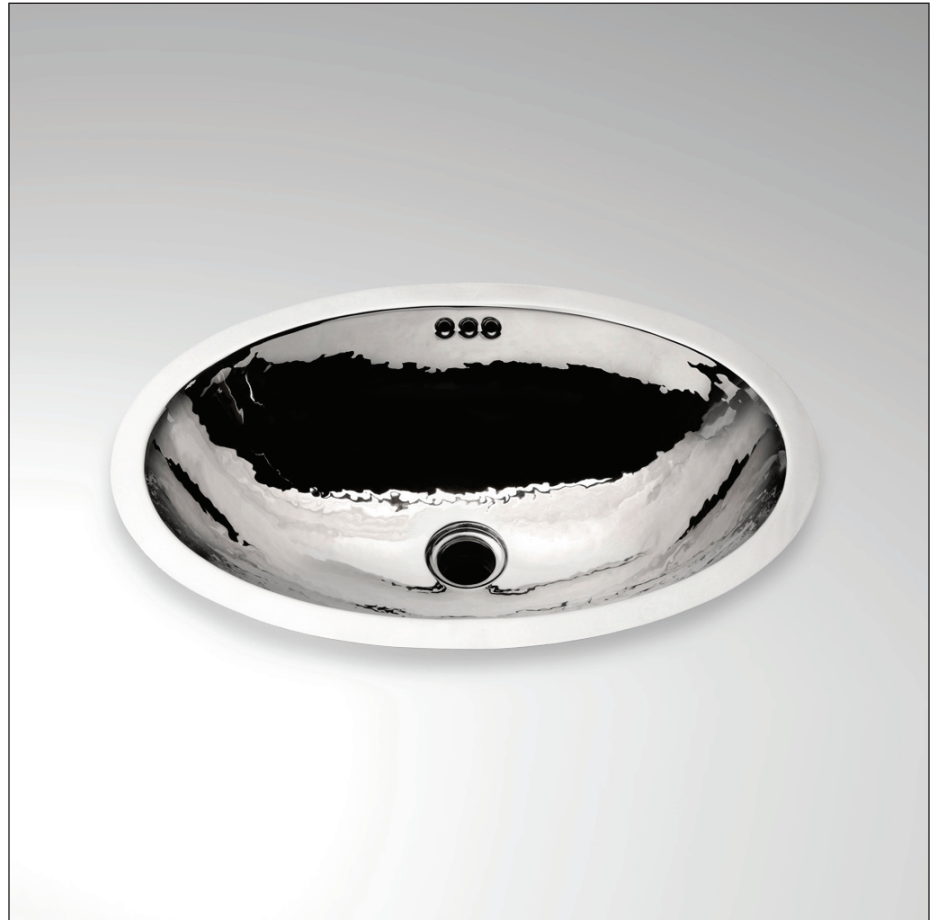
Our exclusive Normandy sinks, hammered by hand according to old French tradition.

### FEATURES

Handcrafted in France from sheets of copper and formed in individual molds.

The Normandy sinks are finished with a burnishing hammer and polished by hand.

Suitable for master baths and powder rooms.



SHOWN IN finish/color

## WATERWORKS

PRODUCT SUPPORT  
800.927.2120  
WATERWORKS.COM

# NORMANDY

Hammered Copper Oval Overmount /  
Undermount Lavatory 15  $\frac{3}{8}$ " x 10  $\frac{5}{8}$ " x 7" in  
Chrome

**STYLE No.** NOLV35

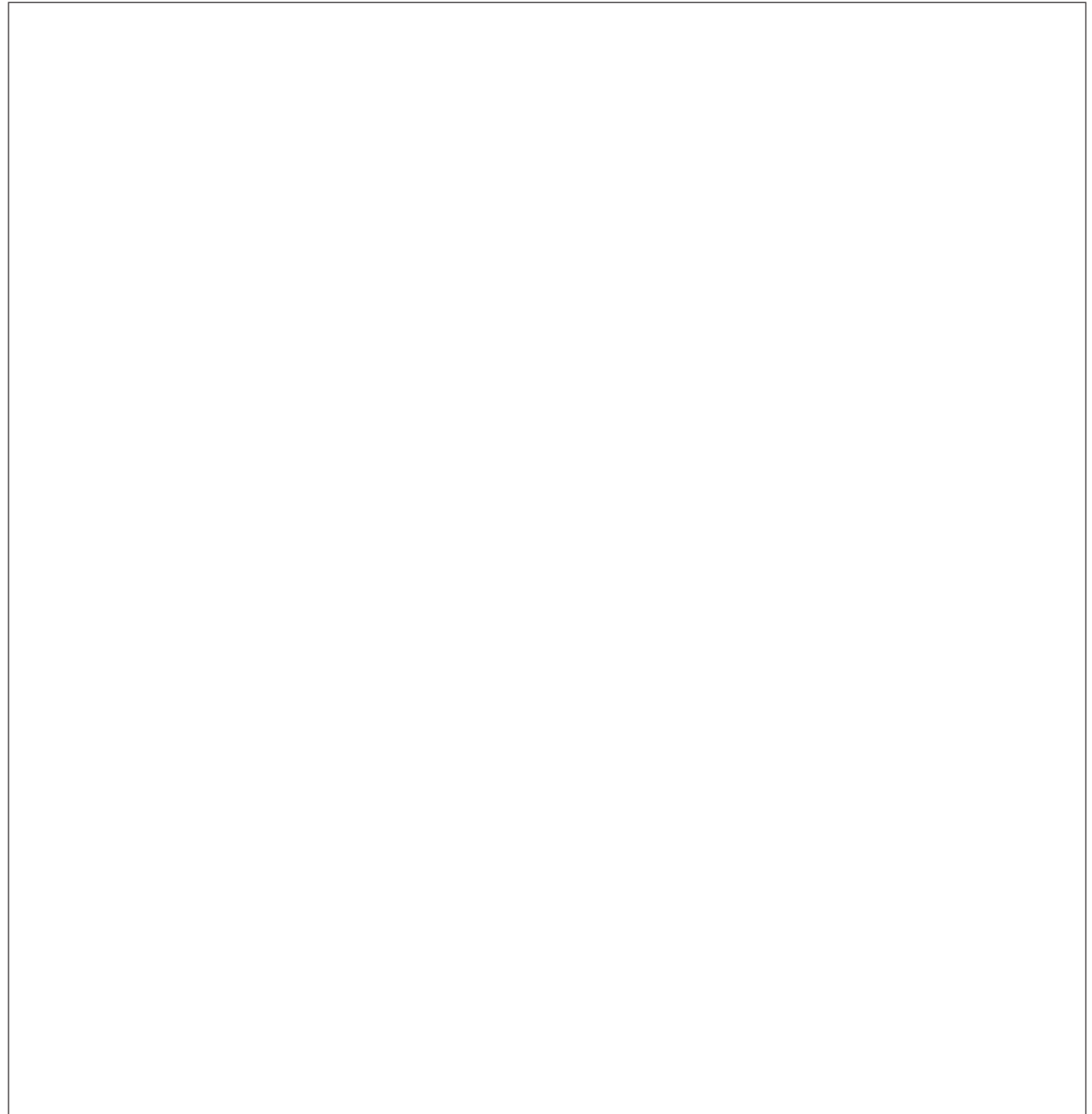
**REFERENCE No.** NOLV35C

**ITEM No.** 11-44273-68597

## SPECIFICATIONS

PAGE 2 OF 3

*All dimensions are based on original specifications and are subject to change and variation. Please consult your Design Associate for current specifications.*



## WATERWORKS

PRODUCT SUPPORT  
800.927.2120  
WATERWORKS.COM

# NORMANDY

Hammered Copper Oval Overmount /  
Undermount Lavatory 15  $\frac{3}{8}$ " x 10  $\frac{5}{8}$ " x 7" in  
Chrome

**STYLE No.** NOLV35

**REFERENCE No.** NOLV35C

**ITEM No.** 11-44273-68597

## SPECIFICATIONS

PAGE 3 OF 3

### SPECIFICATIONS

Primary Material: Hammered Copper  
ADA Compliance:  
Dimension Tolerance:  
Drain Hole Depth:  
Drain Hole Diameter:  
Installation Type: Overmount / Undermount  
Material / Wall Thickness:  
Outer Rim Shape: Oval  
Overflow Opening:  
Stain Resistance:

### CARE INSTRUCTIONS

To clean the finish, wipe gently with a soft damp cloth and then with a soft dry towel. A mild soap solution can be used for daily cleaning.

### CODES AND STANDARDS

### REQUIRED PLUMBING DETAILS

Below is a list of choices that must be made to complete your lavatory sink.