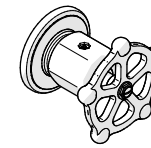


## INSTALLATION GUIDELINES

### IMPORTANT:

- To ensure this product is installed properly, you must read and follow these guidelines.
- The owner/user of this product must keep this information for future reference.
- This product must be installed by a professional licensed contractor and must be onsite prior to rough-in, this allows the installer to visualize the installation.
- Be sure your installation conforms to federal state, and local codes. In the State of Massachusetts, all installations must comply with the rules and regulations set forth within 248 CMR.
- Wall valves control on/off/volume and must be installed for each fitting that will have water flowing to it. If using a wall valve with the Universal 3/4" Thermostatic Valve (Style No. GUTH37R) refer to the Installation Guidelines for the Thermostatic Valve which contains related installation information. All valves and trims sold separately.
- Inspect this product to ensure you have all the parts required for proper installation. Product is sold partially assembled but shown fully disassembled for illustrative and service purposed only.
- Use only a strap wrench or protected/smooth-jaw wrench on any finished surface.
- The use of certain plumber's putty may stain stone or tile surfaces.
- If further assistance is required, please contact Product Support at 1-800-927-2120 Monday through Friday, 8am - 6pm EST.
- Refer to the separate Service Parts Documents for available replacement parts.



STYLE No. RGVC01

Regulator Volume Control  
Valve Trim with Wheel  
Handle

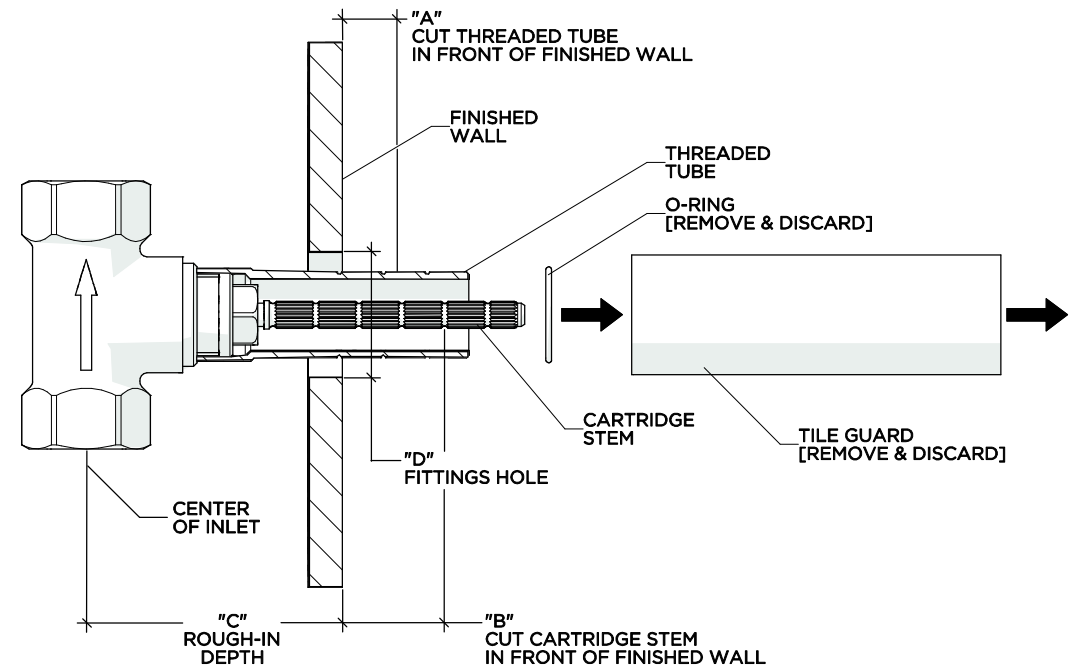
### REQUIRED PLUMBING DETAILS:

- Universal 3/4" Volume Control Valve  
STYLE No. **GUV16** (Counter-Clockwise Open) or **GUV17** (Clockwise Open)

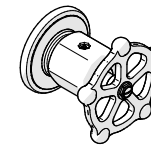
### ROUGH-IN AND VALVE PREPARATION:

- **CAUTION:** Mark and remove the **THREADED TUBE** before cutting. Do NOT cut the end with the internal threads.
- **CAUTION:** Mark and remove the **CARTRIDGE** using a 21/32" [17mm] shower valve socket wrench before cutting.

DIMENSION	VALUE
A	1" [25mm]
B	1-11/16" [43mm]
C	2-1/2" MIN [64mm] - 3-1/8" MAX [79mm]
D	Ø1-3/8" [35mm]

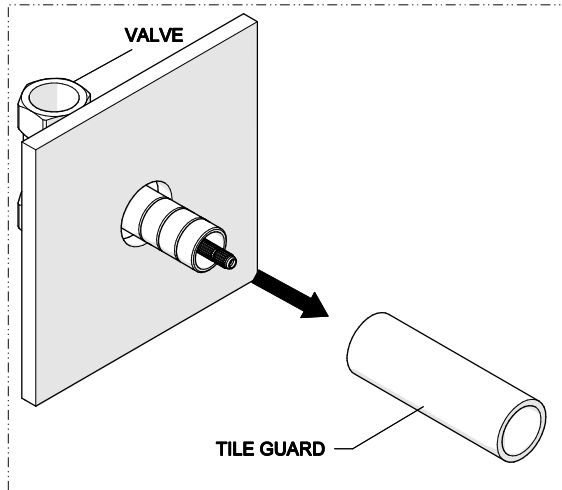


## INSTALLATION GUIDELINES

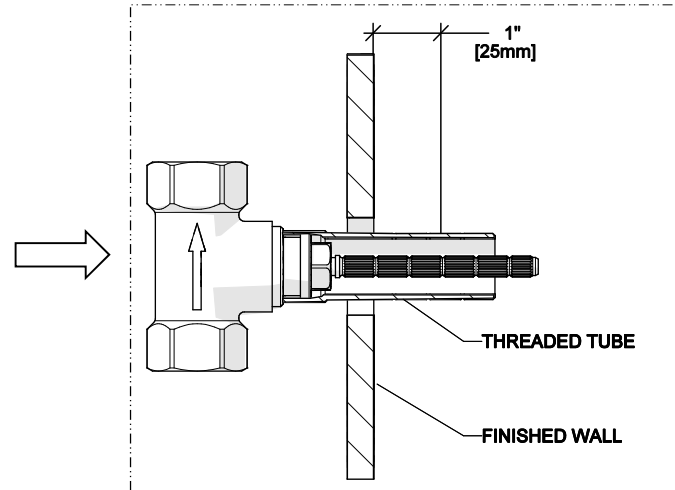


STYLE No. RGVC01

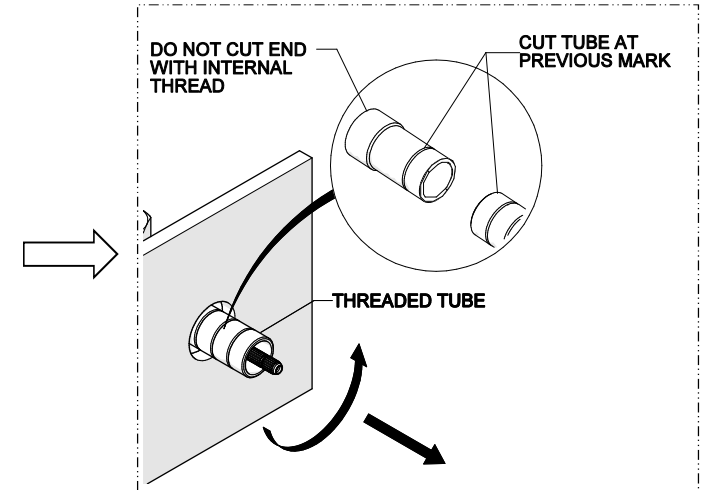
Regulator Volume Control  
Valve Trim with Wheel  
Handle



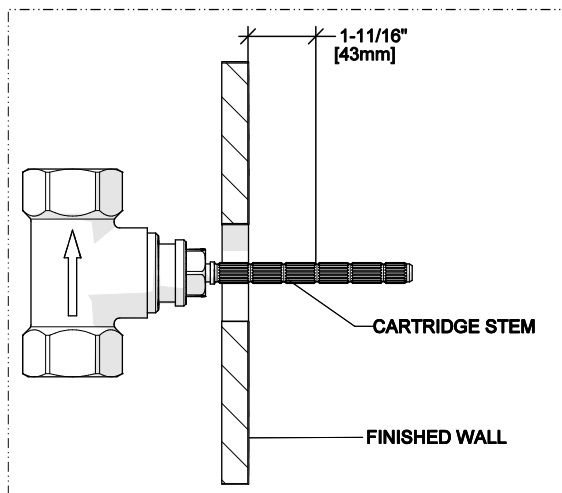
1. Remove the TILE GUARD and O-RING from the VALVE.



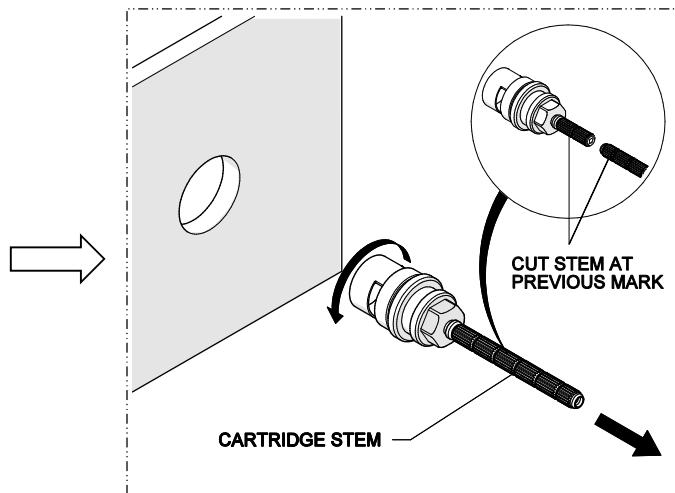
2. Mark the THREADED TUBE 1" [25mm] beyond where it protrudes from the finished wall.



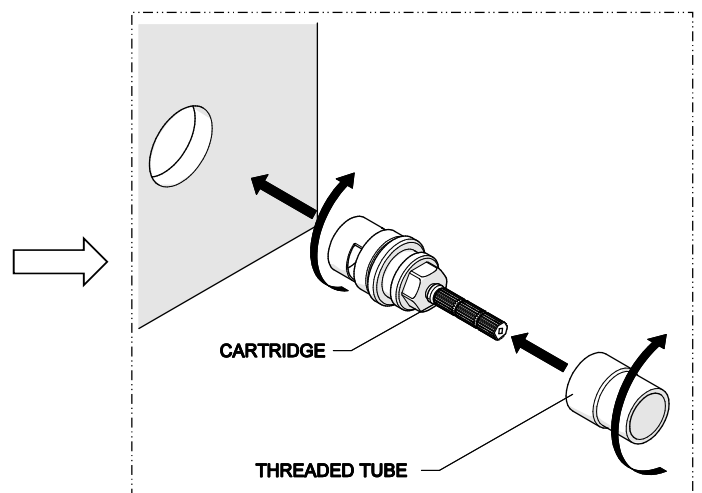
3. Unthread the THREADED TUBE then cut the TUBE at the previous mark. Keep the end with internal thread.



4. Mark the CARTRIDGE STEM 1-11/16" [43mm] beyond where it protrudes from the finished wall.

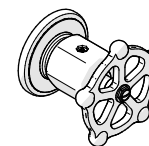


5. Remove the CARTRIDGE using a 21/32" [17mm] shower valve socket wrench (not provided) then cut the STEM at the previous mark.



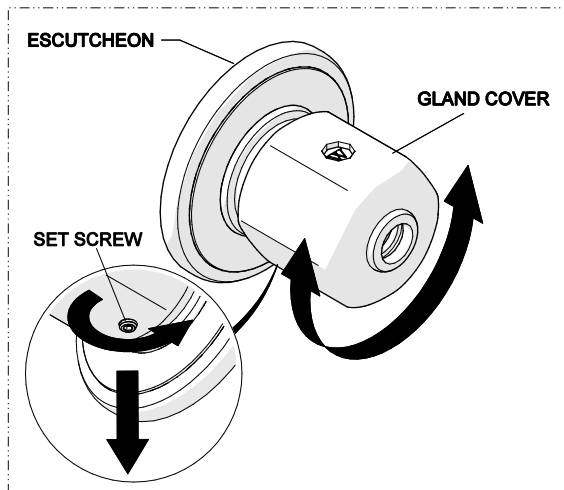
6. Thread and securely tighten the CARTRIDGE back into the VALVE then thread the THREADED TUBE back onto the CARTRIDGE.

## INSTALLATION GUIDELINES

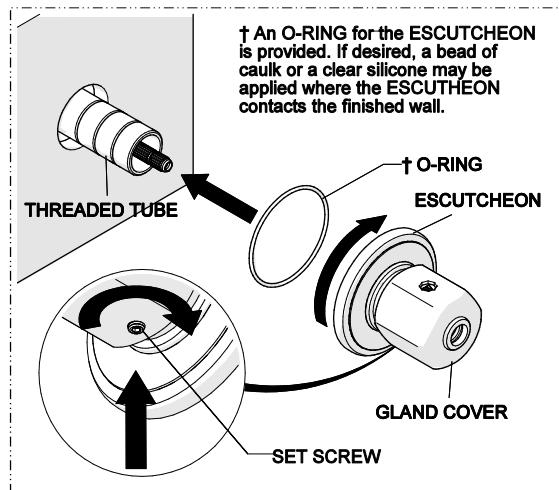


STYLE No. RGVC01

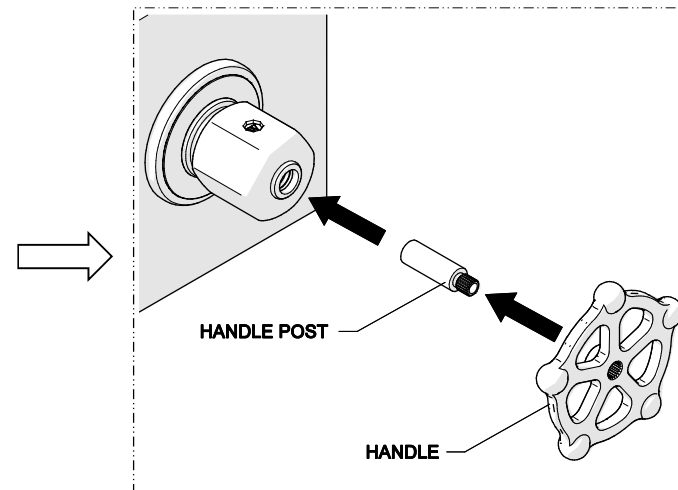
Regulator Volume Control  
Valve Trim with Wheel  
Handle



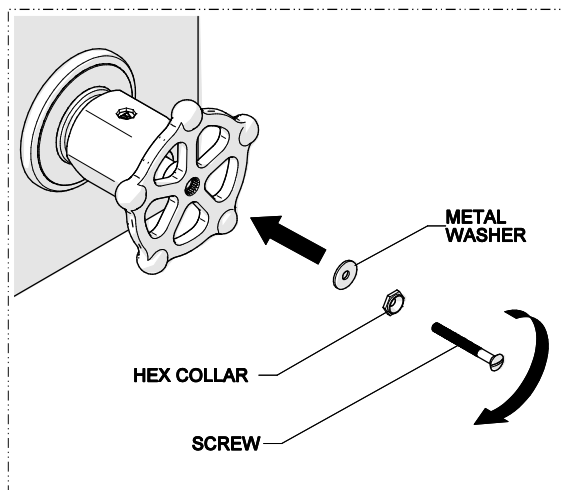
7. Unthread, but do not fully remove the SET SCREW to allow free rotation of the GLAND COVER over the ESCUTCHEON.



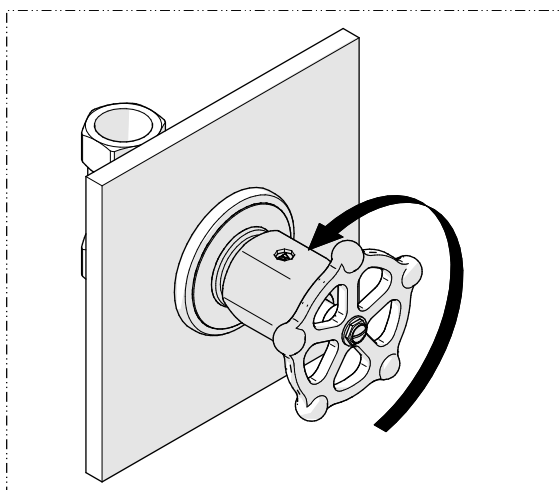
8. Thread and securely tighten the ESCUTCHEON onto the THREADED TUBE, then securely tighten the SET SCREW, being sure the GLAND COVER is set to the orientation shown.



9. Place the HANDLE POST onto the CARTRIDGE STEM then place the HANDLE onto the POST in the desired orientation.



10. Thread and securely tighten the SCREW, being sure to include the METAL WASHER and the HEX COLLAR.



11. Turn on the water supply and operate the HANDLE to ensure that it is functioning properly.