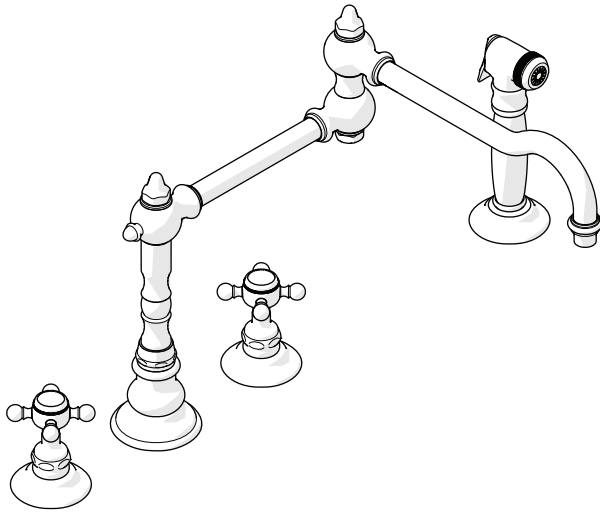
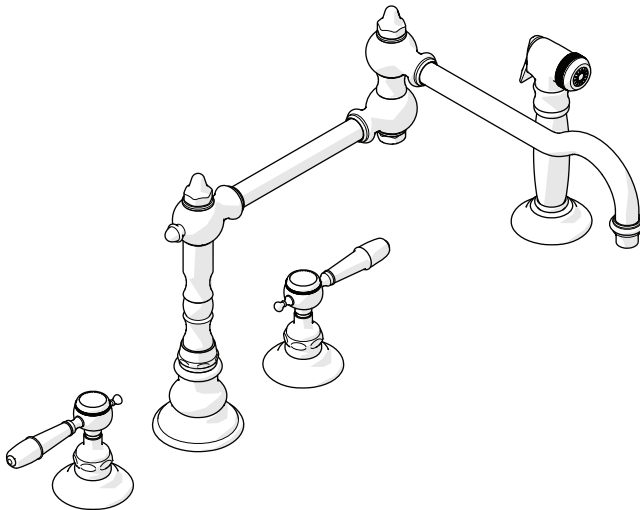


STYLE No. JUKM48
Cross Handles



STYLE No. JUKM49
Lever Handles



SPECIFICATIONS:

Deck Thickness Maximum: 1-1/2" (38mm)
 Fittings Hole Diameter: 1-1/4" (32mm)
 Handle Spread: 8" (203mm) - 12" (305mm)
 Handle Turn Angle: Quarter Turn
 Inlet Connection Size & Type: 1/2" Male with Supply Nut
 Inlet Supply Spread: 8" (203mm) - 12" (305mm)
 Integrated Diverter: Y
 Restricted Maximum Flow Rate: 2.2gpm (8.3liters/min)
 Spout Reach: 18-3/8" (467mm)
 Spout Swivel: Yes
 Spray Hose Length: 49" (1245mm)
 Water Pressure Minimum: 20 psi (1.4 Bar)
 Water Pressure Maximum: 80 psi (5.5 Bar)
 Water Pressure Recommended: 45 psi (3 Bar)

IMPORTANT:

- To ensure this product is installed properly, you must read and follow these guidelines.
- This product must be installed by a professional licensed contractor.
- The owner/user of this product must keep this information for future reference.
- Be sure your installation conforms to all federal, state, and local codes.
- In the State of Massachusetts, all installations must comply with the rules and regulations set forth within 248 CMR.
- Inspect the product to ensure you have all the parts required for proper installation. Use only a strap wrench or protected/smooth-jaw wrench on any finished surface.
- DO NOT use putty. Putty contains oil and can cause permanent discoloration on certain materials such as marble, granite and any porous surface.
- Refer to the specification and assembly drawings attached. Product is sold partially assembled but shown fully disassembled for illustrative and service purposes only.

SPOUT INSTALLATION:

1. Remove the DIVERTER TEE, FIBER WASHER, MOUNTING NUT, METAL WASHER and RUBBER WASHER from the SPOUT. Do **NOT** remove the RUBBER WASHER beneath the ESCUTCHEON. See FIGURE -01.

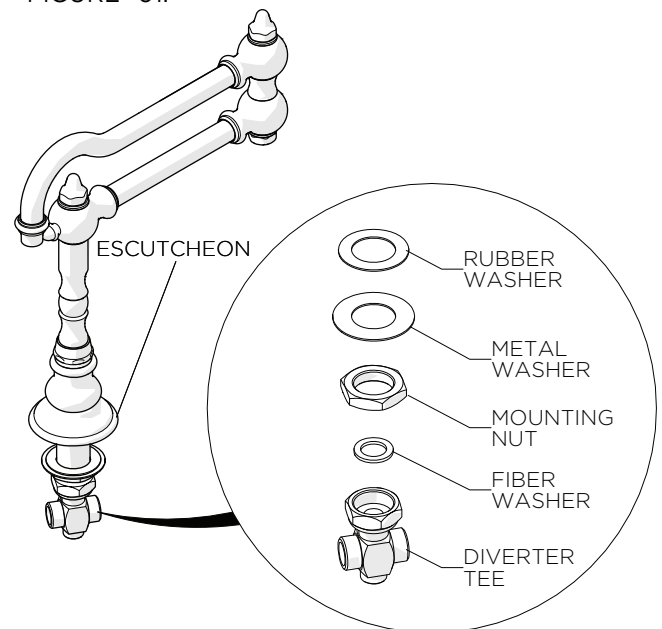


FIGURE - 01

These guidelines have been prepared for the professional contractor to aid in the installation of:
JULIA THREE HOLE ARTICULATED KITCHEN FAUCET WITH METAL CROSS HANDLES AND SPRAY (STYLE No. JUKM48),
JULIA THREE HOLE ARTICULATED KITCHEN FAUCET WITH METAL LEVER HANDLE AND SPRAY (STYLE No. JUKM49).
 All dimensions are based on original specification and are subject to change and variation.
 Please consult your Design Associate for current specifications.

2. Insert the SPOUT SHANK through the hole on the mounting surface. Make sure the RUBBER WASHER is beneath the ESCUTCHEON.
3. Re-install the RUBBER WASHER, METAL WASHER and MOUNTING NUT onto the SPOUT SHANK. Securely tighten the MOUNTING NUT to secure the SPOUT to the mounting surface.
4. Re-install the DIVERTER TEE making sure to use the FIBER WASHER.

VALVE INSTALLATION:

➤ Refer to FIGURE - 02 for Steps 5 through 12.

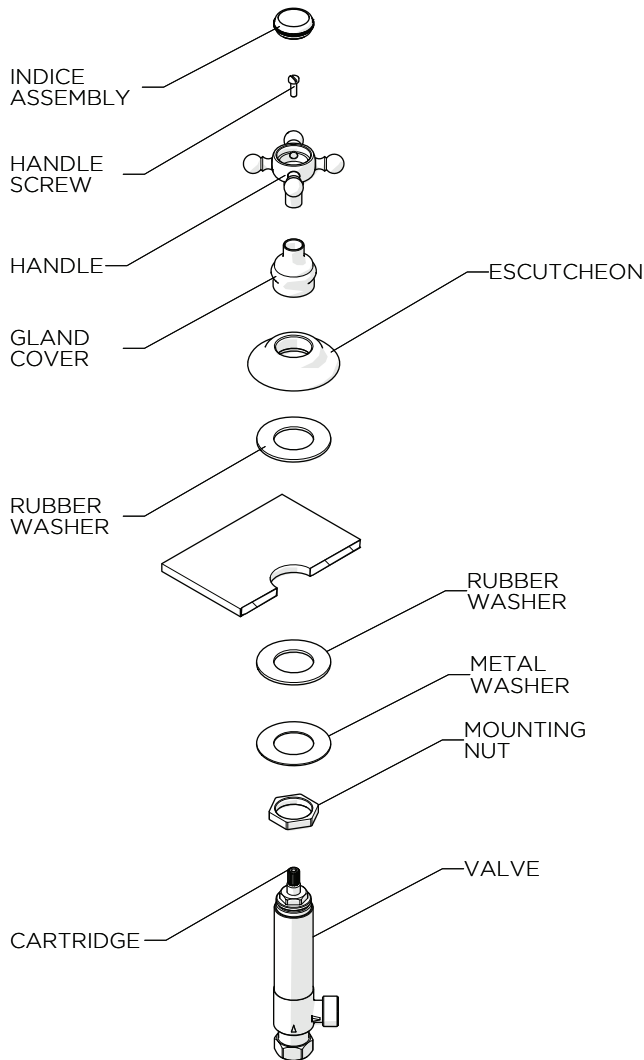


FIGURE - 02

5. Pull off the INDICE ASSEMBLY and unthread the HANDLE SCREW then pull off the HANDLE.
6. Unthread the GLAND COVER, unthread the ESCUTCHEON and remove the RUBBER WASHER beneath the ESCUTCHEON.

7. Insert the VALVE through the hole on the mounting surface from underneath. Make sure the RUBBER WASHER, METAL WASHER and MOUNTING NUT are installed on the VALVE.
8. Thread the ESCUTCHEON back onto the VALVE making sure the RUBBER WASHER is beneath the ESCUTCHEON. Thread the ESCUTCHEON far enough down the VALVE to have a few threads from the VALVE exposed above the ESCUTCHEON.
9. Thread the GLAND COVER back onto the CARTRIDGE until it stops, then unthread the ESCUTCHEON until it contacts the GLAND COVER.
10. Unthread the MOUNTING NUT and securely tighten to secure the VALVE to the mounting surface.
11. Place the HANDLE back onto the CARTRIDGE and align accordingly then thread the HANDLE SCREW back into the CARTRIDGE. Securely tighten the HANDLE SCREW then insert the INDICE ASSEMBLY back into the HANDLE.
12. Repeat steps 5 through 11 to install the second VALVE.

SPRAY INSTALLATION:

➤ Refer to FIGURE - 03 for Steps 13 through 15.

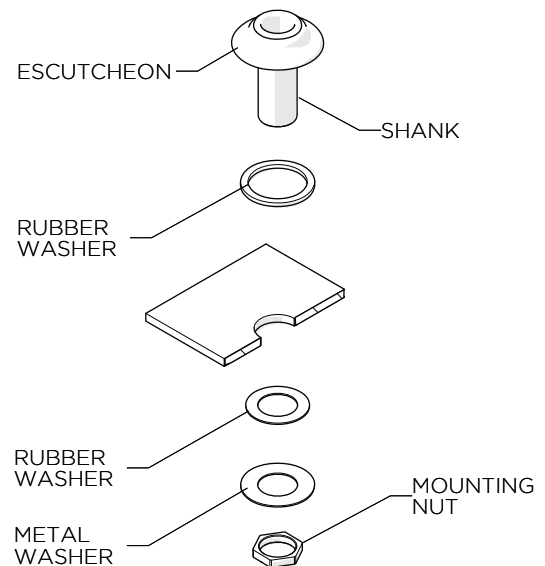


FIGURE - 03

13. Remove the MOUNTING NUT, METAL WASHER and RUBBER WASHER from the SHANK. Do **NOT** remove the RUBBER WASHER beneath the ESCUTCHEON.
14. Insert the SHANK through the hole on the mounting surface then re-install the RUBBER WASHER, METAL WASHER AND MOUNTING NUT. Make sure the RUBBER WASHER is beneath the ESCUTCHEON.
15. Securely tighten the MOUNTING NUT.

These guidelines have been prepared for the professional contractor to aid in the installation of:
JULIA THREE HOLE ARTICULATED KITCHEN FAUCET WITH METAL CROSS HANDLES AND SPRAY (STYLE No. JUKM48),
JULIA THREE HOLE ARTICULATED KITCHEN FAUCET WITH METAL LEVER HANDLE AND SPRAY (STYLE No. JUKM49).
 All dimensions are based on original specification and are subject to change and variation.
 Please consult your Design Associate for current specifications.

WATERWORKS

16. Connect the conical end of the HOSE to the SPRAY then insert the other end of the HOSE through the SHANK. Place the SPRAY into the SHANK.
17. Connect the HOSE to the DIVERTER TEE using the GASKETS provided.

FINISH AND INSPECT INSTALLATION:

18. Connect the VALVES to the DIVERTER TEE using the HOSES provided.
19. Connect the VALVES to the water supplies using the SUPPLY NUTS provided.
20. Unthread the AERATOR HOUSING and remove the AERATOR from the SPOUT, then open the inlet supplies and carefully turn both HANDLES to flush out any debris in the supply lines. Do **NOT** operate the SPRAY before flushing out the lines.
21. Operate the SPRAY to make sure that water is being properly diverted.
22. Inspect all connections for leaks then re-install the AERATOR, making sure to include the O-RING.

SERVICING THE SHUT-OFF CARTRIDGE(S):

- Refer to FIGURE - 04 for Steps 1 through 2.

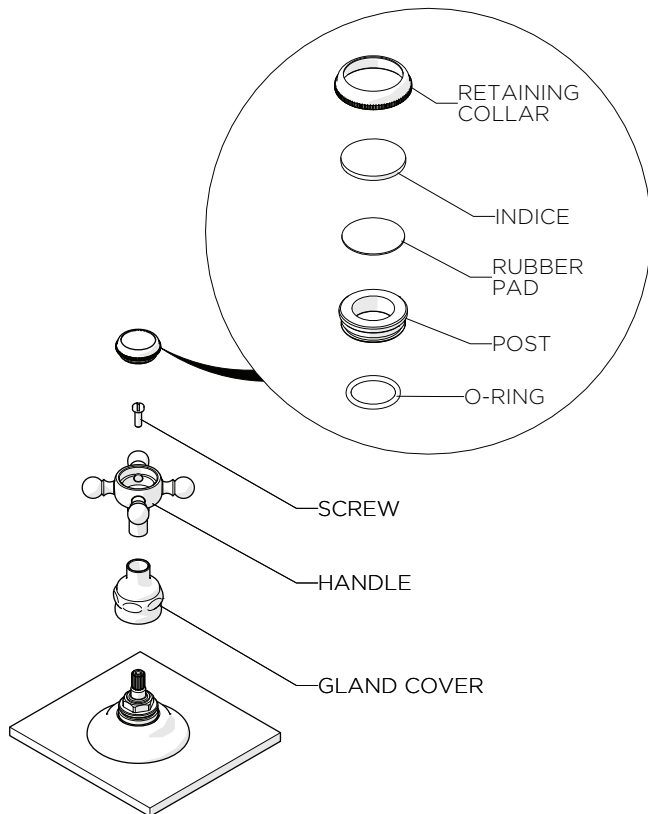


FIGURE - 04

1. Pull off the INDICE ASSEMBLY to expose the HANDLE SCREW. The INDICE ASSEMBLY will come off as one piece. It is held in place by an O-RING.
 2. Unthread the HANDLE SCREW, pull off the HANDLE and unthread the GLAND COVER to expose the cartridge.
- If further assistance is required, please contact Product Support at 1-800-927-2120 Ext 2 Monday through Friday, 8am - 6pm EST.
 - * Putty contains oil and can cause permanent discoloration on certain materials such as marble, granite and any porous surface.

These guidelines have been prepared for the professional contractor to aid in the installation of:
JULIA THREE HOLE ARTICULATED KITCHEN FAUCET WITH METAL CROSS HANDLES AND SPRAY (STYLE No. JUKM48), JULIA THREE HOLE ARTICULATED KITCHEN FAUCET WITH METAL LEVER HANDLE AND SPRAY (STYLE No. JUKM49).
All dimensions are based on original specification and are subject to change and variation.
Please consult your Design Associate for current specifications.

W A T E R W O R K S