**IMPORTANT:**

- To ensure this product is installed properly, you must read and follow these guidelines.
- The owner/user of the faucet must keep this information for future reference.
- Be sure your installation conforms to local codes.
- Refer to the specification and assembly drawings attached. Faucet is sold partially assembled but shown fully disassembled for illustrative and service purposes only.
- Inspect this product to assure you have all parts required for proper installation.
- Use only a strap wrench or protected/smooth-jaw wrench on any finished surface.
- If possible, install the faucet assembly on the sink or mounting surface before setting.
- Do NOT use putty during this installation.

SIDE VALVE INSTALLATION:

1. Disassemble the index assembly (1-5) as 1 unit from the handle hub (8) by lifting the ring (1) off of the handle.
2. Insert a bladed screw driver into the handle and loosen the screw (6) then pull the handle off the cartridge (11).
3. Unthread the cover (9) from the cartridge then base escutcheon (10) from the side valve (15). Remove 1 sealing gasket (12) as an upper seal. Do NOT remove the other sealing gasket or hardware (12-14).
4. Insert the side valve into the hole in the mounting surface so at least 1" of threads are exposed.
5. Install the upper sealing gasket onto the side valve then

thread the base escutcheon (10) onto the side valve until it contacts the mounting surface.

6. Thread the cover (11) onto the cartridge hand tight at which point it will stop.
7. Unthread the base escutcheon until it contacts the cover which will assure proper side valve height.
8. Tighten the nut (14) up against the underside of the mounting surface to secure the side valve.
9. Reinstall the handle and index assembly.
10. Repeat these steps to install the second side valve.

SPOUT INSTALLATION:

11. Remove the tee assembly (30-32) and spout attachment hardware (29a[x1] - 29c) from the spout shank (29).
12. Insert the spout assembly (19-29a[x1], 33, 34) through the spout hole of the mounting surface.
13. Place 1 rubber spout gasket (29a) then spout washer (29b) and nut (29c) onto the spout shank.
14. Tighten the nut to secure the spout to the mounting surface.
15. Reinstall the tee assembly then connect each of the supply hoses to the adjacent side valve making sure they are not pinched/kinked.
16. Connect the side valves (15) to the water supply valves (not supplied).

INSPECT THE INSTALLATION:

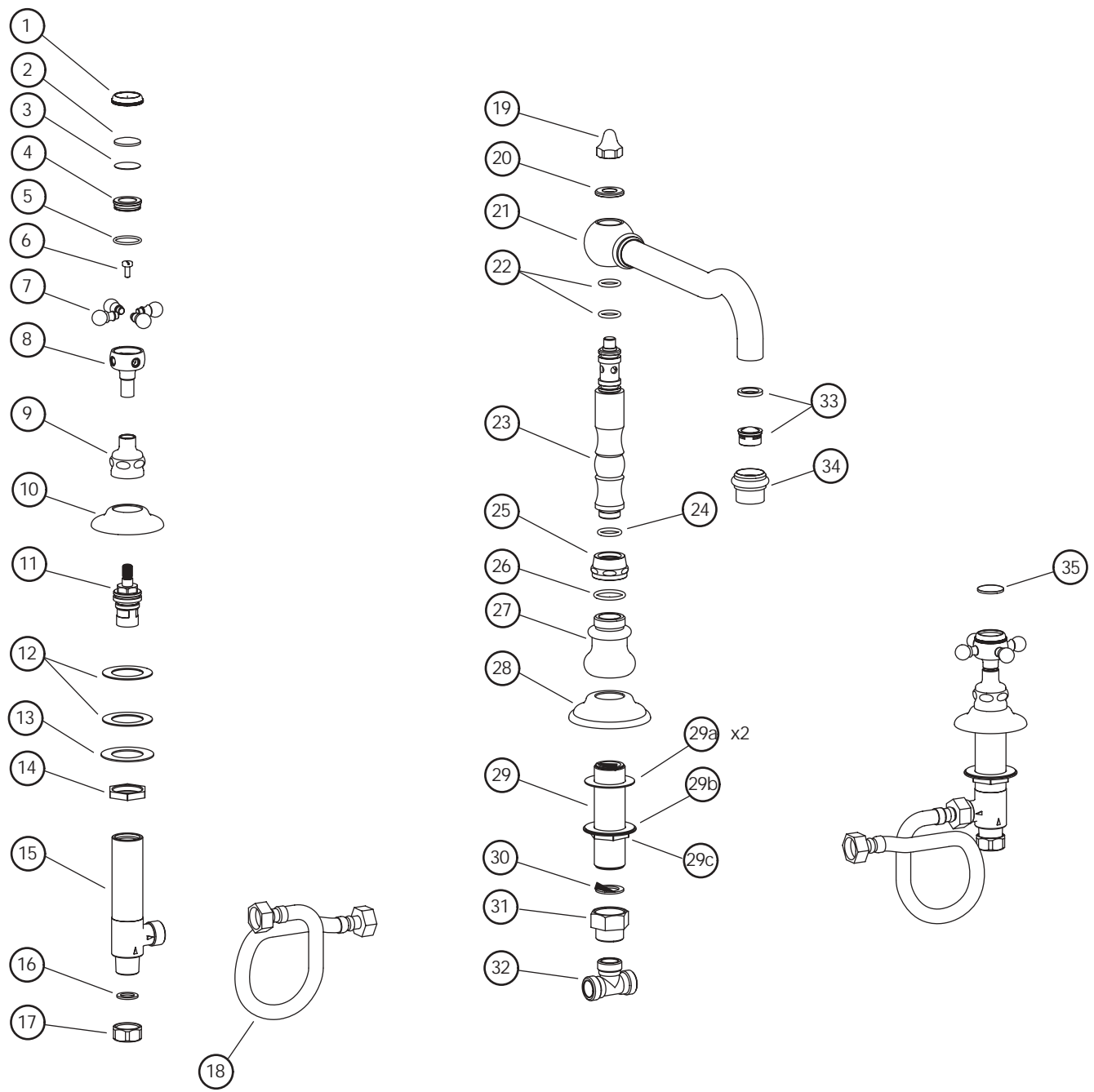
17. Unscrew and remove the aerator assembly (33-34) which includes a flow restrictor.
 18. Carefully open the hot and cold valves to flush out any debris in the supply lines.
 19. Inspect all connections for leaks.
 20. Close the valves and reinstall the aerator assembly.
- If further assistance is required, please contact Product Support at 1-800-927-2120 (8am-7pm EST)

These guidelines have been prepared for the professional contractor to aid in the installation of:
JULIA KITCHEN MIXER (JUKM17)

6/05

All dimensions are based on original specifications and are subject to change and variation. Please consult your Design Associate for current specifications.

W A T E R W O R K S®



(11) : Part # wwpls11 (x2)