

BELDEN

BEVN02

Belden Single Vanity Packaged with Sink and Slab Top 38" x 24 1/2" x 31 1/2"



SHOWN IN BELDEN SINGLE VANITY PACKAGED WITH SINK AND SLAB TOP 38" X 24 1/2" X 31 1/2" BEVN02

TECHNICAL DETAILS

Bowl Shape: Oval
 Drain Hole Depth: 1.72"
 Drain Hole Diameter: 1.8"
 Depth / Width: 24 1/2"
 Height: 32 3/4"
 Length: 38"
 Number of Holes: Two Hole
 Outer Rim Shape: Oval
 Overflow Opening: Yes
 Rough-in Supply Height Recommended: 21"
 Rough-in Waste Height Recommended: 19"
 Sink Visibility: N
 Storage Type: Cabinet
 Suggested Application: Bath

INSPIRATION

The Belden range of cabinets is classical with a twist; the simple cove molding combined with a wide, flat band references both American Federal detailing and 20th century French neoclassicism. Pairs well with many hardware styles and is available in endless customizable options. U.S. custom fabricated by skilled cabinetmakers and available in 23 exclusive paint colors and a variety of oak and walnut wood finishes.

PRODUCT FEATURES

Continues the tradition of classic American-made cabinetry
 Pairs well with many hardware styles from traditional to contemporary
 Includes SALV26 sink and choice of stocked stone tops in Bardiglio or Carrara.



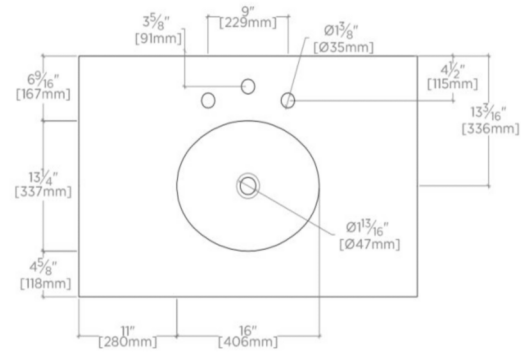
PRODUCT (NOTES)

Slab and sink top are included

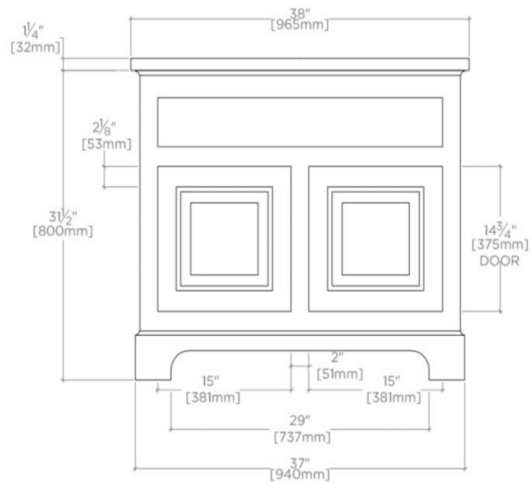
BELDEN

BEVN02

Belden Single Vanity Packaged with Sink and Slab Top 38" x 24 1/2"
x 31 1/2"



TOP VIEW SCALE: 3/4"=1'-0"



FRONT VIEW SCALE: 3/4"=1'-0"



SIDE VIEW SCALE: 3/4"=1'-0"