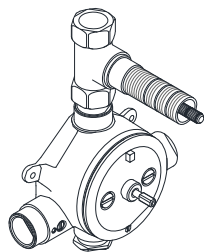


Style No. GUTH46†
Code No. GUSV46R



SPECIFICATIONS:

Fitting Hole Diameter	Ø5-1/4" (Ø 133mm)*
Inlet/Outlet Connection Size & Type:	3/4" Female NPT†
Recommended Water Pressure:	45 psi (3 Bar)
Rough-in Depth	2-1/2" MIN - 2-3/4" MAX (64mm MIN - 70mm MAX)
Shut-off Valve Material:	Ceramic
Unrestricted Maximum Flow Rate:	14.7gpm @ 45 psi (56 L/min @ 3 Bar)
Thermostatic Valve Material:	Bi-Metallic Strip
Water Pressure:	20 psi MIN - 80psi MAX (1.4 Bar Min - 5.5 Bar Max)

* Ø5-1/4" (Ø 133mm) hole is required for servicing.

† UK Style No. **GU46TH** supplied with 4 **BSP** Adapters, assembly required.

IMPORTANT:

- To ensure this product is installed properly, you must read and follow these guidelines.
- The owner/user of this product must keep this information for future reference.
- This valve includes integrated service stops. Make sure the tile guards are in place.
- This valve features anti-scald protection. The risk of scalding exists until the installer had properly calibrated/adjusted the temperature setting during final trim installation.
- This product must be installed by a professional licensed contractor.
- Be sure your installation conforms to all federal, state, and local codes.
- In the State of Massachusetts, all installations must comply with the rules and regulations set forth within 248 CMR.
- Refer to the specification and assembly drawings attached. Product is sold partially assembled but shown fully disassembled for illustrative and service purposes only.
- Inspect this product to ensure you have all parts required for proper installation.

ROUGH-IN:

- **IMPORTANT:** Valve rough-in depth is measured from the centerline of the inlets to the surface of the finished wall. This valve is intended for use with the Boulevard Thermostatic with Shut-off Trim only (sold separately).
 - Rough in Depth Minimum: 2 1/2" (64mm)
 - Rough in Depth Maximum: 2 3/4" (70mm)
1. Make sure the valve body is positioned according to valve markings so the inlets are situated with hot piped on the left and cold piped on the right. Positioned correctly, notice that the inlets are below an imaginary horizontal line drawn between the 2 cover screws (2).
 2. Run 3/4" hot and cold copper supply lines to the proper height of the valve inlets and be sure to secure all piping and fittings.
 3. The thermostatic portion of this valve only mixes hot and cold water. The integrated wall valve controls on/off/volume for 1 fitting that will have water running to it.
 4. The bottom port of the valve is plugged, but can be used to supply water to other fittings. For additional fittings that will have water flowing to them, install a wall valve or diverter valve (both sold separately) at the same rough-in depth and according to the flow direction arrow marked on the wall valve or diverter valve body.
 5. **IMPORTANT:** The opening in the finished wall surface is larger than the tile guard (1) provided with the valve. Verify trim dimensions to determine ideal opening in the finished wall.

FLUSH OUT THE SYSTEM:

- The supply line must be flushed out to prevent clogging of the filter screens. Failure to flush the lines will permanently damage the cartridge and void the warranty.
6. The valve body is shipped with the flush plate (4,6) installed and is ready for flushing the lines.
 7. Turn on the water supply to flush out the lines then inspect all connections for leaks.
 8. After the lines are flushed, turn off the water supply and remove the flush plate.
 9. Install the cartridge (5) using the 2 cover screws (2-3) and turn off the service stops.
 10. Install the tile guards (1 & 14).
- See service part document for parts ordering, available on WATERWORKS.COM.

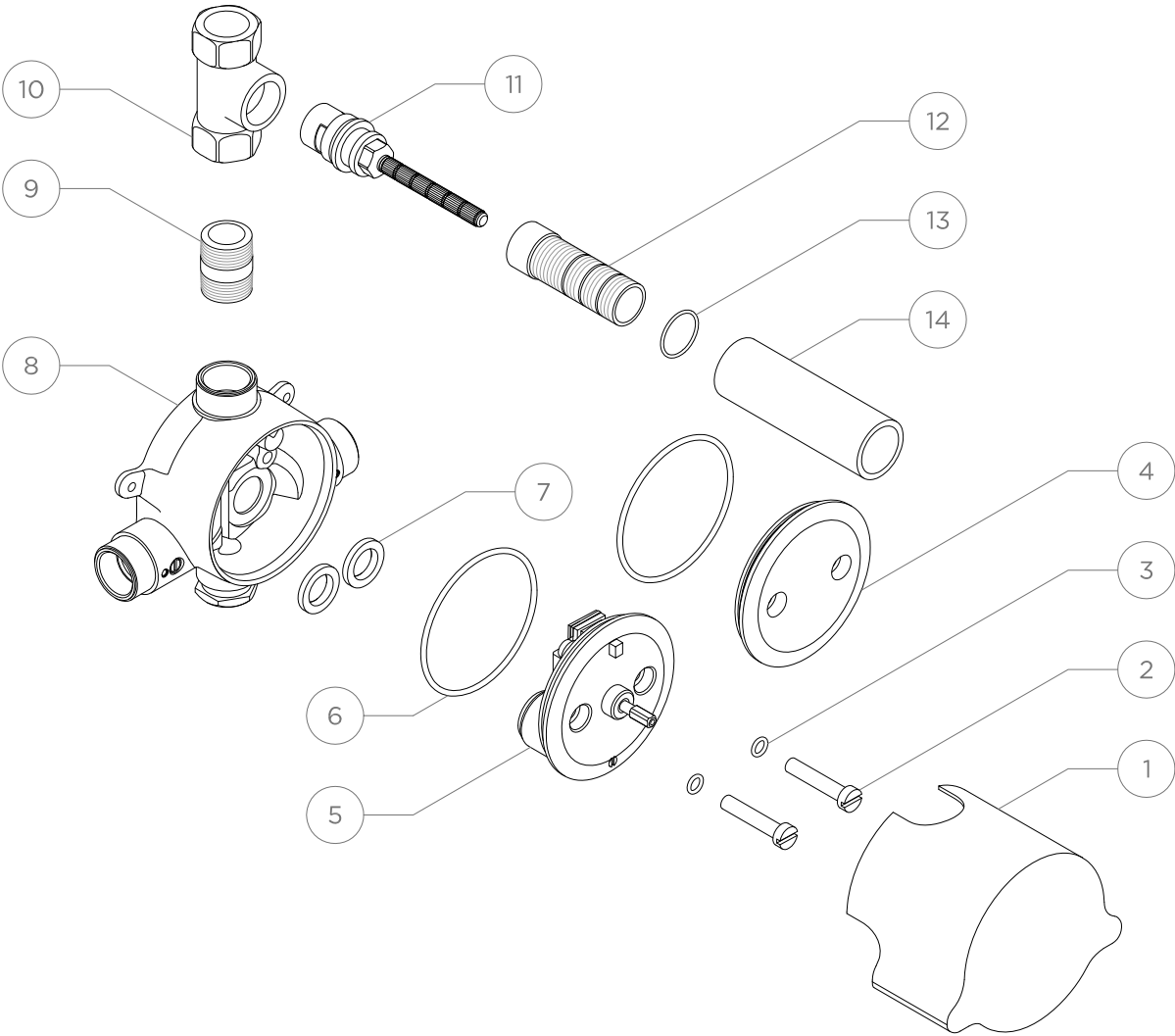
† BSP Adapter can be ordered separately:

(4x) **STYLE No.** UNUK01
ITEM No. 45-22566-33137

These guidelines have been prepared for the professional contractor to aid in the installation of:
UNIVERSAL THREE WAY DIVERTER VALVE FOR PRESSURE BALANCE SHOWER SYSTEMS
(STYLE No. GUSV46R).
All dimensions are based on original specification and are subject to change and variation.
Please consult your Design Associate for current specifications.

W A T E R W O R K S

ITEM NO.	DESCRIPTION	QTY.
1	Tile Guard	1
2	Cover Screws	2
3	O-Ring, 7mm ID x 2mm Width, Rubber	2
4	Flush Plate	1
5	Catridge, Thermostatic	1
6	O-Ring, 74mm ID x 6mm Width, Rubber	2
7	Filter Screen	2
8	Valve Body, Thermostatic	1
9	Nipple	1
10	Valve Body, Shut-off	1
11	Cartridge, Shut-off Valve, CW Close	1
12	Threaded Tube	1
13	O-Ring, 25mm ID x 1mm Width, Rubber	1
14	Tile Guard	1



These guidelines have been prepared for the professional contractor to aid in the installation of:
UNIVERSAL THREE WAY DIVERTER VALVE FOR PRESSURE BALANCE SHOWER SYSTEMS
(STYLE No. GUSV46R).
All dimensions are based on original specification and are subject to change and variation.
Please consult your Design Associate for current specifications.

WATERWORKS